

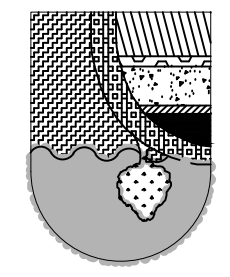
PLANS PREPARED UNDER THE  
DIRECTION OF:  
MICHAEL R. LIGHT  
P.E.  
70690

REVIEWS:

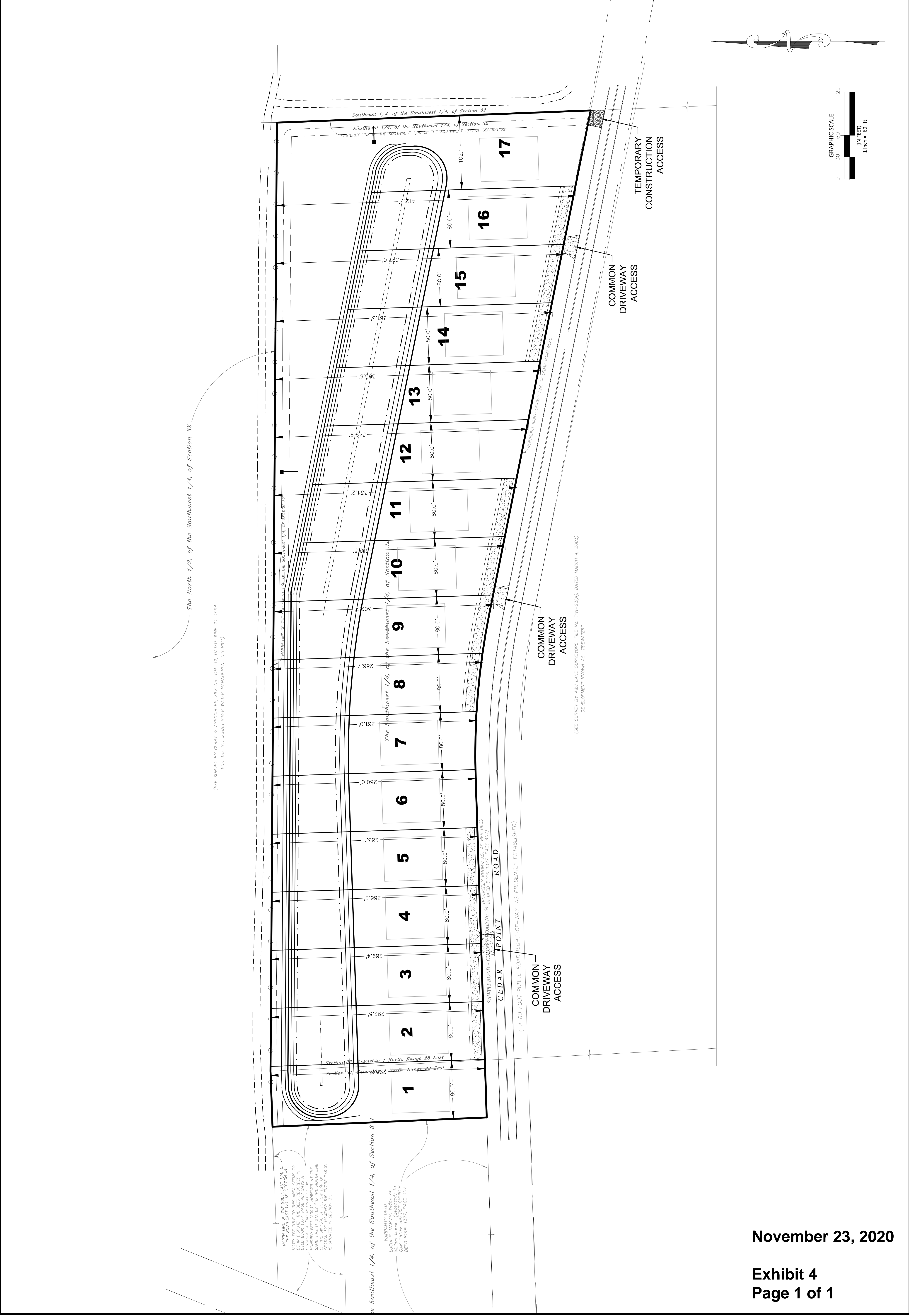
DATE: 07-15-2020  
CHECKED BY: MRL  
DESIGNED BY: MRL  
DRAWN BY: MRL  
DATE NO. 20-2001-00

**PRELIMINARY  
SITE PLAN  
RAWLS RANCH  
DUVAL COUNTY,  
FLORIDA**

Access Environmental & Engineering, Inc.  
425 Crescent Pond Drive  
Saint Johns, FL 32259  
(904) 731-LAND (5263)



**Fig. 1**  
DRAWING NUMBER



November 23, 2020

Exhibit 4  
Page 1 of 1