

COPE'S LANDING

**TABULAR SUMMARY**

VILLAGE CENTER/ COMMERCIAL	12.74 Ac	
VILLAGE CENTER/ COMMUNITY CENTER	3.76 Ac	
VILLAGE CENTER/ PUBLIC FACILITIES	1.50 Ac	
VILLAGE CENTER/ TOTAL	18.00 Ac	
TOTAL UPLAND		320.48 Ac
TOTAL WETLAND/CONSERVATION		156.50 Ac
TOTAL AREA		476.98 Ac
		2.0 UNITS/ACRE
LAKE RETENTION		33.12 Ac
ROAD RIGHT-OF-WAY		40.16 Ac

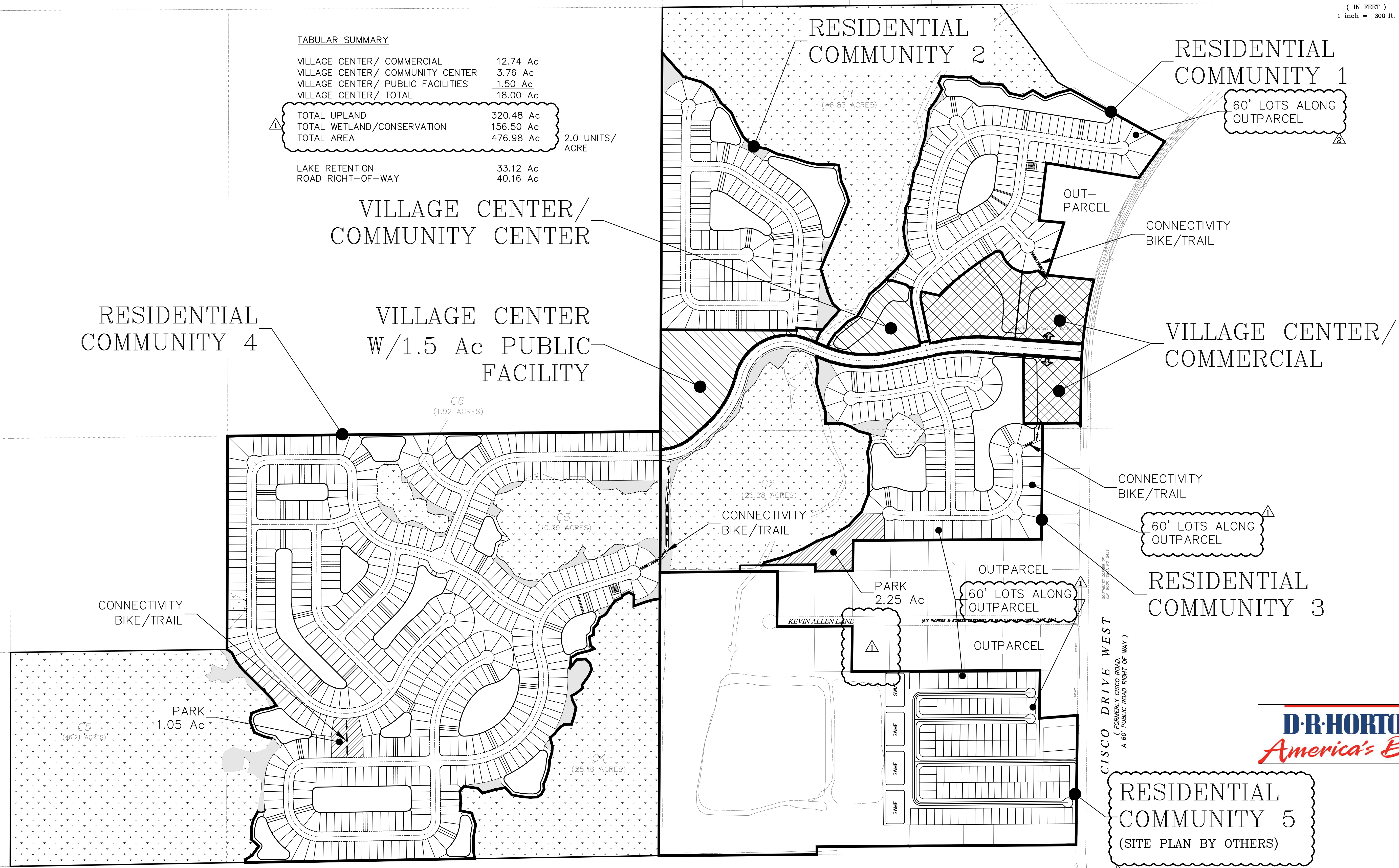


Exhibit 4  
Page 1 of 1



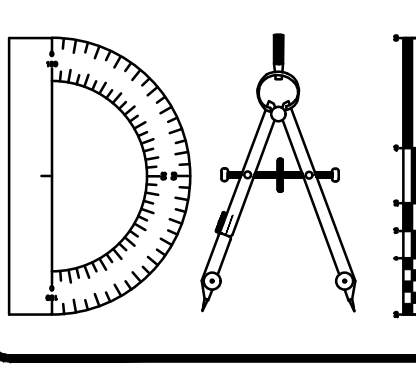
NOTE: THIS PLAN IS CONCEPTUAL IN NATURE. LOT LINES, LOT SIZES, ROADWAY NETWORK, RIGHT-OF-WAYS, STORM WATER PONDS AND SIGNAGE MAY BE ADJUSTED FOR ENGINEERING, GEOMETRY AND ANY GOVERNMENTAL AGENCY REQUIREMENTS AND AS SITE PLANNING REQUIRES.

Always call 811 two full business days before you dig  
**Sunshine811.com**

P:\POTENTIAL PROJECTS\DR HORTON\DOROTHYS LANDING\EXHIBITS\COPE'S LANDING-PUD SITE PLAN.DWG8/26/2020 10:27 AM Mike Reilly

REVISIONS			
NO.	DATE	DESCRIPTION	BY:
1	7-31-20	REMOVE PARCEL 003325-1150 & SHOW 60' WIDE LOTS	VJD
2	8-12-20	SHOW 60' WIDE LOTS	VJD
3	8-26-20	ADDED LAYOUT BY OTHERS IN COMMUNITY 5	VJD

DESIGNED BY: MR  
DRAWN BY: MR  
CHECKED BY: VJD  
SCALE: 1" = 300'  
DATE: August 26, 2020  
PROJ. NO.: 0019-40



**Dunn & Associates, Inc.**  
CIVIL ENGINEERS / LAND PLANNERS  
8647 Baypine Road, Suite 200  
Jacksonville, Florida 32256  
Phone: (904)363-8916 Fax: (904)363-8917  
www.dunneng.com

**COPE'S LANDING**  
FOR:  
**D.R. HORTON, INC. - JACKSONVILLE**  
DUVAL COUNTY, FLORIDA  
PUD SITE PLAN

VINCENT J. DUNN ENGINEER NO. 39452  
DAVID M. TAYLOR ENGINEER NO. 44164  
GLEN R. WIEGER ENGINEER NO. 81419  
CERTIFICATE OF AUTHORIZATION NO. 27168

Sheet No. 1 of 1  
**PUD**  
DWG. NO.