

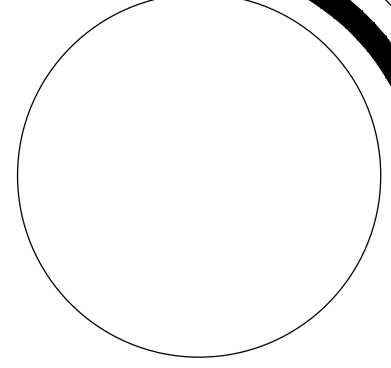
NO.	1	2	3
REVISIONS			
DATE			

THOMPSON MILL RV PARK PUD PLAN

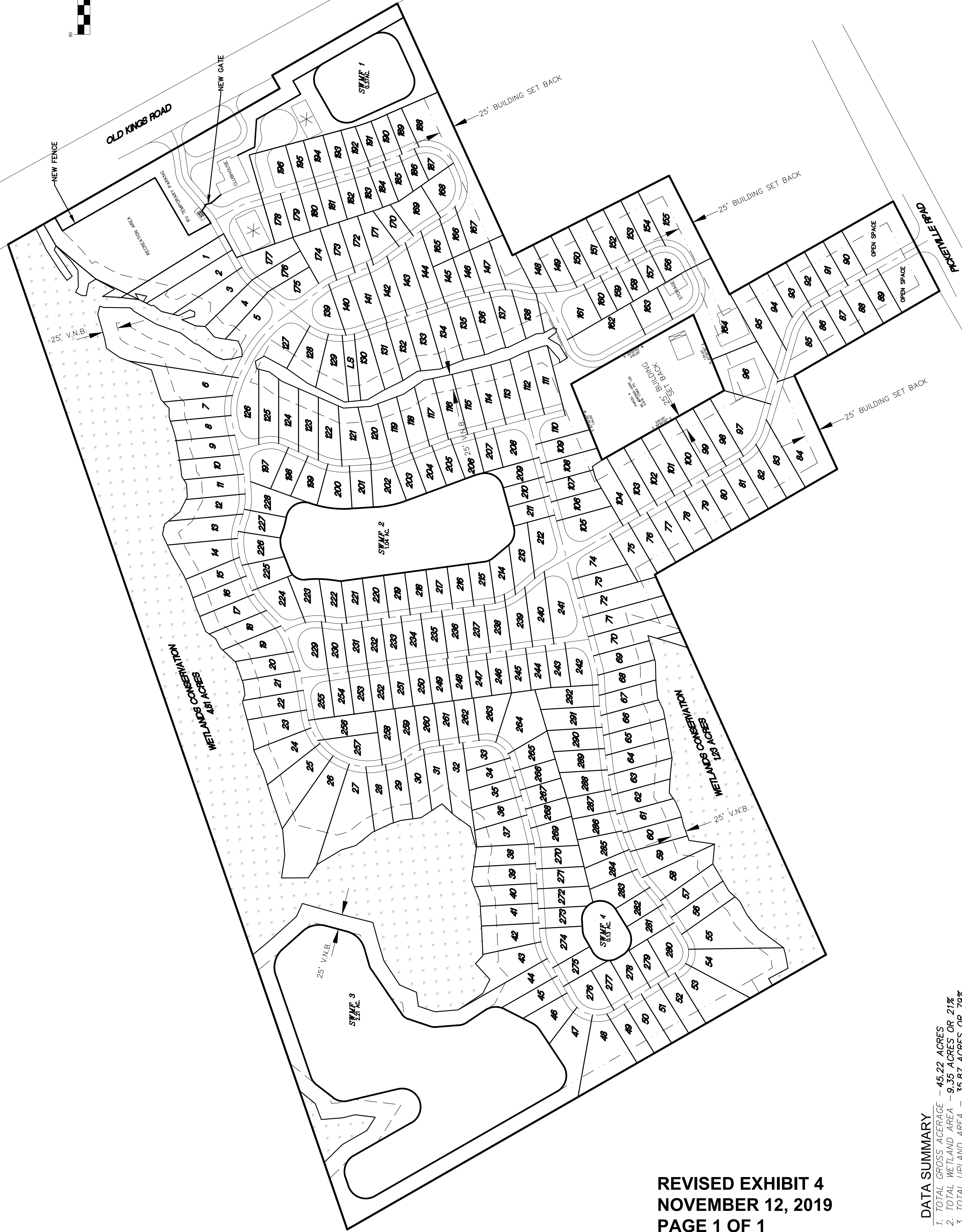
NORTH FLORIDA ENGINEERING SERVICES, INC.
 CERTIFICATION # 26085
 263 River Hills Drive, Jacksonville, FL 32216 //ph (904) 737-0971
 //fax (904) 396-5372 //email info@nfes.net //web www.nfes.net

JOB NUMBER: 16-016
 SCALE: 1" = 80'

* SHEET NUMBER *
1



GRAPHIC SCALE
 (IN FEET)
 1 inch = 80 ft.



**REVISED EXHIBIT 4
 NOVEMBER 12, 2019
 PAGE 1 OF 1**

- DATA SUMMARY**
- TOTAL GROSS ACREAGE - 45.22 ACRES
 - TOTAL WETLAND AREA - 9.35 ACRES OR 21%
 - TOTAL UPLAND AREA - 35.87 ACRES OR 79%
 - TOTAL ACTIVE RECREATION - 0.56 ACRES OR 2%
 - TOTAL PASSIVE OPEN SPACE - 15.36 ACRES OR 42%
 - MAXIMUM COVERAGE OF BUILDING AND STRUCTURES - 320,000 SQ.FT. OR 20%
 - NUMBER OF LOTS - 292
 - EXISTING AND PROPOSED ZONING IS RLD-60 & RR/PUD
 - MINIMUM LOT SIZE IS 30'x70'
 - ✕ DEPICTS LAUNDRY/OFFICE/UTILITY USE