

**FLOOR PLAN**

LOCATION	SIGN KEY		SQ FOOTAGE
	DESCRIPTION	ALLOWED	
A	WALL SIGN	33.5	30.22
B	WALL SIGN	30	17.9
C	WALL SIGN		4.74
<b>TOTAL</b>		<b>63.5 SF</b>	<b>52.64 SF</b>

CODE ALLOWS .5 SF PER LINEAL FRONTAGE

<b>Design #</b>	0823751AR05
<b>Sheet</b>	1 of 8
<b>Client</b>	HAWKERS
<b>Address</b>	1001 PARK ST. JACKSONVILLE, FL
<b>Account Rep.</b>	M MARIN
<b>Designer</b>	T BEST
<b>Date</b>	05/07/19

<b>Approval / Date</b>	
<b>Client</b>	
<b>Sales</b>	
<b>Estimating</b>	
<b>Art</b>	
<b>Engineering</b>	
<b>Landlord</b>	

<b>Revision/Date</b>	R01:PM:05/09/19:ADD OPT 2 FOR PLACEMENT (A), REVISE TO ORANGE/WHITE FACE (B)
	R02:EC:09/05/19: (A&B) REDUCE. ADD SIGN KEY.
	R03:EC:09/06/19: (A&B) INCREASE.
	R04:AG:10/17/19: REV TO NEW LOGO.
	R05:EL:12/11/19: REV SIZE (C).



<b>National Headquarters</b>	14201 Sovereign Road Houston, TX 77033 (281) 962-2888 Fax (281) 962-2844
<b>San Antonio</b>	17319 San Pedro Ave Ste 200 San Antonio, TX 78232 (210) 349-5804 Fax (210) 349-8724
<b>West Coast</b>	17709 Executive Ridge Dr Ste 255 West, CA 92081 (760) 784-1708 Fax (760) 734-3752
<b>Northeast US</b>	2301 River Road Suite 201 Norfolk, VA 23524 (800) 977-2828 Fax (800) 554-2075
<b>Georgia</b>	111 Woodstone Place Dawsonville, GA 30534 (678) 725-8822 Fax (201) 348-8724
<b>South Texas</b>	10109 J. Lee O'Neal Drive Portland, TX 78374 (861) 563-5399 Fax (861) 648-6533

This drawing is the property of Chandler Signs, LLC. All rights to its use for reproduction are reserved by Chandler Signs, LLC.

**FINAL ELECTRICAL CONNECTION BY CUSTOMER**

<b>Design #</b>	0823751AR05
<b>Sheet</b>	2 of 8
<b>Client</b>	HAWKERS
<b>Address</b>	1001 PARK ST. JACKSONVILLE, FL
<b>Account Rep.</b>	M MARIN
<b>Designer</b>	T BEST
<b>Date</b>	05/07/19
<b>Approval / Date</b>	
<b>Client</b>	
<b>Sales</b>	
<b>Estimating</b>	
<b>Art</b>	
<b>Engineering</b>	
<b>Landlord</b>	

Revision/Date
R01:PM:05/09/19:ADD OPT 2 FOR PLACEMENT (A), REVISE TO ORANGE/WHITE FACE (B)
R02:EC:09/05/19: (A&B) REDUCE. ADD SIGN KEY.
R03:EC:09/06/19: (A&B) INCREASE.
R04:AG:10/17/19: REV TO NEW LOGO.
R05:EL:12/11/19: REV SIZE (C).



**chandler signs.com**

**National Headquarters**  
14201 Sovereign Road  
Houston, TX 77033  
(281) 962-2888 Fax (281) 962-2844

**San Antonio**  
17319 San Pedro Ave  
Ste. 200  
San Antonio, TX 78232  
(210) 349-3804 Fax (210) 349-8724

**West Coast**  
13709 Executive Ridge Dr  
Ste. 205  
West, CA 92081  
(760) 734-1708 Fax (760) 734-3752

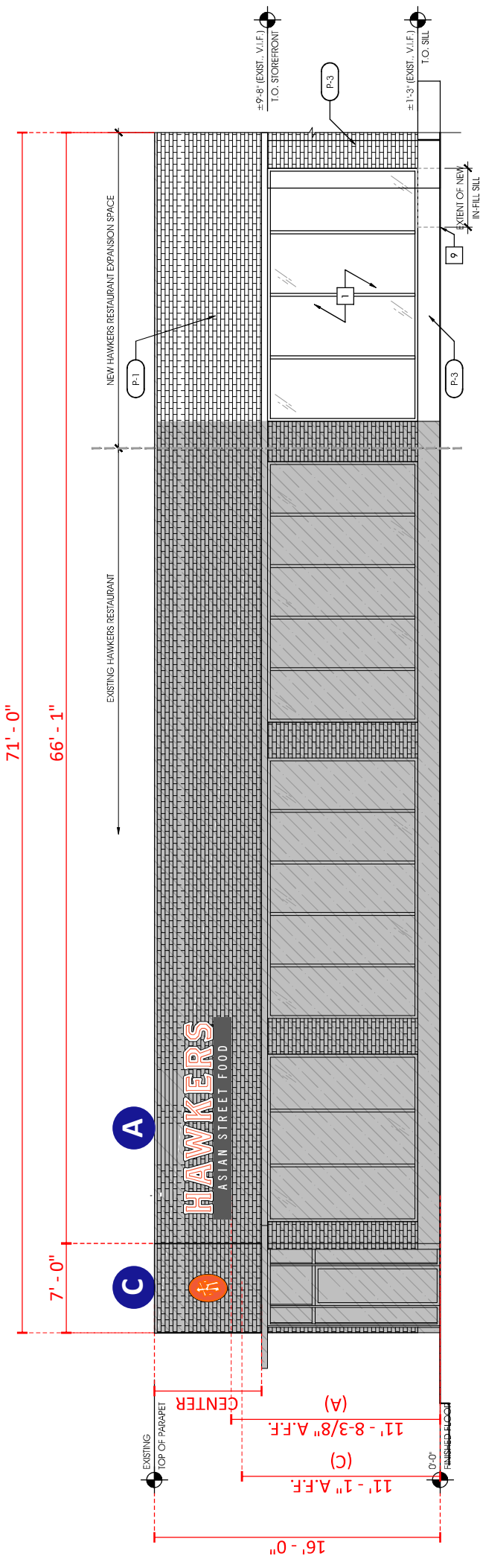
**Northeast US**  
2301 River Road  
Suite 201  
Norfolk, VA 23502  
(800) 977-9830 Fax (800) 554-2075

**Georgia**  
111 Woodstone Place  
Dawsonville, GA 30534  
(678) 725-8652 Fax (678) 348-8724

**South Texas**  
PO BOX 145 065 Orval Drive  
Portland, TX 78352  
(864) 563-5599 Fax (864) 648-6533

This drawing is the property of Chandler Signs, LLC. All rights to its use for reproduction are reserved by Chandler Signs, LLC.

**FINAL ELECTRICAL CONNECTION BY CUSTOMER**



**ELEVATION - PARK ST** SCALE: 1/8" = 1' - 0"

<b>Design #</b>	0823751AR05
<b>Sheet</b>	3 of 8
<b>Client</b>	HAWKERS
<b>Address</b>	1001 PARK ST. JACKSONVILLE, FL
<b>Account Rep.</b>	M MARIN
<b>Designer</b>	T BEST
<b>Date</b>	05/07/19
<b>Approval / Date</b>	
<b>Client</b>	
<b>Sales</b>	
<b>Estimating</b>	
<b>Art</b>	
<b>Engineering</b>	
<b>Landlord</b>	

Revision/Date
R01:PM:05/09/19:ADD OPT 2 FOR PLACEMENT (A), REVISE TO ORANGE/WHITE FACE (B)
R02:EC:09/05/19: (A&B) REDUCE. ADD SIGN KEY.
R03:EC:09/06/19: (A&B) INCREASE.
R04:AG:10/17/19: REV TO NEW LOGO.
R05:EL:12/11/19: REV SIZE (C).

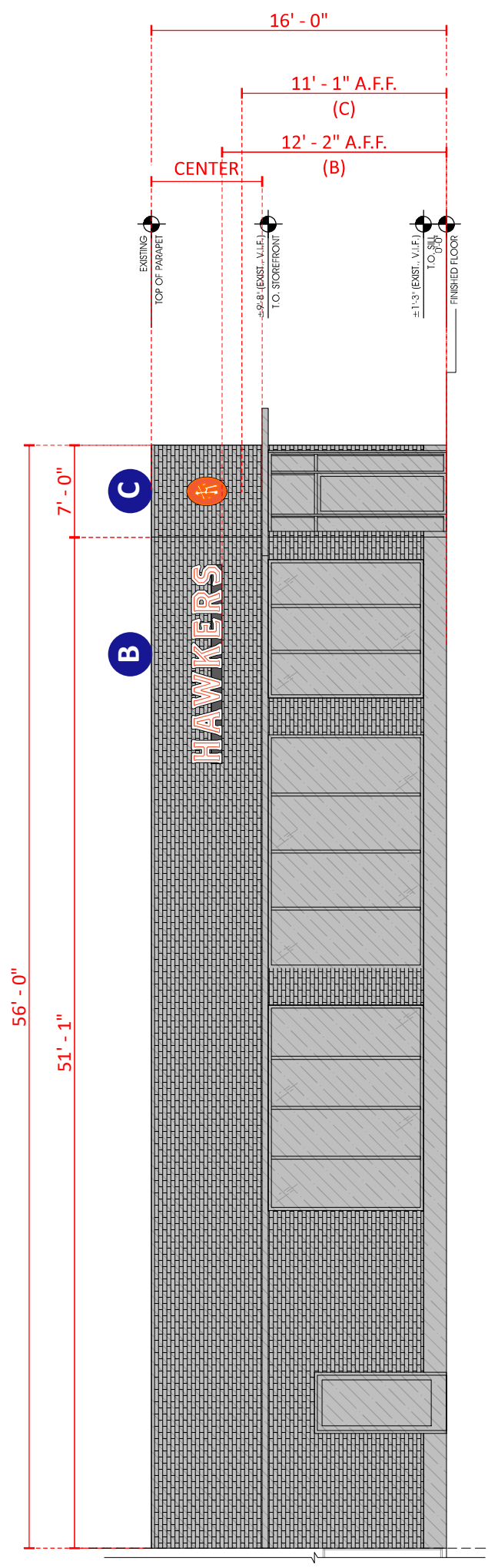


**chandler signs.com**

<b>National Headquarters</b>	14201 Sovereign Road Houston, TX 77033 (281) 962-2800 Fax (281) 962-2844
<b>San Antonio</b>	17319 San Pedro Ave Ste. 200 San Antonio, TX 78232 (210) 349-3804 Fax (210) 349-8724
<b>West Coast</b>	13709 Executive Ridge Dr Ste. 255 Visalia, CA 93201 (559) 734-1708 Fax (559) 734-3752
<b>Northeast US</b>	2301 River Road Suite 201 Norfolk, VA 23502 (757) 977-9800 Fax (757) 954-2075
<b>Georgia</b>	111 Woodstone Place Dawsonville, GA 30534 (678) 725-8652 Fax (678) 346-8724
<b>South Texas</b>	40109 J. Lee O'Neal Drive Portland, TX 78352 (817) 563-5599 Fax (817) 648-6533

This drawing is the property of Chandler Signs, LLC. All rights to its use for reproduction are reserved by Chandler Signs, LLC.

**FINAL ELECTRICAL CONNECTION BY CUSTOMER**



**ELEVATION - POST ST** SCALE: 1/8" = 1' - 0"

<b>Design #</b>	0823751AR05
<b>Sheet</b>	4 of 8
<b>Client</b>	HAWKERS
<b>Address</b>	1001 PARK ST. JACKSONVILLE, FL
<b>Account Rep.</b>	M MARIN
<b>Designer</b>	T BEST
<b>Date</b>	05/07/19

Approval / Date
Client
Sales
Estimating
Art
Engineering
Landlord

Revision/Date
R01:PM:05/09/19:ADD OPT 2 FOR PLACEMENT (A), REVISE TO ORANGE/WHITE FACE (B)
R02:EC:09/05/19: (A&B) REDUCE. ADD SIGN KEY.
R03:EC:09/06/19: (A&B) INCREASE.
R04:AG:10/17/19: REV TO NEW LOGO.
R05:EL:12/11/19: REV SIZE (C).



**chandler signs.com**

**National Headquarters**  
14201 Sovereign Road  
Houston, TX 77033  
(281) 962-2888 Fax (281) 962-2844

**San Antonio**  
17319 San Pedro Ave  
Ste 200  
San Antonio, TX 78232  
(210) 348-3804 Fax (210) 348-8724

**West Coast**  
17209 Executive Ridge Dr  
Ste 255  
Visalia, CA 93201  
(559) 734-1708 Fax (559) 734-3752

**Northeast US**  
Suite 201  
1000 River Road  
Norfolk, VA 23502  
(757) 977-9850 Fax (757) 954-2075

**Georgia**  
111 Woodstone Place  
Dawsonville, GA 30534  
(678) 725-8822 Fax (678) 348-8724

**South Texas**  
PO BOX 125 265 Oryal Drive  
Portland, TX 78352  
(864) 563-5599 Fax (864) 648-6533

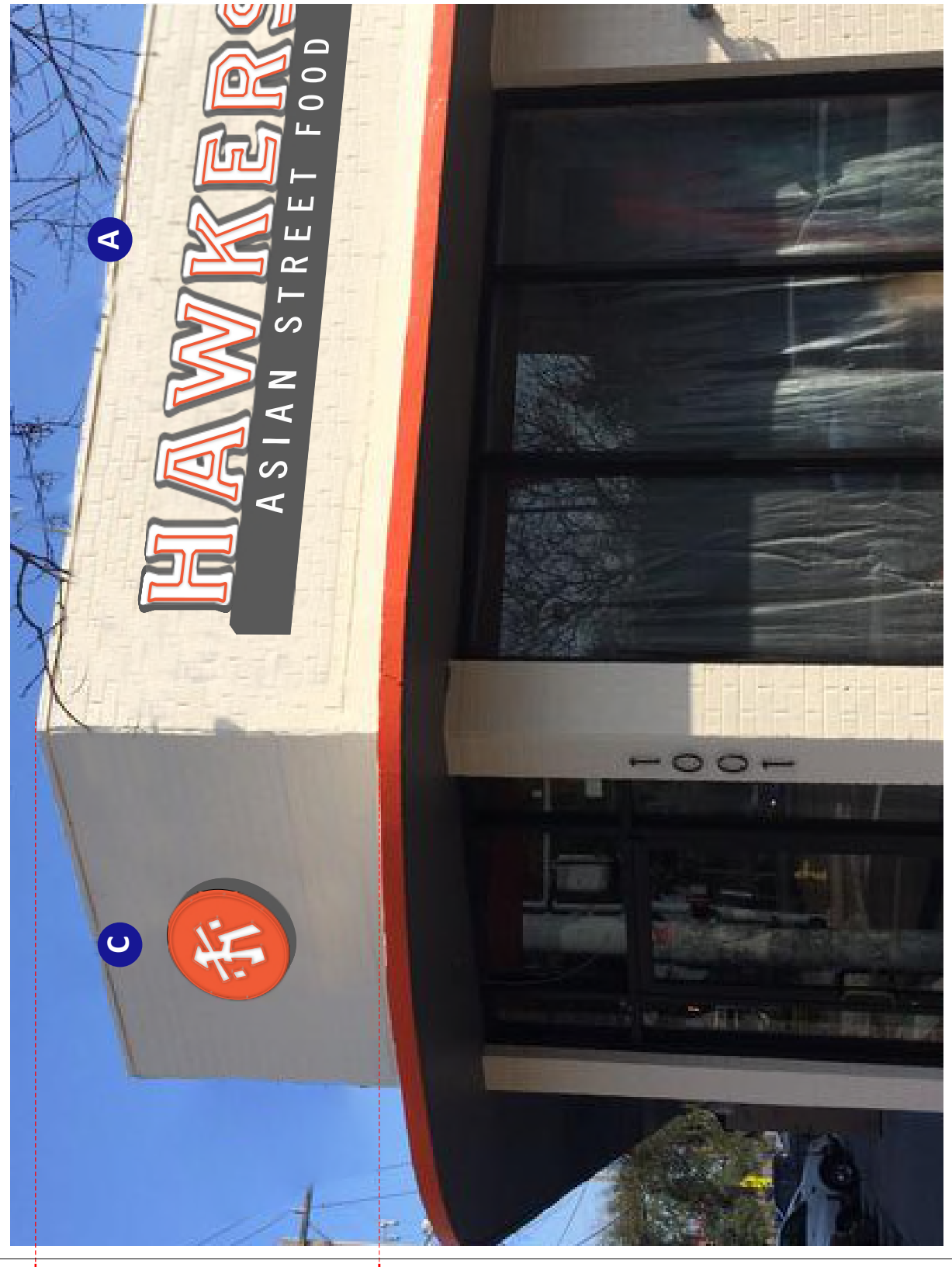
This drawing is the property of Chandler Signs, LLC. All rights to its use for reproduction are reserved by Chandler Signs, LLC.

**FINAL ELECTRICAL CONNECTION BY CUSTOMER**



**REMOVE & DISPOSE OF EXISTING SIGNAGE AND GOOSENECK LAMPS. PATCH AND SPOT PAINT AS REQUIRED.**

**EXISTING CONDITIONS**



**PROPOSED**



<b>Design #</b>	0823751AR05
<b>Sheet</b>	5 of 8
<b>Client</b>	HAWKERS
<b>Address</b>	1001 PARK ST. JACKSONVILLE, FL
<b>Account Rep.</b>	M MARIN
<b>Designer</b>	T BEST
<b>Date</b>	05/07/19

Approval / Date	
Client	
Sales	
Estimating	
Art	
Engineering	
Landlord	

Revision/Date
R01:PM:05/09/19:ADD OPT 2 FOR PLACEMENT (A), REVISE TO ORANGE/WHITE FACE (B)
R02:EC:09/05/19: (A&B) REDUCE. ADD SIGN KEY.
R03:EC:09/06/19: (A&B) INCREASE.
R04:AG:10/17/19: REV TO NEW LOGO.
R05:EL:12/11/19: REV SIZE (C).



**chandler signs.com**

**National Headquarters**  
14201 Sovereign Road  
Houston, TX 77033  
(281) 962-2888 Fax (281) 962-2844

**San Antonio**  
17319 San Pedro Ave  
Ste. 200  
San Antonio, TX 78232  
(210) 348-3804 Fax (210) 348-8724

**West Coast**  
13709 Executive Ridge Dr  
Ste. 255  
Visita, CA 92081  
(760) 734-1708 Fax (760) 734-3752

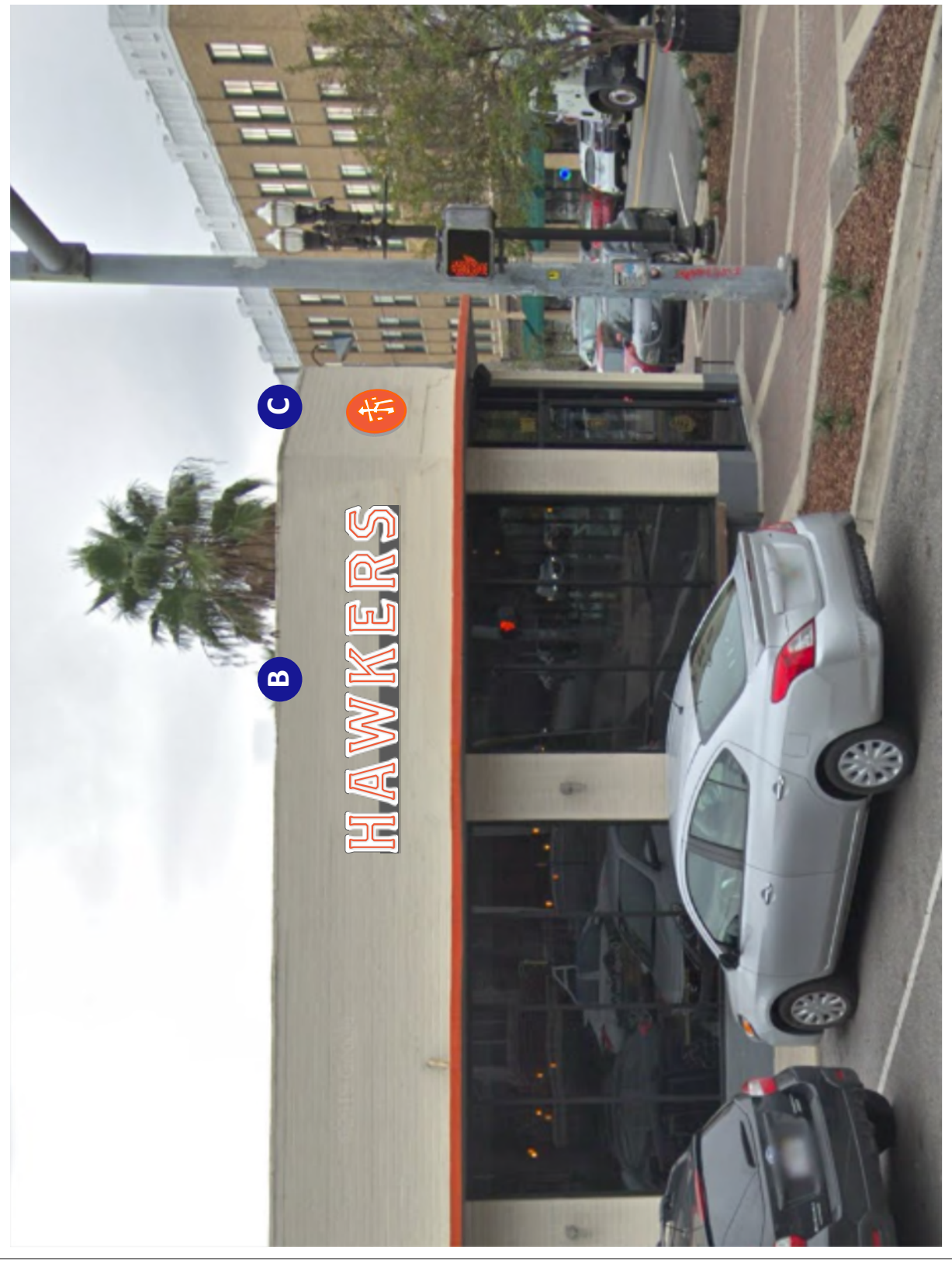
**Northeast US**  
2301 River Road  
Suite 201  
Portsmouth, VA 23724  
(800) 977-8880 Ltd. (800) 554-2075

**Georgia**  
111 Woodstone Place  
Dawsonville, GA 30534  
(678) 725-8852 Fax (201) 348-8724

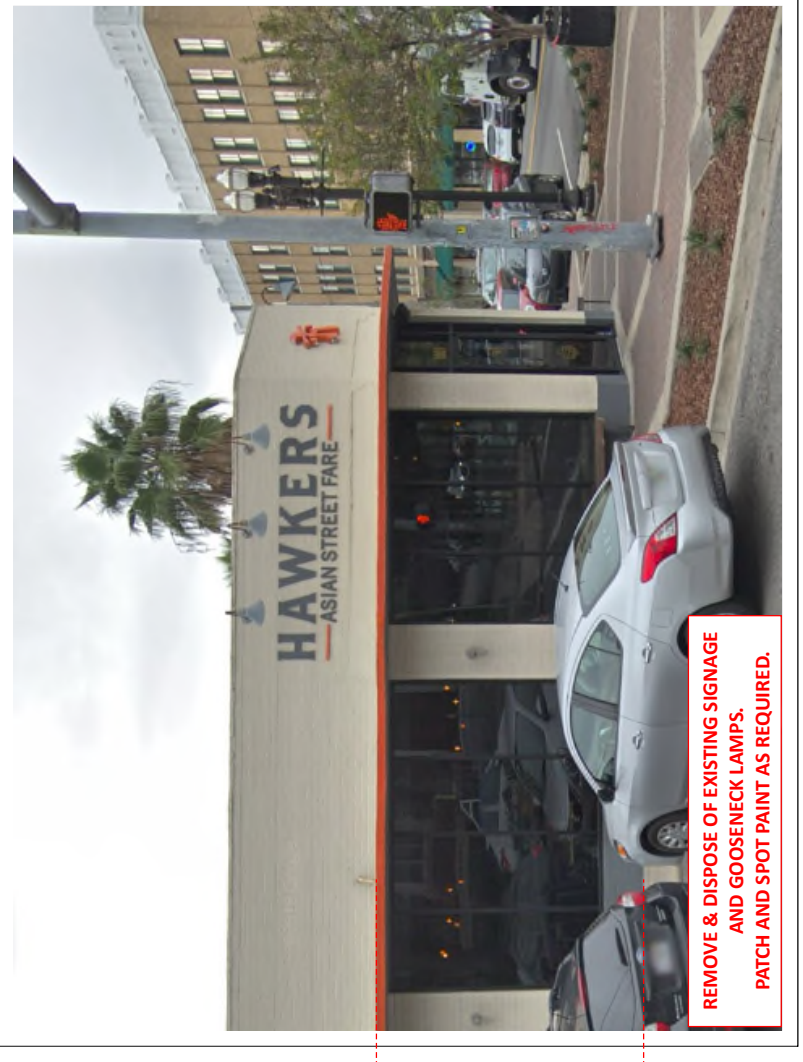
**South Texas**  
10109 J. Lee Byrd Drive  
Portland, TX 78354  
(864) 563-5399 Fax (864) 648-6833

This drawing is the property of Chandler Signs, LLC. All rights to its use for reproduction are reserved by Chandler Signs, LLC.

**FINAL ELECTRICAL CONNECTION BY CUSTOMER**



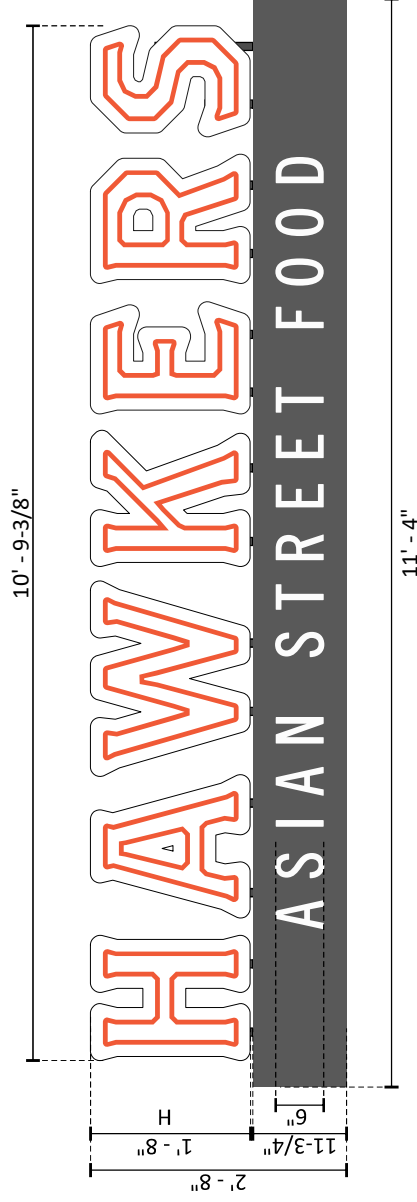
**PROPOSED**



**REMOVE & DISPOSE OF EXISTING SIGNAGE AND GOOSENECK LAMPS. PATCH AND SPOT PAINT AS REQUIRED.**

**EXISTING CONDITIONS**

8'-6"



**A** **OPEN FACE NEON LETTERS**

ONE (1) REQUIRED - MANUFACTURE & INSTALL SCALE: 1/2" = 1' - 0"  
30.22 SQFT

GENERAL SPECIFICATIONS

LETTERS:

MANUFACTURE AND INSTALL NEW 3" DEEP OPEN-FACE ALUMINUM CHANNEL LETTERS.

RETURNS ARE PTM PMS 425C GRAY. INTERIOR OF CANS PAINTED MAP WHITE

INTERNALLY ILLUMINATE WITH 15MM ORANGE NEON TUBING & 30mA TRANSFORMERS HOUSED IN TAGLINE CABINET BELOW.

MOUNT TO TOP OF RACEWAY CABINET W/ 1" SQ TUBE SUPPORTS PAINTED TO MATCH PMS 425C GRAY.

TAGLINE CABINET:

MANUFACTURE AND INSTALL NEW 12" DEEP ROPT CABINET PTM PMS 425C

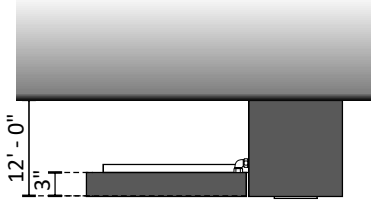
COPY IS 1/2" THICK [1/4" PROJECTION] CLEAR ACRYLIC W/ 1ST SURFACE 3630-20 WHITE VINYL & 2ND SURFACE WHITE DIFFUSER FILM. INTERNALLY ILLUMINATE WITH PRE FINISHED WHITE LED PANEL

HOUSE POWER SUPPLIES IN CABINET

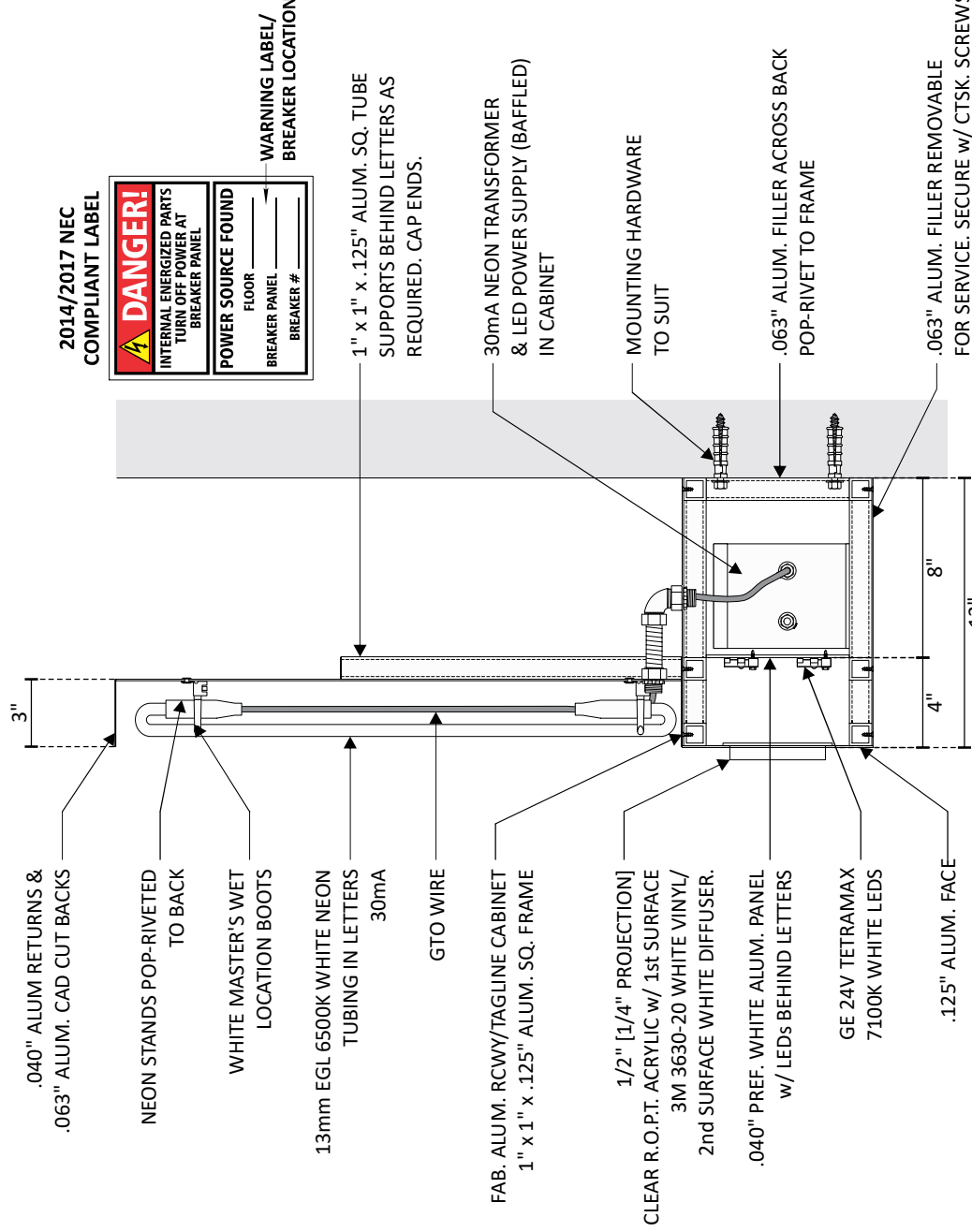
MOUNT FLUSH TO WALL WITH MOUNTING HARDWARE TO SUIT



**NIGHT VIEW**



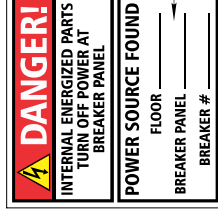
**END VIEW**



**PRELIM. DETAIL**

SCALE: 1-1/2" = 1' - 0"

2014/2017 NEC  
COMPLIANT LABEL



<b>Design #</b>	0823751AR05
<b>Sheet</b>	6 of 8
<b>Client</b>	HAWKERS
<b>Address</b>	1001 PARK ST. JACKSONVILLE, FL
<b>Account Rep.</b>	M MARIN
<b>Designer</b>	T BEST
<b>Date</b>	05/07/19
<b>Approval / Date</b>	
<b>Client</b>	
<b>Sales</b>	
<b>Estimating</b>	
<b>Art</b>	
<b>Engineering</b>	
<b>Landlord</b>	

<b>Revision/Date</b>	R01:PM:05/09/19:ADD OPT 2 FOR PLACEMENT (A), REVISE TO ORANGE/WHITE FACE (B)
	R02:EC:09/05/19: (A&B) REDUCE. ADD SIGN KEY.
	R03:EC:09/06/19: (A&B) INCREASE.
	R04:AG:10/17/19: REV TO NEW LOGO.
	R05:EL:12/11/19: REV SIZE (C).



chandler signs.com

**National Headquarters**  
14201 Sovereign Road  
Houston, TX 77033  
(281) 962-2888 Fax (281) 962-2044

**San Antonio**  
17319 San Pedro Ave  
Ste 200  
San Antonio, TX 78232  
(210) 349-3804 Fax (210) 349-8724

**West Coast**  
13209 Executive Ridge Dr  
Suite 255  
Vista, CA 92081  
(760) 794-1708 Fax (760) 794-3732

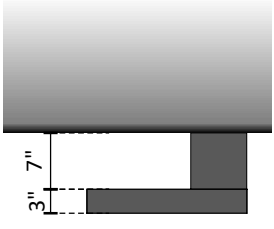
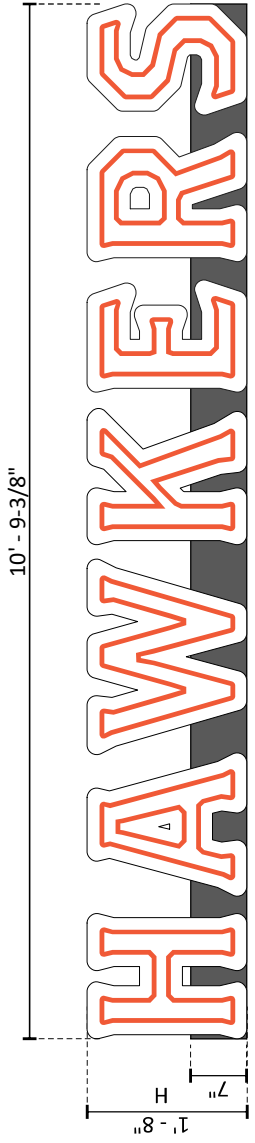
**Northeast US**  
2301 River Road  
Suite 201  
Knox, TN 37624  
(615) 597-9888 Fax (615) 594-2075

**Georgia**  
111 Woodstone Place  
Dawsonville, GA 30534  
(678) 725-8822 Fax (678) 348-8724

**South Texas**  
10106 W. 145th Oryal Drive  
Portland, TX 78324  
(861) 583-5399 Fax (861) 648-6833

This drawing is the property of Chandler Signs, LLC. All rights to its use for reproduction are reserved by Chandler Signs, LLC

**FINAL ELECTRICAL CONNECTION BY CUSTOMER**



**B** OPEN FACE NEON LETTERS W/ RACEWAY SCALE: 1/2" = 1' - 0"  
ONE [1] REQUIRED - MANUFACTURE & INSTALL 17.9 SOFT

GENERAL SPECIFICATIONS

MANUFACTURE AND INSTALL NEW 3" DEEP OPEN-FACE ALUMINUM CHANNEL LETTERS.

PAINT RETURNS TO MATCH PMS 425C GRAY. INTERIOR OF CANS PAINTED MAP WHITE

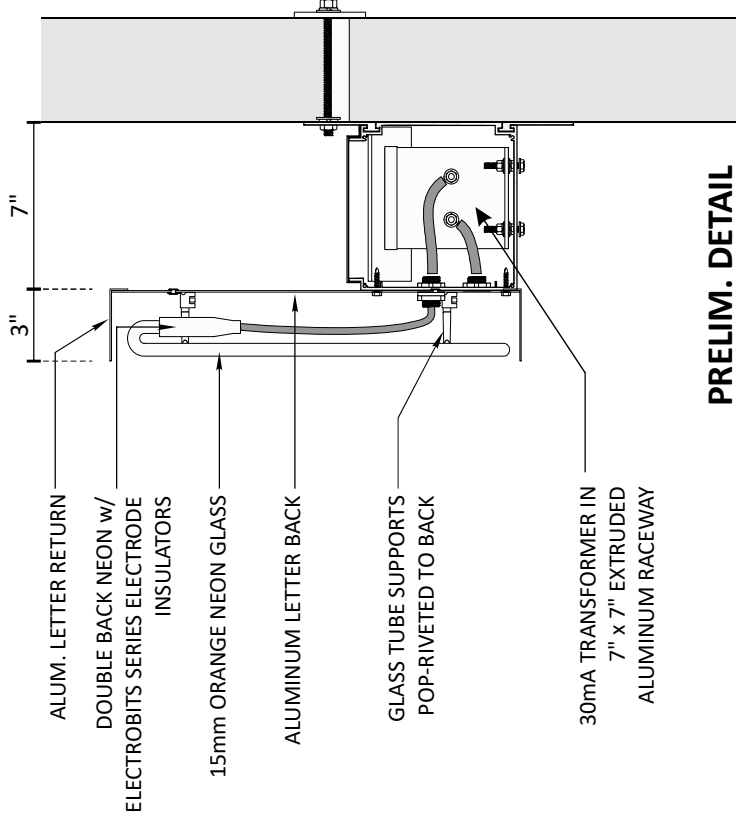
INTERNALLY ILLUMINATE WITH 15MM ORANGE NEON TUBING & 30mA TRANSFORMERS HOUSED IN EXTRUDED ALUMINUM RACEWAY. PAINT RACEWAY TO MATCH PMS 425C GRAY.

MOUNT FLUSH TO WALL WITH MOUNTING HARDWARE TO SUIT



**NIGHT VIEW**

END VIEW



**PRELIM. DETAIL**  
SCALE: 1-1/2" = 1' - 0"

<b>Design #</b>	0823751AR05
<b>Sheet</b> 7 <b>of</b> 8	
<b>Client</b>	HAWKERS
<b>Address</b>	1001 PARK ST. JACKSONVILLE, FL
<b>Account Rep.</b>	M MARIN
<b>Designer</b>	T BEST
<b>Date</b>	05/07/19

Approval / Date	
Client	
Sales	
Estimating	
Art	
Engineering	
Landlord	

Revision/Date	
R01:PM:05/09/19:ADD OPT 2 FOR PLACEMENT (A), REVISE TO ORANGE/WHITE FACE (B)	
R02:EC:09/05/19: (A&B) REDUCE. ADD SIGN KEY.	
R03:EC:09/06/19: (A&B) INCREASE.	
R04:AG:10/17/19: REV TO NEW LOGO.	
R05:EL:12/11/19: REV SIZE (C).	

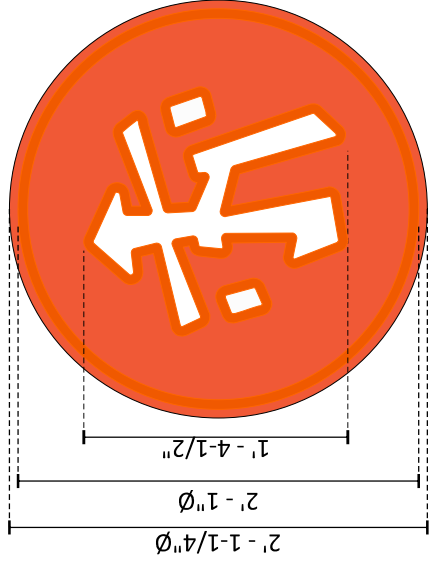


<b>National Headquarters</b>	14201 Sovereign Road Houston, TX 77034 (281) 962-2888 Fax (281) 962-2844
<b>San Antonio</b>	17319 San Pedro Ave Ste 200 San Antonio, TX 78232 (210) 349-8804 Fax (210) 349-8724
<b>West Coast</b>	17209 Executive Ridge Dr Suite 255 Visalia, CA 93201 (559) 734-1708 Fax (559) 734-3752
<b>Northeast US</b>	2301 River Road Suite 201 Norfolk, VA 23502 (757) 977-9850 Cell (800) 554-2075
<b>Georgia</b>	111 Woodstone Place Dawsonville, GA 30534 (678) 725-8652 Fax (201) 348-8724
<b>South Texas</b>	PO BOX 125 065 Orval Drive Portland, TX 78352 (861) 563-5599 Fax (861) 648-6533

This drawing is the property of Chandler Signs, LLC. All rights to its use for reproduction are reserved by Chandler Signs, LLC

**FINAL ELECTRICAL CONNECTION BY CUSTOMER**





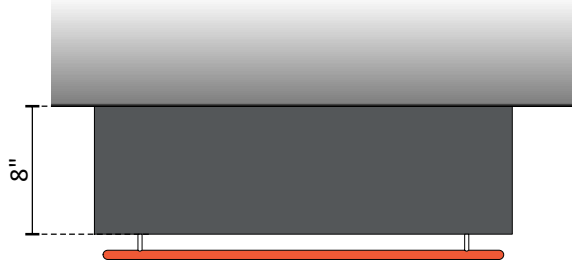
**C NEON WALL SIGN** SCALE: 1" = 1' - 0"  
ONE [1] REQUIRED - MANUFACTURE & INSTALL **4.74 SOFT**

GENERAL SPECIFICATIONS

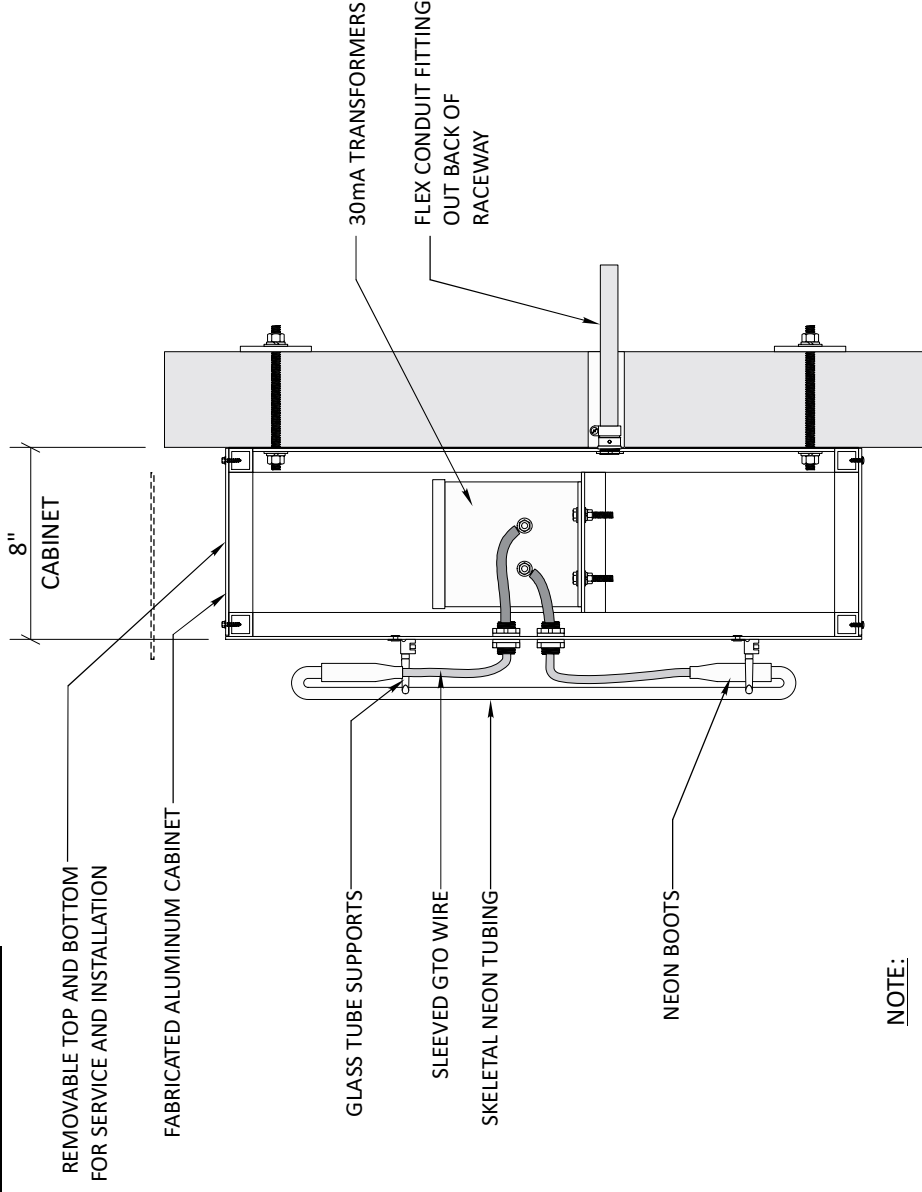
- MANUFACTURE AND INSTALL NEW 8" DEEP FABRICATED ALUMINUM CABINET
- PAINT FACE ORANGE (EXACT COLOR TBD) AND MAP WHITE. PAINT RETURNS TO MATCH PMS 425C GRAY.
- ILLUMINATE WITH 15MM SKELETAL ORANGE NEON MOUNTED TO CABINET FACE.
- HOUSE 30mA TRANSFORMERS IN CABINET
- SIGN MOUNTS FLUSH TO WALL



**NIGHT VIEW**



**END VIEW**



**NOTE:**

ALL WIRING TO BE IN ACCORDANCE WITH UL, NEC AND LOCAL CODES. **PRELIM. DETAIL**  
SCALE: 1-1/2" = 1' - 0"

<b>Design #</b>	0823751AR05
<b>Sheet</b> 8 <b>of</b> 8	
<b>Client</b>	HAWKERS
<b>Address</b>	1001 PARK ST. JACKSONVILLE, FL
<b>Account Rep.</b>	M MARIN
<b>Designer</b>	T BEST
<b>Date</b>	05/07/19

<b>Approval / Date</b>	
<b>Client</b>	
<b>Sales</b>	
<b>Estimating</b>	
<b>Art</b>	
<b>Engineering</b>	
<b>Landlord</b>	

<b>Revision/Date</b>	R01:PM:05/09/19:ADD OPT 2 FOR PLACEMENT (A), REVISE TO ORANGE/WHITE FACE (B)
	R02:EC:09/05/19: (A&B) REDUCE. ADD SIGN KEY.
	R03:EC:09/06/19: (A&B) INCREASE.
	R04:AG:10/17/19: REV TO NEW LOGO.
	R05:EL:12/11/19: REV SIZE (C).



chandler signs.com

<b>National Headquarters</b>	14201 Sovereign Road Houston, TX 77033 (281) 962-2800 Fax (281) 962-2844
<b>San Antonio</b>	17319 San Pedro Ave Ste. 200 San Antonio, TX 78232 (210) 348-3804 Fax (210) 348-8724
<b>West Coast</b>	17709 Executive Ridge Dr Ste. 255 Visalia, CA 93201 (559) 734-1708 Fax (559) 734-3752
<b>Northeast US</b>	2301 River Road Suite 201 Norfolk, VA 23502 (757) 977-9800 Fax (757) 977-9800
<b>Georgia</b>	111 Woodstone Place Dawsonville, GA 30534 (706) 725-8652 Fax (706) 725-8724
<b>South Texas</b>	PO BOX 135 065 Orval Drive Portland, TX 78352 (817) 563-5599 Fax (817) 648-6533

This drawing is the property of Chandler Signs, LLC. All rights to its use for reproduction are reserved by Chandler Signs, LLC.

**FINAL ELECTRICAL CONNECTION BY CUSTOMER**