

PROJECT SITE  
ACREAGE = 450.33 AC

NORTH

LEM TURNER ROAD

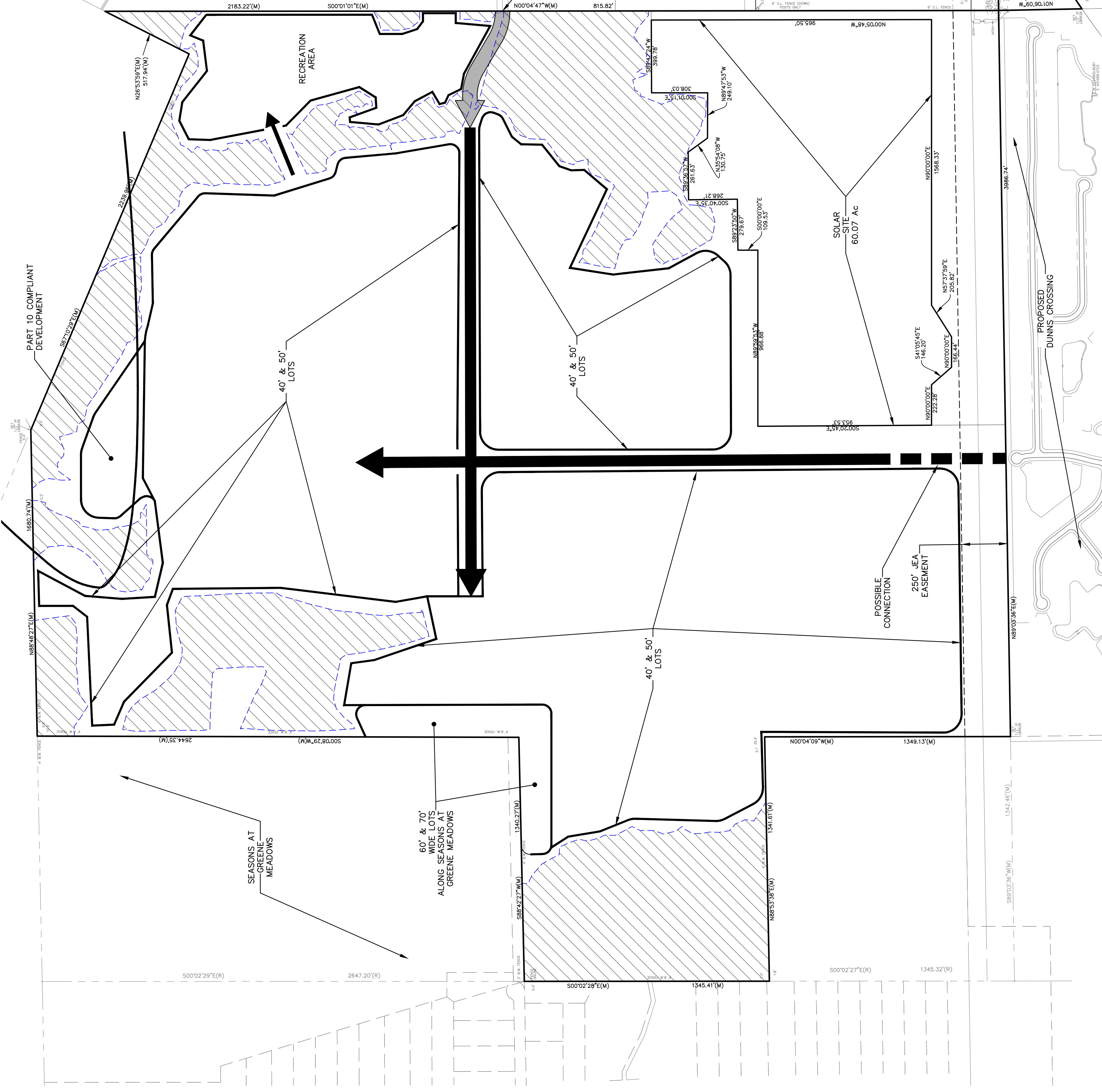
HEMLOCK STREET

PROJECT ACCESS

SIGN TRACT

SOLAR SITE  
60.07 AC

PROPOSED  
DUNNS CROSSING



Sheet No. 1 of 1  
**ZM-1**  
DWG. NO.

VINCENT J. DUNN ENGINEER NO. 99452  
DAVID M. TAYLOR ENGINEER NO. 44164  
GLEN R. WIEGGER ENGINEER NO. 84149  
CERTIFICATE OF AUTHORIZATION NO. 57189

LT RESIDENTIAL PUD  
DUVAL COUNTY, FLORIDA  
ZONING MAP

**Dunn & Associates, Inc.**  
CIVIL ENGINEERS / LAND PLANNERS  
8647 Boypine Road Building 1, Suite 200  
Jacksonville, Florida 32256  
Phone: (904)363-8916 Fax: (904)363-8917  
www.dunneng.com

DESIGNED BY: DAI  
DRAWN BY: SM  
CHECKED BY: V. DUNN  
SCALE: 1" = 300'  
DATE: September 6, 2019  
PROJ. NO.: LEM TURNER SITE

NO.	DATE	REVISIONS DESCRIPTION	BY: