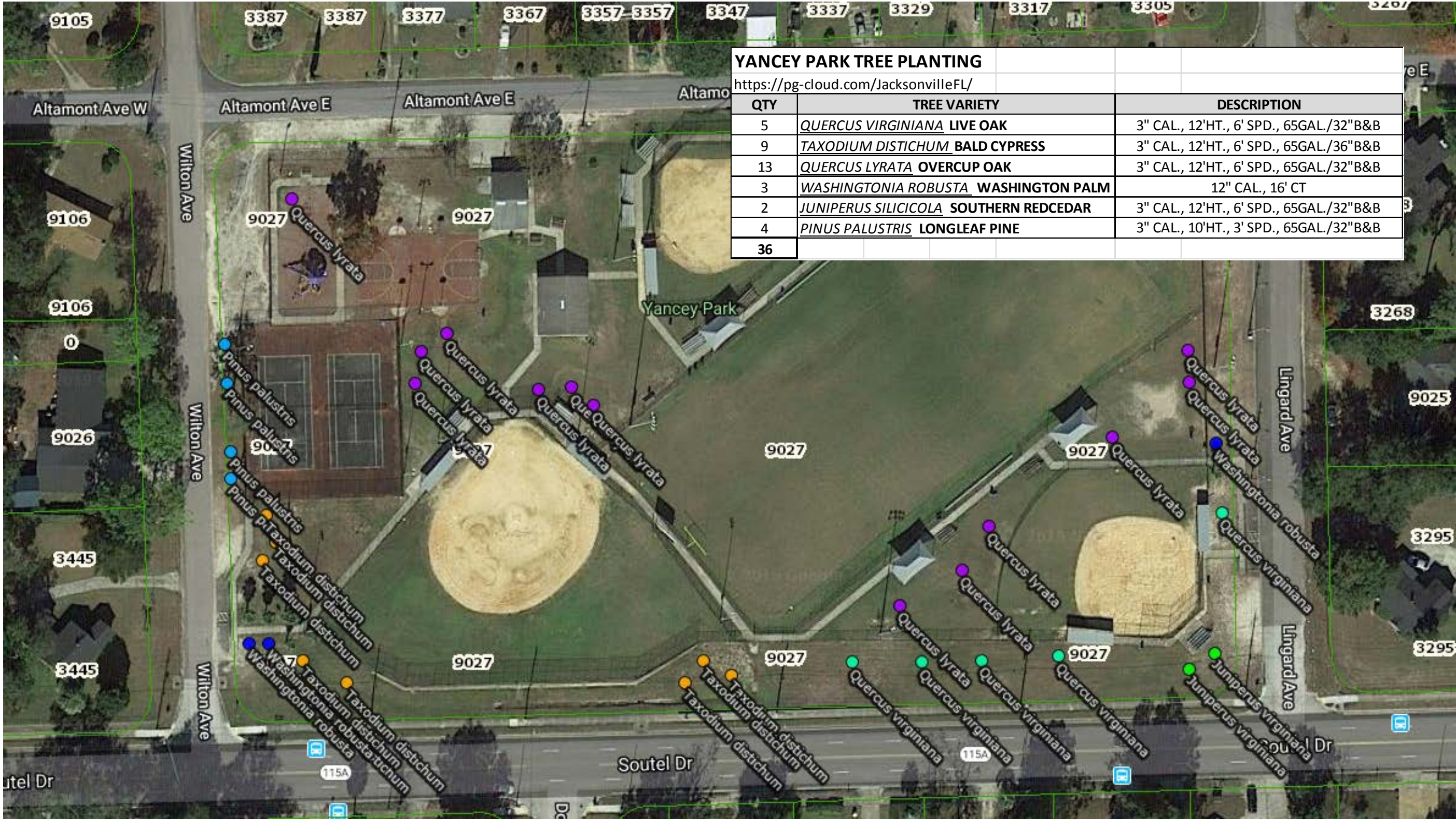


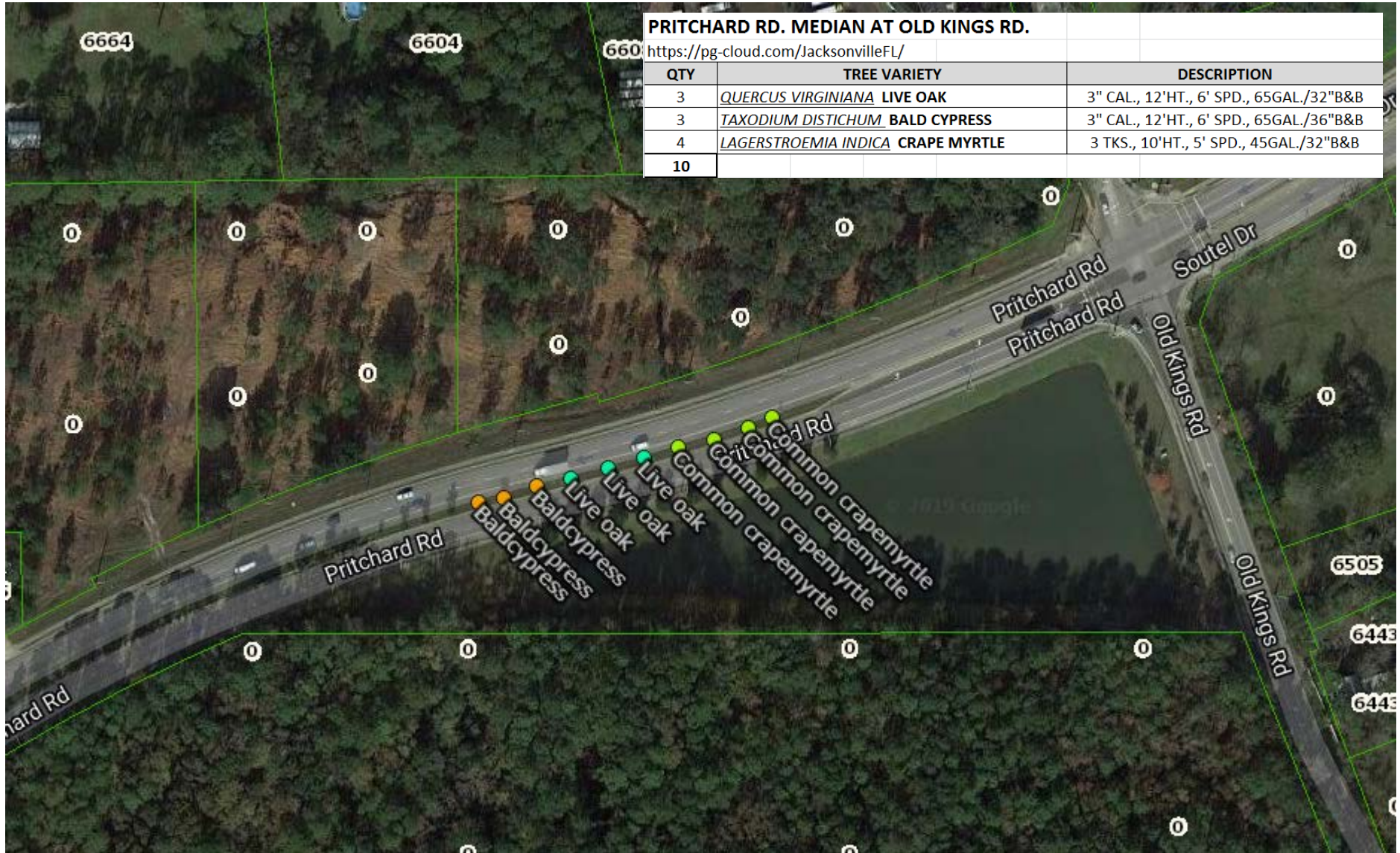
YANCEY PARK TREE PLANTING

9027 WILTON AVE.



YANCEY PARK TREE PLANTING		
https://pg-cloud.com/JacksonvilleFL/		
QTY	TREE VARIETY	DESCRIPTION
5	<i>QUERCUS VIRGINIANA</i> LIVE OAK	3" CAL., 12'HT., 6' SPD., 65GAL./32"B&B
9	<i>TAXODIUM DISTICHUM</i> BALD CYPRESS	3" CAL., 12'HT., 6' SPD., 65GAL./36"B&B
13	<i>QUERCUS LYRATA</i> OVERCUP OAK	3" CAL., 12'HT., 6' SPD., 65GAL./32"B&B
3	<i>WASHINGTONIA ROBUSTA</i> WASHINGTON PALM	12" CAL., 16' CT
2	<i>JUNIPERUS SILICICOLA</i> SOUTHERN REDCEDAR	3" CAL., 12'HT., 6' SPD., 65GAL./32"B&B
4	<i>PINUS PALUSTRIS</i> LONGLEAF PINE	3" CAL., 10'HT., 3' SPD., 65GAL./32"B&B
36		

PRITCHARD RD. MEDIAN TREE PLANTING
PRITCHARD RD. AND OLD KINGS RD.

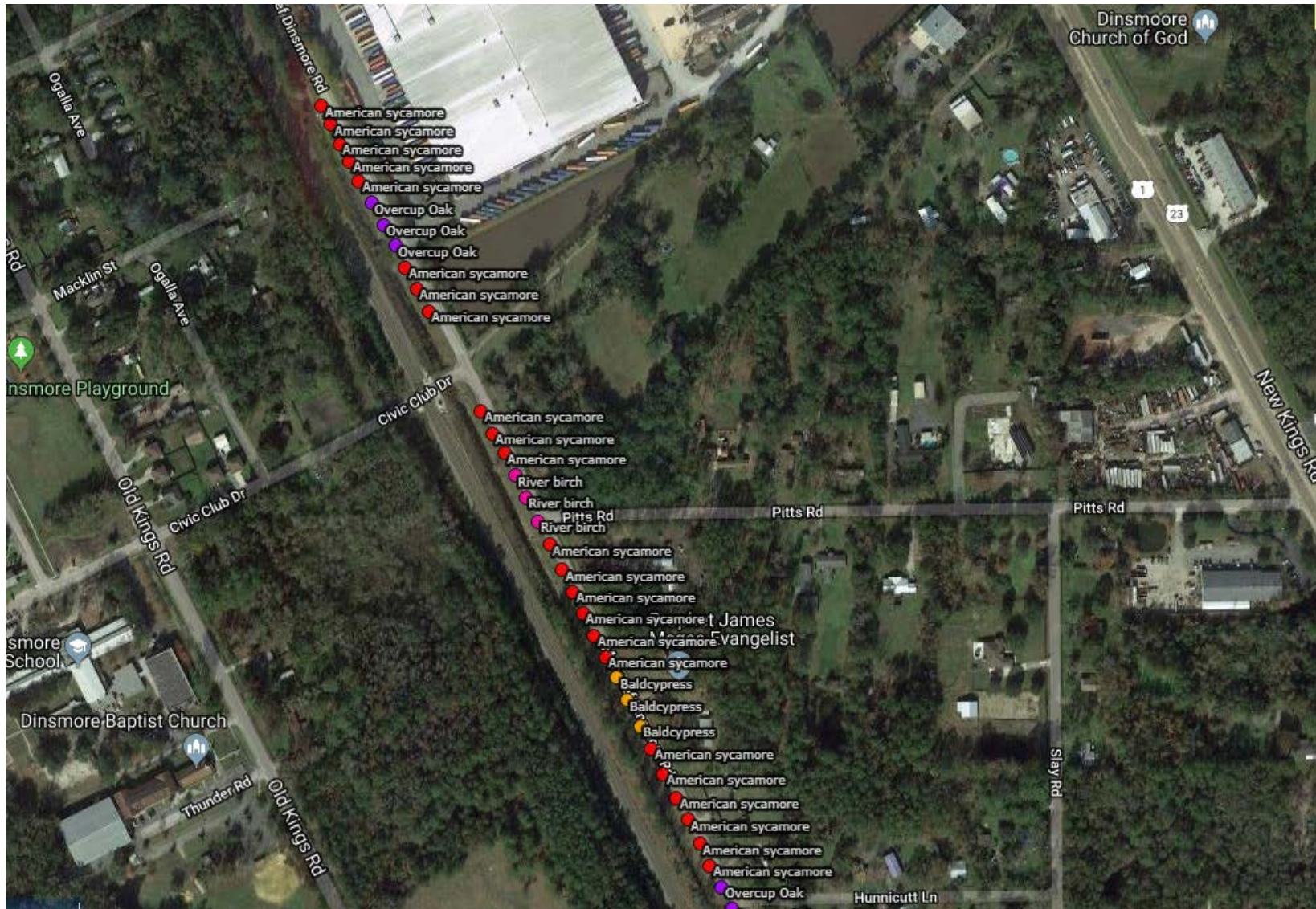




MONCRIEF DINSMORE TREE PLANTING EXHIBIT

City of Jacksonville – Public Works

July 10, 2019

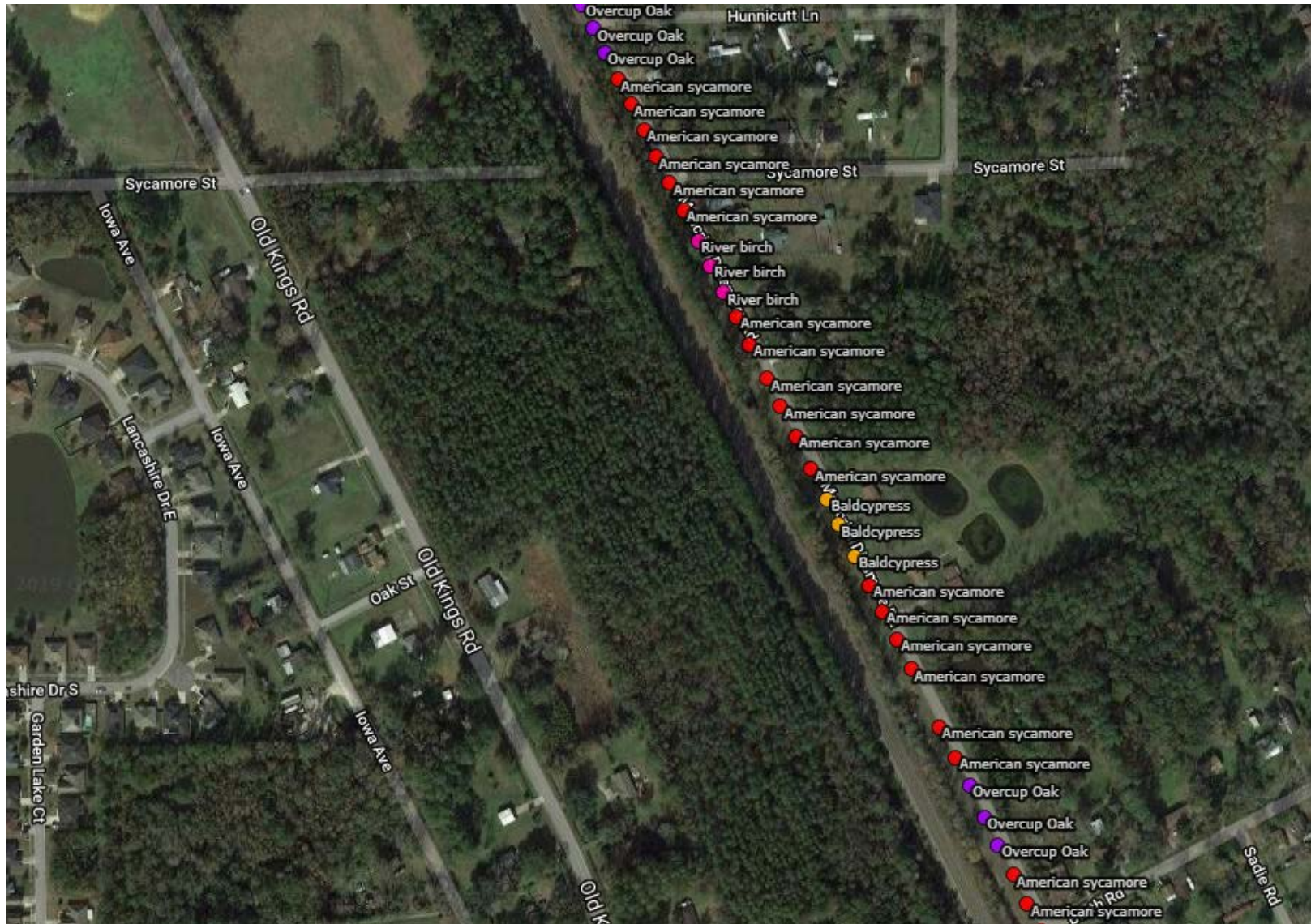




MONCRIEF DINSMORE TREE PLANTING EXHIBIT

City of Jacksonville – Public Works

July 10, 2019

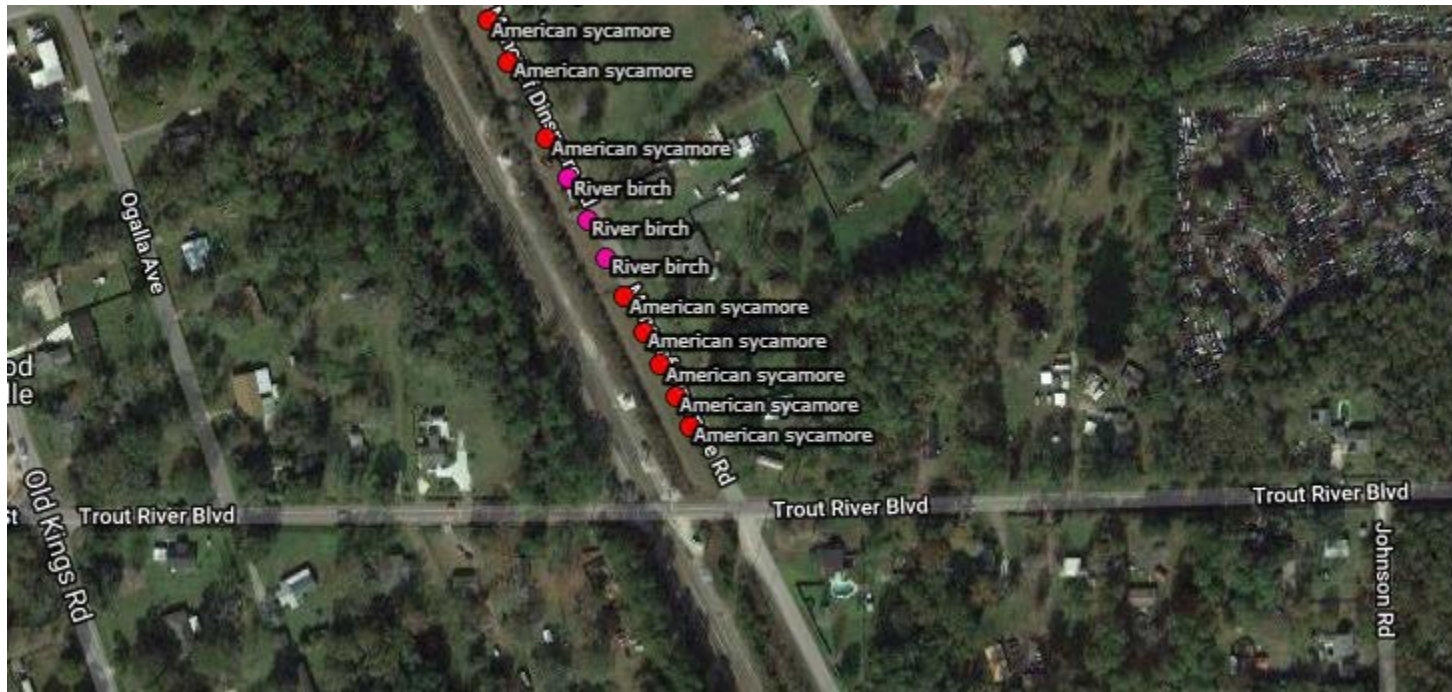




MONCRIEF DINSMORE TREE PLANTING EXHIBIT

City of Jacksonville – Public Works

July 10, 2019





THE DAVEY TREE EXPERT COMPANY
 4563 Sunbeam Road
 Jacksonville, Florida 32257

May 31, 2019

To: Kathleen McGovern
 Mowing & Landscape Maintenance Division
 City of Jacksonville

Re: COJ District 8 Plantings

The Davey Tree Expert Company proposes to furnish all necessary labor, materials, equipment, transportation, taxes and insurance as per specification.

Description of Services

Yancey Park Tree Planting

Task	Specs	Quantity	Unit	Unit Price	Total
Live Oak	3' Cal, 12"Ht,6' Spd	5	EA	\$ 2,607.26	\$13,036.30
Bald Cypress	3" Cal, 12' Ht, 6' Spd	9	EA	\$ 2,305.00	\$ 20,745.00
Overcup	3" Cal, 12' Ht, 6' Spd	13	EA	\$2,113.77	\$27,479.01
Southern Red Cedar	3" Cal, 12' Ht, 6' Spd	2	EA	\$2,360.52	\$4,721.04
Long Leaf Pine	3" Cal, 10' Ht, 3' Spd	4	EA	\$2,360.52	\$9,442.08
Washington Palm	12" Cal, 16' CT	3	EA	\$2,426.32	7,278.96

Total: \$82,702.39

Pritchard Rd. Median at Old Kings Rd.

Task	Specs	Quantity	Unit	Unit Price	Total
Live Oak	3' Cal, 12"Ht,6' Spd	3	EA	\$ 2,607.26	\$7,821.78
Bald Cypress	3" Cal, 12' Ht, 6' Spd	3	EA	\$ 2,305.00	\$ 6,915.00
Crape Myrtle	3 Trk, 10' Ht, 5' Spd	4	EA	\$2,058.26	\$8,233.04

Total: \$22,969.82



THE DAVEY TREE EXPERT COMPANY
 4563 Sunbeam Road
 Jacksonville, Florida 32257

May 31, 2019

Re: COJ District 8 Plantings Continue

The Davey Tree Expert Company proposes to furnish all necessary labor, materials, equipment, transportation, taxes and insurance as per specification.

Description of Services

Moncrief Dinsmore Rd.

Task	Specs	Quantity	Unit	Unit Price	Total
Sycamore	3' Cal, 12''Ht, 6' Spd	52	EA	\$ 2,087.04	\$108,526.08
Bald Cypress	3'' Cal, 12' Ht, 6' Spd	6	EA	\$ 2,305.00	\$ 6,915.00
Overcup	3 Cal, 12 Ht, 6' Spd	9	EA	\$2,113.77	\$19,023.93
Dura Heat River Birch	3 Trk, 10'Ht, 5' Spd	9	EA	\$1,864.97	\$16,784.73

Total: \$151,248.73

Grand Total: \$256,921.95

Respectfully submitted,

Ron Morgan

M: 904-545-8142

O: 904-768-8733

F: 904-768-2298

Ron.Morgan@davey.com

Authorizing signature _____

YANCEY PARK TREE PLANTING				
https://pg-cloud.com/JacksonvilleFL/				
QTY	TREE VARIETY	DESCRIPTION	UNIT PRICE	TOTAL
5	<u>QUERCUS VIRGINIANA</u> LIVE OAK	3" CAL., 12'HT., 6' SPD., 65GAL./32"B&B	\$2,607.26	\$13,036.30
9	<u>TAXODIUM DISTICHUM</u> BALD CYPRESS	3" CAL., 12'HT., 6' SPD., 65GAL./36"B&B	\$2,305.00	\$20,745.00
13	<u>QUERCUS LYRATA</u> OVERCUP OAK	3" CAL., 12'HT., 6' SPD., 65GAL./32"B&B	\$2,113.77	\$27,479.01
3	<u>WASHINGTONIA ROBUSTA</u> WASHINGTON PALM	12" CAL., 16' CT	\$2,426.32	\$7,278.96
2	<u>JUNIPERUS SILICICOLA</u> SOUTHERN REDCEDAR	3" CAL., 12'HT., 6' SPD., 65GAL./32"B&B	\$2,360.52	\$4,721.04
4	<u>PINUS PALUSTRIS</u> LONGLEAF PINE	3" CAL., 10'HT., 3' SPD., 65GAL./32"B&B	\$2,360.52	\$9,442.08
36				\$82,702.39

PRITCHARD RD. MEDIAN AT OLD KINGS RD.

https://pg-cloud.com/JacksonvilleFL/				
QTY	TREE VARIETY	DESCRIPTION	UNIT PRICE	TOTAL
3	<u>QUERCUS VIRGINIANA</u> LIVE OAK	3" CAL., 12'HT., 6' SPD., 65GAL./32"B&B	\$2,607.26	\$7,821.78
3	<u>TAXODIUM DISTICHUM</u> BALD CYPRESS	3" CAL., 12'HT., 6' SPD., 65GAL./36"B&B	\$2,305.00	\$6,915.00
4	<u>LAGERSTROEMIA INDICA</u> CRAPE MYRTLE	3 TKS., 10'HT., 5' SPD., 45GAL./32"B&B	\$2,058.26	\$8,233.04
10				\$22,969.82

MONCRIEF DINSMORE RD.

https://pg-cloud.com/JacksonvilleFL/				
QTY	TREE VARIETY	DESCRIPTION	UNIT PRICE	TOTAL
52	<u>PLATANUS OCCIDENTALIS</u> SYCAMORE	3" CAL., 12'HT., 6' SPD., 65GAL./32"B&B	\$2,087.04	\$108,526.08
6	<u>TAXODIUM DISTICHUM</u> BALD CYPRESS	3" CAL., 12'HT., 6' SPD., 65GAL./36"B&B	\$2,305.00	\$6,915.00
9	<u>QUERCUS LYRATA</u> OVERCUP OAK	3 TKS., 10'HT., 5' SPD., 45GAL./32"B&B	\$2,113.77	\$19,023.93
9	<u>BETULA NIGRA</u> 'DURA HEAT' RIVER BIRCH	3 TKS., 10'HT., 5' SPD., 25GAL./24"B&B	\$1,864.97	\$16,784.73
76				\$151,249.74

GRAND TOTAL: \$256,921.95