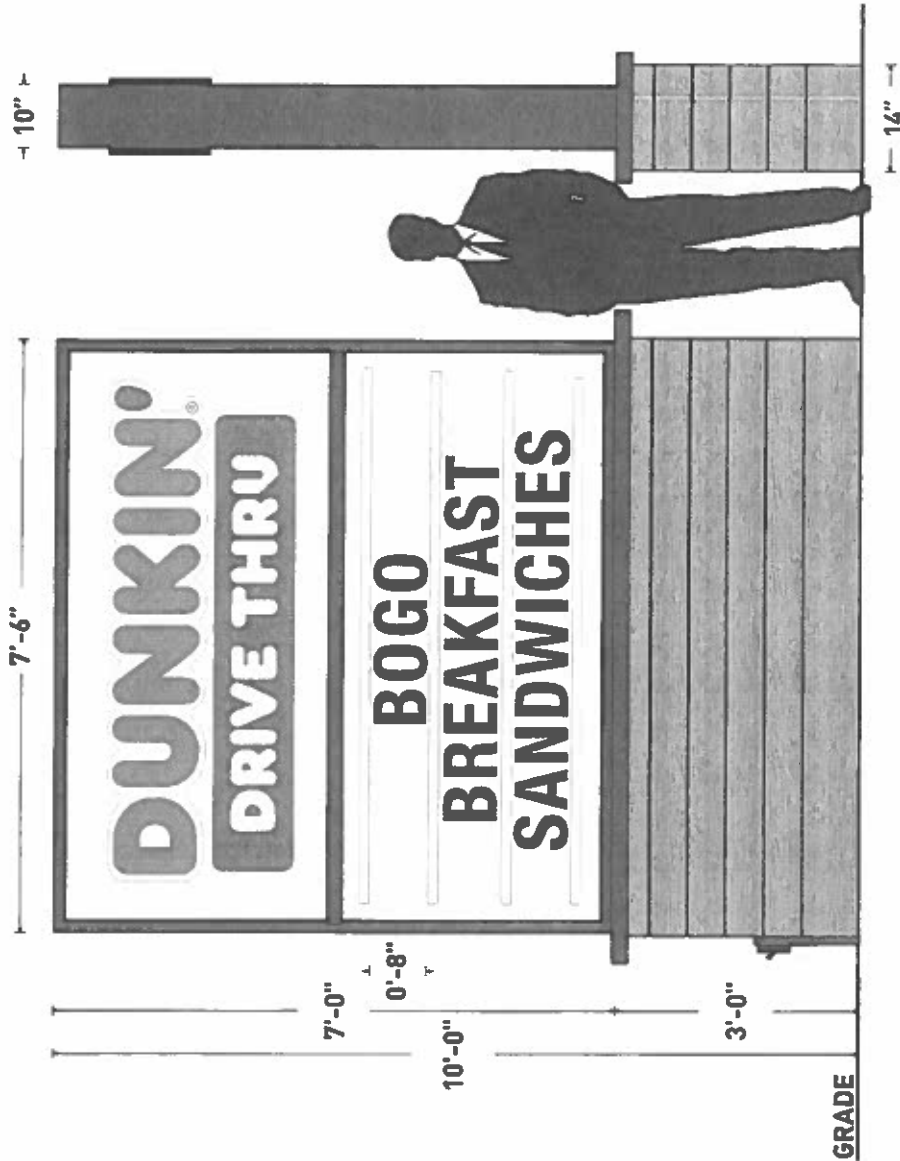


Dunkin Donuts - Site Map - 10951 Old St Augustine Rd, Jax



Base Specifications:

- aluminum angle & square tube construction
- aluminum square tube drip edge to be painted PMS 7540C Gray
- faux wood paneling to be applied to aluminum angle and sheeling with mechanical fasteners and contractor grade adhesive

Cabinet Specifications:

- aluminum extrusion and aluminum angle construction
- cabinet painted to match PMS 7540C Gray
- 1/2" face retainer painted PMS 7540 Gray
- interior finish to be reflective white
- top faces to be embossed polycarb with 2nd surface paint
- "dunkin" 1/2" embossed / "dine thru" flat
- JM 3630-3123 orange translucent vinyl
- JM 3630-1379 magenta translucent vinyl
- face background opaque at night
- resinboard tracked for 3 lines of 8" copy

TAYLOR
Sign & Design, Inc.
 COMMERCIAL SIGN TECHNOLOGIES
Since Certified # 857166917
 www.taylor-sign.com
 4162 St. Augustine Rd - Jacksonville, FL 32207
 Phone # 904.376.4662 • Fax # 904.376.3777

Dunkin Donuts
 Contact: Andy Patel
 Phone #: 904.923.5129
 Email: andypatel@kwikripoil.com
 Address: 10951 Old St. Augustine Rd,
 Jacksonville, FL

Date: 01.30.2024
 Options: OPT 1
 Zoning: PUD
 Saved as: Dunkin - Old St Aug - monument permitting.PDF

This artwork is protected under copyright law and is the property of Taylor Sign & Design, Inc. and is not to be duplicated, reproduced, or distributed without written permission.
 © 2019 Taylor Sign & Design, Inc.
This sign meets or exceeds 12 mph wind speed requirements per 2007 Florida Building Code.

Please ensure all colors, dimensions, verbiage, layout, etc. are correct before approving rendering. Colors portrayed on proof may not match final product due to the difference between digital and pigmented colors. Once artwork is approved, you will be responsible for 1/2 of the re-make cost should any problems be found after installation.

APPROVED BY _____ **DATE** _____