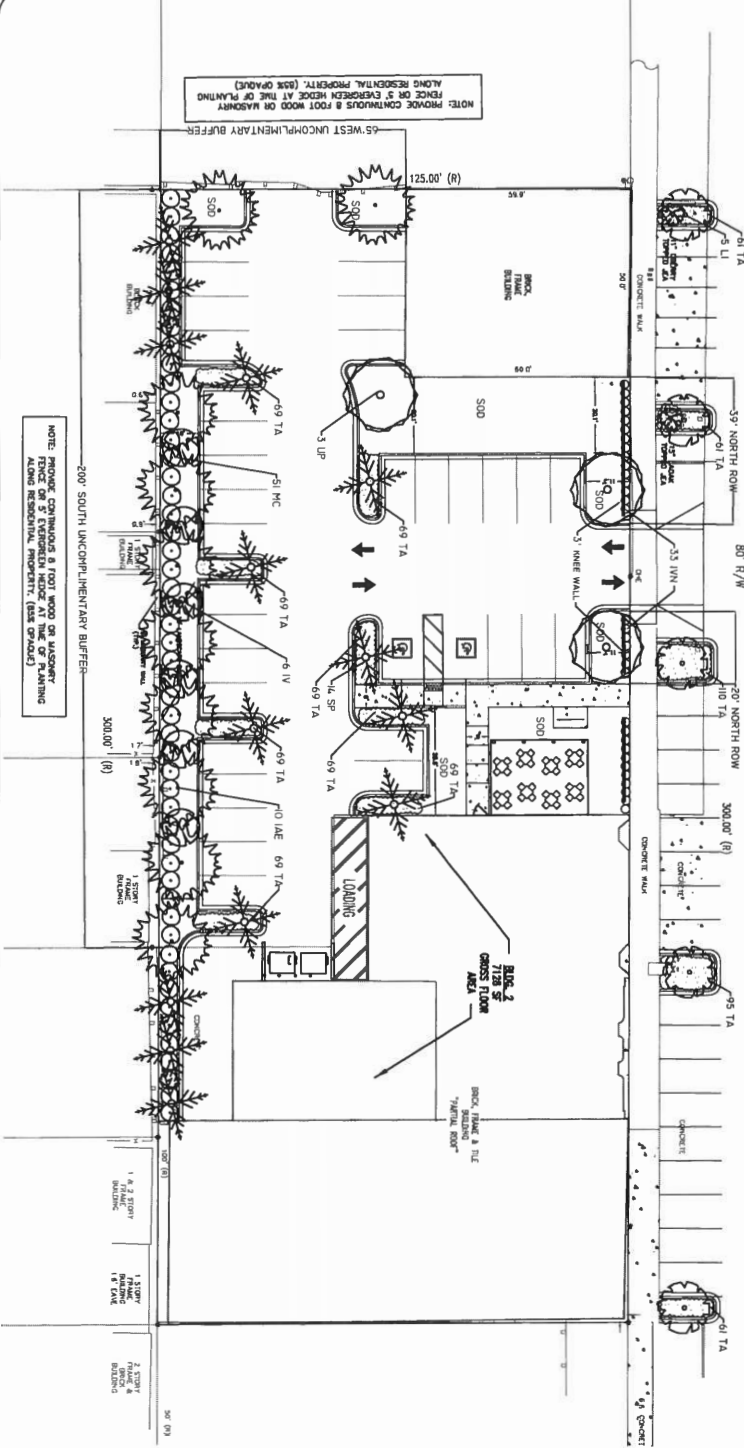


ROOST DEVELOPMENT - PLANT LIST

SYM	DESCRIPTION	SIZE	SPACING	NOTES*	INCHES
3	ULMUS PARVIFOLIA "DRAKE ELM"	10'-12" x 5'-6", 2" CAL., 4" CT. MATCHED	AS SHOWN	F.N., FF., WW, OHE	6
5	LAGERSTROMIA INDICA "NATCHOZ GRAPE MYRTLE"	10'-12" x 4'-6", 4" CAL. STD., 6" CT. MATCHED	AS SHOWN	F.N., FF., WW	12
10	ILEX X ATTENUATA "EAGLESTON HOLLY"	10'-12" x 5'-6", 2" CAL., 4" CT. MATCHED	AS SHOWN	N, F.N., FF., WW	16
6	ILEX VOMITORIA "YALPORN UPRIGHT HOLLY"	7'-8" x 3'-4", 1-1/2" CAL., FIG. MATCHED	AS SHOWN	N, F.N., FF., WW	9
14	SABAL PALMETTO "CARIBBEAN PALM"	8-10" CT. BOODED FULL HEADS. MATCHED	AS SHOWN	N, F.N., FF., WW	16
51	MIRICA CERIFERA "WAX MYRTLE"	48" x 48", FULL MATCHED	48" OC.	N, F.N., FF., WW	
33	ILEX VOMITORIA "SCHILLINGS HOLLY"	18" x 18", FULL MATCHED	36" OC.	N, F.N., FF., WW	
940	TRACHELOSPERMUM ASIATICUM "ASIAN JASMINE"	12" RUNNERS MIN 3 BIBS. FULL MATCHED	12" OC.	F.N., FF., WW	

*PLANT LIST LEGEND:
 NATIVE: F.N. - FLORIDA NATIVE & NEIGHBORHOODS 2004, F.F. - FLORIDA FRIENDLY, W.W. - WATER WISE 2008.
 ONE - 10A OVERHEAD ELECTRIC (ACCEPTABLE PLANT LIST)

OAK STREET



ROOST DEVELOPMENT
 656 PART 12 - LANDSCAPE REQUIREMENTS

PROPERTY	FRONTAGE/ INTERIOR VUA	GREEN AREA PROVIDED SQ'	TREES REQ'D / SHADE REQ'D	SHRUBS REQ'D	SHRUBS PROVIDED
1172 x .25 = 293.75	11,718 SQ'	2720	3/2	33	33
59 x .75 = 44.25	50 LF	699	1/1	15	15
ADJACENT PROPERTY SOUTH-RESIDENTIAL	200 LF	2000	6/4	6/4	
WEST-RESIDENTIAL	63 LF	630	3/2	3/2	
TOTAL	12412	5419	15/8	48	48

ROOST DEVELOPMENT
 656 PART 3 OVERLAY LANDSCAPE REQUIREMENTS

PROPERTY CODE	FRONTAGE/ INTERIOR VUA	GREEN AREA PROVIDED SQ'	TREES REQ'D / SHADE REQ'D	SHRUBS REQ'D	SHRUBS PROVIDED
ADJACENT PROPERTY SOUTH-RESIDENTIAL	654,394.21	200 LF	2000 SQ'	6/4	6/4
ADJACENT PROPERTY WEST-RESIDENTIAL	200 LF	2000 SQ'	6/4	6/4	
TOTAL	854,788.42	400 LF	4000 SQ'	12/8	12/8

COU CODE OF ORDINANCE
 LANDSCAPE REQUIREMENTS

PROPERTY	CODE OF ORDINANCE	REQUIREMENTS (PER 100 LF)
INTERIOR VUA	654.394.21	REQUIREMENTS: (PER 100 LF) CANOPY TREES - 2 @ 4" DIA., LAMINA NATIVE HT - 1-1/2' MIN. CANOPY TREES - 1 @ 4" DIA., LAMINA NATIVE HT - 1-1/2' MIN. 24" LAMINA AT INSTALLATION TO CREATE 35'-42" WIDE WITH 30% OPACITY W/V 1' DIA.
STREET FRONTAGE	654.1213	STREET FRONTAGE BUFFER REQUIREMENTS: 10 SQ' PER EACH LF OF FRONTAGE; 1 TREE PER 50 LF (20% SHADE TREES LAMINA), 23% SHRUB (50% MUST BE NATIVE)
ADJACENT PROPERTY RESIDENTIAL	654.394.21	654 - SUBPART 0

LANDSCAPE PLAN
 05.04.16
 JANET O. WHITMILL, R.L.A., INC.
 LANDSCAPE ARCHITECTURE • PLANNING
 P.O. BOX 5012, JACKSONVILLE, FL 32247 (904) 368-7868
 1:16
 DWG NO. 18418
 DATE 05.04.16

May 4, 2016

ROOST DEVELOPMENT - PLANT LIST

QTY	SYM	DESCRIPTION	SIZE	SPACING	NOTES	INCHES
3	⊖	UMAMUS PARVIFOLIA "BRAKE ELM"	10'-12" x 5'-6" - 2" CAL., 4' CI, MATCHED	AS SHOWN	FVN, FF, WW, OHE	6
5	⊖	LAGERSTRÖMIA INDICA "VALTICZ GRAPE WYRTLE"	10'-12" x 4'-6", 4" CAL STD, 8" CI, MATCHED	AS SHOWN	FVN, FF, WW	12
10	⊖	ILEX X ATTENUATA "EAGLESTON HOLLY"	10'-12" x 5'-6", 2" CAL., 4' CI, MATCHED	AS SHOWN	N, FVN, FF, WW	16
6	⊖	ILEX VOMITORIA "VALPUN UPRIGHT HOLLY"	7'-8" x 5'-6", 1-1/2" CAL., FTG, MATCHED	AS SHOWN	N, FVN, FF, WW	9
14	✕	SABAL PALMETTO "CABBAGE PALM"	8-10' CI, BOOTED FULL HEADS, MATCHED	AS SHOWN	N, FVN, FF, WW	16
51	⊖	MAYRA CENFEREA "WAX MYRTLE"	48" x 48" FULL, MATCHED	48" OC.	N, FVN, FF, WW	
33	⊖	ILEX VOMITORIA "SCHILLINGS HOLLY"	18" x 18" FULL, MATCHED	36" OC.	N, FVN, FF, WW	
940	⊖	TRACHOCARPUM ASYMATUM "ASIAN LASMINE"	12" RUNNERS MIN 3 BBS, FULL, MATCHED	12" OC.	FVN, FF, WW	

SOD PASTPALUM NOTYAIUM ARGENTINE BAHIA - 15A FREE (WEED FREE)

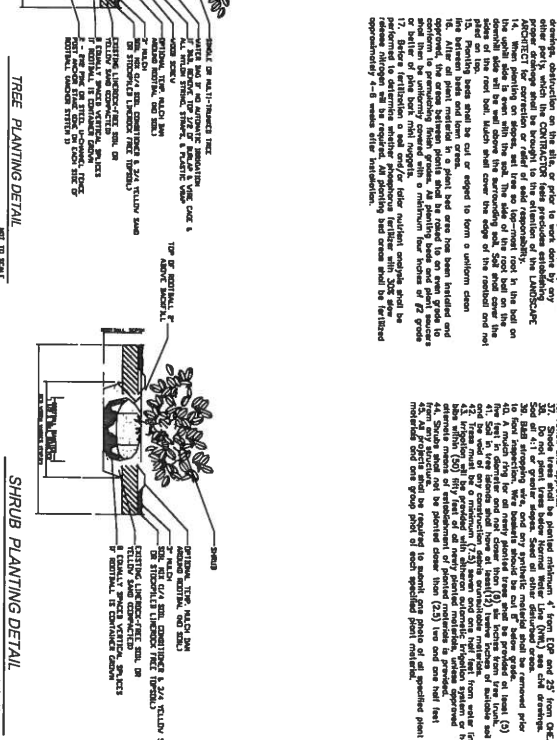
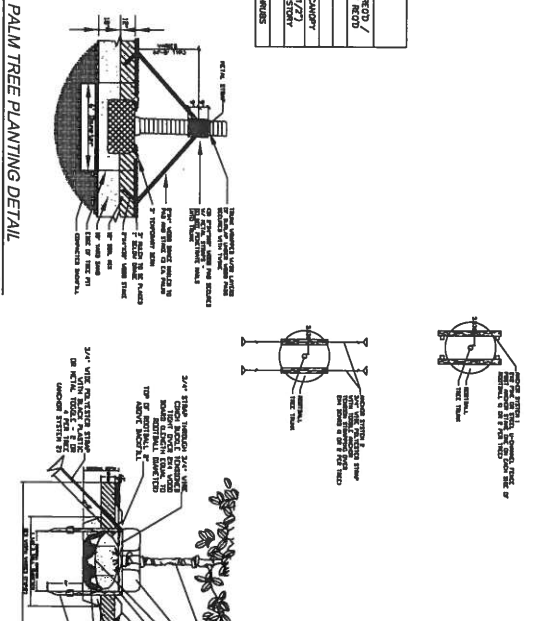
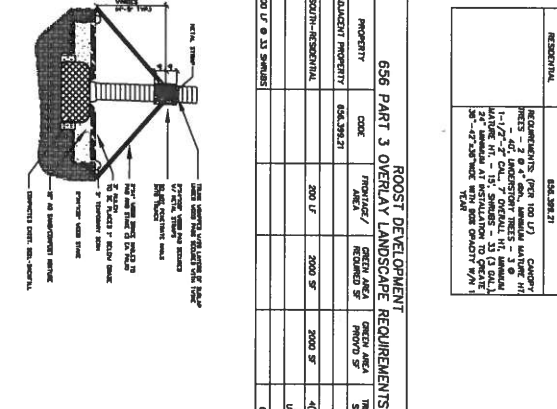
SELECTIONS TO BE MADE BY ARCHITECT. IF ANY DIFFERENCES, COORDINATE WITH GENERAL CONTRACTOR.

SELECTED SOD SPECIES MEETS ALL CURRENT LANDSCAPE AND IRRIGATION REQUIREMENTS. ANY VARIABLE WILL REQUIRE GOVERNMENT APPROVAL.

*PLANT LIST LEGEND: N-NATIVE, FN-FLORIDA NATIVE, FV-FLORIDA NATIVE, FW-WATER WISE, W-WATER WISE 2008, O-ORIGINALLY FROM OREGON, P-PALM TREE, S-SUBSTITUTIONS, SOD-SOD, SOD-SOD, SOD-SOD

PROPERTY	TYPE AREA /	REQUIRED S' /	PROVID S' /	SHADE REQD /	SHADE PROJ /	SUBMITTING	PROVID
ADJACENT PROPERTY	656.39.21	200 LF	2000 S'	400 S'	4/4	3/2	15
SOUTH-RESIDENTIAL	200 LF	2000 S'	400 S'	4/4	3/2	15	15
WEST-RESIDENTIAL	50 LF	500 S'	400 S'	4/4	3/2	15	15
TOTAL		250 LF	2500 S'	400 S'	4/4	3/2	15

PROPERTY	CODE	TYPE AREA /	REQUIRED S' /	PROVID S' /	SHADE REQD /	SHADE PROJ /
ADJACENT PROPERTY	656.39.21	200 LF	2000 S'	400 S'	4/4	3/2
SOUTH-RESIDENTIAL	200 LF	2000 S'	400 S'	4/4	3/2	15
200 LF 0.23 SHADERS						60 SHADERS



REV.	DATE	DESCRIPTION

PLANTING NOTES:

1. All plants shall be installed in accordance with the following notes and specifications.
2. All plants shall be installed in accordance with the following notes and specifications.
3. All plants shall be installed in accordance with the following notes and specifications.
4. All plants shall be installed in accordance with the following notes and specifications.
5. All plants shall be installed in accordance with the following notes and specifications.
6. All plants shall be installed in accordance with the following notes and specifications.
7. All plants shall be installed in accordance with the following notes and specifications.
8. All plants shall be installed in accordance with the following notes and specifications.
9. All plants shall be installed in accordance with the following notes and specifications.
10. All plants shall be installed in accordance with the following notes and specifications.
11. All plants shall be installed in accordance with the following notes and specifications.
12. All plants shall be installed in accordance with the following notes and specifications.
13. All plants shall be installed in accordance with the following notes and specifications.
14. All plants shall be installed in accordance with the following notes and specifications.
15. All plants shall be installed in accordance with the following notes and specifications.
16. All plants shall be installed in accordance with the following notes and specifications.
17. All plants shall be installed in accordance with the following notes and specifications.
18. All plants shall be installed in accordance with the following notes and specifications.
19. All plants shall be installed in accordance with the following notes and specifications.
20. All plants shall be installed in accordance with the following notes and specifications.
21. All plants shall be installed in accordance with the following notes and specifications.
22. All plants shall be installed in accordance with the following notes and specifications.
23. All plants shall be installed in accordance with the following notes and specifications.
24. All plants shall be installed in accordance with the following notes and specifications.
25. All plants shall be installed in accordance with the following notes and specifications.
26. All plants shall be installed in accordance with the following notes and specifications.
27. All plants shall be installed in accordance with the following notes and specifications.
28. All plants shall be installed in accordance with the following notes and specifications.
29. All plants shall be installed in accordance with the following notes and specifications.
30. All plants shall be installed in accordance with the following notes and specifications.
31. All plants shall be installed in accordance with the following notes and specifications.
32. All plants shall be installed in accordance with the following notes and specifications.
33. All plants shall be installed in accordance with the following notes and specifications.
34. All plants shall be installed in accordance with the following notes and specifications.
35. All plants shall be installed in accordance with the following notes and specifications.
36. All plants shall be installed in accordance with the following notes and specifications.
37. All plants shall be installed in accordance with the following notes and specifications.
38. All plants shall be installed in accordance with the following notes and specifications.
39. All plants shall be installed in accordance with the following notes and specifications.
40. All plants shall be installed in accordance with the following notes and specifications.
41. All plants shall be installed in accordance with the following notes and specifications.
42. All plants shall be installed in accordance with the following notes and specifications.
43. All plants shall be installed in accordance with the following notes and specifications.
44. All plants shall be installed in accordance with the following notes and specifications.
45. All plants shall be installed in accordance with the following notes and specifications.
46. All plants shall be installed in accordance with the following notes and specifications.
47. All plants shall be installed in accordance with the following notes and specifications.
48. All plants shall be installed in accordance with the following notes and specifications.
49. All plants shall be installed in accordance with the following notes and specifications.
50. All plants shall be installed in accordance with the following notes and specifications.
51. All plants shall be installed in accordance with the following notes and specifications.
52. All plants shall be installed in accordance with the following notes and specifications.
53. All plants shall be installed in accordance with the following notes and specifications.
54. All plants shall be installed in accordance with the following notes and specifications.
55. All plants shall be installed in accordance with the following notes and specifications.
56. All plants shall be installed in accordance with the following notes and specifications.
57. All plants shall be installed in accordance with the following notes and specifications.
58. All plants shall be installed in accordance with the following notes and specifications.
59. All plants shall be installed in accordance with the following notes and specifications.
60. All plants shall be installed in accordance with the following notes and specifications.
61. All plants shall be installed in accordance with the following notes and specifications.
62. All plants shall be installed in accordance with the following notes and specifications.
63. All plants shall be installed in accordance with the following notes and specifications.
64. All plants shall be installed in accordance with the following notes and specifications.
65. All plants shall be installed in accordance with the following notes and specifications.
66. All plants shall be installed in accordance with the following notes and specifications.
67. All plants shall be installed in accordance with the following notes and specifications.
68. All plants shall be installed in accordance with the following notes and specifications.
69. All plants shall be installed in accordance with the following notes and specifications.
70. All plants shall be installed in accordance with the following notes and specifications.
71. All plants shall be installed in accordance with the following notes and specifications.
72. All plants shall be installed in accordance with the following notes and specifications.
73. All plants shall be installed in accordance with the following notes and specifications.
74. All plants shall be installed in accordance with the following notes and specifications.
75. All plants shall be installed in accordance with the following notes and specifications.
76. All plants shall be installed in accordance with the following notes and specifications.
77. All plants shall be installed in accordance with the following notes and specifications.
78. All plants shall be installed in accordance with the following notes and specifications.
79. All plants shall be installed in accordance with the following notes and specifications.
80. All plants shall be installed in accordance with the following notes and specifications.
81. All plants shall be installed in accordance with the following notes and specifications.
82. All plants shall be installed in accordance with the following notes and specifications.
83. All plants shall be installed in accordance with the following notes and specifications.
84. All plants shall be installed in accordance with the following notes and specifications.
85. All plants shall be installed in accordance with the following notes and specifications.
86. All plants shall be installed in accordance with the following notes and specifications.
87. All plants shall be installed in accordance with the following notes and specifications.
88. All plants shall be installed in accordance with the following notes and specifications.
89. All plants shall be installed in accordance with the following notes and specifications.
90. All plants shall be installed in accordance with the following notes and specifications.
91. All plants shall be installed in accordance with the following notes and specifications.
92. All plants shall be installed in accordance with the following notes and specifications.
93. All plants shall be installed in accordance with the following notes and specifications.
94. All plants shall be installed in accordance with the following notes and specifications.
95. All plants shall be installed in accordance with the following notes and specifications.
96. All plants shall be installed in accordance with the following notes and specifications.
97. All plants shall be installed in accordance with the following notes and specifications.
98. All plants shall be installed in accordance with the following notes and specifications.
99. All plants shall be installed in accordance with the following notes and specifications.
100. All plants shall be installed in accordance with the following notes and specifications.

ROOST
NEW DEVELOPMENT
JACKSONVILLE, FLORIDA

May 4, 2016

LANDSCAPE
DETAILS

05.04.16

JANET O. WHITMILL, R.L.A., INC.
LANDSCAPE ARCHITECTURE • PLANNING
P.O. BOX 5212, JACKSONVILLE, FL 32247 (904) 386-7888

Janet O. Whitmill
Landscape Architect
FL 0000788