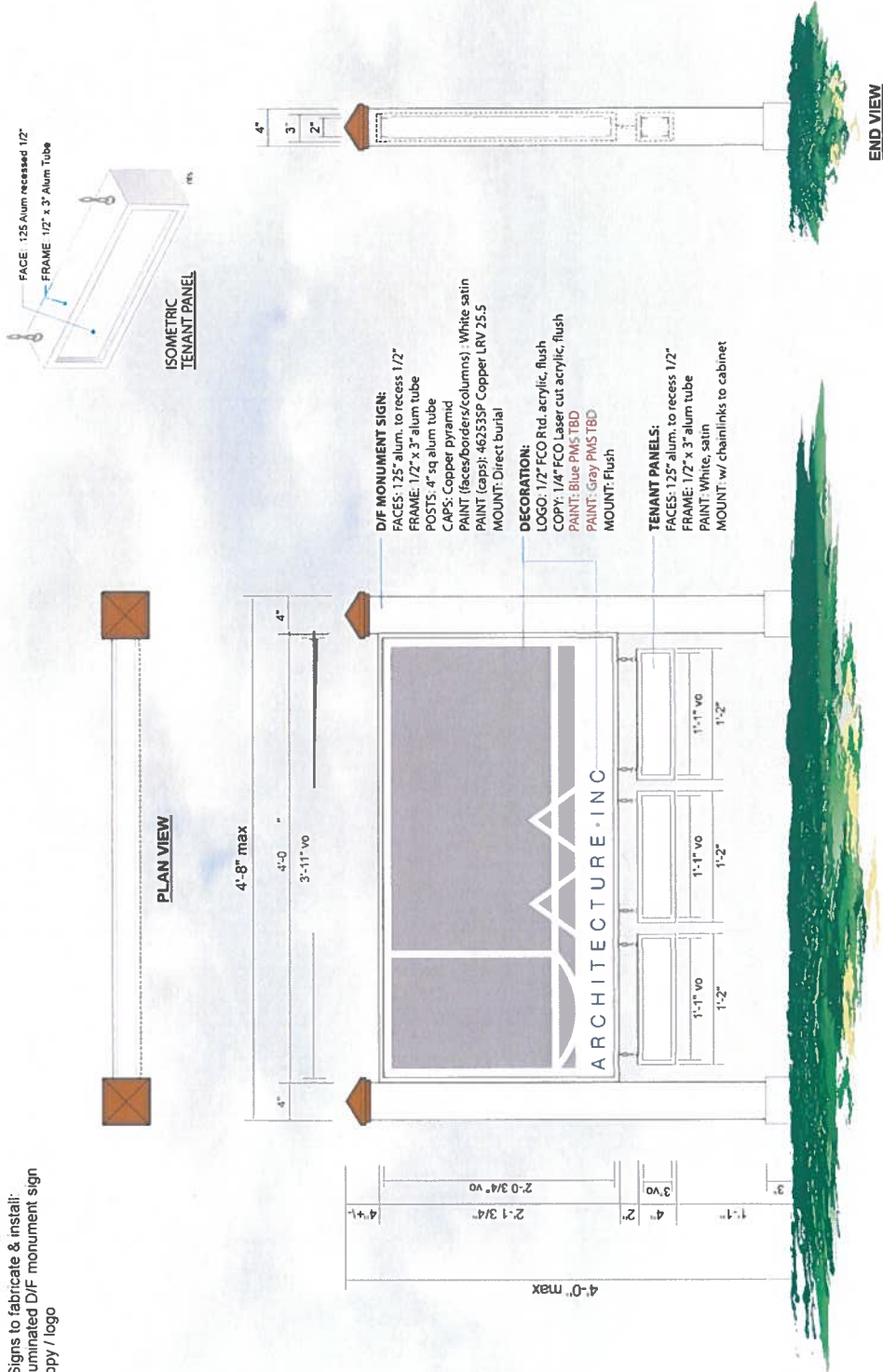


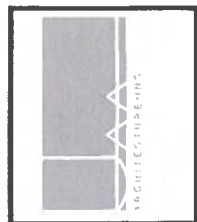
**Scope of Work: A OPTION 1**

Don Bell Signs to fabricate & install:  
 (1) Non-illuminated D/F monument sign  
 w/ FCO copy / logo



**D/F NON-ILLUM MONUMENT SIGN**  
 20 Sq. Ft. Scale: 1" = 1'-0"

Note: This design pending engineering (if applicable).



DESIGN # **2200599 R3**  
 DATE **9.20.22**  
 DRAWN BY **Julie**  
 Revisions / Date / Initials

**R1-10.07.22-AF**  
 USE PHOTO BUSHING. SHIMMED CAPS TO COVER. ADD COPIES OF SIGN TO PHOTO BUSHING.  
**R2 10.19.22 JR**  
 ADD PHOTO BUSHING. SHIMMED CAPS TO COVER. ADD COPIES OF SIGN TO PHOTO BUSHING.  
**R3 11.15.22 JR**  
 ADD PHOTO BUSHING. SHIMMED CAPS TO COVER. ADD COPIES OF SIGN TO PHOTO BUSHING.  
 APPROVED FRAME MATERIAL: 6063 O-SERIES ALUMINUM

ETL ACCT. #115458  
 U.L. Listed Signage  
 AS C. Listed Signage  
 Lead and Fincoignid in the Sign Manual  
 Ad Wring shall be at least 90° C rated

120 Volt  277 Volt

**SHEET 1**  
 JAA ARCHITECTURE

2063 Oak St  
 Jacksonville  
 Jim Weithrell  
 AS Noted  
 Core/DRAW

Note: DBS to include Photo Cell  
 All penetrations to have bushings  
 PRIMARY ELECTRIC BY OTHERS.

The design is intended for use as a guide only. The manufacturer shall be responsible for the final design and construction of the sign. The manufacturer shall be responsible for the final design and construction of the sign.





