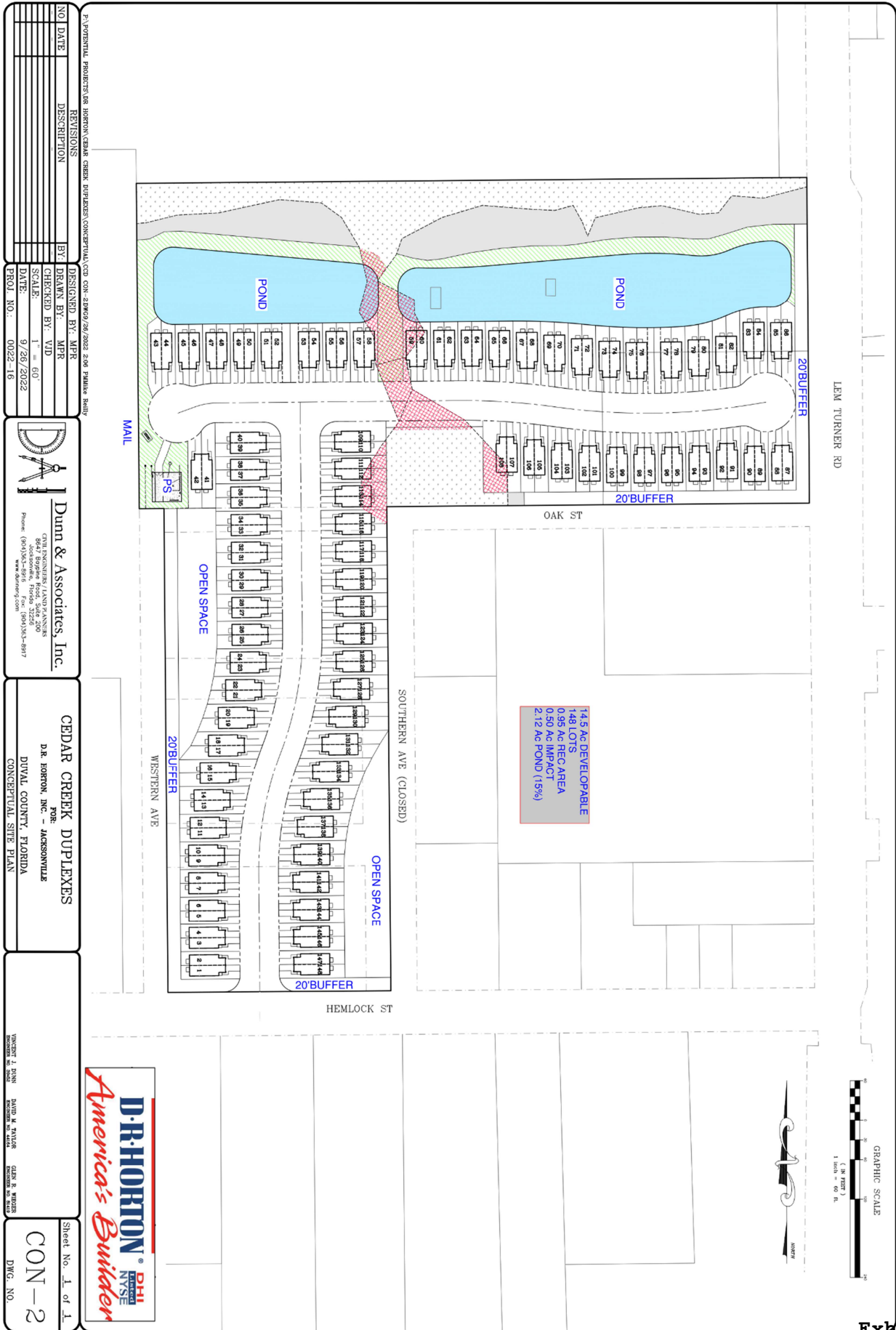


Site Plan



NO	DATE	DESCRIPTION	BY	DESIGNED BY	CHECKED BY	DATE	PROJ. NO.
1				MPR	MPR	9/26/2022	0022-16

Dunn & Associates, Inc.
 CIVIL ENGINEERS / LANDSCAPE ARCHITECTS
 8647 Roggess Road, Suite 200
 Jacksonville, Florida 32217
 Phone: (904) 353-5815 Fax: (904) 353-8917
 www.dunninc.com

CEDAR CREEK DUPLEXES
 FOR JACKSONVILLE
 D.R. HORTON, INC. - JACKSONVILLE
 DIVISION, COUNTY, FLORIDA
 CONCEPTUAL SITE PLAN

D.R. HORTON
 America's Builders
 DHI
 PUBLICLY TRADED
 NYSE

THOMAS J. DUNN
 DAVID M. TAYLOR
 GLEN R. ANDERS

Sheet No. 1 of 1
CON-2
 DWG. NO.