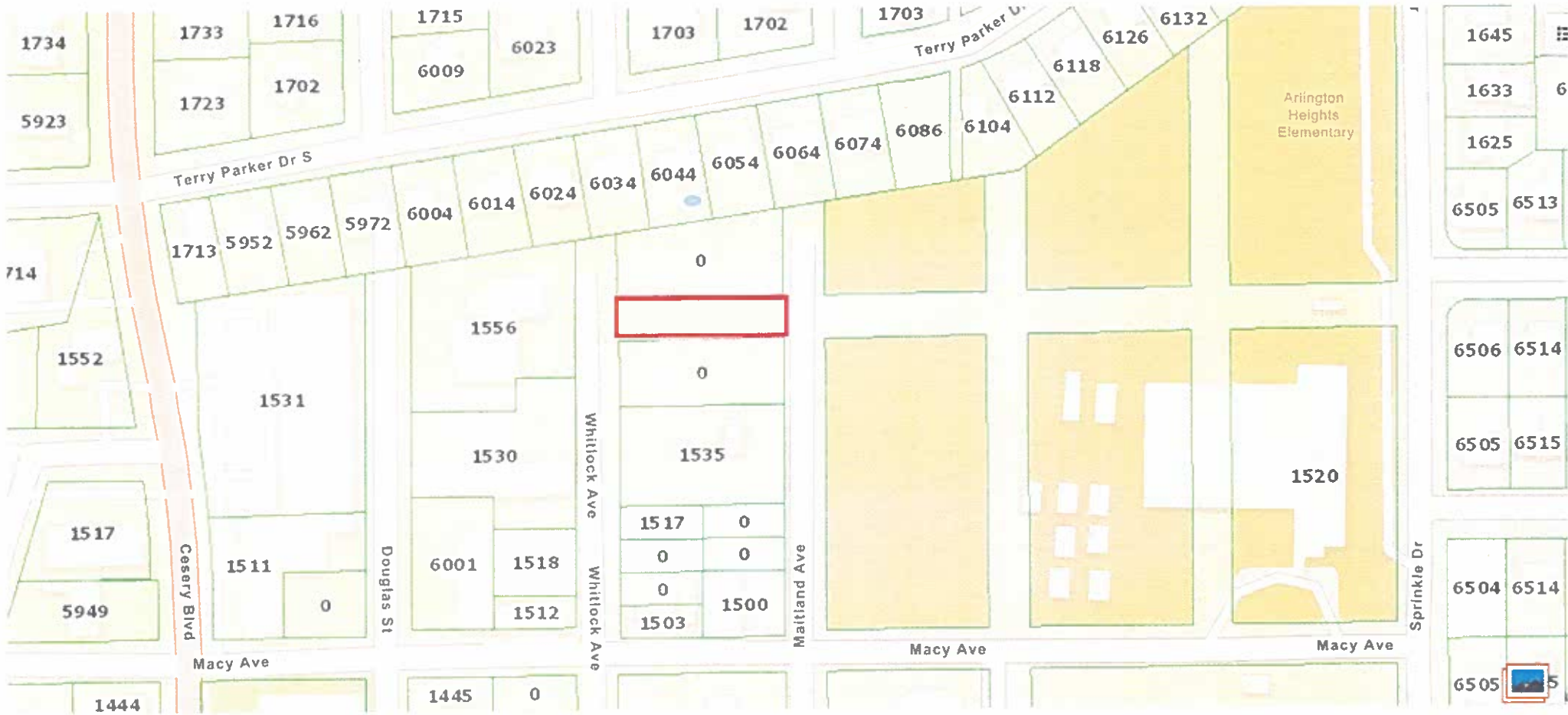
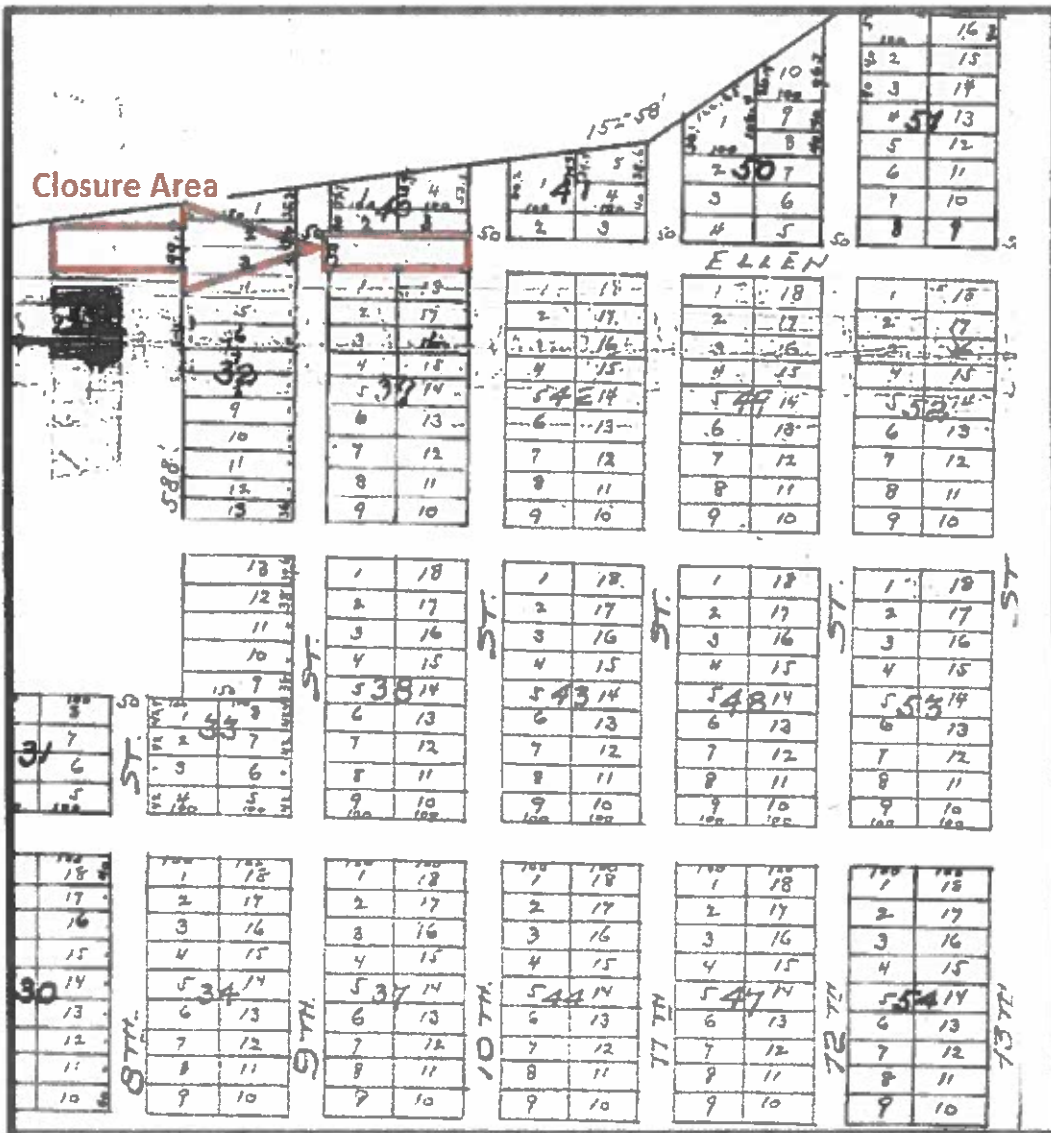


Street Name View Ellen Avenue Closure



Satellite Aerial – Aerial landscape view Ellen Avenue Closure





RE# 141446-000 for location purposes only

That portion of Ellen Avenue a 50 foot, right of way, lying between 9th Street and 10th Street and between Blocks 40 and 39, as shown on the Plat of Arlington Heights as recorded in Plat Book 4, Page 19, of the Current Public Records, of Duval County, Florida.

APPROVED
 DESCRIPTION AGREES
 WITH MAP
 CITY ENGINEERS OFFICE
 TOPO/SURVEY BRANCH

By *JRW* Date *8-21-21*