



LOCATION MAP

*The City of Jacksonville provides no warranties, expressed or implied, concerning the accuracy, completeness or reliability or suitability of this location map for any particular use.



RE#: 086510-0000 The West 8 feet of Lot 3, Block 2, of Owens Addition to Jacksonville and all of Lot 4 Block 2, except the part Recorded in Deed Book 1666, Page 371, as shown in Plat Book 3, page 4, of the Current Public Records of Duval County, Florida.

EXHIBIT "A"



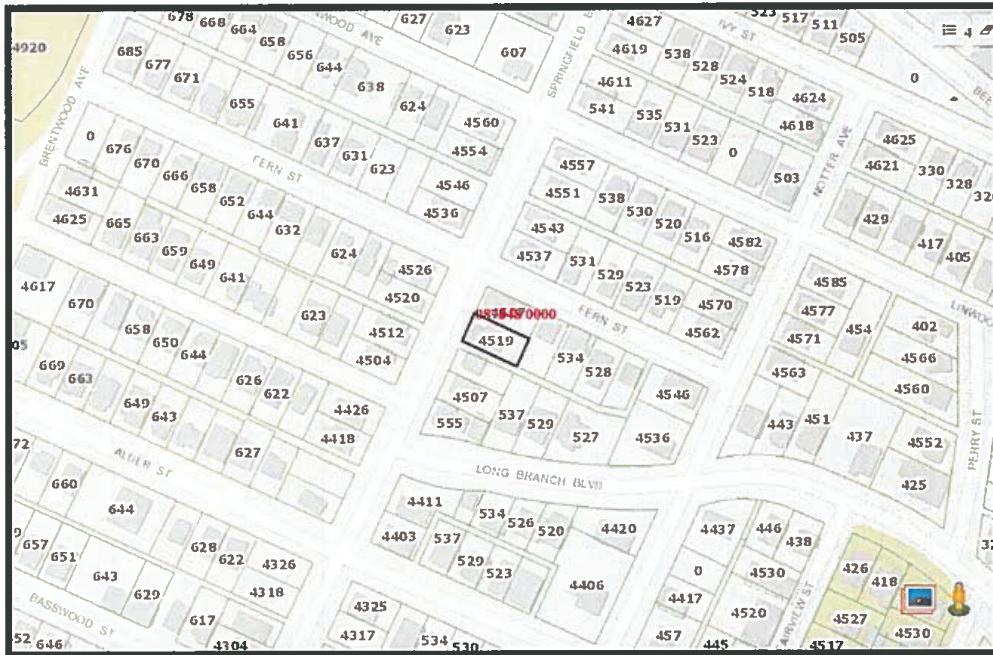
LOCATION MAP

*The City of Jacksonville provides no warranties, expressed or implied, concerning the accuracy, completeness or reliability or suitability of this location map for any particular use.

APPROVED
 DESCRIPTION AGREES
 WITH MAP
 CITY ENGINEERS OFFICE
 TOPO/SURVEY BRANCH
 by scc Date 2/3/22

RE: # 044810-0000 The West 36 feet of Lots 3, and 4, Block 34, New Springfield, Plat Book 2, Page 69, of the Current Public Records of Duval County, Florida.

EXHIBIT "A"



LOCATION MAP

*The City of Jacksonville provides no warranties, expressed or implied, concerning the accuracy, completeness or reliability or suitability of this location map for any particular use.

RE#: 087848-0000 Lot 8, Block 16, Replat of Brentwood, Plat Book 5, Page 38, of the Current Public Records of Duval County, Florida.

EXHIBIT "A"

APPROVED
 DESCRIPTION AGREES
 WITH MAP
 CITY ENGINEERS OFFICE
 TOPO/SURVEY BRANCH
 By sc Date 2/25/22