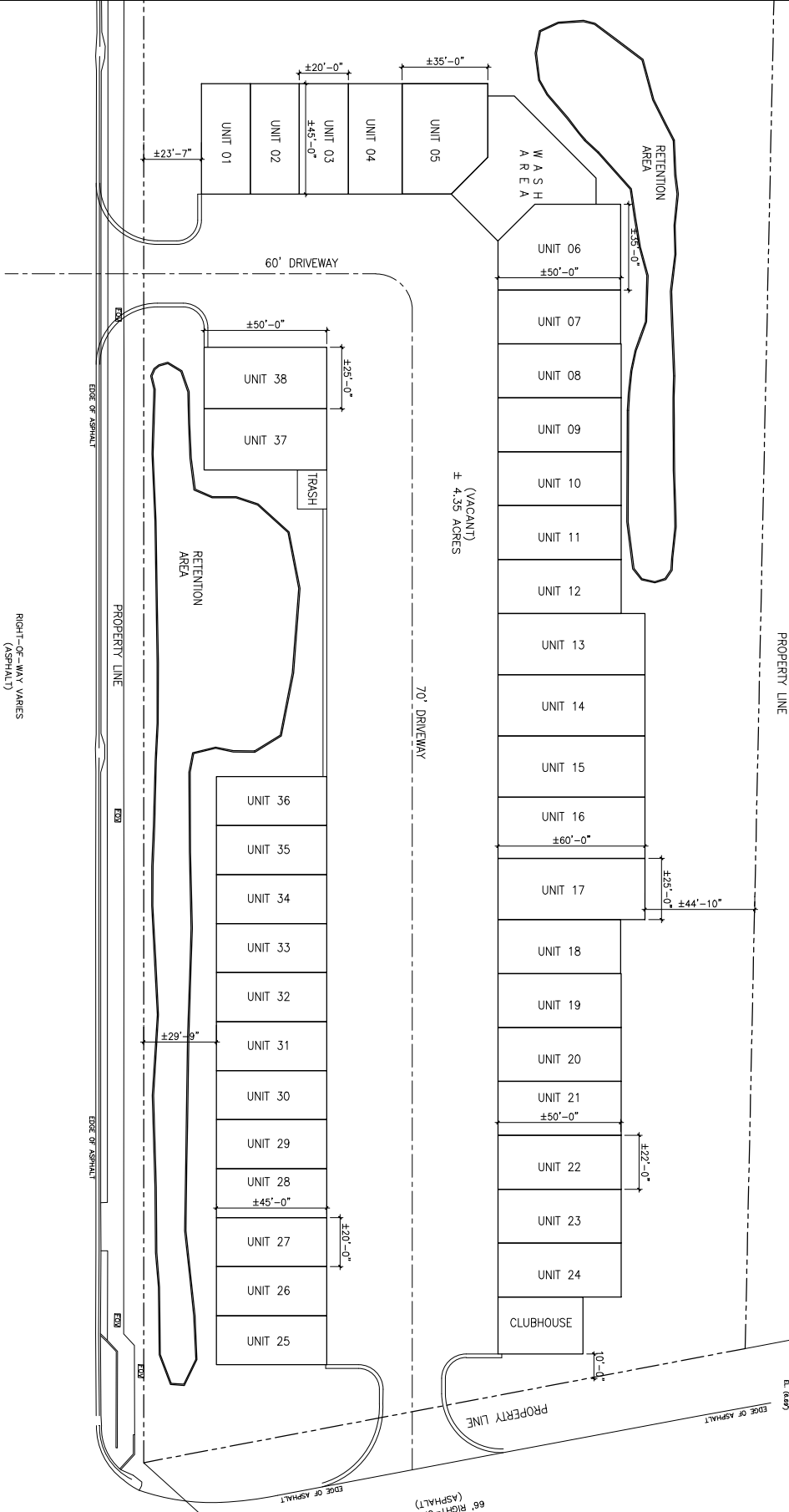


O.R.B. 18746 PG. 1751

TOTAL PROJECT AREA = ±4.35 acres  
 APPROX. NUMBER OF STORAGE UNITS = 38  
 APPROX. SQ. FT. OF UNITS = ± 900 sf to ± 1,700 sf  
 \*NOTE: UNIT DIMENSIONS NOTED BELOW ARE APPROXIMATE AND SUBJECT TO CHANGE.



**SITE PLAN**



SCALE: 1"=30'-0"

RIGHT-OF-WAY VARIES (ASPHALT)

CRAIG A. SOMMERS, STATE OF FLORIDA, REGISTERED ARCHITECT, LICENSE NO. AA000460  
 THIS PLAN HAS BEEN ELECTRONICALLY SIGNED AND SEALED BY CRAIG A. SOMMERS, AIA  
 ON 01/15/2021 USING A DIGITAL SIGNATURE. PRINTED COPIES OF THIS DOCUMENT ARE NOT  
 CONSIDERED VALID UNLESS THEY ARE SIGNED AND SEALED BY THE ORIGINAL AUTHOR.

**A-1**

DATE:	12-15-21
CHECKED BY:	CAS
DRAWN BY:	CAS

SHEET TITLE: SITE PLAN		
NO.	DATE	REVISION

NEW BUILDINGS  
**MAYPORT BOAT STORAGE**

MAYPORT ROAD AND PIONEER DRIVE  
 JACKSONVILLE, FLORIDA



**DOHERTY SOMMERS ARCHITECTS ENGINEERS, INC.**

370 15th Ave S, Units A & B  
 Jacksonville Beach, FL 32250  
 904.249.0988 p  
 904.241.0691 f

www.dsae.net  
 Florida Certificate of Auth No: 00000  
 Florida License No.: AA2600952  
 Georgia License No.: FEF004148

CRAIG A. SOMMERS, AIA  
 GA ARCHITECT - RA008732

December 15, 2021

Revised Exhibit 4

Page 1 of 1