

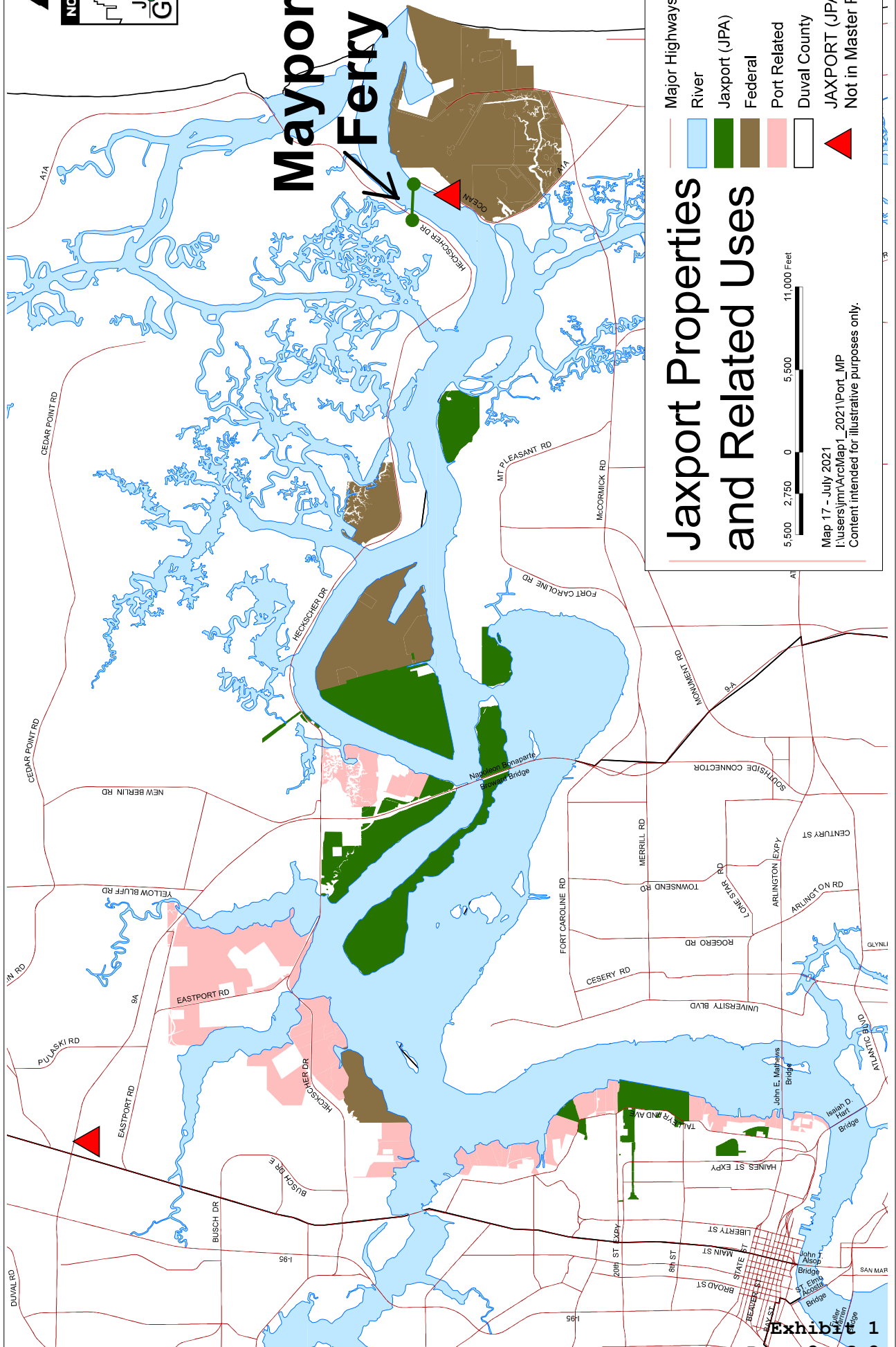
Ordinance 2022-104

**2021B Series Text Amendment - City of Jacksonville 2030 Comprehensive Plan
Conservation/Coastal Management Element**

JaxPort Properties and Related Uses Map 17



Mayport Ferry



- Major Highways
- River
- Jaxport (JPA)
- Federal
- Port Related
- Duval County
- JAXPORT (JPA)
- Not in Master Plan

Jaxport Properties and Related Uses



Map 17 - July 2021
 I:\users\jmr\ArcMap1_2021\Port_MP
 Content intended for illustrative purposes only.