

# City of Jacksonville and Duval County Projects

FDOT District Two

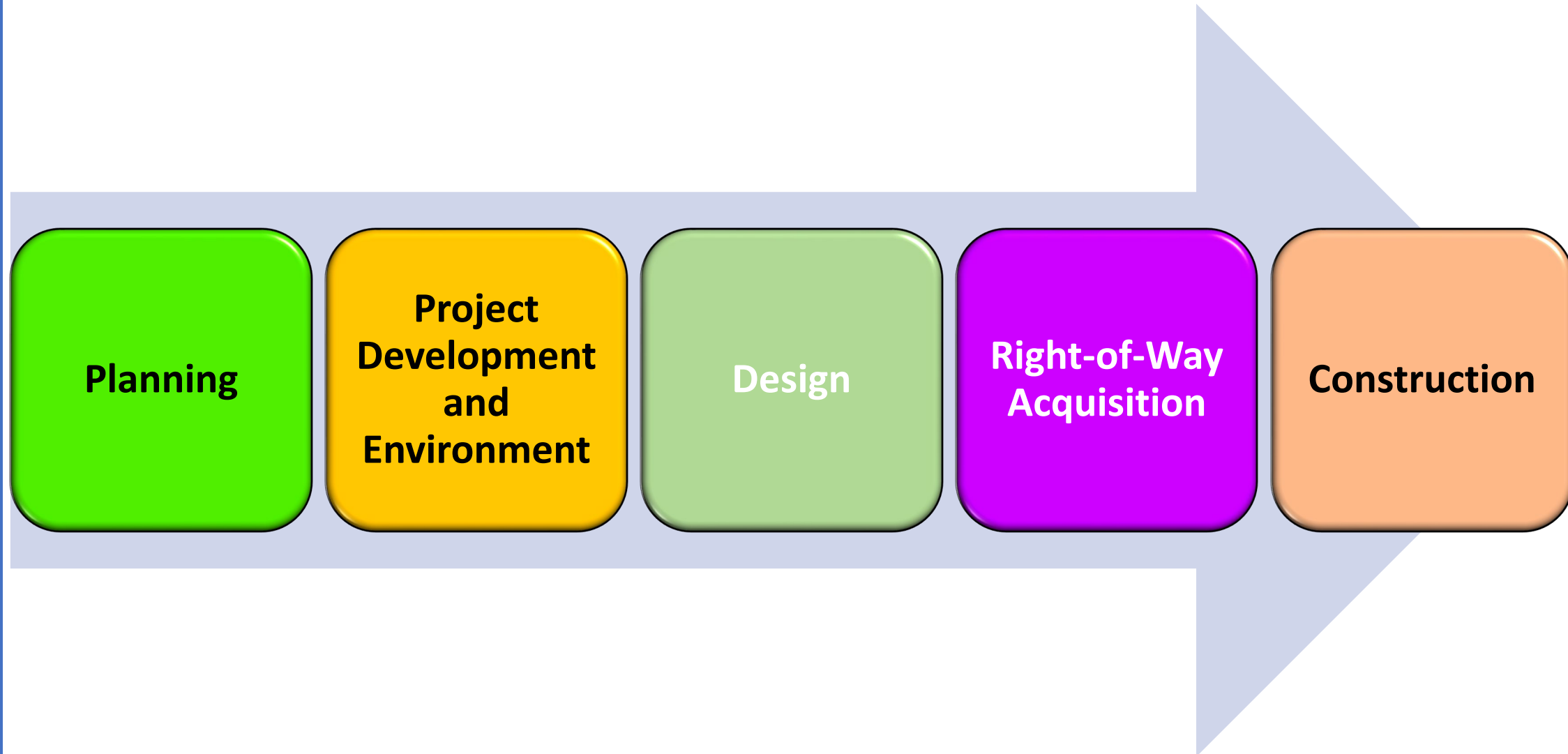


# Florida Department of Transportation Mission Statement

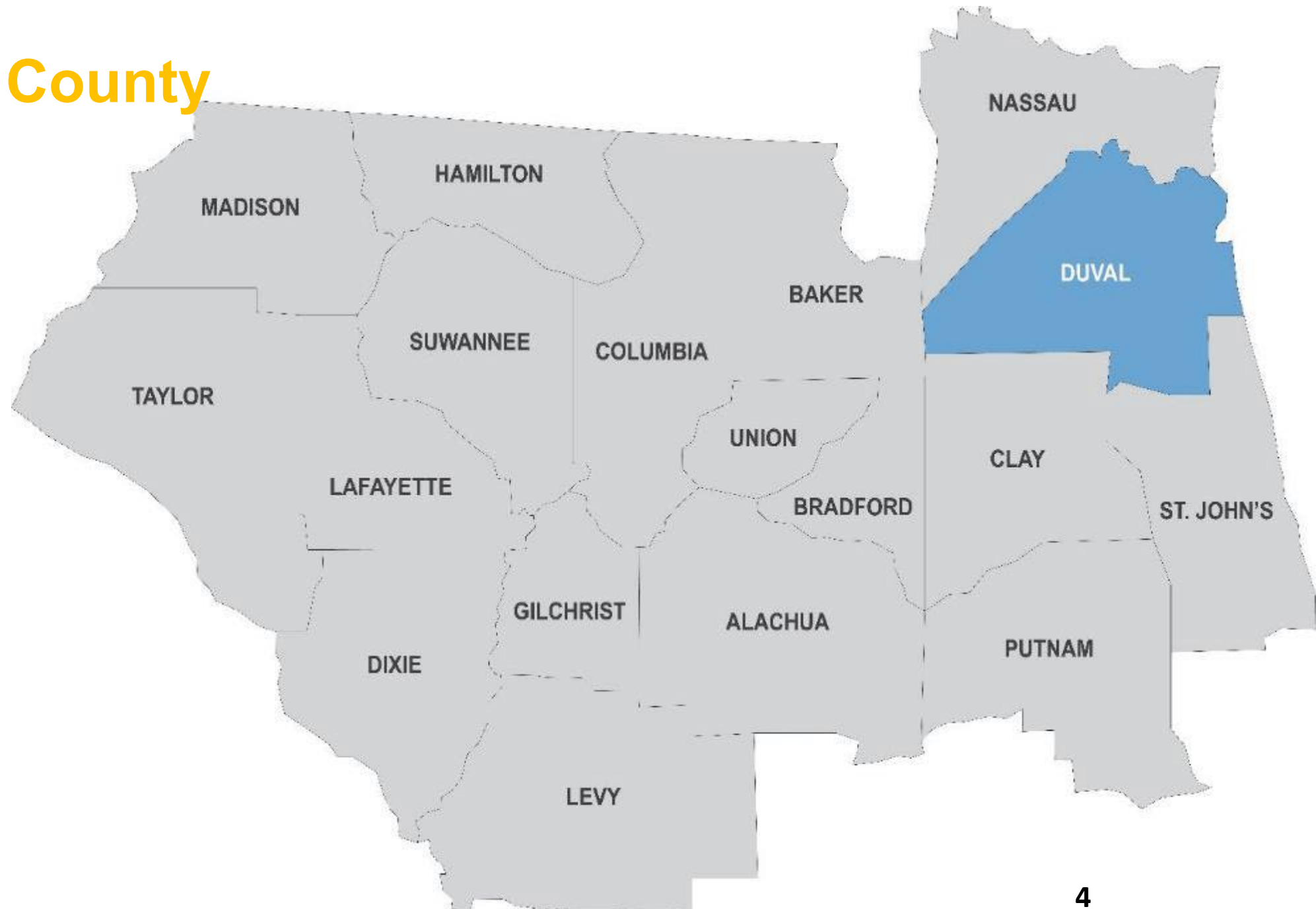
**“The Department will provide a safe transportation system that ensures the mobility of people and goods, enhances economic prosperity and preserves the quality of our environment and communities.”**



# Project Phases



# Duval County



# 5-year Summary of Funding Source

## Duval

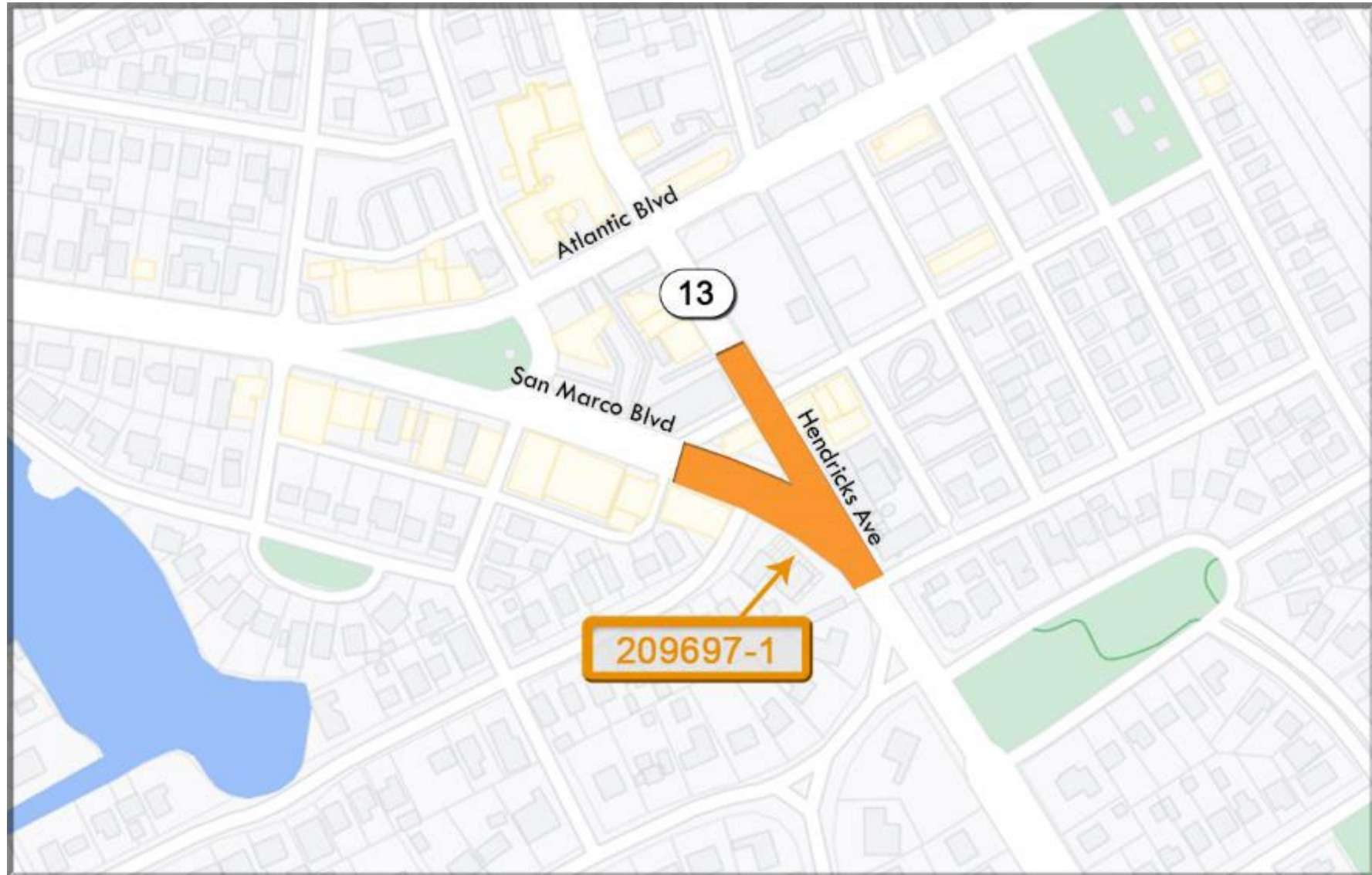
Funding Source	2023/24	2024/25	2025/26	2026/27	2027/28	Total
Federal	277,732,470	190,041,987	117,444,705	165,935,446	56,383,744	807,538,352
Federal Earmark	1,000,000	1,000,000	1,000,000	1,000,000	1,000,000	5,000,000
Local	49,150,741	32,185,210	45,312,421	26,830,115	24,933,711	178,412,198
Other	5,535,015	0	0	0	0	5,535,015
R/W and Bridge Bonds	4,319,245	0	0	0	0	4,319,245
State	0	0	6,350,772	0	0	6,350,772
State 100%	240,858,315	253,566,039	310,505,780	98,308,372	47,332,302	950,570,808
Toll/Turnpike	1,212,900	1,118,395	1,210,395	1,302,519	1,411,721	6,255,930
Total	579,808,686	477,911,631	481,824,073	293,376,452	131,061,478	1,963,982,320



## SR13 Hendricks Ave (SR13) at San Marco Blvd

FPI: 209697-1, Intersection Improvement

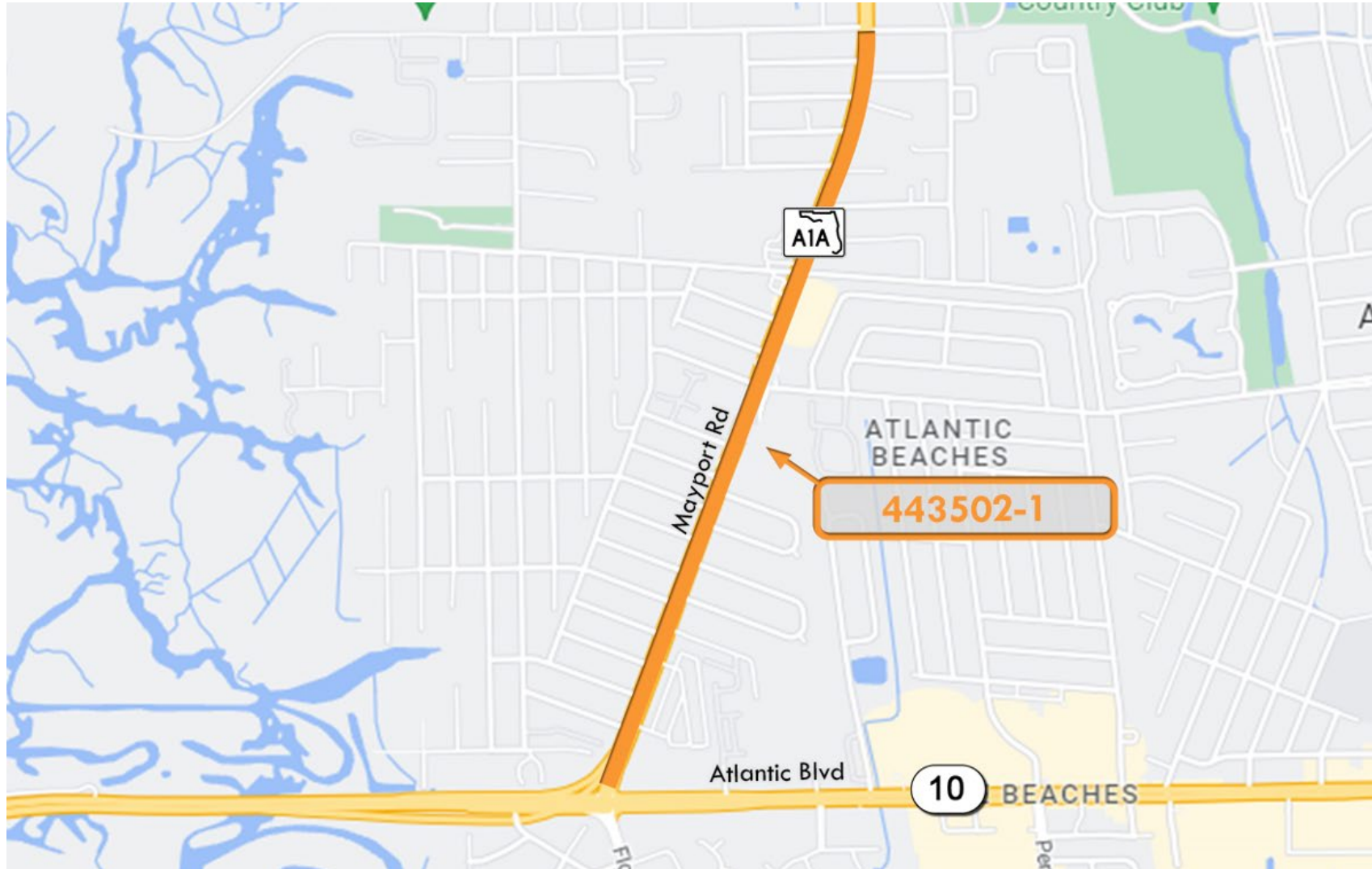
CST in 24'



## SRA1A (MAYPORT ROAD)

FPI: 4435021, BIKE LANE/SIDEWALK

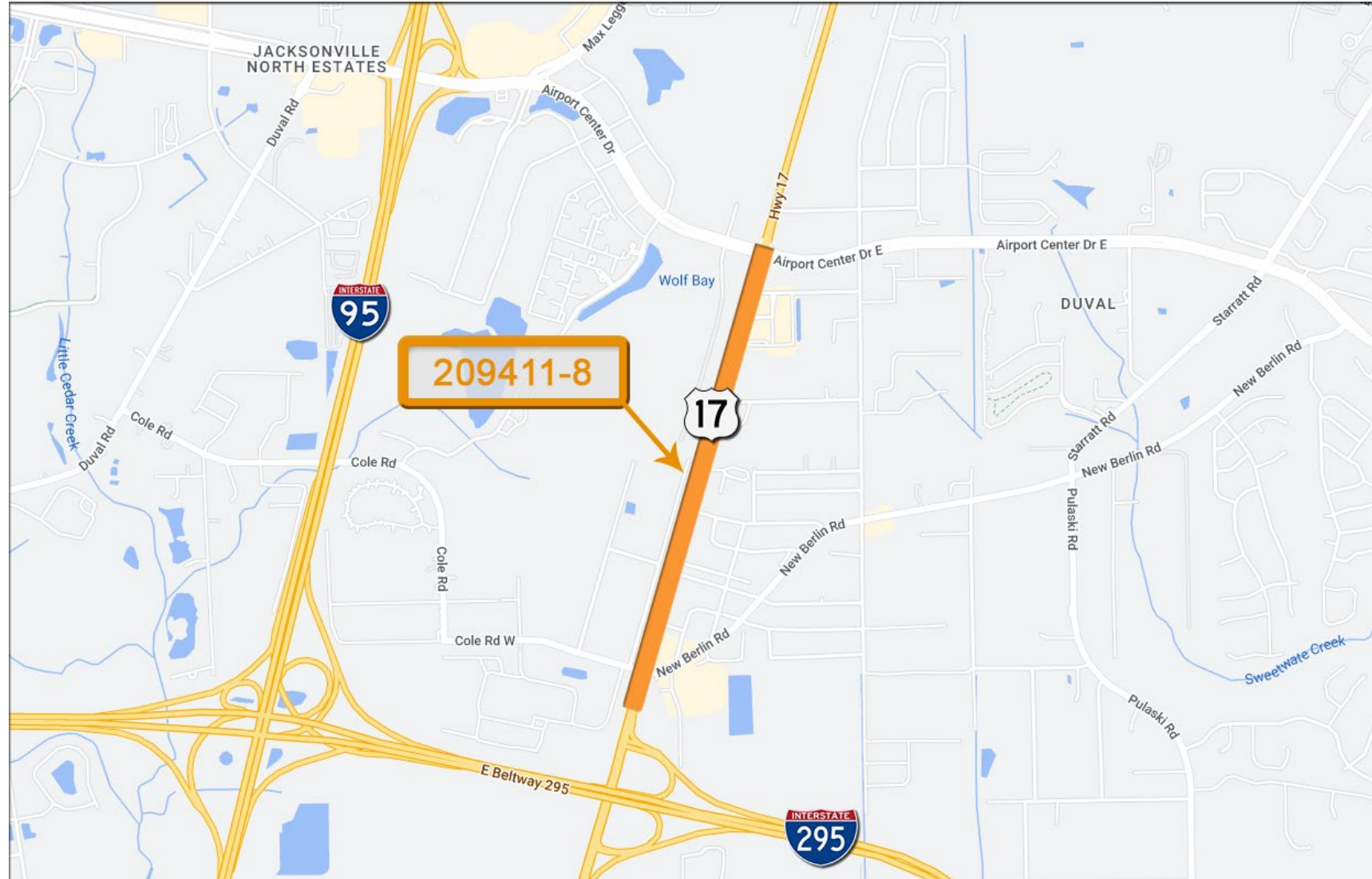
CST in 26'



**SR5(US17) Main St From S. Of New Berlin Rd To Airport Center DR.**

FPI: 209411-8, ADD LANES & RECONSTRUCT

CST in 26'





## I-95 (SR 9) from St Johns C/L to I-295 (SR 9A)

FPI: 424026-5, Add Lanes & Reconstruct

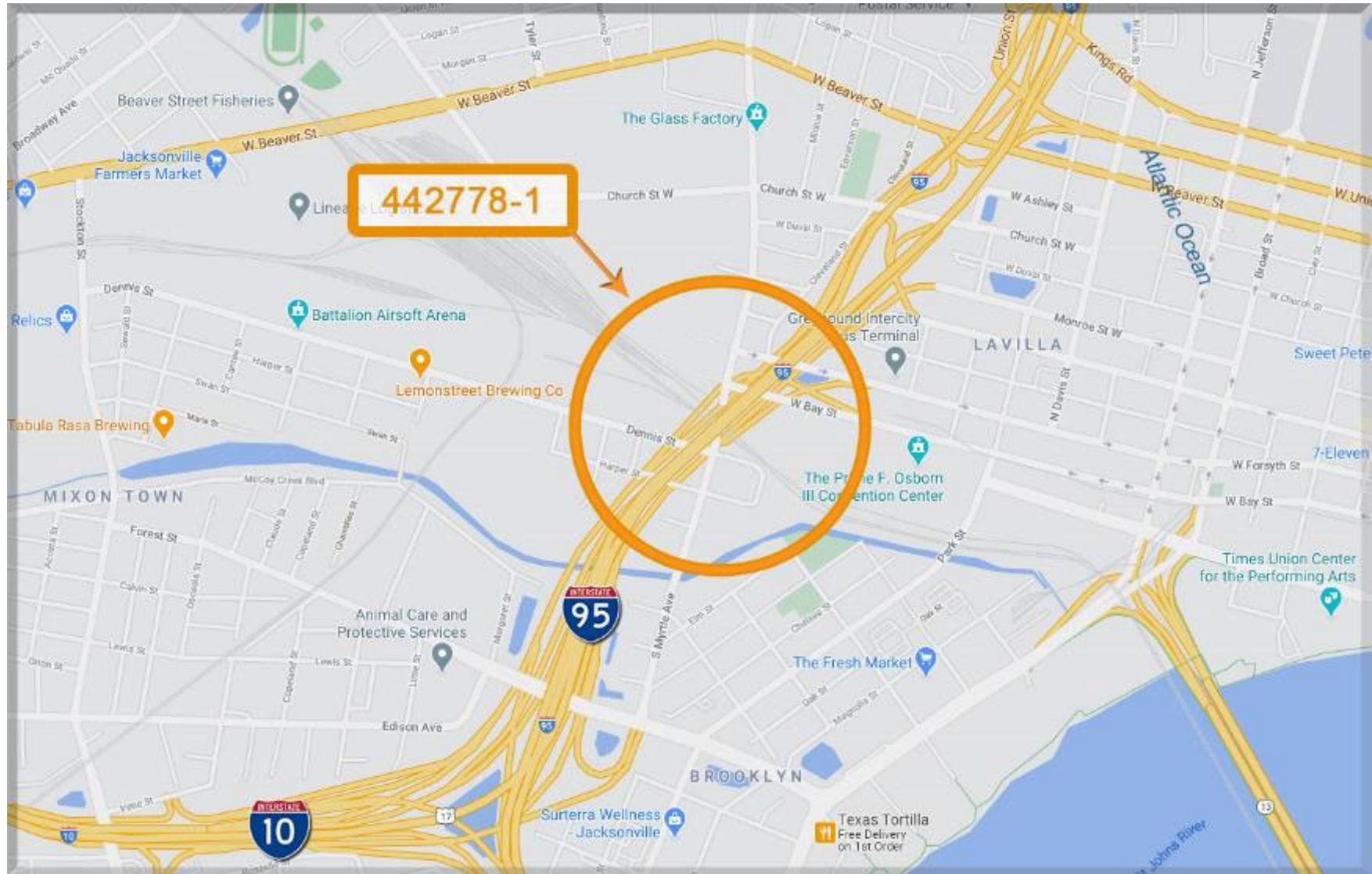
CST in 26'



## I-95 (SR 9) Myrtle Avenue/I-95/I-10 Ramp Bridge No. 720162

FPI: 442778-1, Bridge Repair/Rehabilitation

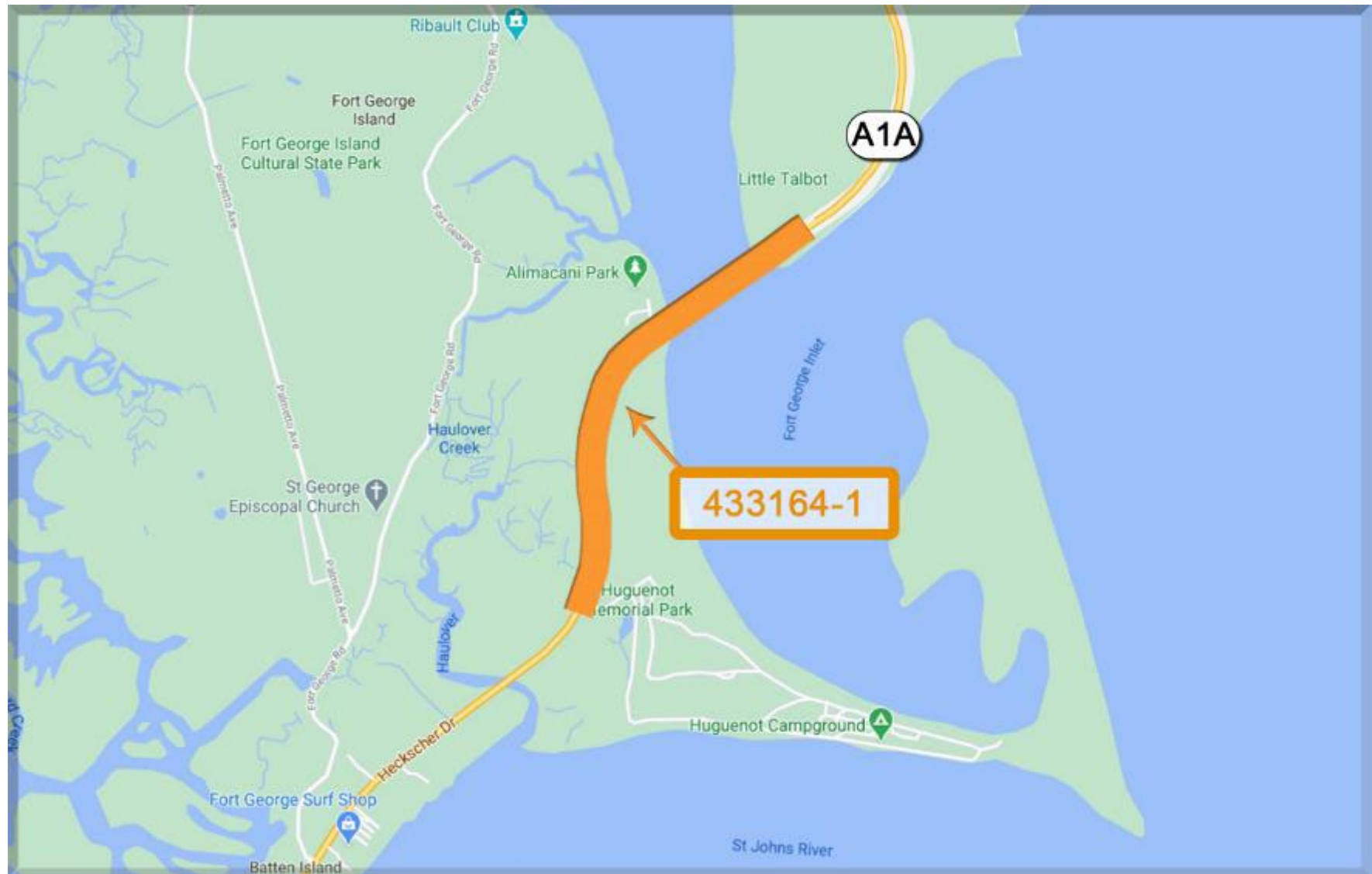
CST in 26'



## Heckscher Dr (SR A1A) from Huguenot Park to George River Bridge

FPI: 433164-1, Sidewalk

CST in 26'

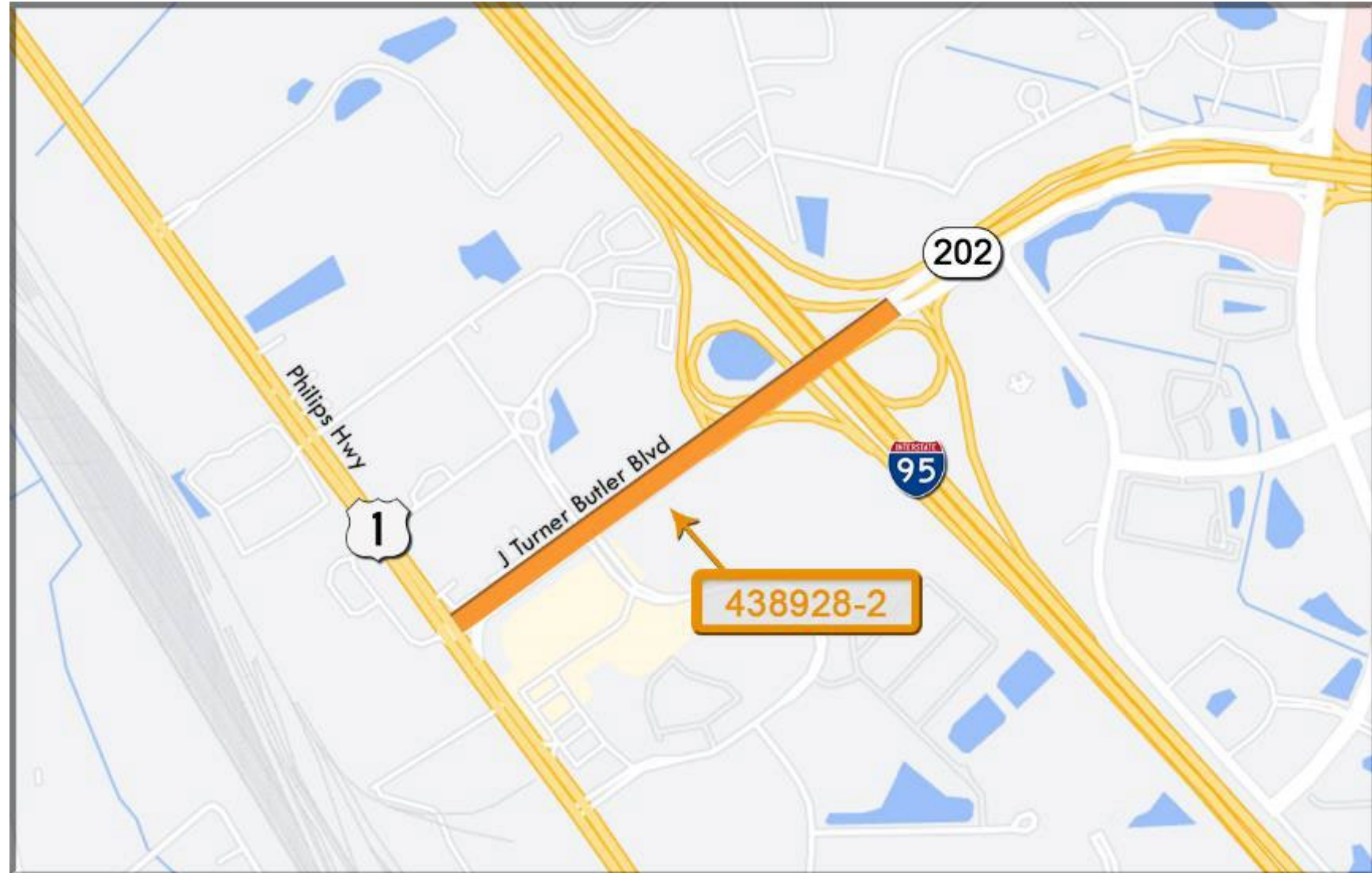




**JT Butler Blvd (SR202) from east of I-95 to US1 and from south of JTB to north of Mustang Rd**

FPI: 438928-2, Add Lanes and Reconstruct

CST in 26'





## SR105(HECKSCHER DR) OVER BROWNS CREEK BRIDGE #720059

FPI: 448825-1, Bridge-Replacement

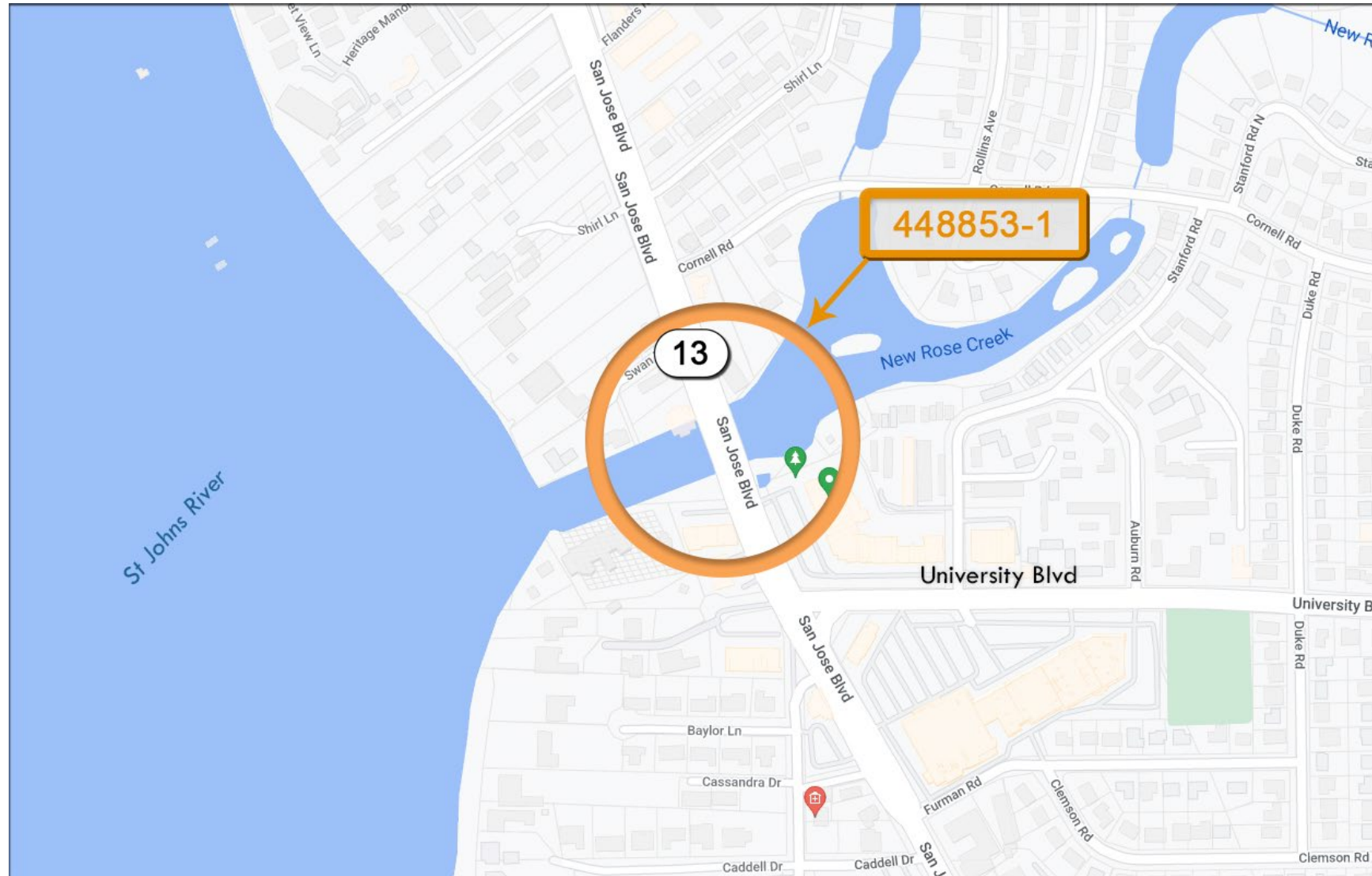
**Construction in 2027**



## **SR13 @ NEW ROSE CREEK BRIDGE #720029**

FPI: 4488531, Bridge-Replacement

**Construction in 2027**



## SR5(US17)(MAIN ST) N FROM TROUT RIVER TO N OF SR104

FPID:209137-6 Resurfacing –

PE in 23' and CST in 25'

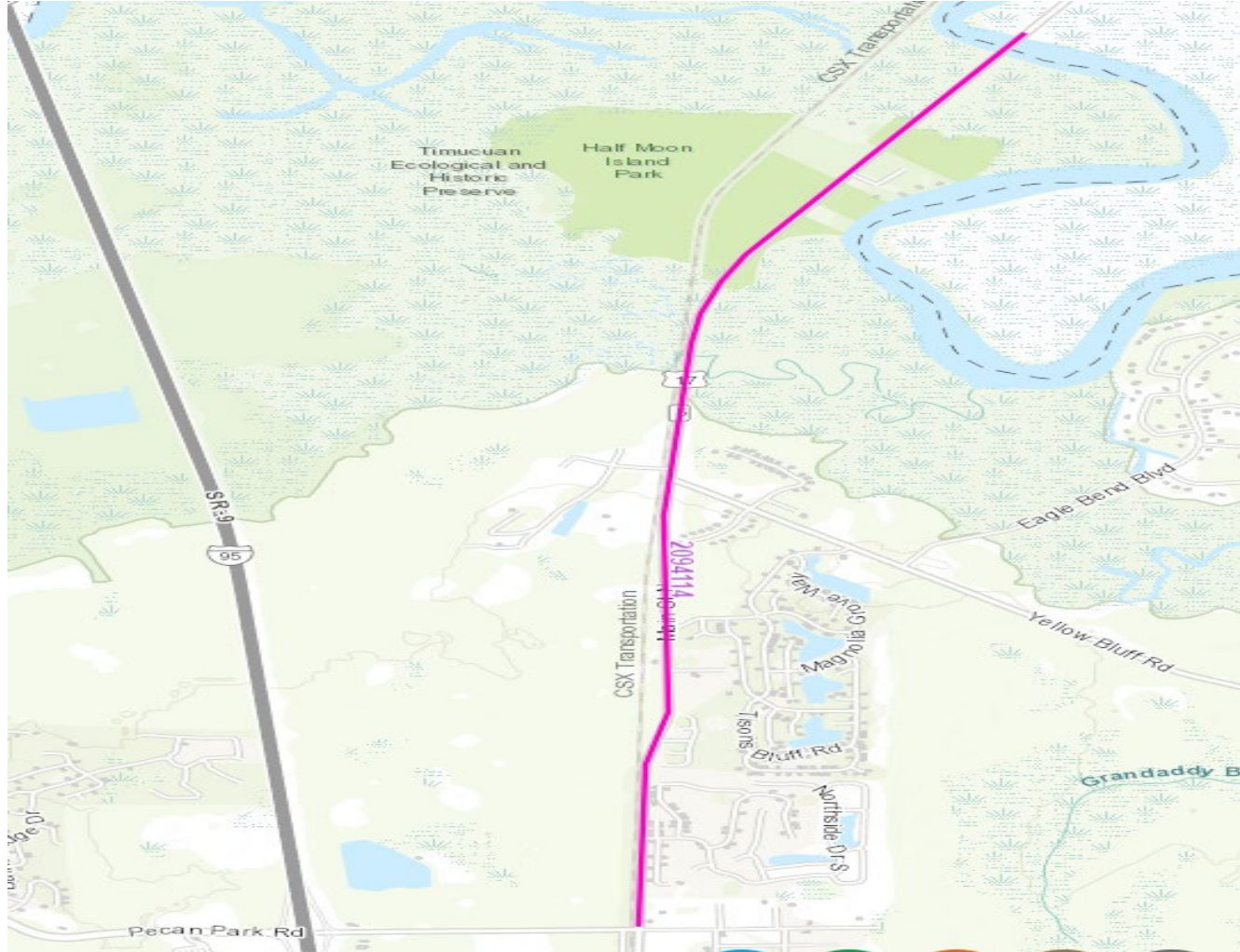




## SRA1A(US105) FROM SHAD CREEK TO LITTLE TALBOT ISLAND

FPID: 209411-4 Resurfacing

CST in 25'

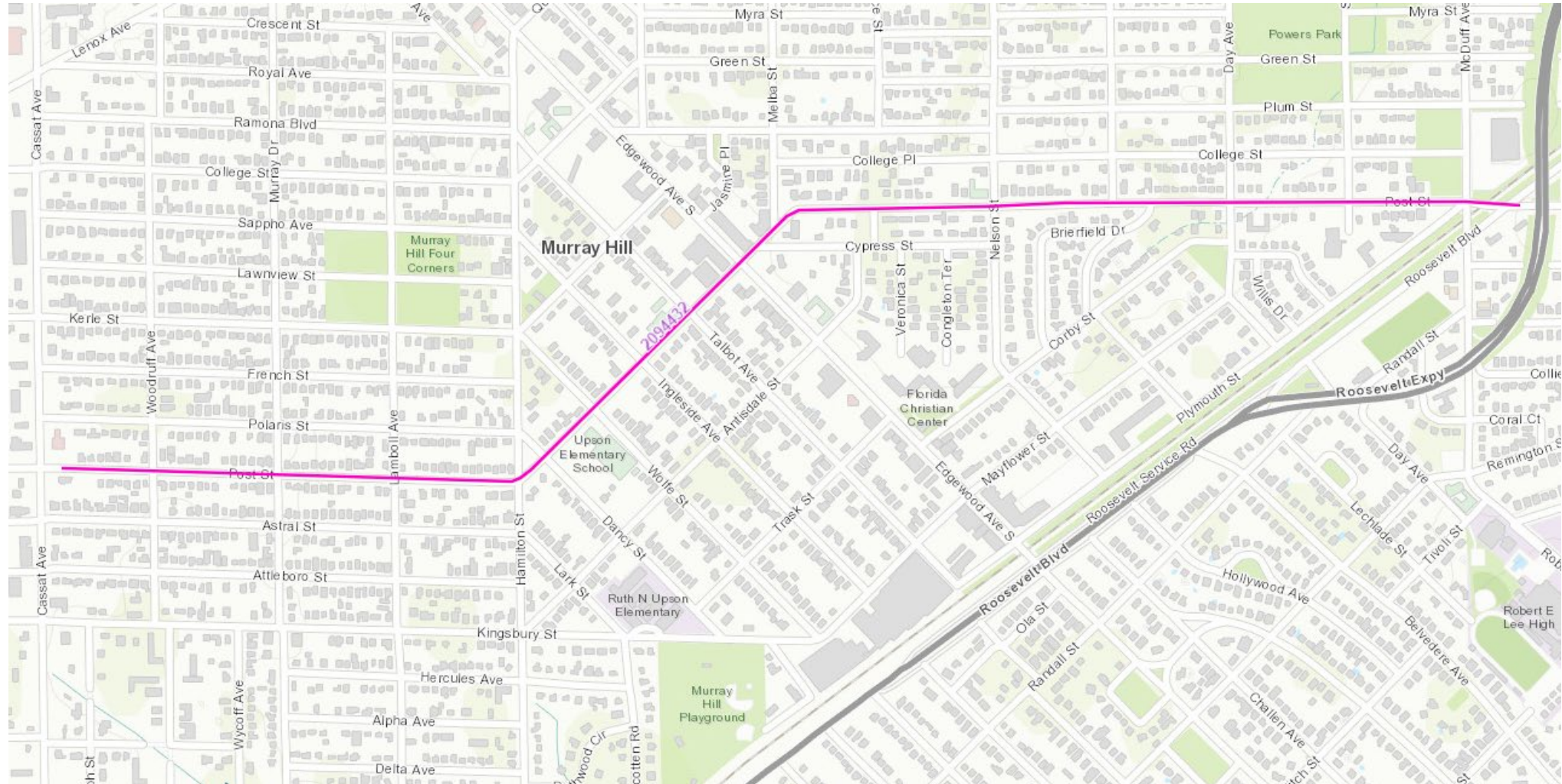




## SR228(POST ST) FROM CASSAT AVENUE TO OLD ROOSEVELT

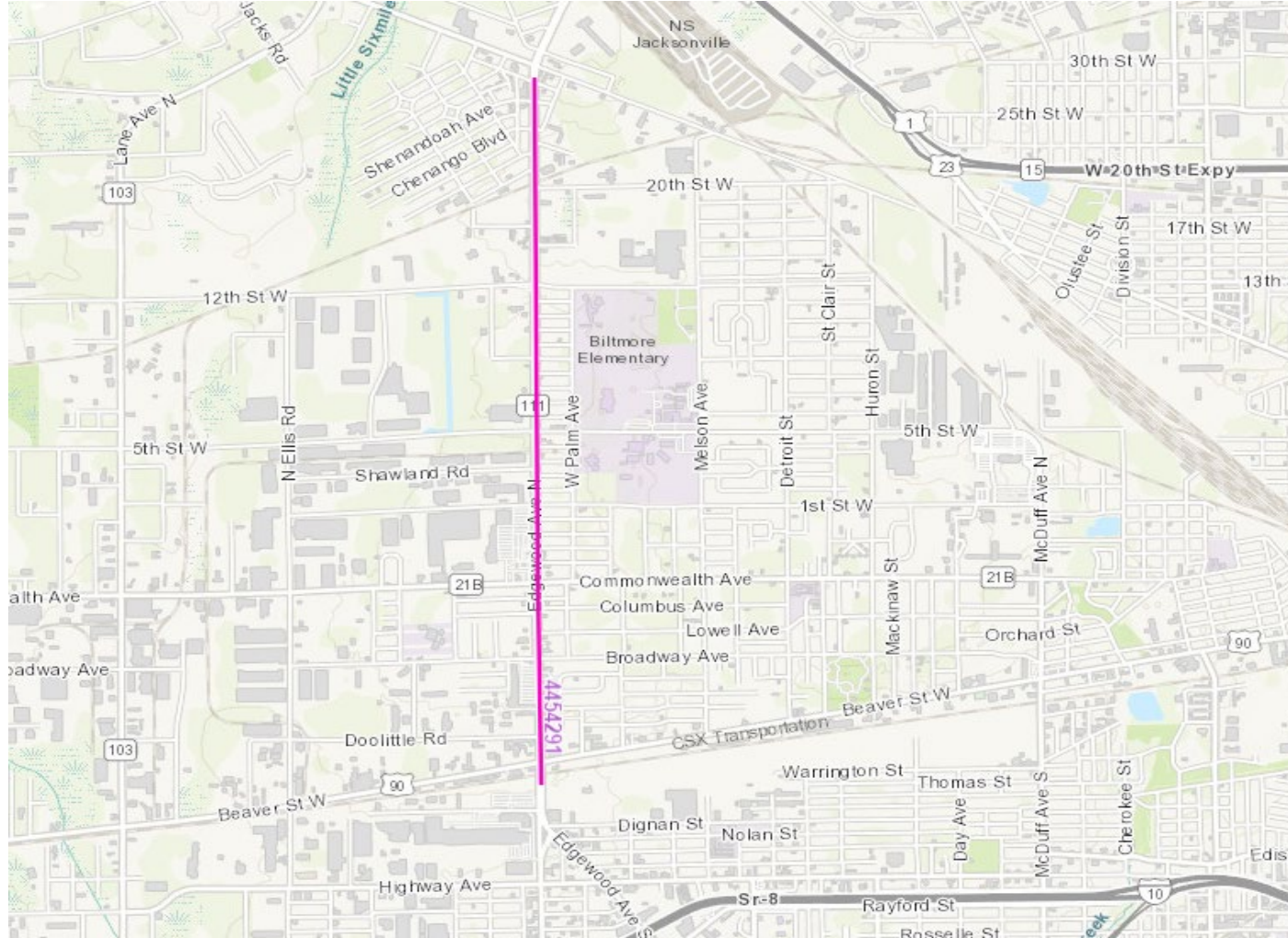
FPID: 209443-2 Resurfacing

CST in 25'



## SR111(EDGEWOOD AVE) FROM US90(BEAVER STREET) TO OLD KINGS ROAD

FPID: 445429-1 Resurfacing –  
CST in 24'

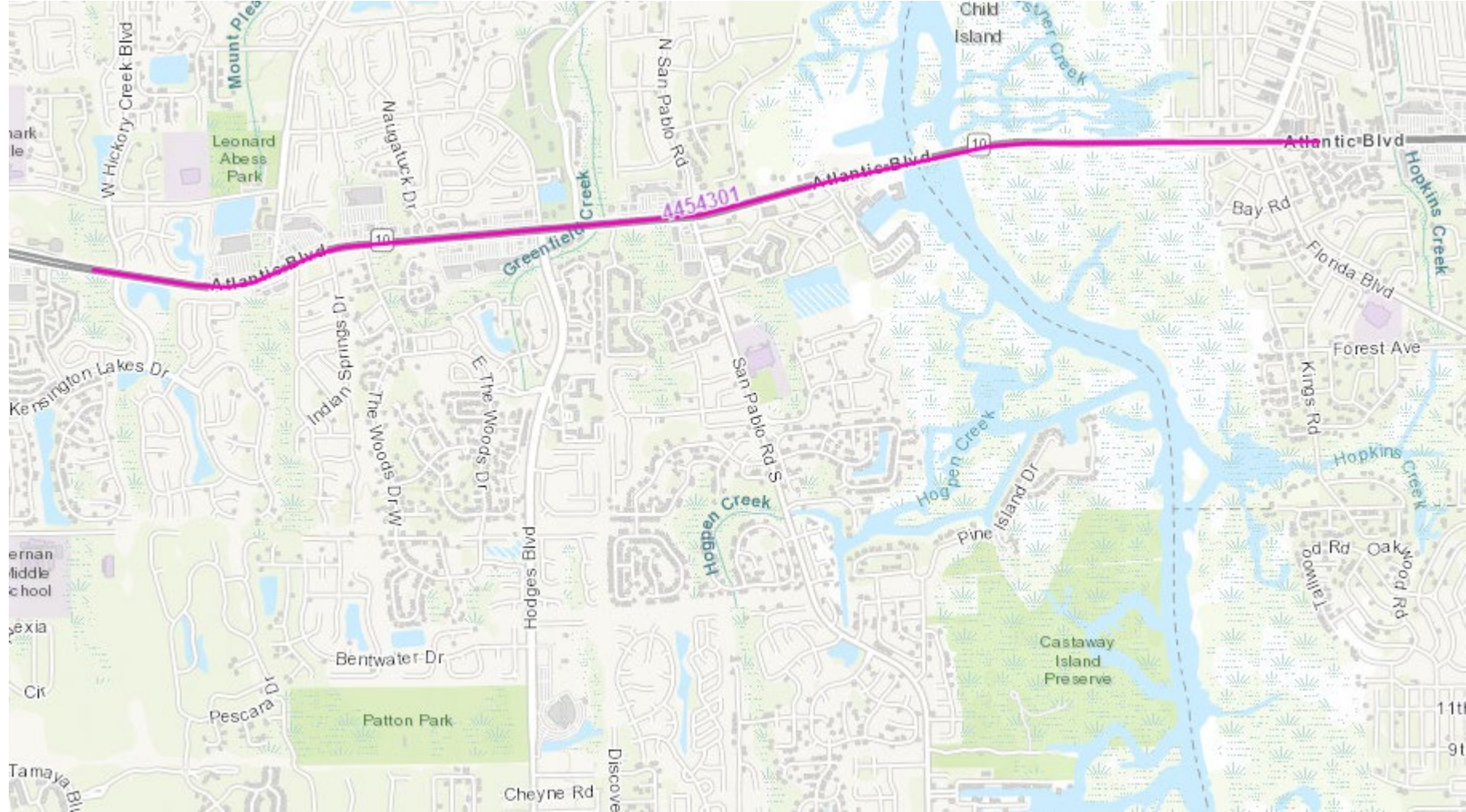




## SR10 FROM KERNAN OVERPASS TO MAYPORT ROAD

FPID: 445430-1 Resurfacing

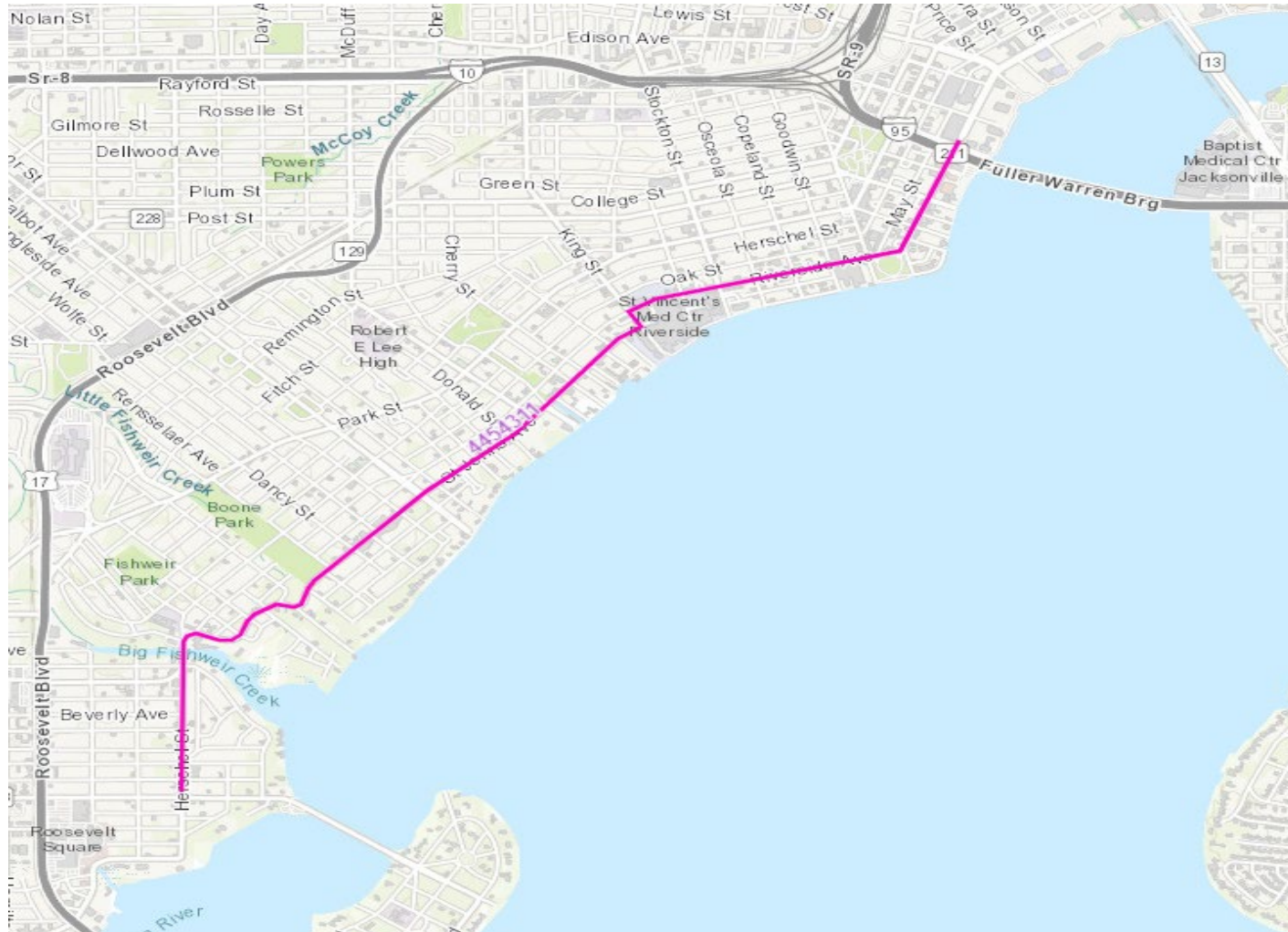
CST in 24'



## SR211 FROM SAN JUAN AVE TO I-95

FPID: 445431-1 Resurfacing

CST in 24'

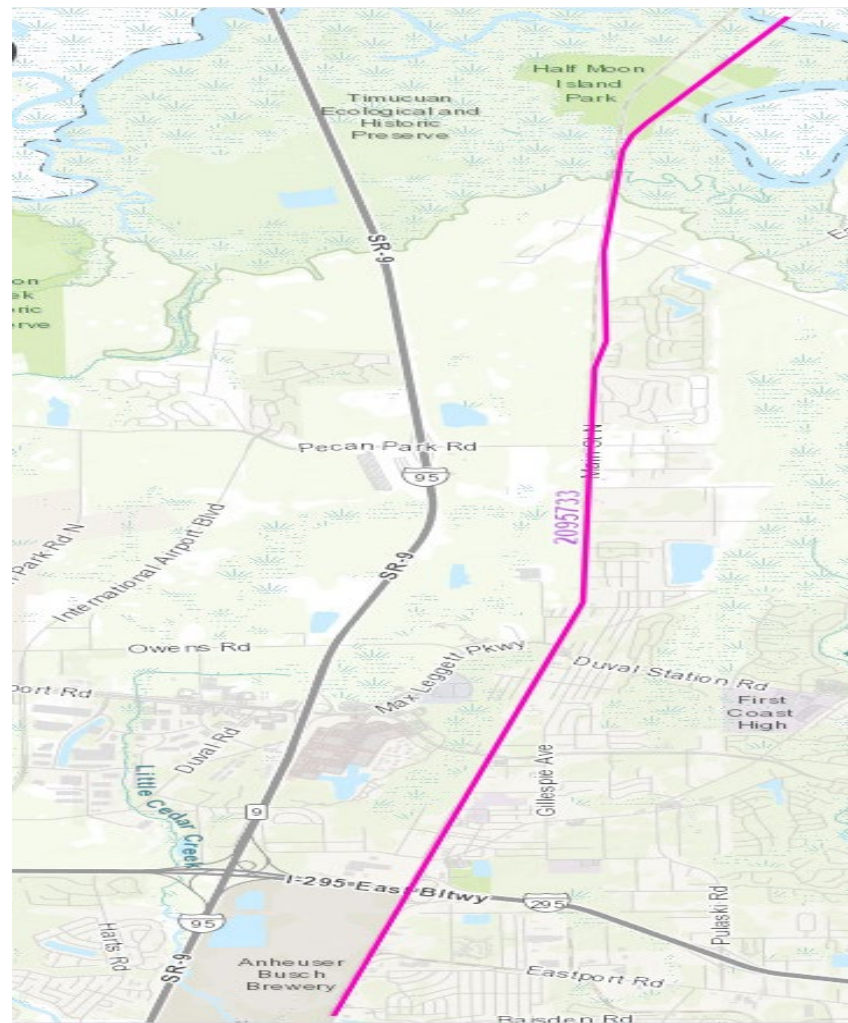




## SR5(US17) FROM NORTH OF BROWARD RIVER TO THE NASSAU COUNTY LINE

FPID: 209573-3 Resurfacing

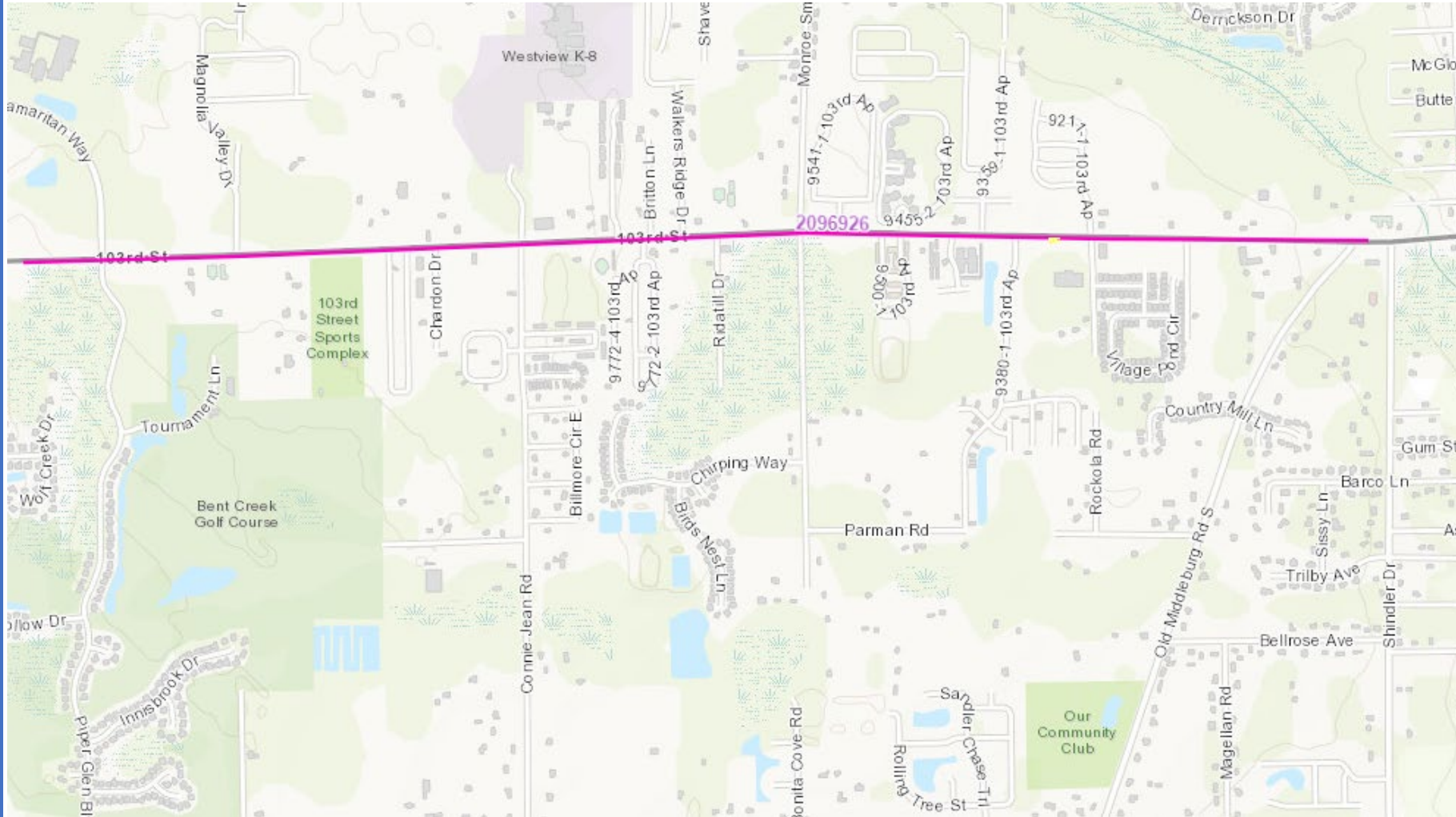
CST in 25'



## SR134 FROM SAMARITAN WAY TO SHINDLER DRIVE

FPID: 209692-6 Resurfacing

CST in 25'

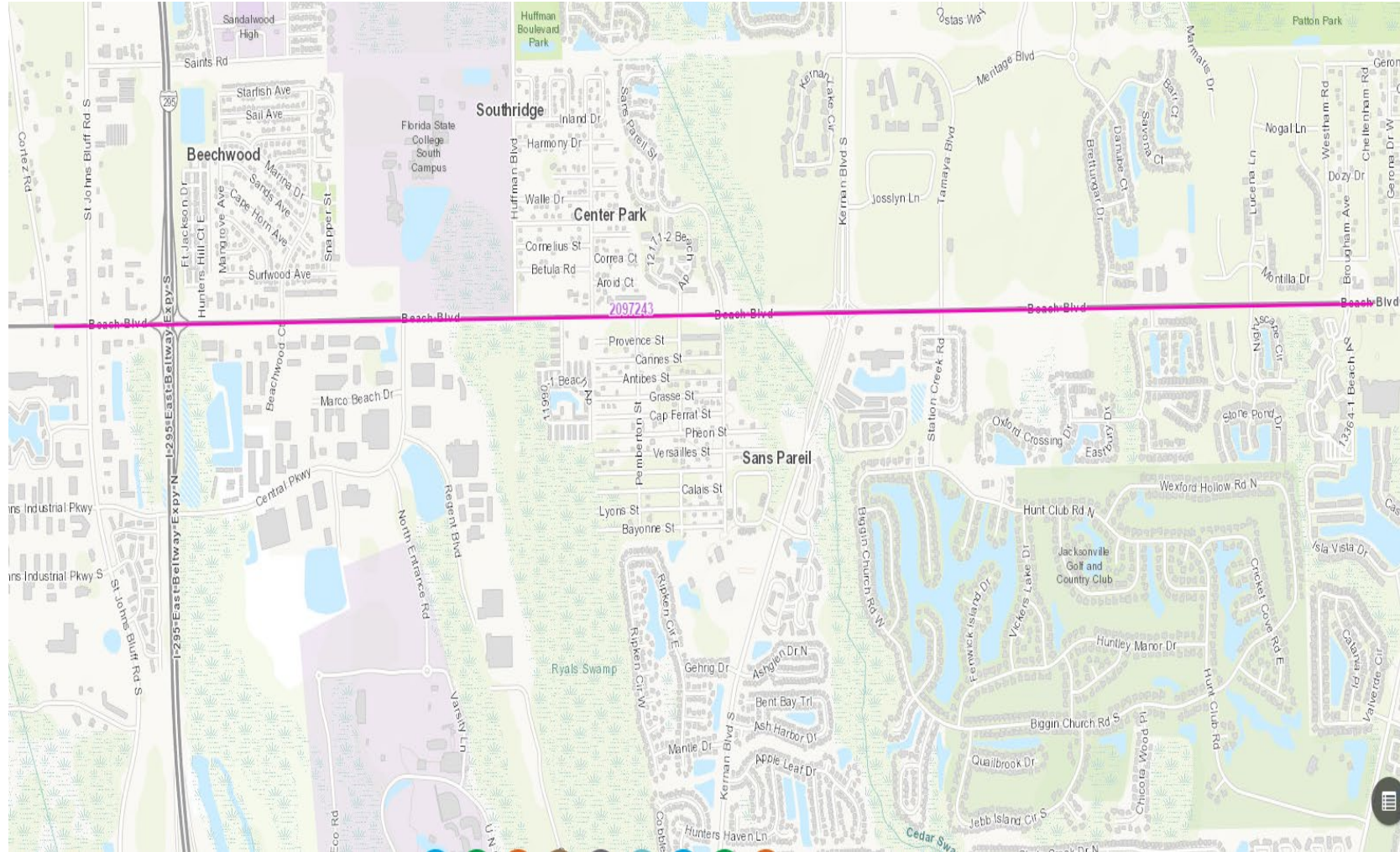




## SR212(US90) BEACH BLVD FROM ST JOHNS BLUFF TO GERONA DRIVE

FPID: 209724-3 Resurfacing

CST in 25'

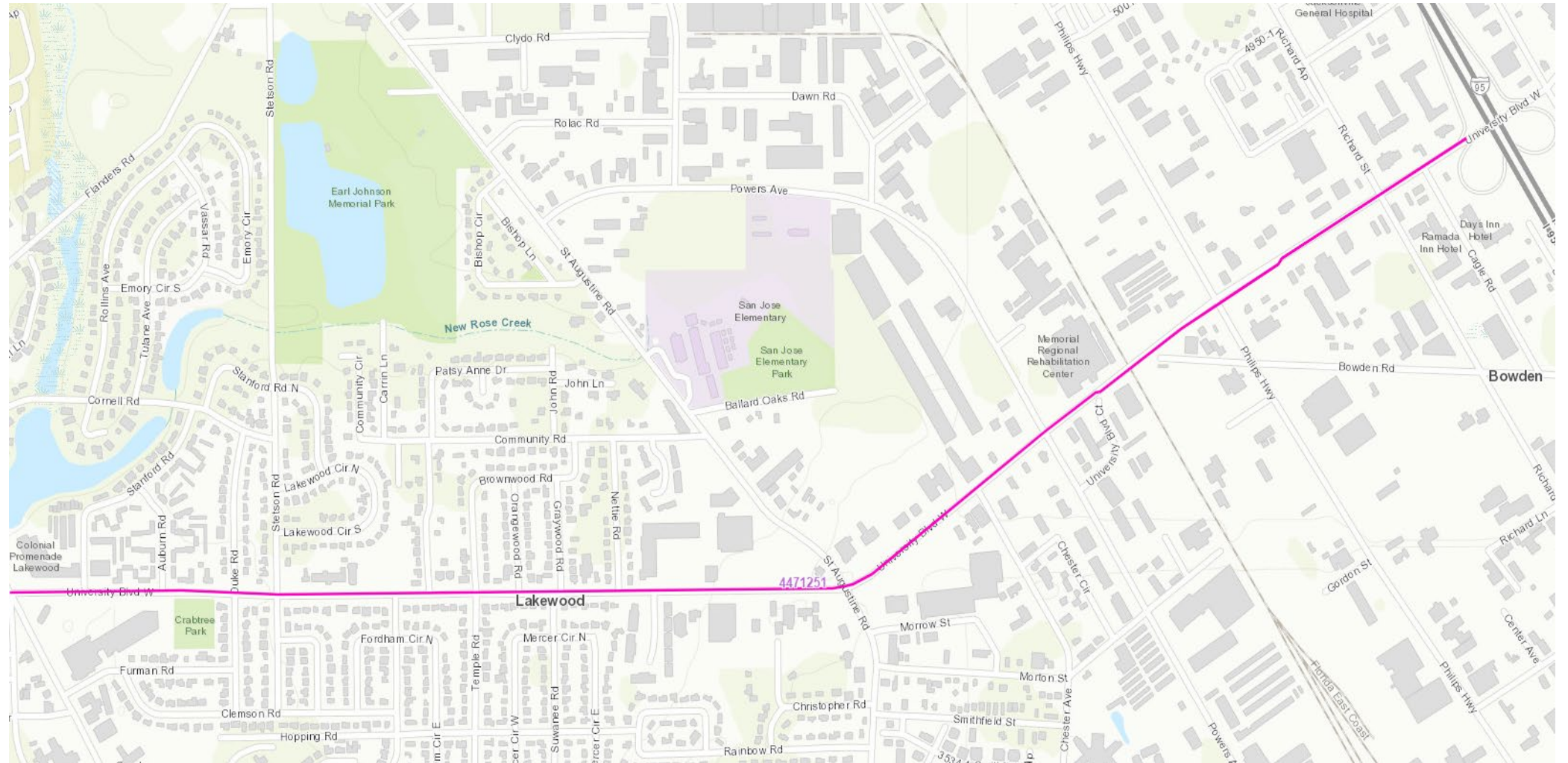




## SR109(UNIVERSITY BLVD) FROM SR13(SAN JOSE BLVD) TO I-95

FPID: 447125-1 Resurfacing

CST in 24'





## SR228A(EMERSON ST XWAY) AND SR126(EMERSON ST EXT)

FPID: 447126-1 Resurfacing

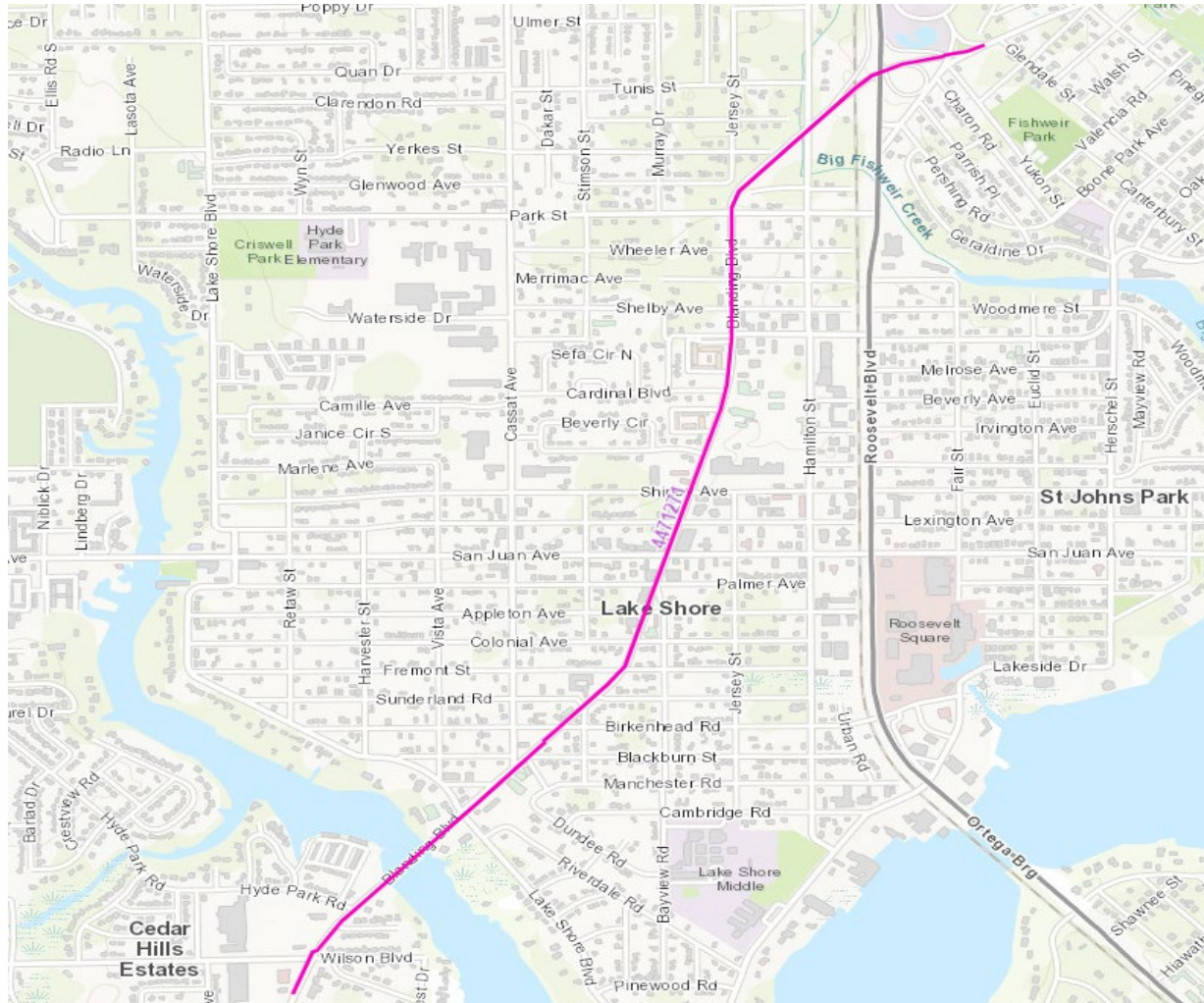
CST in 24'



## SR21(BLANDING BLVD) FROM WILSON BLVD TO ROOSEVELT

FPID: 44127-1 Resurfacing

CST in 24'





## I-95(SR9) FROM: FOREST STREET BRIDGE TO: RAILROAD BRIDGE

FPID: 446048-1 Resurfacing

CST in 24'

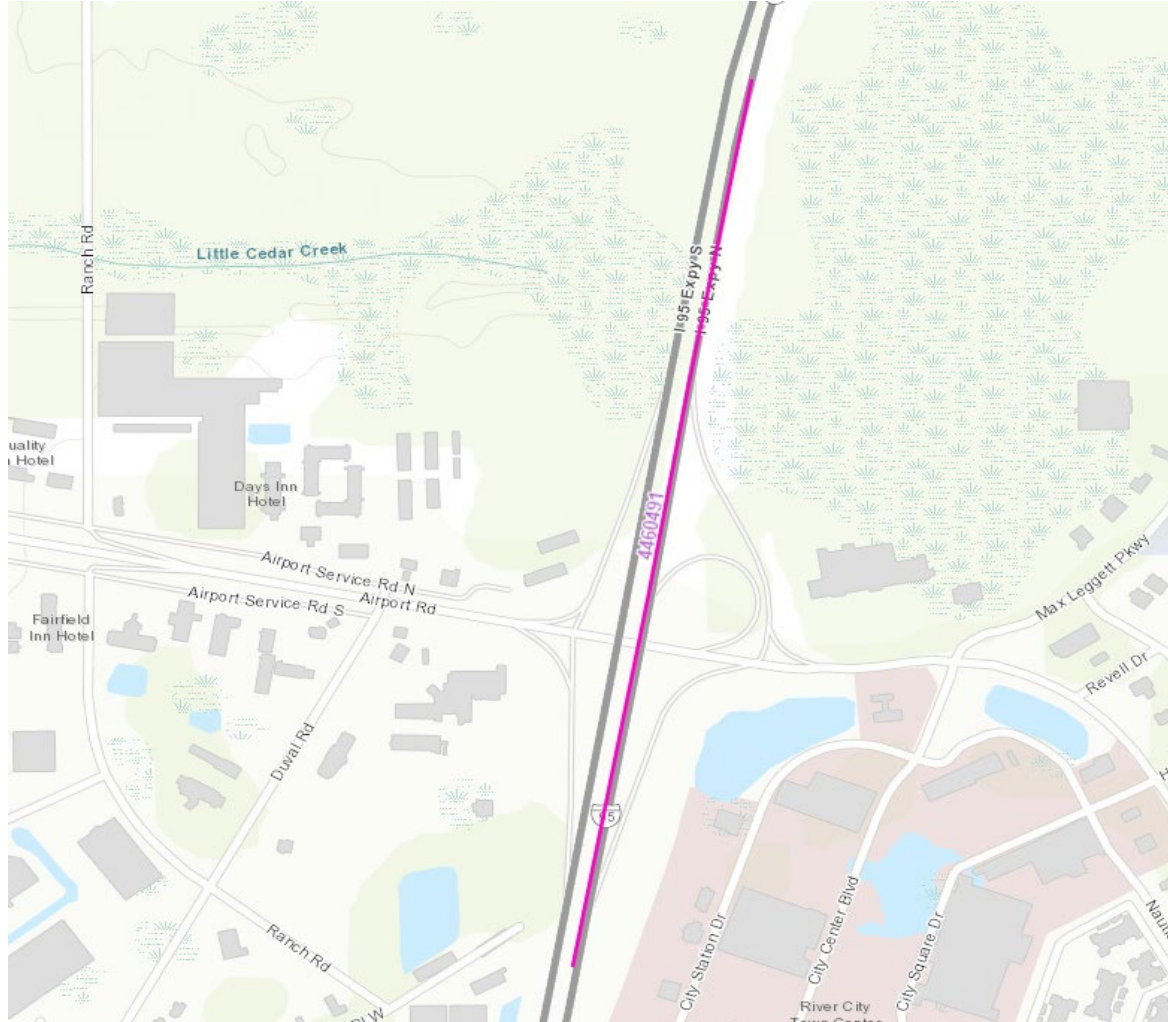




## I-95(SR9) FROM: AIRPORT ROAD TO: OWENS ROAD

FPID: 446049-1 Resurfacing

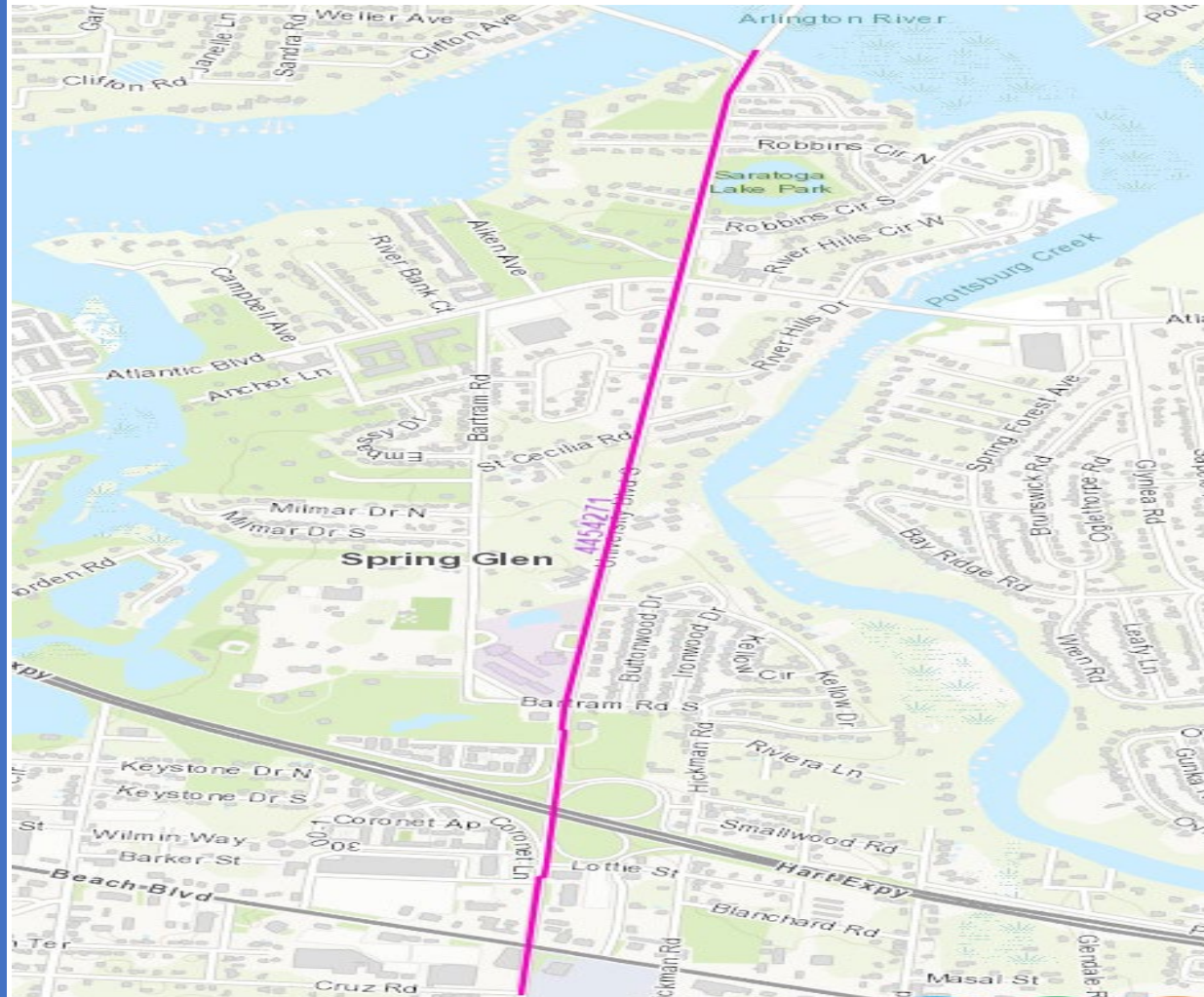
CST in 24'



## SR109 FROM CRUZ ROAD TO WATEREDGE LANE

FPID: 445427-1 Resurfacing

CST in 24'





## I-295(SR9A) FROM: PULASKI ROAD TO: NEW BERLIN ROAD

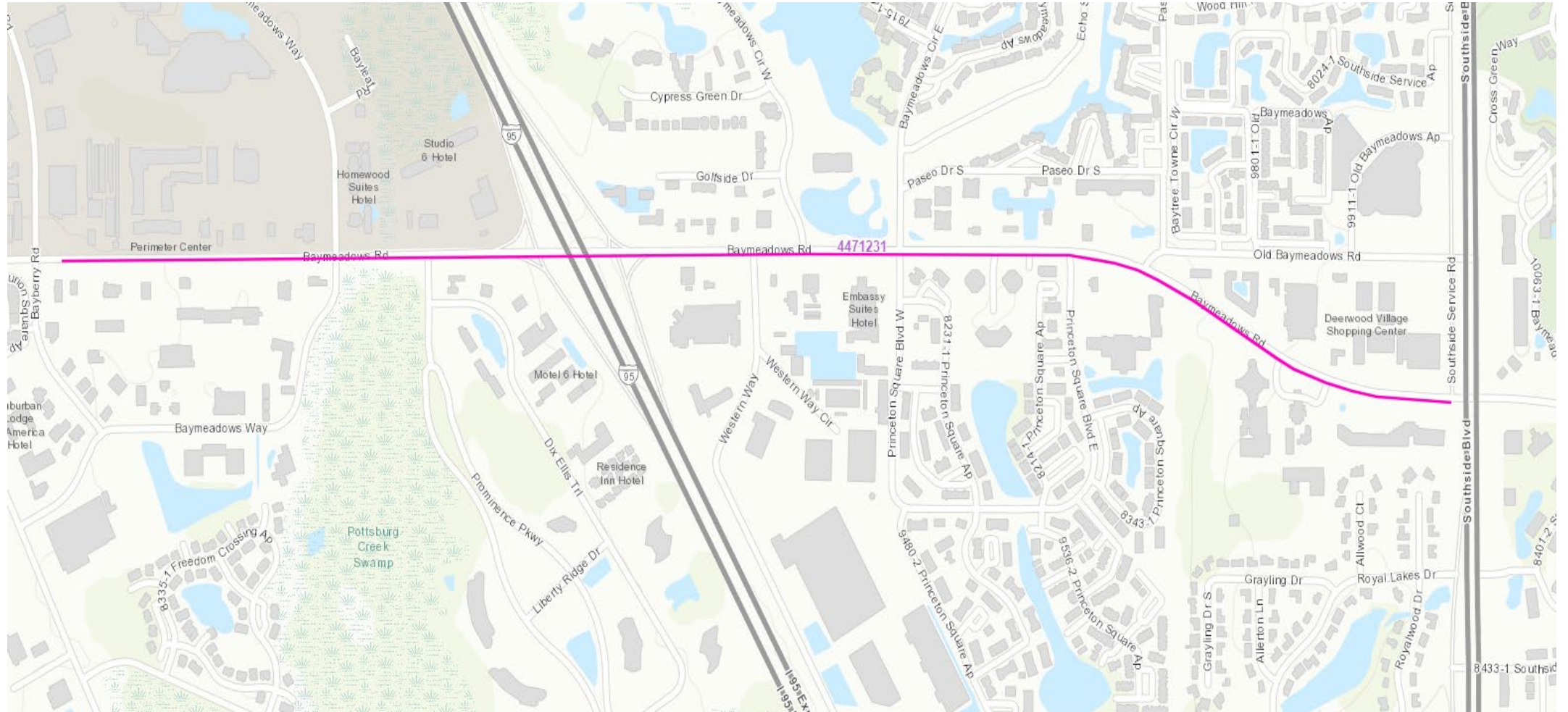
FPID: 446046-1 Resurfacing

CST in 24'





CST in 24'

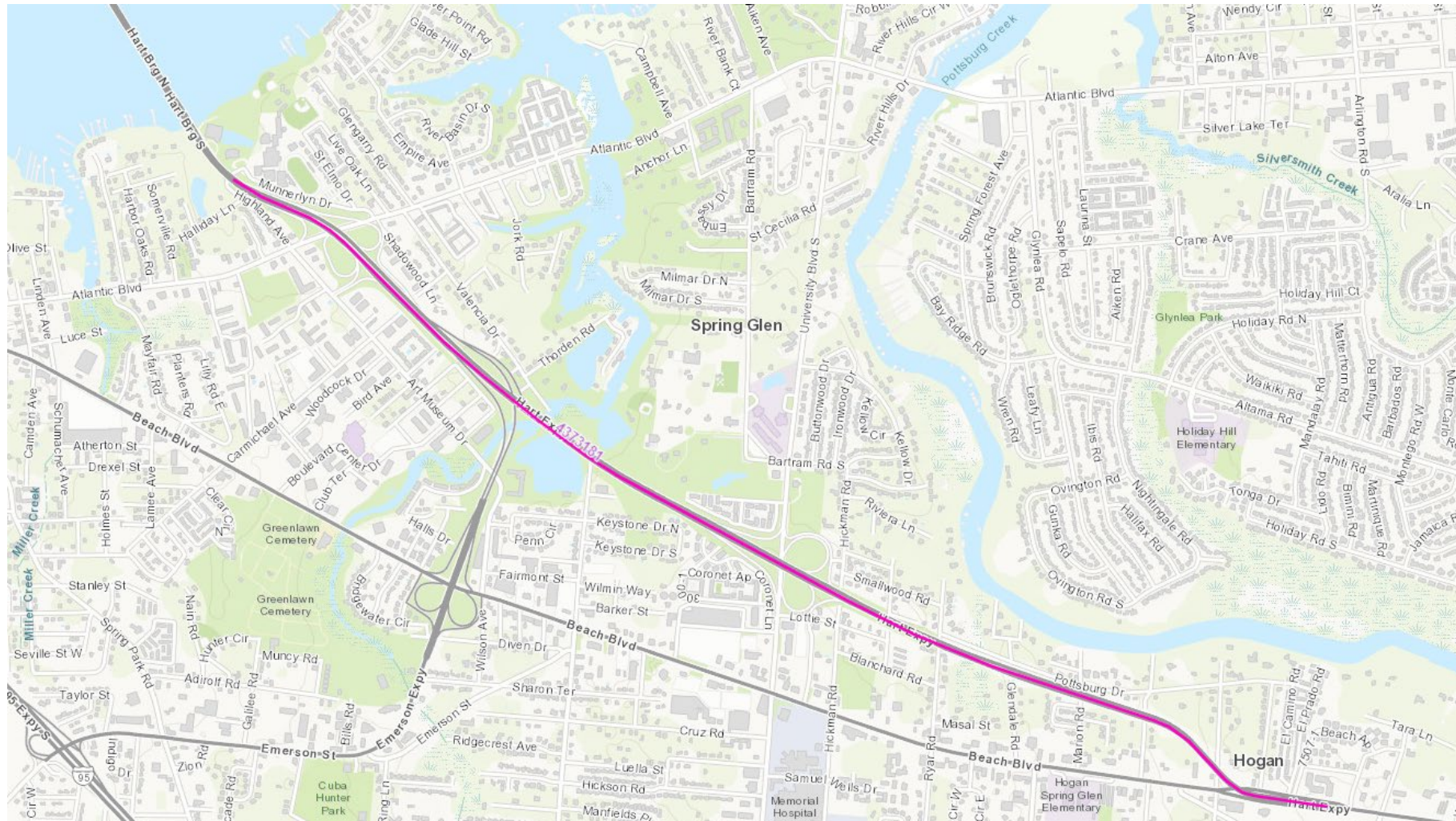




## SR228 FROM: HART BRIDGE TO: BEACH BOULEVARD

FPID: 437318-1 Resurfacing

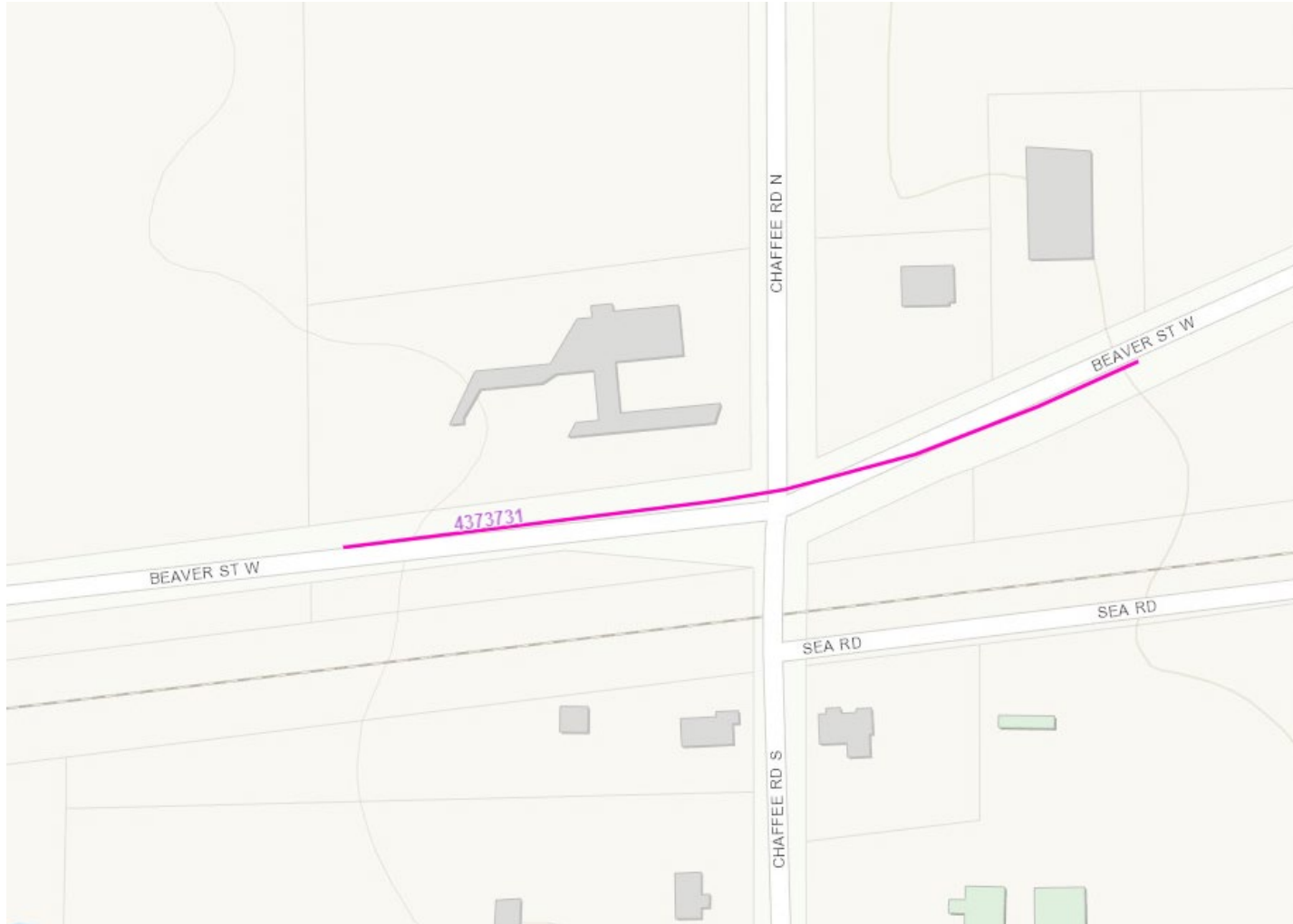
CST in 26'



## SR10(US90)(BEAVER ST)AT CHAFFEE RD

FPID: 437373-1 Traffic Signals

CST in 26'

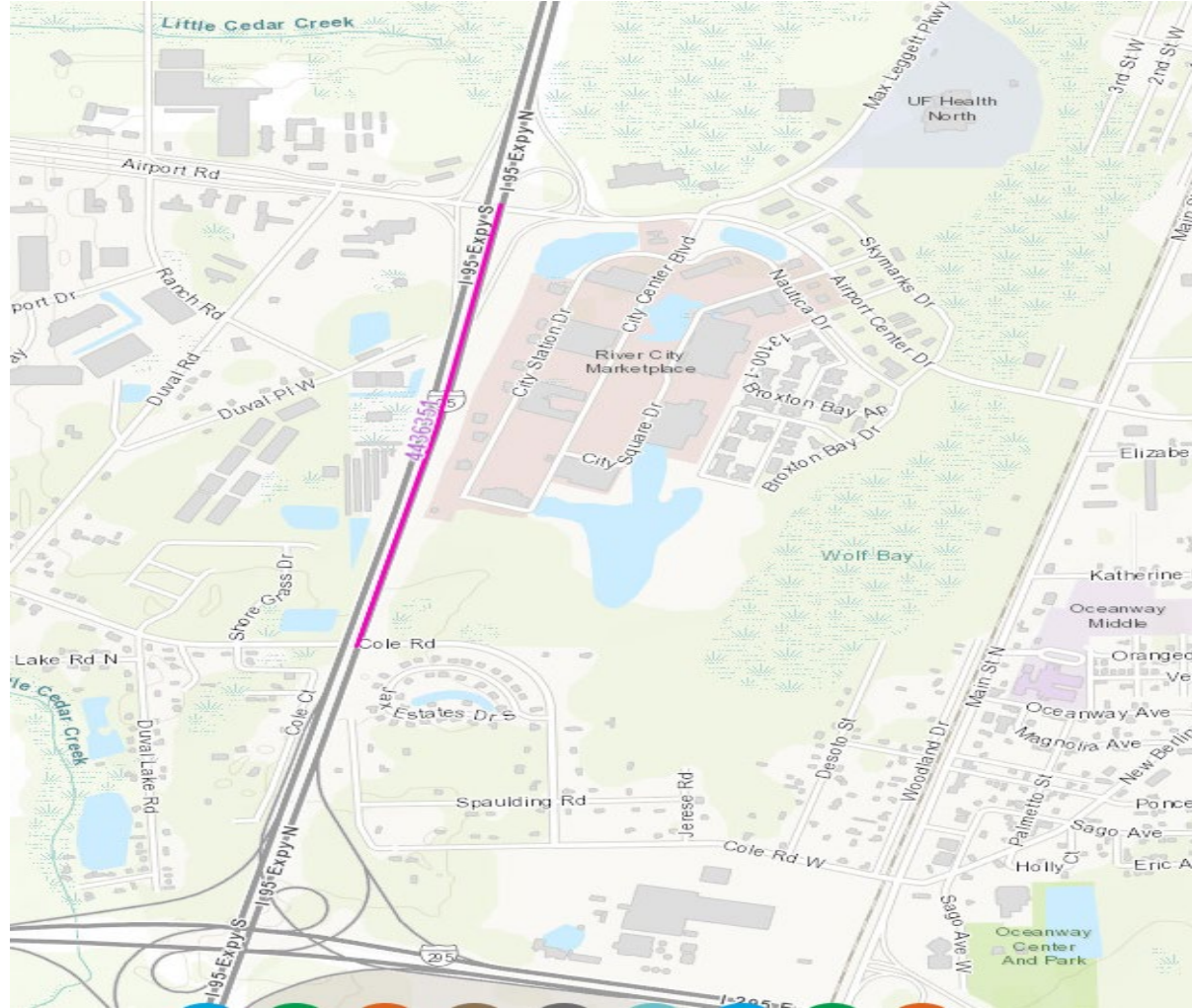




## I-95(SR9) FROM COLE ROAD TO AIRPORT ROAD

FPID: 443635-1 Landscaping

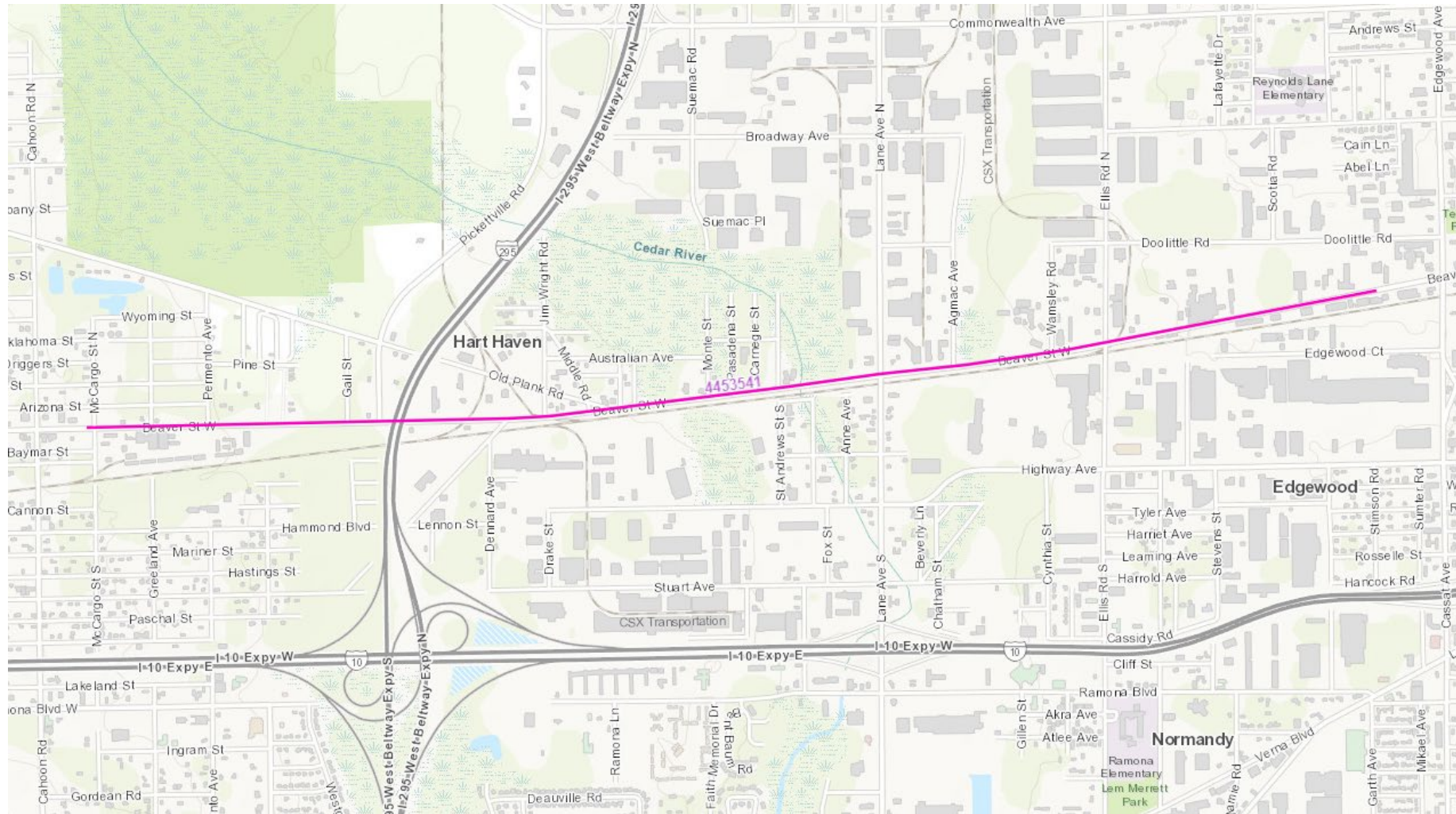
CST in25'



## SR10 (US90) FROM MCCARGO STREET TO EDGEWOOD AVE

FPID: 445354-1 Resurfacing

CST in 24'

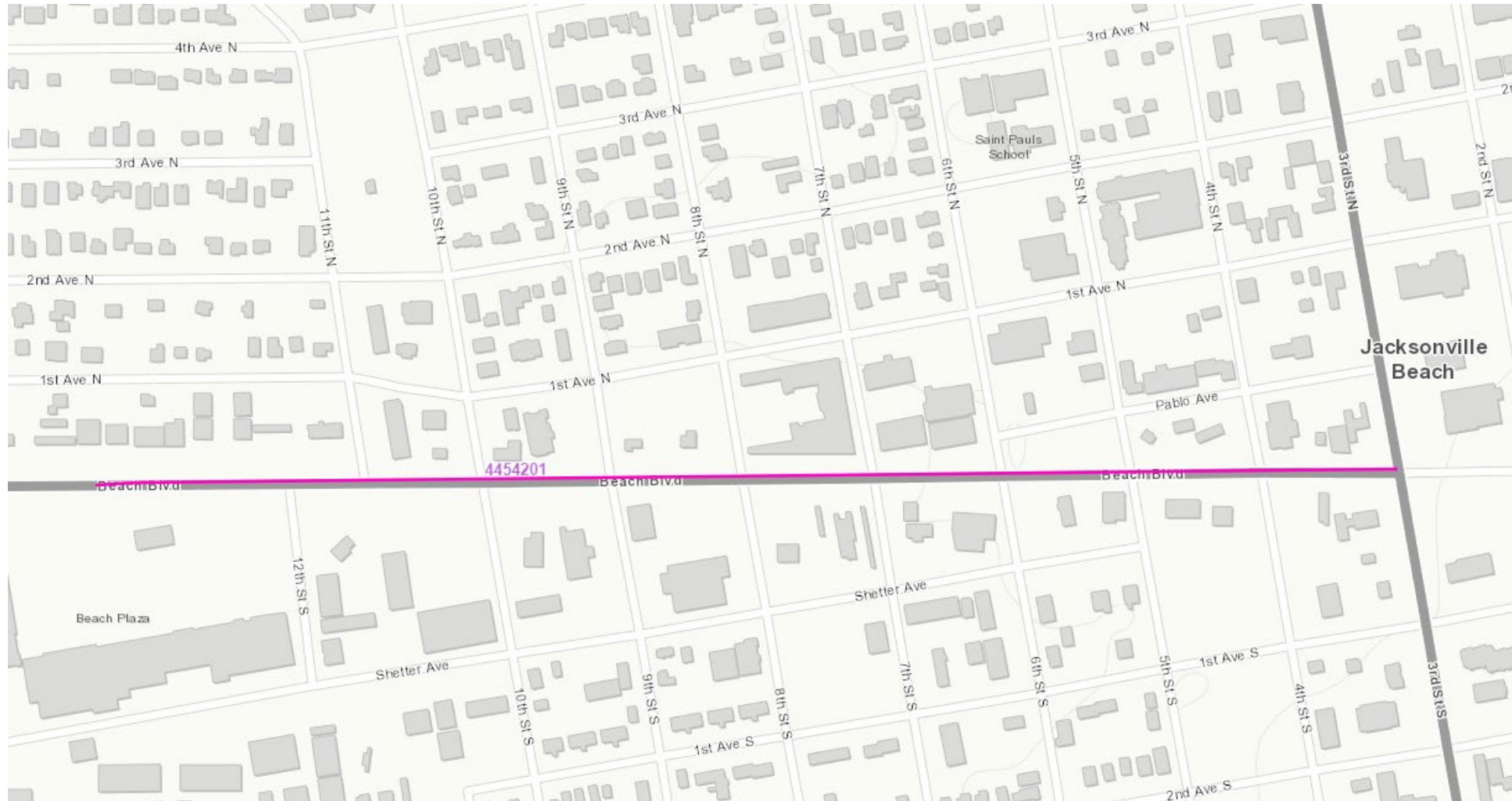




## SR212(US90) FROM 12TH STREET TO SRA1A

FPID: 445420-1 Resurfacing

CST in 24'

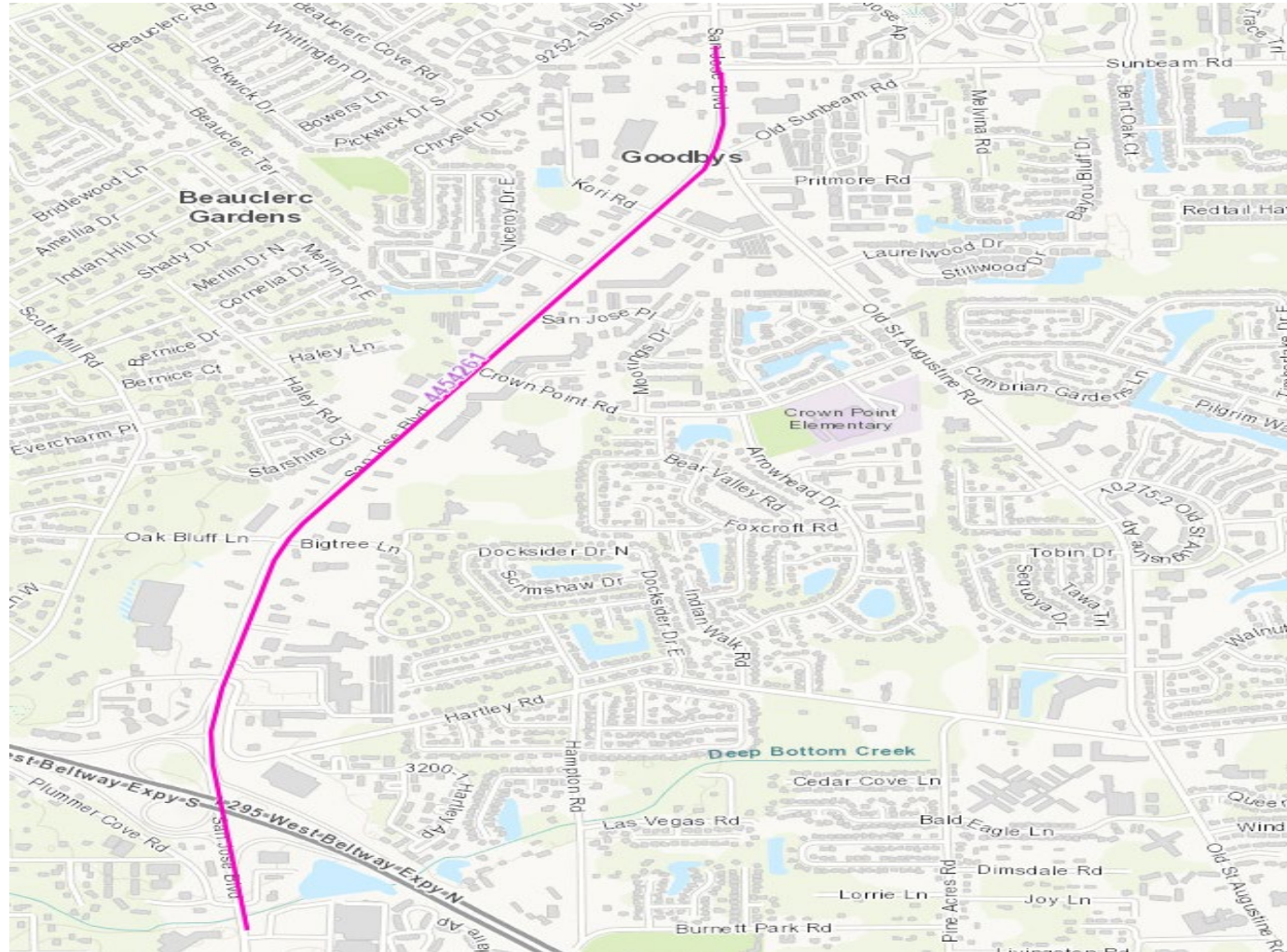




## SR13(SAN JOSE BLVD) FROM I-295(SR9A) TO SUNBEAM ROAD

FPID: 445426-1 Resurfacing

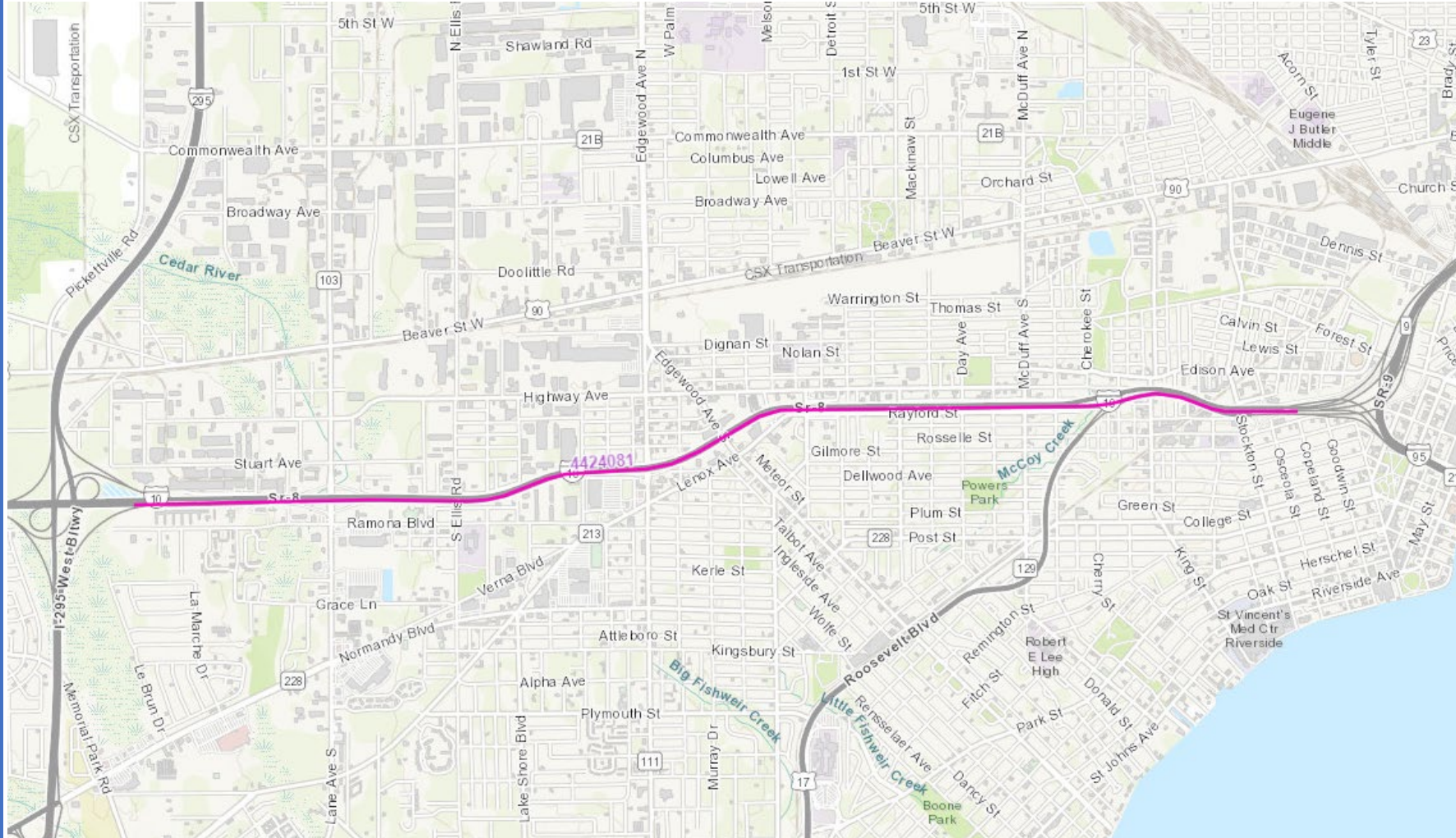
CST in 24'



## I-10(SR8) FROM I-295 TO I-95

FPID: 442408-1 Landscaping

CST 25' & 26'

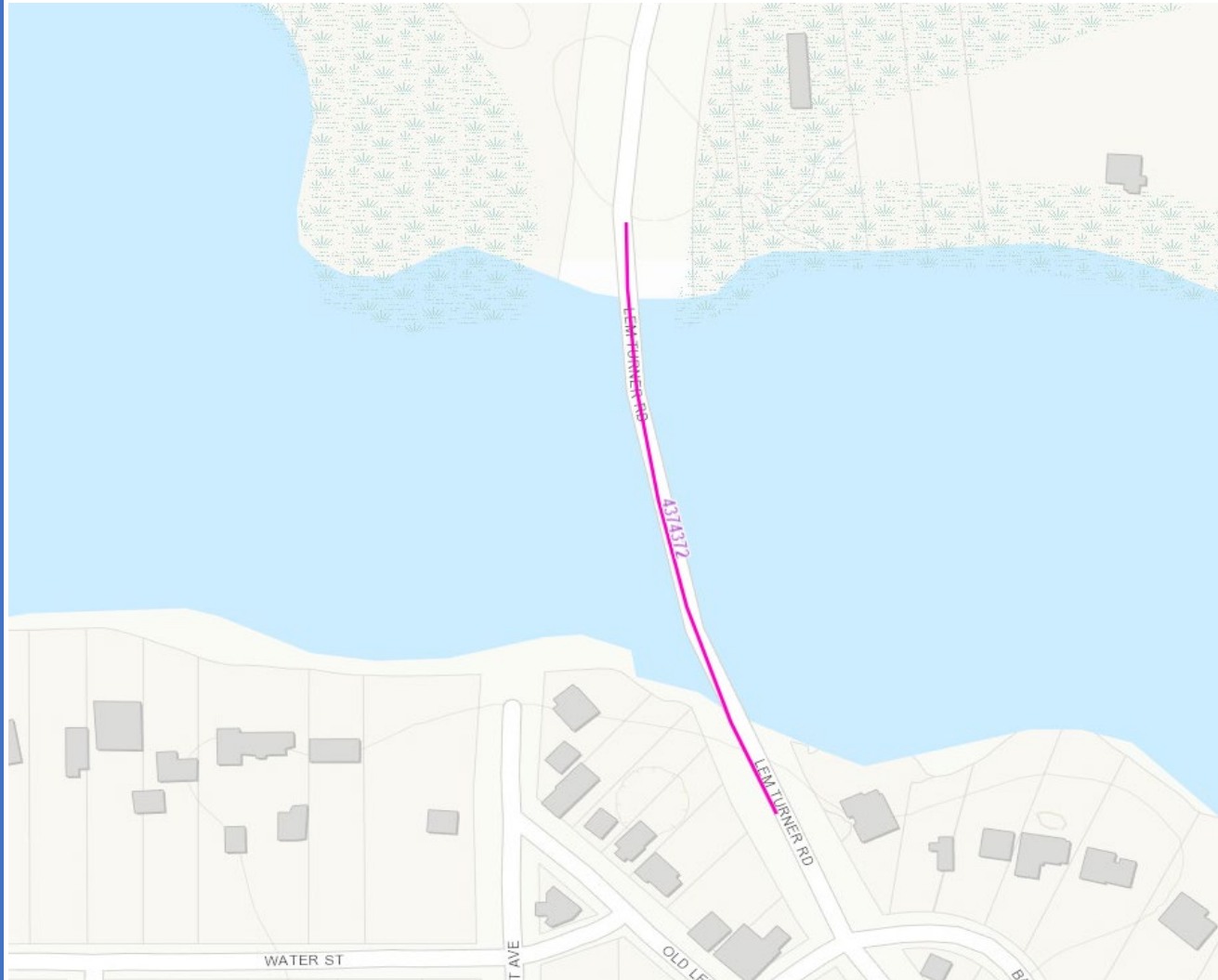




## **SR115(LEM TURNER ROAD) TROUT RIVER BRIDGE #720033**

FPID: 437437-2 Bridge Replacement

DSB in 26'

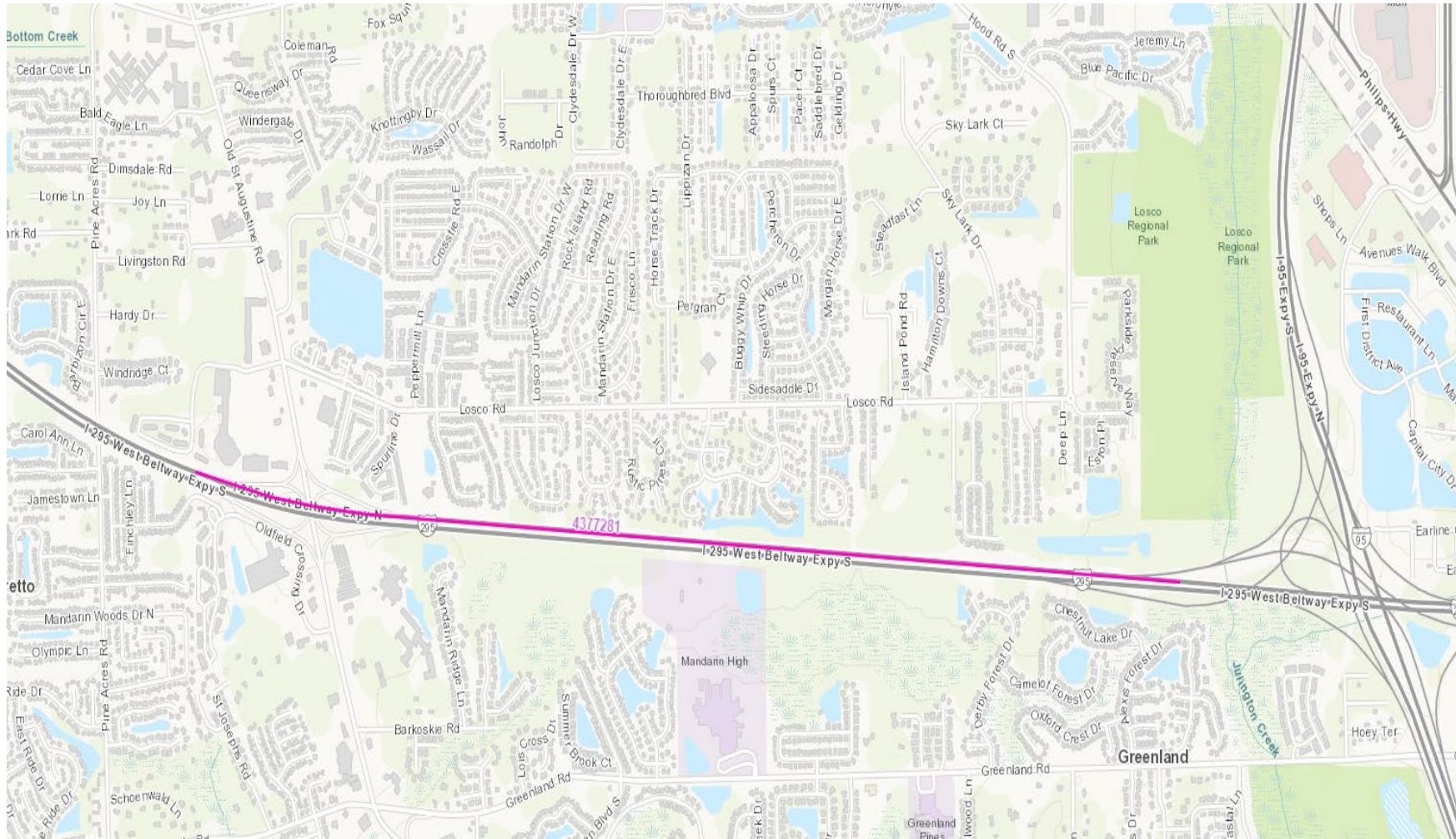




# I-295(SR9A) FROM: I-95 TO: W OF OLD ST AUGUSTINE ROAD INTERCHANGE

FPID: 437728-1 Landscaping

CST in 24'





# Questions?

