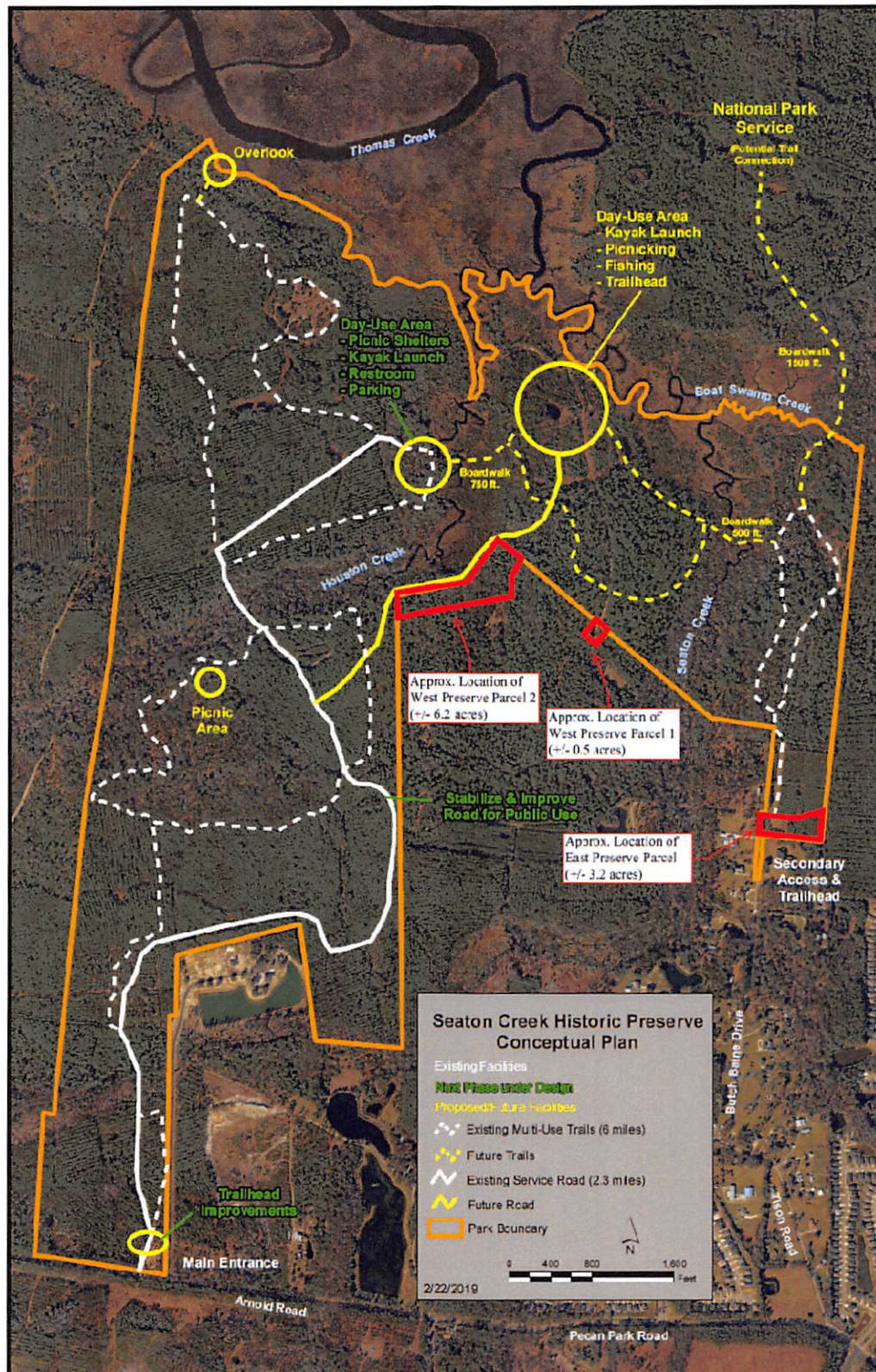
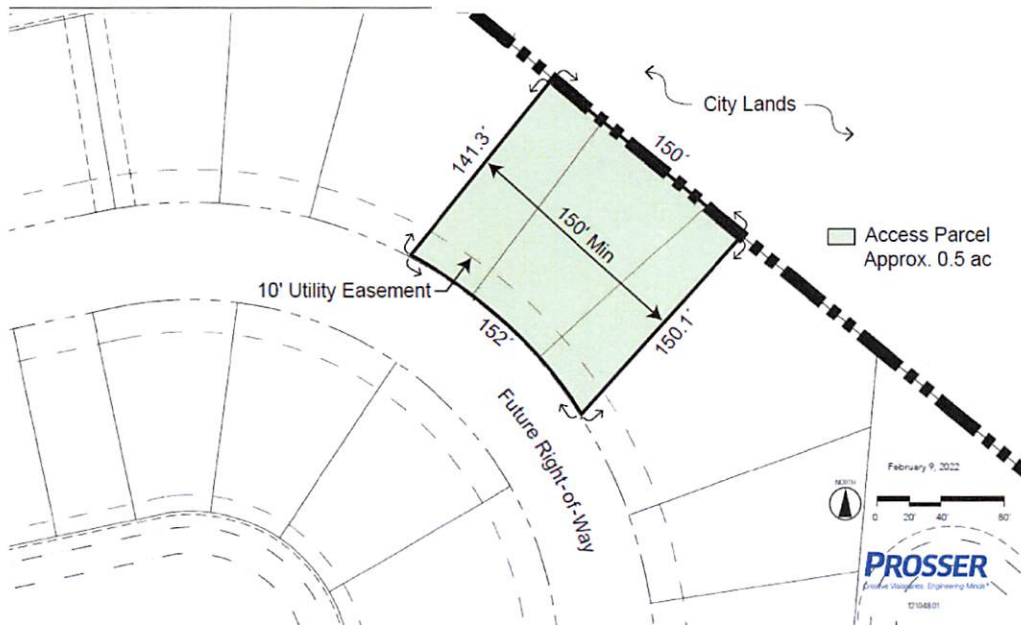


Existing Seaton Creek Preserve Master Plan

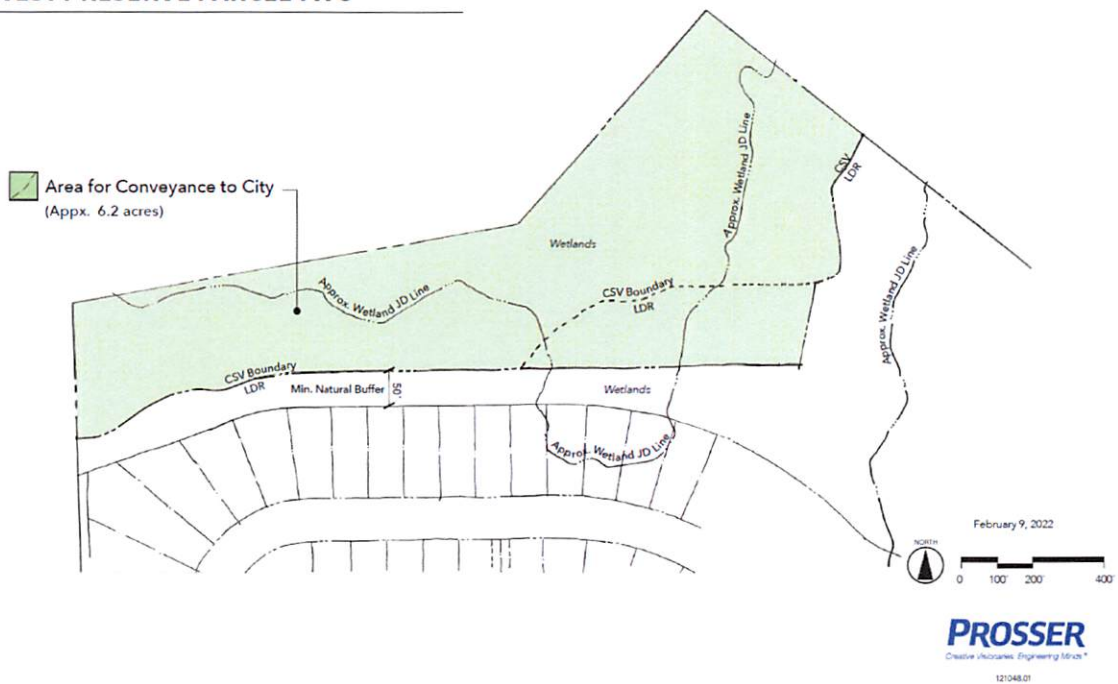


Land to City of Jacksonville

WEST PRESERVE PARCEL ONE

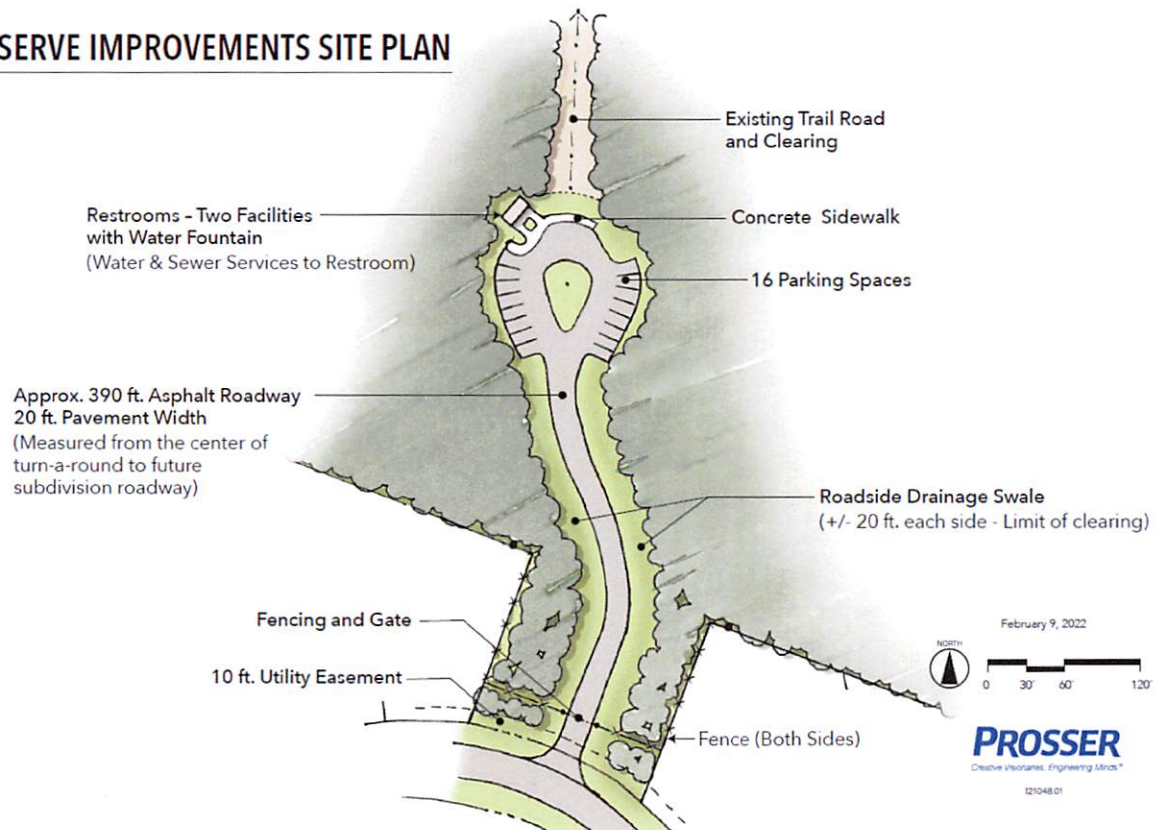


WEST PRESERVE PARCEL TWO



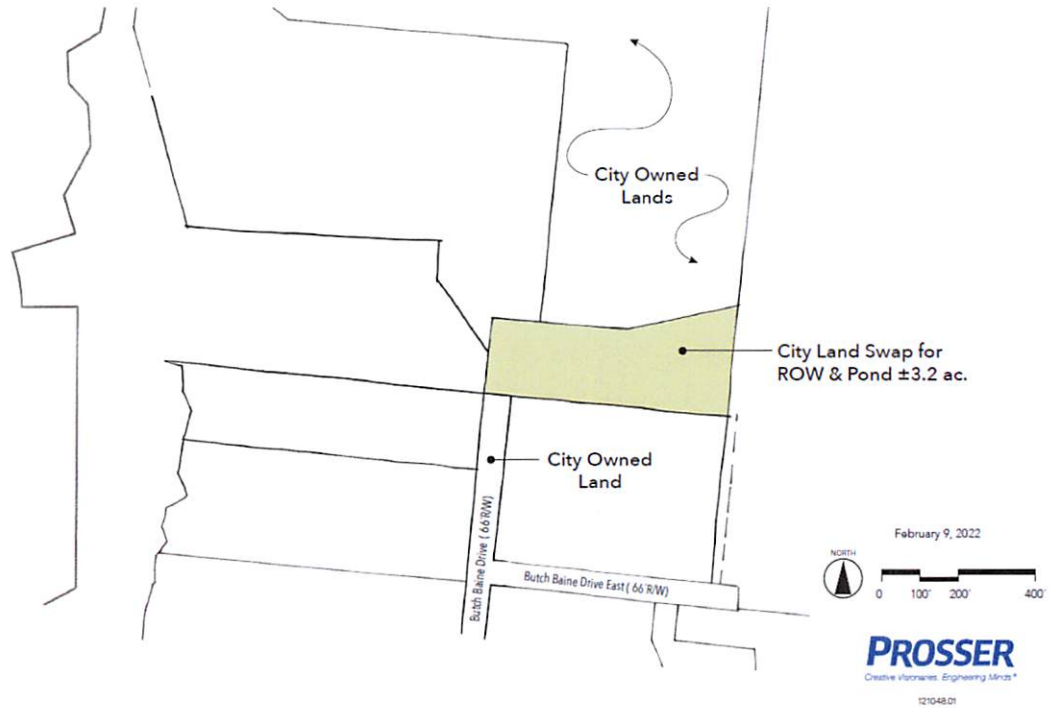
Park Improvements for the City of Jacksonville (at Pecan's Envy's cost)

PRESERVE IMPROVEMENTS SITE PLAN



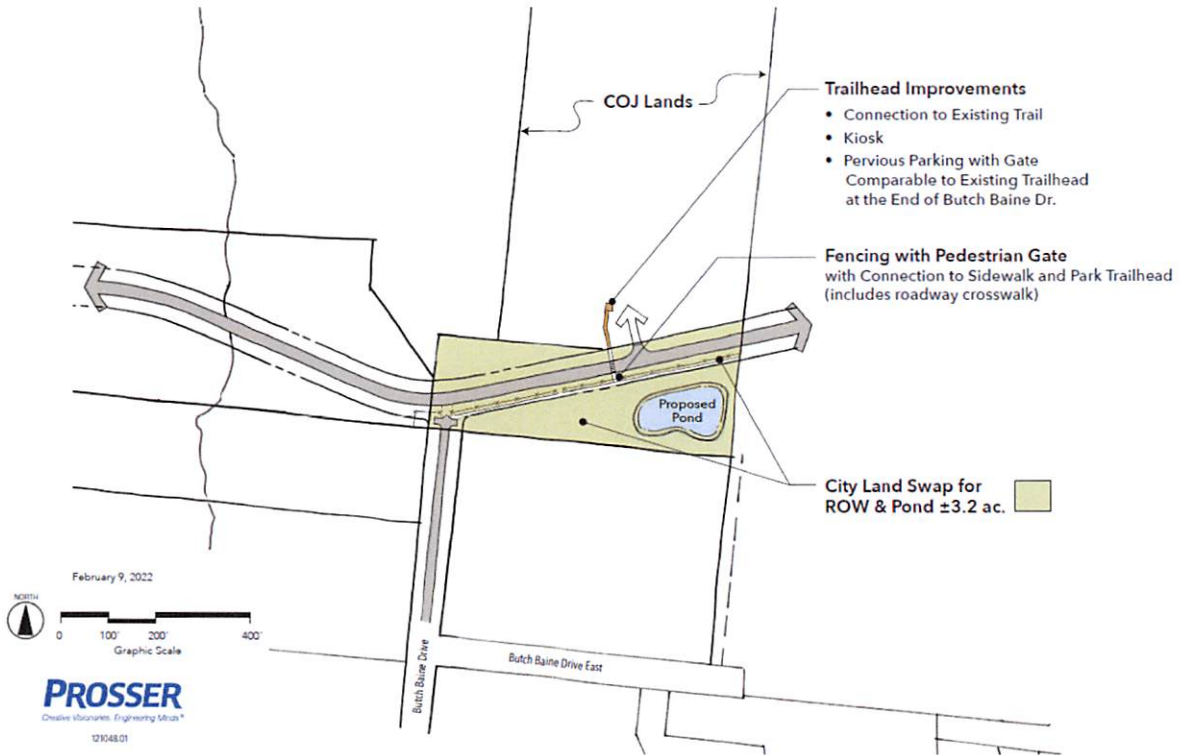
Land to Pecan's Envy

EAST PRESERVE PARCEL



Road and Park Improvements at East Entrance (at Pecan's Envy's Cost)

EAST PRESERVE PARCEL SITE PLAN



Area Map

