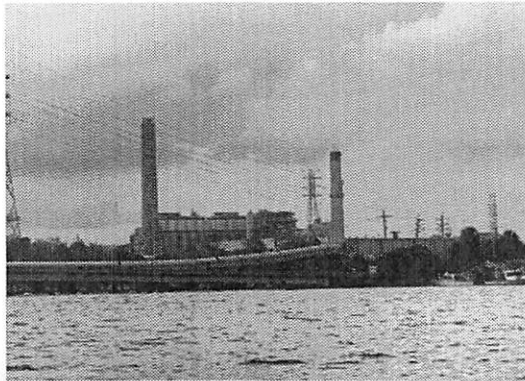


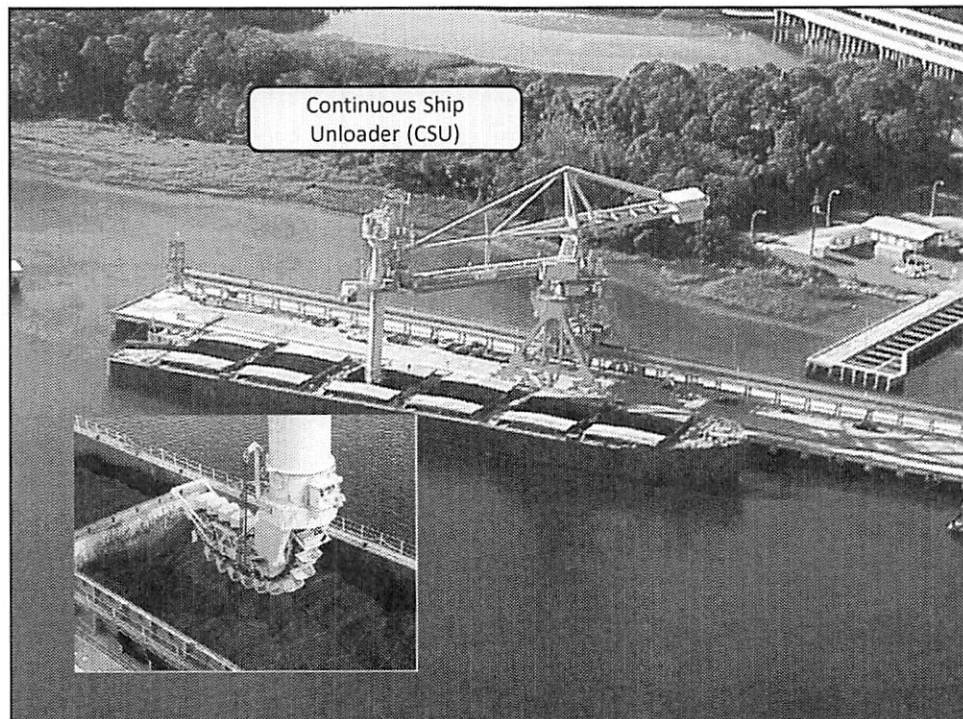
JEA NGS Pet Coke Deliveries

Discussion for Jacksonville
Waterways Commission



JEA

1



2

What is Pet Coke and how is it transported?

- Pet coke is an oil refinery byproduct
- Considered a solid fuel like coal
- It is burned in boiler furnaces to generate steam, used to turn a turbine, to produce electricity.
- Pet Coke is delivered by vessel or barge



3

Vessel Info Cont.'

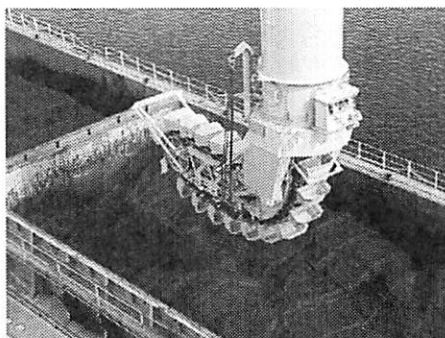
- Since March of 2021 JEA has been receiving foreign (European) Pet Coke.
 - Vessels are loaded in the Netherlands.
 - Vessel transit time is 12-14 days across the Atlantic, compared to 4-5 days for domestic or South American sourced pet coke (see previous slide).
 - JEA has received 5 vessels of pet coke from the Netherlands without incident.
 - The 6th vessel, received in March of 2022, was the only one that was excessively dusty.
 - The other five vessels had moisture contents of between 9% and 14% at the load port, prior to departure.
 - The dusty vessel in question had a 10.3% moisture content at the load port.
 - The ship in question spent an additional 5 or so days at sea due to going around a storm in the Atlantic.
 - By the time it arrived in Jacksonville it had been around 20 days or so since it had been loaded. Giving it even more time to dry out than what is normal.



4

Safety Process for Weather Events

- Unloading is shutdown for
 - Heavy Rains
 - Lightning within 7 miles
 - High Winds >35 MPH



JEA

5

March 8, 2022 Incident

- Vessel unloading began at 3:10 am
- Operator noticed dusting at ~ 7:55 am, Manager was notified but no material was observed in the water at that time
- At ~ 10:15 am FDEP notified JEA that they received a call about a potential oil spill
- Unloading was stopped when a scum was observed from dusting
- USCG, FDEP and JEA investigated river for any potential impacts. No environmental impacts were identified, and scum was dissipating. No further actions were required.
- Contributing factors to event- wind, moisture content
 - Pet coke was dryer than normal due to longer transit time

JEA

6

Corrective Actions

- Designated personnel to monitor for potential dusting events during offloading
 - Person has authority to cease offloading
- Formal documentation of observations is required via official log
- If dusting is observed, a request to spray with water will be submitted.

