



- The watercolor above was done by Chris Flagg, VP at Haskell (Landscape Architect and artist)



*Featuring*

**US NAVY COLD WAR EXPERIENCE**

**USS Orleck (DD 886) Museum Ship**



**Korean War**  
1950 - 1953

**Cold War**  
1951 - 1991

**Vietnam War**  
1955 - 1975

- The image above is how you could picture her along side of pier one.
- The USS Orleck is a ship with a long and storied history.
- She will be our main exhibit of our theme of the US Navy Cold War Experience.
- The Cold War is a time period that represents many Americans over many generations.
- An added historical bonus is that she was built during WWII, linking us to yet more historical significance and past generations we can never forget and will always be thankful for.



### A Brief History on the USS Orleck:



- Named after Lieutenant Joseph Orleck, Commanding Officer of USS Nauset, killed in action on 9 September, 1943 during World War II, & posthumously awarded the Navy Cross.
- **Gearing Class Destroyer**, keel laid in 1944, launched on 12 May '45, & Commissioned 15 September, 1945.
- The “**Top Gun**” of Vietnam, fired 11,000+ rounds earning the nickname “**Grey Ghost of the Vietnam Coast**” & netting an astonishing **14 battle stars** throughout the war.
- In the **Korean War** become the charter member of the “**Train Busters Club**” and received **4 battle stars** during the war.
- Received updates to original hull frame that included: **ASROC** (Anti-Submarine **R**ocket **l**auncher) & **DASH** (**D**rone Anti-Submarine **H**elicopter system)



*with*  
**18 BATTLE STARS**



- **The most decorated post-WWII US Navy Ship of all time!**
- **There were 14 Gearing Class destroyers homeported at Naval Station Mayport! -> This will make Jacksonville the perfect reunion destination!**
- **Awards included:** Navy Unit Commendation, Battle ‘E’, China Service Medal, World War II Victory Medal, Navy Occupation Service Medal, National Defense Medal (multiple awards), Korean Service Medal (multiple awards), Armed Forces Expeditionary Medal (multiple awards), Vietnam Service Medal (multiple awards), Republic of Korea Presidential Unit Citation, Republic of Vietnam Gallantry Cross Unit Citation, United Nations Service Medal, & Republic of Vietnam Campaign Medal

## Why is it leaving Lake Charles, LA?



It needs a great home! The Bold City can do that!

- The Orleck is moored in an industrial area that was never meant to be permanent.
- She needs a real home and Lake Charles is not providing one.
  - The city of Lake Charles, which is much smaller than Jacksonville, does not have a permanent location for her.
    - Original plan was to go near the casino area, but this never happened.
  - Lake Charles population: 78,000 (and this is covering a wide area)
  - Nearby active Navy support: None.
  - Distant: New Orleans (reserve base, 220 miles away) and Corpus Christi, TX (350 miles away).

Q1: Does the organization there own the ship?

Q2: Have they been paying on their own dime to operate and maintain the museum?



A1: Yes! It was donated back from the Turkish Navy. This means the US Navy no longer owns her or has involvement.

A2: Yes, for the most part. Ticket sales, special events, and grants in the past and JHNSA currently help.

- This is a critical difference between the Orleck and other museum ships in the past that tried to come to Jacksonville.
  - The US Navy no longer owns it. Therefore they will have no involvement on the ship donation process.
  - This means the Lake Charles group will be able to donate it directly to JHNSA.
- The ship was finances were previously paid through ticket sales, grants, and other special events (like haunted ship or laser tag).
- Since COVID the museum shutdown. JHNSA has been paying the ship's insurance and for other small maintenance items.
  - Total JHNSA spent to date: \$97,917.84
    - This has covered outside contract work, insurance, supplies, trash removal, and more.

Q1: Why is the ship going to Texas for drydock?

Q2: What is the maintenance schedule?



Pictured:  
• USS Slater Museum ship in drydock last year.  
• In Albany, NY  
• Age: 77 years young! (1944)

A1: This ship needs to reach the shortest distance drydock due to USCG certifications for tow.

A2: In drydock, she will be inspected to ensure the hull integrity can be certified for museum use for up to 10 years. Next, repair work and painting from top to bottom of the outside.

- The drydock in Texas is only a 16 hour tow at most.
- Drydock may be a 3-6 week period.
- Tow to Jacksonville is 10 – 12 days.
- She must be taken to the closest location for inspection and maintenance prior to the distant tow.
- After painting she will look new again using a new advance paint formula (Juton Paint)
  - This paint lasts longer and is easier to clean (rust will hose right off).

Could the ship preservation and painting be completed here in the future?



Pictured:  
• BAE Jacksonville Shipyards with a large Arleigh Burke Destroyer in drydock.

Yes! Easily. It's just all about timing when the drydock is available. Our drydocks remain very busy thanks to the US Navy.

Someone also compared her maintenance to Navy ships in Mayport.

- This is not comparable, as those ships are underway at sea, much larger, and their maintenance cost incurs expensive engineering and computer and combat system weapons.

- Active duty US Navy ships maintenance costs are high, but that's not for the preservation. That's for the complicated engineering and weapons systems.
  - The Orleck's maintenance cost will be preservation: painting.
- In the picture is the an active Navy Arleigh Burke destroyer.
- Orleck for simple size comparison could fit inside of this DDG if it was emptied out.
- The Orleck has been designated by the USCG as a Permanently Moored Craft (PMC). (means we are a building)
  - She can not be compared to the maintenance costs of active naval ships that travel thousands of miles at sea.

Alternative disposal strategies if required? Turn into a reef?



Pictured:  
• TCG Gokova of Turkish Navy  
• Formally the USS Samuel Elliot Morison, once homeported at Naval Station Mayport.

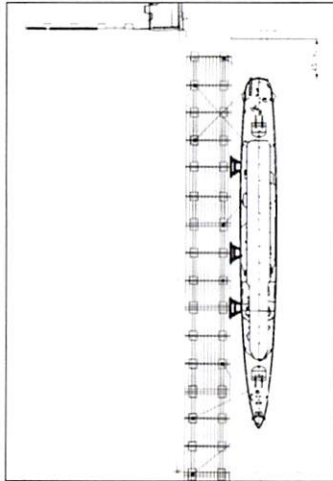
Yes! We have received towing estimates for removal. Possible reef use in future.

*BUT* we would not indeed on that course. If Orleck is no longer viable in 10 years for another 5-10 years, we would most likely scrap and bring in a new ship.

- The goal is NOT to need the towing fund and to create a successful museum.
- Scrapping the Orleck in 10-20 years would bring funding for the sale of the steel.
- This could be turned around to bring in another ship.
- There are other US Naval vessels, like that pictured that in the future come available.



Mooring plan? Can she survive hurricane force storms?



Yes! A study was conducted by SDR Analytics & Maritime, PLLC to identify the optimum “heavy weather” mooring plan.

Rated for:

- Sustained winds of 84 knots

Ship has already survived two major hurricanes that were near direct hits:

- Laura (2020), CAT 4
- Rita (2005), CAT 5

- Yes! It’s a tough Tin Can that has been in four wars and through two major hurricanes (Texas & LA)!
- It’s a British/UK, OPTIMOR system.
- Jacksonville has already had previous 100 & 500 year events.
  - There are great pictures of many shrimp boats moored to the pier riding out the storms just okay.

Is there room for event space? What could you do?



Orleck flight deck setup for military function



Boy Scout group having lunch after tour

Yes! From use of the flight deck, mess decks, wardroom, and berthing there are spaces onboard.

Planning for military reunions, Chief ceremonies, school field trips, overnight stays, haunted ship for Halloween, laser tag, and more!

- Reunion groups are already planning on events here!
  - USS Radford reunion will be 22-26 September, 2021
  - USS Orleck Association is planning May of 2022.
  - Three others have contacted us asking when the ship will be here!
- There's many of possible uses for the ship.
  - Many local active duty Vets are asking when the ship will be here so they can:
    - Have their retirements onboard
    - Have their re-enlistments onboard
    - Have their promotions onboard
    - Have their commissioning ceremony onboard
    - Have their command functions and events onboard!

How can we be confident she won't become an eyesore? A "rust bucket"?

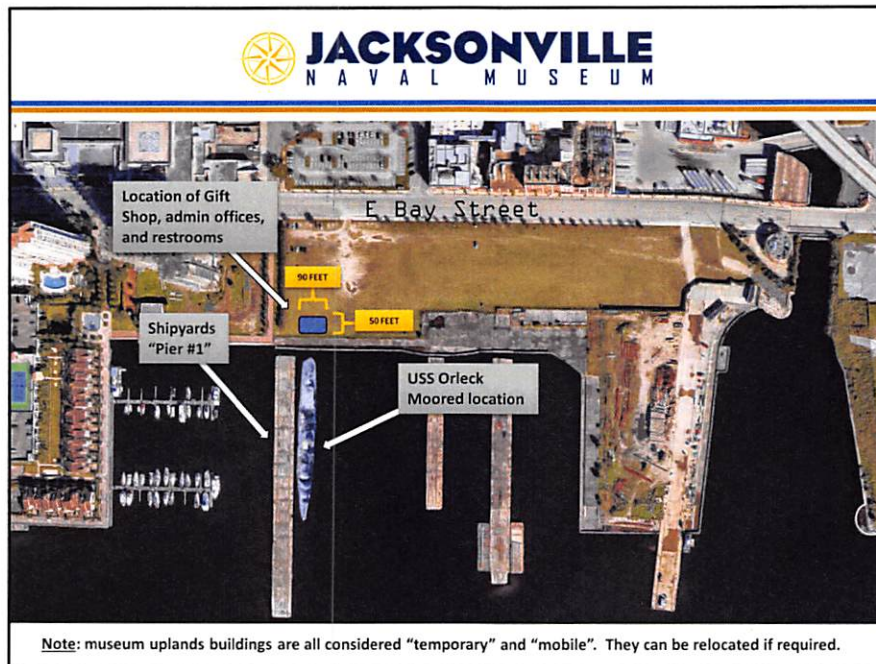


Pictured above: CPO Pride Day, Veterans Memorial Wall. 450 Active Duty Navy personnel attend this event.

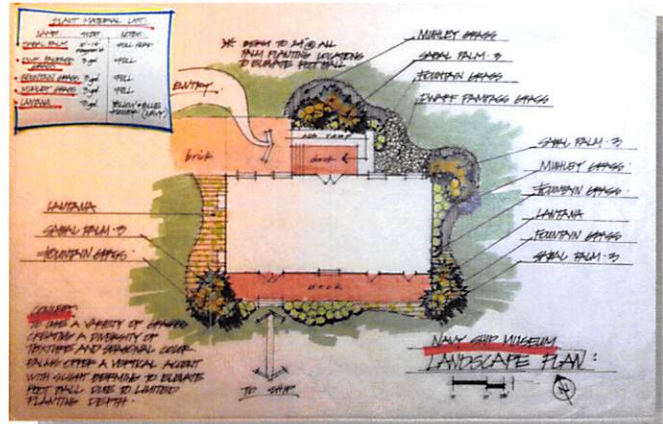
Pictured left: blue star is downtown Jacksonville, gold stars are the three local Naval Installations that are 15-40 minutes away.

There are three major naval bases within a 40 minute drive. We will have plenty of help to maintain her once she is here.

- There is a vast difference with the Orleck in Jacksonville, opposed to Lake Charles.
- Here are three large naval bases, the furthest only 40 minutes north.
- A high population of retired military and veterans remain in the area.



- There is currently a “Riverfront Activation Study” being completed by the Jesse Ball duPont Fund.
- This study includes an internationally recognized consultation firm and design team from New York City.
- Conversations with DIA have indicated a desire to create a “Hero’s Park” at this location.
  - This would include moving the Jacksonville Fire Museum
  - A building for the Naval Museum giftshop, ticketing, and bathrooms.



Landscape plan provided by Chris Flagg

- We have created landscape plans.
- We have also paid for the modular building plans.
  - That building can be seen at the top of the brief.
  - That company is in a holding pattern due to us waiting to see what happens with the Riverfront Activation Study.



### COSTS - SIMPLIFIED

Tow I (LA to TX) & Shipyard Phase 1	\$ 240,000
Shipyard Phase 2:	\$ 1,000,000
Tow II (TX to FL):	\$ 336,000
Jax Pier work:	\$ 435,000
Modular Bldg. manufacture & Delivery:	\$ 165,000
Jax Upland Work:	\$ 115,000
Tow Away Fund w/ City:	(\$ 234,500)
Ship Post Arrival Work:	\$ 50,000
Ticketing & Giftshop Setup:	\$ 27,000

Total: \$2,203,000

- In red are "paused" while Shipyards / River Front study completed
- Tow Away fund is separate account, for emergency use only.



**FUNDS - SIMPLIFIED**

Florida Historical Grant:	\$ 1,000,000 (800,000 remaining)
VyStar Fund LA to TX	\$ 240,000
VyStar LOC	\$ 1,000,000
Donations Individual/ Loans:	\$ 328,000

Total: \$ 2, 368,000

- Donations continue to come in.
- Many grants will become available once ship is here and museum programs are activated.
- AARP promising a multi-year commitment once ship is here.
- Boy Scouts are promising a commitment once ship is here
- Other local companies are promising commitments once ship is here.
- The old saying: "If you build it, they will come" applies here!

How will your museum operate for success from day one?



Pictured:  
USS Kidd Museum,  
located Baton  
Rouge, LA

We will start with a small staff and add more staff overtime as museum programs grow.

Successful museums have a strong volunteer support, we will be no different. We already have a list who want to volunteer!

- Staff will start small with critical positions needed first.
- Onboard, visitors will travel topside spaces and above the ship on self guided tours.
- Volunteer docents will be posted at key locations on the ship for visitors to ask questions and learn from.
- Will grow strategically as museum programs come on line, grants are executed, and financial operating picture shapes.
- An example of strategic hiring and growth:
  - General Manager (full time)
  - Assistant Manger (part time)
  - Certified Financial Professional (part time)
- Additional hires as museum grows:
  - Volunteer coordinator (part time) – this will first be a volunteer position turned future hire / staff.
  - Ship Super Intendant (ship's engineer) (part time) – this will first be a volunteer position turned future hire / staff.
  - Ticketing and giftshop sales (two full, two part)
  - Marketing



Do you know what is pictured in the old photo below?



This is the MoSH, when it first started out as a Children's Museum from a house.

Every museum starts somewhere. We need the city to be bold and give us our chance to start to see what we can do.

- We are getting a great start to the Jacksonville Naval Museum with a great center piece in the USS Orleck!
- There's endless possibilities of where we could go in the future as a Naval Museum.
- Just look at the MoSH!
- It's time to be Bold, time to try something new, it's time to honor our Naval heritage here!

 **JACKSONVILLE**  
NAVAL MUSEUM

<p><i>For more information, please visit our website at:</i> <a href="http://jaxnavalmuseum.org">jaxnavalmuseum.org</a></p>	<p><i>Follow us on Social Media for Museum news &amp; updates! #JaxNavalMuseum</i></p> <p style="text-align: center;">  </p>
---	--

 *"It's time for a Bold new addition..."*



*Thank you for your time!*

- There are great virtual tours setup on our website of the ship.
- Large, positive public engagement via social media.