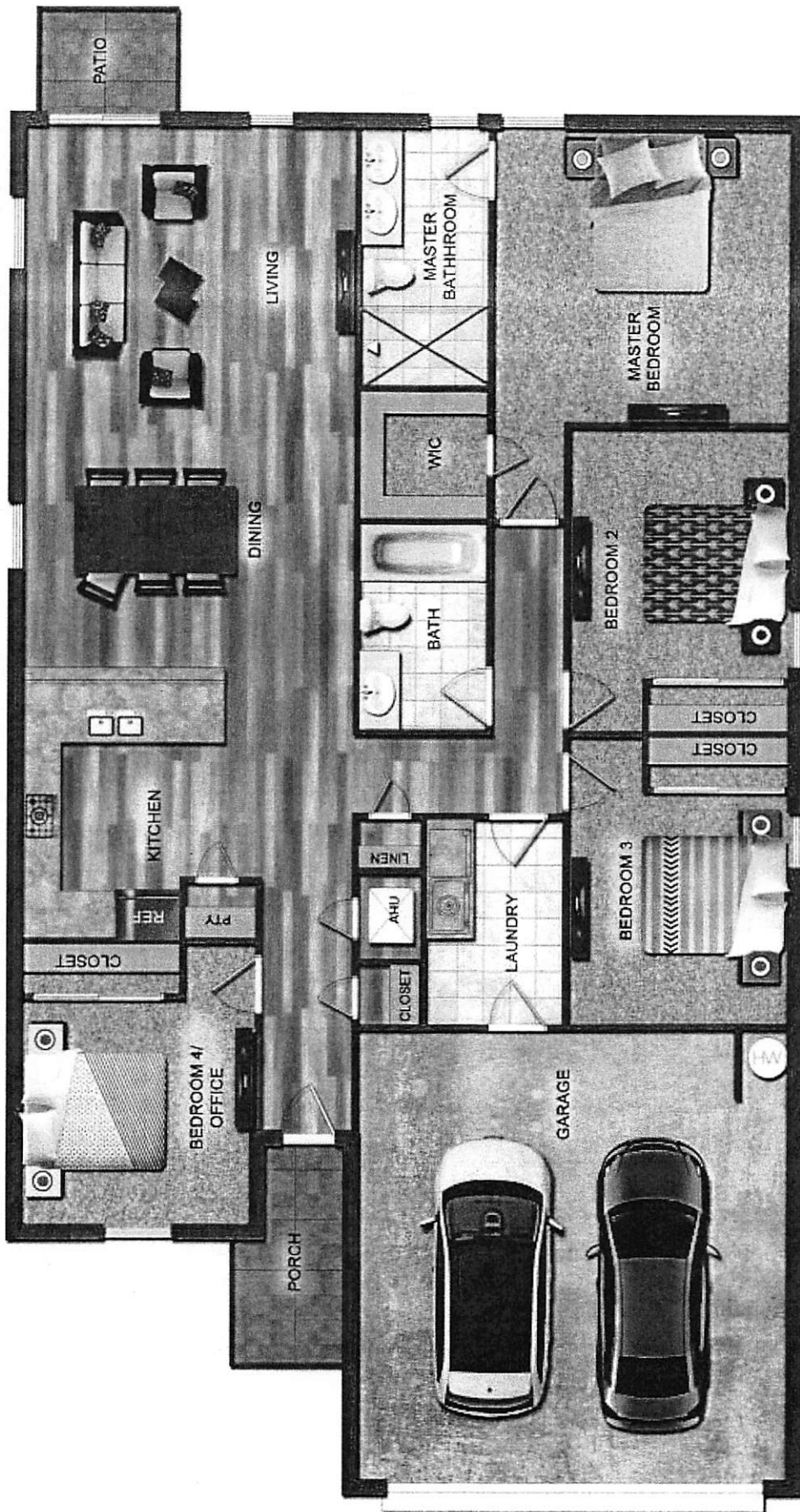


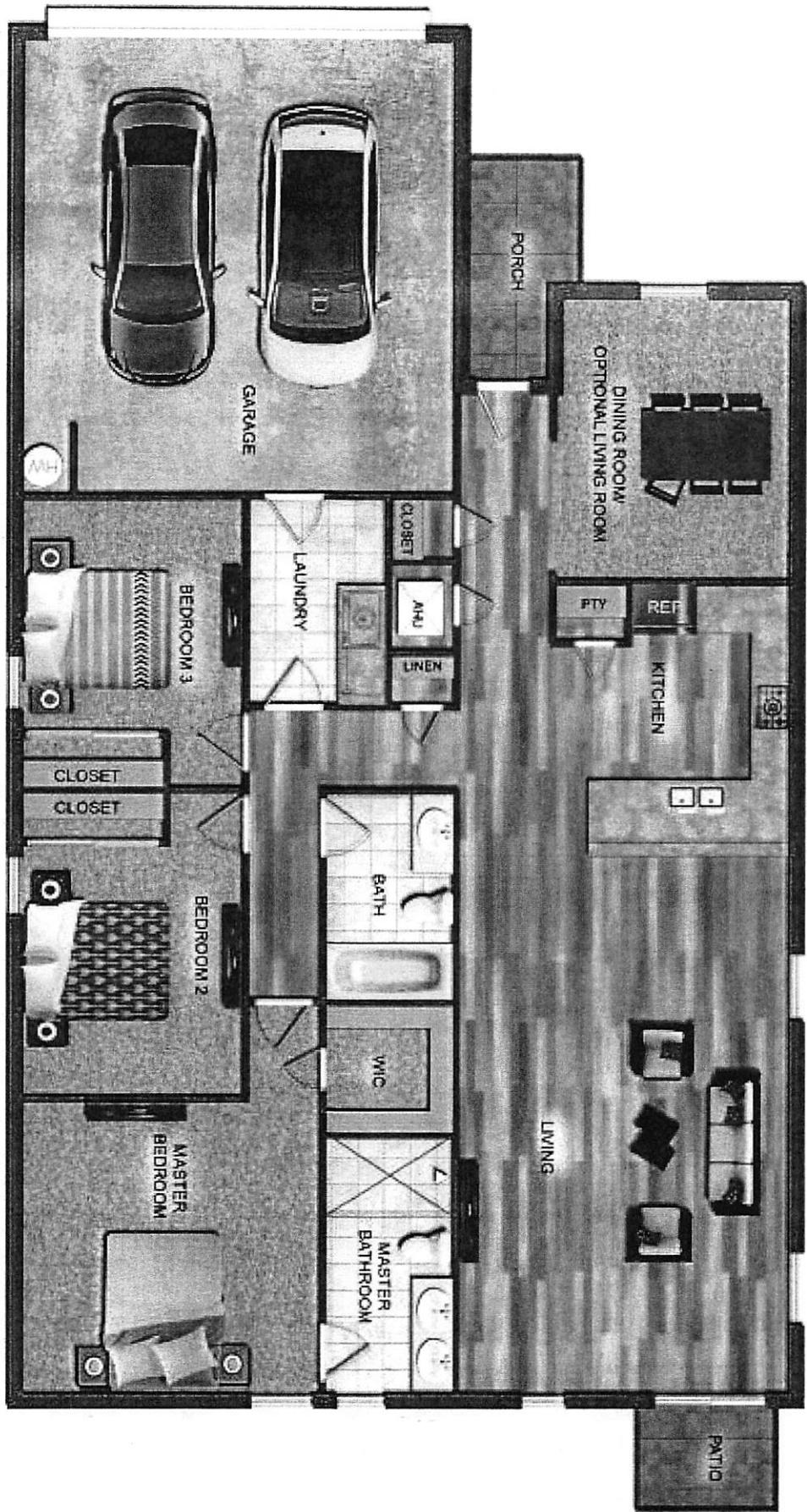




MAP OF SURROUNDING DEVELOPMENT

| Map number | Zoning          | Description   |
|------------|-----------------|---|
| 1          | RMD-D 1970      | Multifamily apartments                                |
| 2          | RLD-60 1970s    | Single family residential<br>60 foot<br>6,000 sf      |
| 3          | RMD-D 1986      | Conventional<br>Townhomes<br>15 foot lots<br>1,500 sf |
| 4          | RLD-60 1991     | Single family<br>60 foot<br>6,000 sf                  |
| 5          | PUD 1998-491    | Single family<br>50 foot<br>5,000 sf                  |
| 6          | PUD 1999-661    | Single family<br>38 foot lots<br>3,500 sf             |
| 7          | PUD 2000-1049   | Single family<br>60 foot<br>6,000 sf                  |
| 8          | PUD 2003-887    | Single family<br>50 foot<br>5,000 sf                  |
| 9          | PUD 2004-18     | Commercial<br>RV and boat repair and parking          |
| 10         | PUD 2019-636    | Quadraplexes<br>One 60 ft lot/4 units<br>1,500 sf     |
| 11         | Proposed RLD-40 | Single family<br>40 foot<br>4,000 sf                  |







©2013 RE/MAX, Inc.

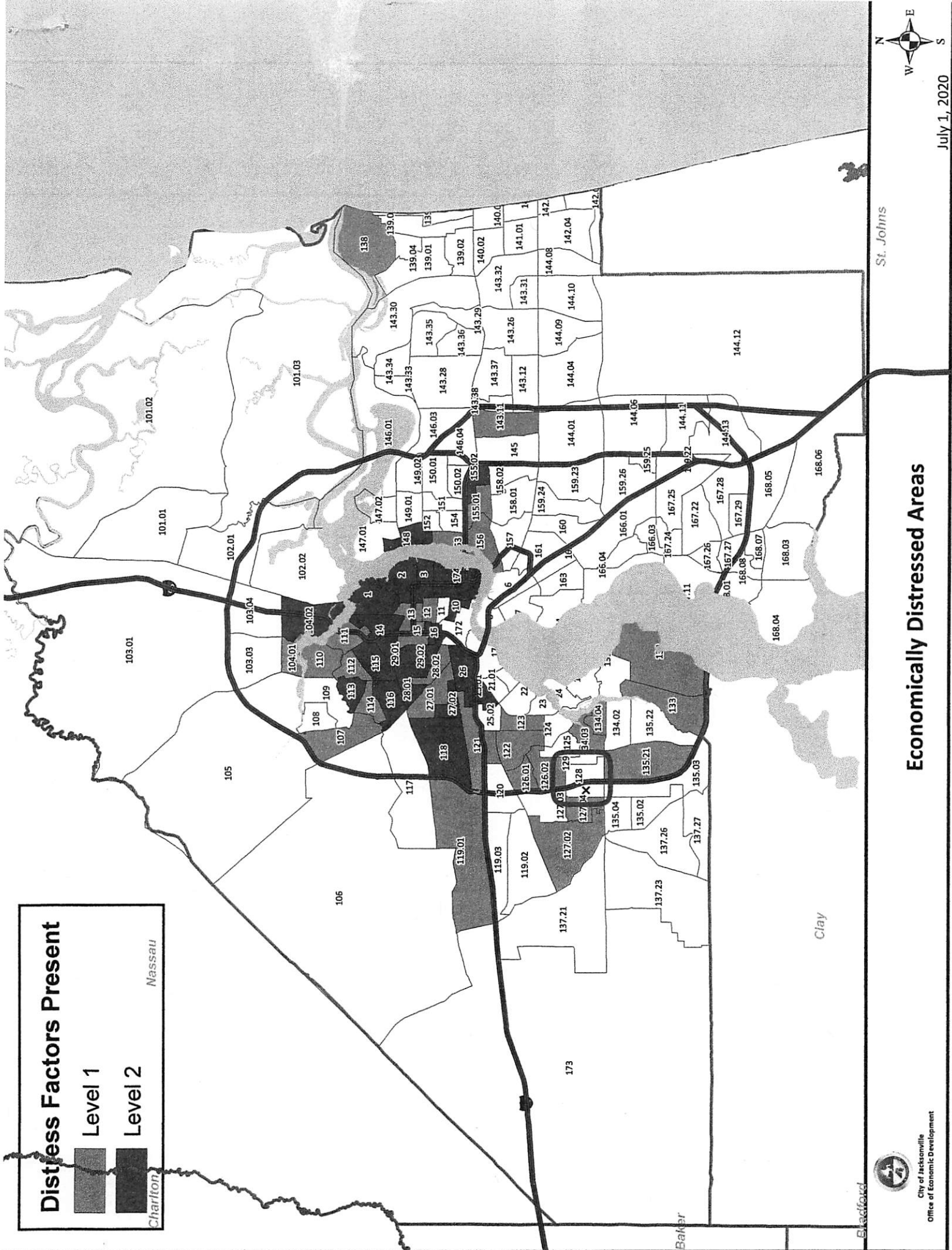


# Distress Factors Present

- Level 1
- Level 2

Charlton

Nassau



July 1, 2020

## Economically Distressed Areas

St. Johns

Clay

Baker

Bluffton



City of Jacksonville  
Office of Economic Development



# Land Development Review

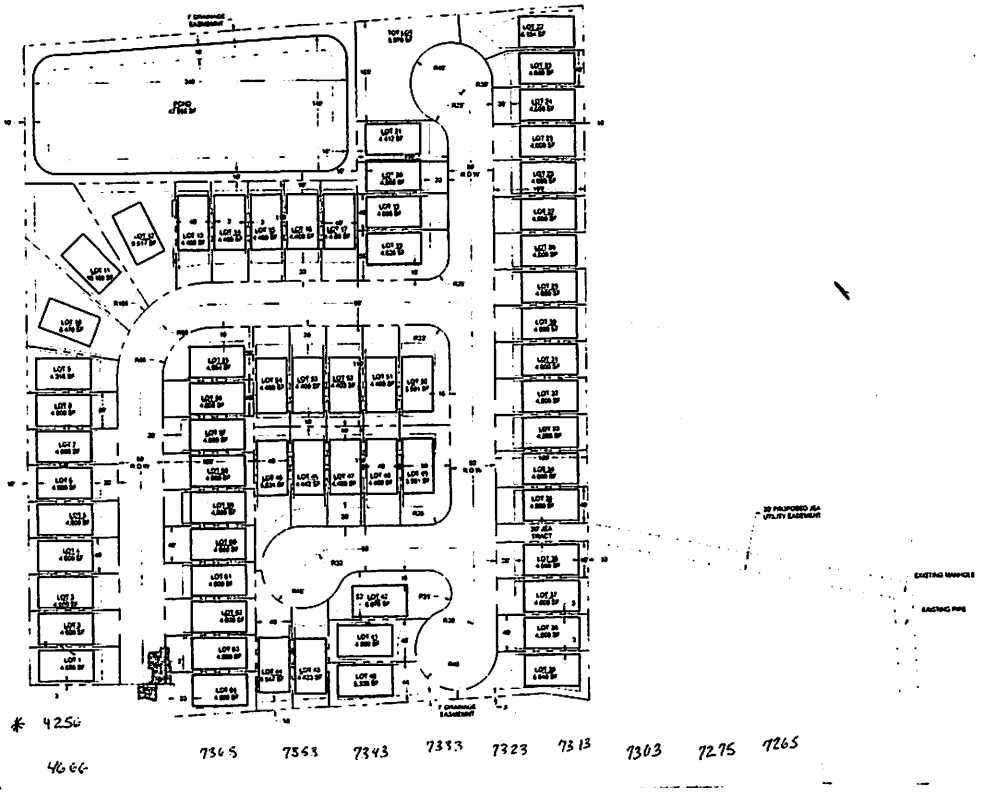
PBF-1

1450

2020-081  
2020-087

|      |      |      |      |      |      |      |      |
|------|------|------|------|------|------|------|------|
| 7457 | 7449 | 7439 | 7431 | 7421 | 7411 | 7403 | 4101 |
| 4102 |      |      |      |      |      |      | 4107 |
| 4110 | 4105 | 7438 | 7428 | 7418 | 4108 |      | 4113 |
| 4118 |      |      |      |      |      |      | 4121 |
| 7505 | 7467 | 7457 | 7449 | 7437 | 4120 |      | 4135 |
|      |      |      |      |      |      |      | 4203 |
|      |      |      |      |      |      |      | 4206 |
| 7514 | 4203 | 7464 | 4205 | 4206 |      |      | 4213 |
| 4216 | 4213 | 4220 | 4219 | 4218 |      |      | 4223 |
| 4228 | 4221 | 4230 | 4229 | 4230 |      |      | 4233 |
| 4238 | 4231 | 4240 | 4239 | 4238 |      |      | 4243 |
|      | 4250 |      | 4249 | 4248 |      |      |      |

RLD-60



February 28, 2021

Parcels

Zoning

Parcels For Notice

Sources: Esri, HERE, Garmin, USGS, Intermap, INCREMENT P, NRCan, Esri Japan, METI, Esri China (Hong Kong), Esri Korea, Esri (Thailand),