

# MAP SHOWING SKETCH & LEGAL DESCRIPTION OF

A PART OF SECTION 32, TOWNSHIP 1 NORTH, RANGE 26 EAST, CITY OF JACKSONVILLE, DUVAL COUNTY, FLORIDA. BEING MORE PARTICULARLY DESCRIBED AS FOLLOWS:

COMMENCE AT THE SOUTHEAST CORNER OF SAID SECTION 32, THENCE NORTH 00°05'11" WEST, ALONG THE EAST LINE OF SAID SECTION 32, A DISTANCE OF 1906.70 FEET TO AN ANGLE POINT IN SAID EAST LINE AND THE POINT OF BEGINNING; THENCE NORTH 00°02'13" WEST, CONTINUING ALONG SAID EAST LINE, A DISTANCE OF 858.48 FEET; THENCE SOUTH 89°34'54" WEST, DEPARTING SAID EAST LINE, A DISTANCE OF 4.23 FEET TO A POINT OF CURVATURE OF A CURVE BEING CONCAVE NORTHERLY AND HAVING A RADIUS OF 360.00 FEET; THENCE WESTERLY, ALONG LAST SAID CURVE, AN ARC DISTANCE OF 193.53 FEET, LAST SAID ARC BEING SUBTENDED BY A CHORD BEARING OF NORTH 75°01'04" WEST AND A CHORD DISTANCE OF 191.21 FEET TO A POINT OF TANGENCY OF LAST SAID CURVE; THENCE NORTH 59°37'02" WEST, A DISTANCE OF 121.72 FEET TO A POINT OF CURVATURE OF A CURVE BEING CONCAVE SOUTHERLY AND HAVING A RADIUS OF 440.00 FEET; THENCE WESTERLY, ALONG LAST SAID CURVE, AN ARC DISTANCE OF 254.29 FEET, LAST SAID ARC BEING SUBTENDED BY A CHORD BEARING OF NORTH 76°10'25" WEST AND A CHORD DISTANCE OF 250.76 FEET TO A POINT OF NON-TANGENCY OF LAST SAID CURVE; THENCE NORTH 21°21'51" WEST, A DISTANCE OF 482.11 FEET; THENCE NORTH 00°00'00" EAST, A DISTANCE OF 330.31 FEET; THENCE NORTH 19°19'57" WEST, A DISTANCE OF 373.64 FEET; THENCE NORTH 00°00'00" EAST, A DISTANCE OF 628.70 FEET TO A POINT ON THE NORTH LINE OF SAID SECTION 32; THENCE NORTH 07°11'58" WEST, ALONG SAID NORTH LINE, A DISTANCE OF 1587.64 FEET TO AN ANGLE POINT IN SAID NORTH LINE; THENCE SOUTH 88°50'28" WEST, CONTINUING ALONG SAID NORTH LINE, A DISTANCE OF 509.30 FEET; THENCE SOUTH 17°25'11" WEST, DEPARTING SAID NORTH LINE, A DISTANCE OF 459.07 FEET; SOUTH 34°08'15" EAST, A DISTANCE OF 190.09 FEET; THENCE SOUTH 77°54'37" EAST, A DISTANCE OF 133.33 FEET; THENCE NORTH 84°17'28" EAST, A DISTANCE OF 22.73 FEET; THENCE NORTH 76°03'29" EAST, A DISTANCE OF 7.24 FEET; THENCE SOUTH 78°05'11" EAST, A DISTANCE OF 145.07 FEET; THENCE SOUTH 61°11'37" EAST, A DISTANCE OF 89.89 FEET; THENCE SOUTH 54°23'44" EAST, A DISTANCE OF 102.26 FEET; THENCE SOUTH 43°45'06" EAST, A DISTANCE OF 99.59 FEET TO A POINT OF NON-TANGENCY OF A CURVE BEING CONCAVE EASTERLY AND HAVING A RADIUS OF 30.00 FEET; THENCE SOUTHERLY, ALONG LAST SAID CURVE, AN ARC DISTANCE OF 36.81 FEET, LAST SAID ARC BEING SUBTENDED BY A CHORD BEARING OF SOUTH 11°35'43" WEST AND A CHORD DISTANCE OF 34.55 FEET TO A POINT OF REVERSE CURVATURE OF A CURVE BEING CONCAVE WESTERLY AND HAVING A RADIUS OF 350.00 FEET; THENCE SOUTHERLY, ALONG LAST SAID CURVE, AN ARC DISTANCE OF 141.39 FEET, LAST SAID ARC BEING SUBTENDED BY A CHORD BEARING OF SOUTH 11°59'10" EAST AND A CHORD DISTANCE OF 140.43 FEET TO A POINT OF TANGENCY OF LAST SAID CURVE; THENCE SOUTH 00°24'48" EAST, A DISTANCE OF 858.40 FEET TO A POINT OF CURVATURE OF A CURVE BEING CONCAVE NORTHEASTERLY AND HAVING A RADIUS OF 30.00 FEET; THENCE SOUTHEASTERLY, ALONG LAST SAID CURVE, AN ARC DISTANCE OF 54.17 FEET, LAST SAID ARC BEING SUBTENDED BY A CHORD BEARING OF SOUTH 52°08'38" EAST AND A CHORD DISTANCE OF 47.11 FEET TO A POINT OF NON-TANGENCY OF LAST SAID CURVE; THENCE SOUTH 62°34'35" WEST, A DISTANCE OF 41.51 FEET; THENCE SOUTH 89°35'12" WEST, A DISTANCE OF 120.00 FEET; THENCE SOUTH 00°24'48" EAST, A DISTANCE OF 176.22 FEET; THENCE SOUTH 89°35'12" WEST, A DISTANCE OF 60.00 FEET; THENCE SOUTH 00°24'48" EAST, A DISTANCE OF 10.00 FEET TO A POINT OF CURVATURE OF A CURVE BEING CONCAVE NORTHWESTERLY AND HAVING A RADIUS OF 25.00 FEET; THENCE SOUTHWESTERLY, ALONG LAST SAID CURVE, AN ARC DISTANCE OF 39.27 FEET, LAST SAID ARC BEING SUBTENDED BY A CHORD BEARING OF SOUTH 44°35'12" WEST AND A CHORD DISTANCE OF 35.36 FEET TO A POINT OF TANGENCY OF LAST SAID CURVE; THENCE SOUTH 89°35'12" WEST, A DISTANCE OF 95.00 FEET; THENCE NORTH 00°24'48" WEST, A DISTANCE OF 470.00 FEET; THENCE SOUTH 89°35'12" WEST, A DISTANCE OF 120.00 FEET; THENCE NORTH 00°24'48" WEST, A DISTANCE OF 13.12 FEET; THENCE SOUTH 89°35'12" WEST, A DISTANCE OF 60.00 FEET; THENCE SOUTH 89°39'23" WEST, A DISTANCE OF 141.59 FEET; THENCE NORTH 10°00'32" EAST, A DISTANCE OF 60.30 FEET; THENCE NORTH 72°47'38" WEST, A DISTANCE OF 188.89 FEET TO A POINT OF NON-TANGENCY OF A CURVE BEING CONCAVE WESTERLY AND HAVING A RADIUS OF 520.00 FEET; THENCE SOUTHERLY, ALONG LAST SAID CURVE, AN ARC DISTANCE OF 38.71 FEET, LAST SAID ARC BEING SUBTENDED BY A CHORD BEARING OF SOUTH 19°20'20" WEST AND A CHORD DISTANCE OF 38.70 FEET TO A POINT OF NON-TANGENCY OF LAST SAID CURVE; THENCE NORTH 68°31'42" WEST, A DISTANCE OF 275.73 FEET; THENCE NORTH 86°05'41" WEST, A DISTANCE OF 117.63 FEET; THENCE SOUTH 07°15'38" EAST, A DISTANCE OF 423.71 FEET; THENCE SOUTH 89°55'40" WEST, A DISTANCE OF 131.89 FEET; THENCE SOUTH 29°18'27" WEST, A DISTANCE OF 10.95 FEET TO A POINT OF NON-TANGENCY OF A CURVE BEING CONCAVE SOUTHERLY AND HAVING A RADIUS OF 30.00 FEET; THENCE WESTERLY, ALONG LAST SAID CURVE, AN ARC DISTANCE OF 55.38 FEET, LAST SAID ARC BEING SUBTENDED BY A CHORD BEARING OF SOUTH 69°25'31" WEST AND A CHORD DISTANCE OF 47.84 FEET TO A POINT OF REVERSE CURVATURE OF A CURVE BEING CONCAVE WESTERLY AND HAVING A RADIUS OF 165.00 FEET; THENCE SOUTHERLY, ALONG LAST SAID CURVE, AN ARC DISTANCE OF 51.87 FEET, LAST SAID ARC BEING SUBTENDED BY A CHORD BEARING OF SOUTH 25°32'51" WEST AND A CHORD DISTANCE OF 51.65 FEET TO A POINT OF REVERSE CURVATURE OF A CURVE BEING CONCAVE EASTERLY AND HAVING A RADIUS OF 100.00 FEET;

(LEGAL DESCRIPTION CONTINUED ON SHEET 2)

(SEE SHEET 3 FOR SKETCH)

(SEE SHEET 4 FOR TABULATED LINE AND CURVE INFORMATION)

SHEET 1 OF 4

## PERRET AND ASSOCIATES, INC.

1484 MONTICELLO ROAD, JACKSONVILLE, FLORIDA 32207 ~ (904) 805-0030 ~ FAX (904) 805-9898

**GENERAL NOTES:**

- (1) BEARINGS SHOWN HEREON ARE BASED ON THE EAST LINE OF SECTION 32 AS N00°02'13"E, PER NAD83 (2011) FLORIDA STATE PLANE, EAST ZONE COORDINATES.
- (2) THIS SKETCH DOES NOT PURPORT TO BE A BOUNDARY SURVEY.
- (3) UNDERGROUND UTILITIES SERVING THIS PROPERTY HAVE NOT BEEN LOCATED OR SHOWN.
- (4) IT IS THE LENDER'S RESPONSIBILITY TO DETERMINE PEMA F.L.R.M. MAP STATUS FOR THE LIFE OF THE LOAN ON THE PROPERTY SHOWN ABOVE. SURVEYOR HEREON WILL CONFIRM FOR ADDITIONAL FEE.

- |        |                              |
|--------|------------------------------|
| P.C.   | POINT OF CURVATURE           |
| P.T.   | POINT OF TANGENCY            |
| P.R.C. | POINT OF REVERSE CURVE       |
| P.C.C. | POINT OF COMPOUND CURVE      |
| P.O.C. | POINT ON CURVE               |
| P.R.M. | PERMANENT REFERENCE MONUMENT |
| P.C.P. | PERMANENT CONTROL POINT      |
| B.R.L. | BUILDING RESTRICTION LINE    |
| C.F.   | CHAIN LINK FENCE             |
| R.W.   | RIGHT-OF-WAY                 |
| O.R.B. | OFFICIAL RECORDS BOOK        |
| O.L.   | ON LINE                      |
| B.L.   | BREAK LINE                   |

SCALE 1"=600'

04-15-2022

DATE OF SKETCH

**LEGEND**

Δ	DELTA (CENTRAL ANGLE)
ℓ	ARC LENGTH
ℓ <sub>c</sub>	CHORD
CB	CHORD BEARING
(R)	RADIUS
ℓ <sub>r</sub>	LINE RADIAL TO CURVE
ℓ <sub>c</sub>	LINE CONDITIONER
CONC	CONCRETE
FOUND	FOUND
FD	IRON PIPE
IP	MEASURED
(M)	DEED
(D)	FENCE

*Nathan P. Perret*



LB ~ 6715

NATHAN P. PERRET, FLA. CERT. NO.: 6900

F.B. - PG. -

NOT VALID WITHOUT THE SIGNATURE & ORIGINAL RAISED SEAL OF A FLORIDA LICENSED SURVEYOR & MAPPER ORDER NO.

2021-2503-14

# MAP SHOWING SKETCH & LEGAL DESCRIPTION OF

(LEGAL DESCRIPTION CONTINUED FROM SHEET 1)

THENCE SOUTHERLY, ALONG LAST SAID CURVE, AN ARC DISTANCE OF 60.43 FEET, LAST SAID ARC BEING SUBTENDED BY A CHORD BEARING OF SOUTH 17°14'25" WEST AND A CHORD DISTANCE OF 59.52 FEET TO A POINT OF TANGENCY OF LAST SAID CURVE; THENCE SOUTH 00°04'20" EAST, A DISTANCE OF 302.95 FEET TO A POINT OF CURVATURE OF A CURVE BEING CONCAVE NORTHEASTERLY AND HAVING A RADIUS OF 30.00 FEET; THENCE SOUTHEASTERLY, ALONG LAST SAID CURVE, AN ARC DISTANCE OF 38.29 FEET, LAST SAID ARC BEING SUBTENDED BY A CHORD BEARING OF SOUTH 36°38'25" EAST AND A CHORD DISTANCE OF 35.75 FEET TO A POINT OF NON-TANGENCY OF LAST SAID CURVE; THENCE SOUTH 00°24'48" EAST, A DISTANCE OF 132.98 FEET TO A POINT OF NON-TANGENCY OF A CURVE BEING CONCAVE NORTHWESTERLY AND HAVING A RADIUS OF 470.00 FEET; THENCE SOUTHWESTERLY, ALONG LAST SAID CURVE, AN ARC DISTANCE OF 29.46 FEET, LAST SAID ARC BEING SUBTENDED BY A CHORD BEARING OF SOUTH 70°29'49" WEST AND A CHORD DISTANCE OF 29.46 FEET TO A POINT OF NON-TANGENCY OF LAST SAID CURVE; THENCE SOUTH 17°42'26" EAST, A DISTANCE OF 60.00 FEET; THENCE SOUTH 00°24'48" EAST, A DISTANCE OF 126.30 FEET TO A POINT OF NON-TANGENCY OF A CURVE BEING CONCAVE SOUTHEASTERLY AND HAVING A RADIUS OF 30.00 FEET; THENCE SOUTHWESTERLY, ALONG LAST SAID CURVE, AN ARC DISTANCE OF 29.34 FEET, LAST SAID ARC BEING SUBTENDED BY A CHORD BEARING OF SOUTH 27°56'36" WEST AND A CHORD DISTANCE OF 28.18 FEET TO A POINT OF TANGENCY OF LAST SAID CURVE; THENCE SOUTH 00°04'20" EAST, A DISTANCE OF 1412.52 FEET TO A POINT OF CURVATURE OF A CURVE BEING CONCAVE NORTHEASTERLY AND HAVING A RADIUS OF 30.00 FEET; THENCE SOUTHEASTERLY, ALONG LAST SAID CURVE, AN ARC DISTANCE OF 47.12 FEET, LAST SAID ARC BEING SUBTENDED BY A CHORD BEARING OF SOUTH 45°04'20" EAST, AND A CHORD DISTANCE OF 42.43 FEET TO A POINT OF TANGENCY OF LAST SAID CURVE; THENCE NORTH 89°55'40" EAST, A DISTANCE OF 106.89 FEET TO A POINT OF CURVATURE OF A CURVE BEING CONCAVE NORTHWESTERLY AND HAVING A RADIUS OF 30.00 FEET; THENCE NORTHEASTERLY, ALONG LAST SAID CURVE, AN ARC DISTANCE OF 34.94 FEET, LAST SAID ARC BEING SUBTENDED BY A CHORD BEARING OF NORTH 56°33'57" EAST AND A CHORD DISTANCE OF 33.00 FEET TO A POINT OF NON-TANGENCY OF LAST SAID CURVE; THENCE SOUTH 66°47'47" EAST, A DISTANCE OF 184.67 FEET TO A POINT OF NON-TANGENCY OF A CURVE BEING CONCAVE SOUTHEASTERLY AND HAVING A RADIUS OF 30.00 FEET; THENCE NORTHEASTERLY, ALONG LAST SAID CURVE, AN ARC DISTANCE OF 34.76 FEET, LAST SAID ARC BEING SUBTENDED BY A CHORD BEARING OF NORTH 56°23'43" EAST AND A CHORD DISTANCE OF 32.85 FEET TO A POINT OF TANGENCY OF LAST SAID CURVE; THENCE NORTH 89°35'12" EAST, A DISTANCE OF 192.66 FEET TO A POINT OF CURVATURE OF A CURVE BEING CONCAVE SOUTHWESTERLY AND HAVING A RADIUS OF 30.00 FEET; THENCE SOUTHEASTERLY, ALONG LAST SAID CURVE, AN ARC DISTANCE OF 34.72 FEET, LAST SAID ARC BEING SUBTENDED BY A CHORD BEARING OF SOUTH 57°15'39" EAST AND A CHORD DISTANCE OF 32.81 FEET TO A POINT OF NON-TANGENCY OF LAST SAID CURVE; THENCE NORTH 65°53'29" EAST, A DISTANCE OF 193.28 FEET TO A POINT OF NON-TANGENCY OF A CURVE BEING CONCAVE NORTHEASTERLY AND HAVING A RADIUS OF 30.00 FEET; THENCE SOUTHEASTERLY, ALONG LAST SAID CURVE, AN ARC DISTANCE OF 34.72 FEET, LAST SAID ARC BEING SUBTENDED BY A CHORD BEARING OF SOUTH 57°15'39" EAST AND A CHORD DISTANCE OF 32.81 FEET TO A POINT OF TANGENCY OF LAST SAID CURVE; THENCE NORTH 89°35'12" EAST, A DISTANCE OF 104.04 FEET TO A POINT OF CURVATURE OF A CURVE BEING CONCAVE NORTHWESTERLY AND HAVING A RADIUS OF 30.00 FEET; THENCE NORTHEASTERLY, ALONG LAST SAID CURVE, AN ARC DISTANCE OF 47.12 FEET, LAST SAID ARC BEING SUBTENDED BY A CHORD BEARING OF NORTH 44°35'12" EAST AND A CHORD DISTANCE OF 42.43 FEET TO A POINT OF TANGENCY OF LAST SAID CURVE; THENCE NORTH 00°24'48" WEST, A DISTANCE OF 921.40 FEET TO A POINT OF CURVATURE OF A CURVE BEING CONCAVE SOUTHEASTERLY AND HAVING A RADIUS OF 165.00 FEET; THENCE NORTHEASTERLY, ALONG LAST SAID CURVE, AN ARC DISTANCE OF 314.69 FEET, LAST SAID ARC BEING SUBTENDED BY A CHORD BEARING OF NORTH 54°13'29" EAST AND A CHORD DISTANCE OF 269.12 FEET TO A POINT OF REVERSE CURVATURE OF A CURVE BEING CONCAVE NORTHERLY AND HAVING A RADIUS OF 200.00 FEET; THENCE EASTERLY, ALONG LAST SAID CURVE, AN ARC DISTANCE OF 67.29 FEET, LAST SAID ARC BEING SUBTENDED BY A CHORD BEARING OF SOUTH 80°46'31" EAST AND A CHORD DISTANCE OF 66.97 FEET TO A POINT OF TANGENCY OF LAST SAID CURVE; THENCE NORTH 89°35'12" EAST, A DISTANCE OF 388.71 FEET TO A POINT OF CURVATURE OF A CURVE BEING CONCAVE NORTHWESTERLY AND HAVING A RADIUS OF 47.12 FEET; THENCE NORTHEASTERLY, ALONG LAST SAID CURVE, AN ARC DISTANCE OF 47.12 FEET, LAST SAID ARC BEING SUBTENDED BY A CHORD BEARING OF NORTH 44°35'12" EAST AND A CHORD DISTANCE OF 42.43 FEET TO A POINT OF TANGENCY OF LAST SAID CURVE; THENCE NORTH 00°24'48" WEST, A DISTANCE OF 50.45 FEET; THENCE NORTH 89°35'12" EAST, A DISTANCE OF 180.00 FEET; THENCE NORTH 00°24'48" WEST, A DISTANCE OF 9.51 FEET; THENCE NORTH 89°35'12" EAST, A DISTANCE OF 120.00 FEET; THENCE SOUTH 00°24'48" EAST, A DISTANCE OF 30.31 FEET TO A POINT OF CURVATURE OF A CURVE BEING CONCAVE EASTERLY AND HAVING A RADIUS OF 35.00 FEET; THENCE SOUTHERLY, ALONG LAST SAID CURVE, AN ARC DISTANCE OF 19.54 FEET, LAST SAID ARC BEING SUBTENDED BY A CHORD BEARING OF SOUTH 16°24'32" EAST AND A CHORD DISTANCE OF 19.29 FEET TO A POINT OF TANGENCY OF LAST SAID CURVE; THENCE SOUTH 32°24'16" EAST, A DISTANCE OF 37.12 FEET; THENCE SOUTH 68°26'08" EAST, A DISTANCE OF 565.26 FEET; THENCE SOUTH 75°03'06" EAST, A DISTANCE OF 733.76 FEET; THENCE NORTH 89°48'00" EAST, A DISTANCE OF 449.70 FEET TO THE POINT OF BEGINNING.

SAID LANDS CONTAINING 187.33 ACRES, MORE OR LESS.

(SEE SHEET 3 FOR SKETCH)

(SEE SHEET 4 FOR TABULATED LINE AND CURVE INFORMATION)

SHEET 2 OF 4

## PERRET AND ASSOCIATES, INC.

1484 MONTICELLO ROAD, JACKSONVILLE, FLORIDA 32207 ~ (904) 805-0030 ~ FAX (904) 805-9888

### GENERAL NOTES:

- (1) BEARINGS SHOWN HEREON ARE BASED ON THE EAST LINE OF SECTION 32 AS N00°02'13"E, PER NAD83 (2011) FLORIDA STATE PLANE, EAST ZONE COORDINATES.
- (2) THIS SKETCH DOES NOT PURPORT TO BE A BOUNDARY SURVEY.
- (3) UNDERGROUND UTILITIES SERVING THIS PROPERTY HAVE NOT BEEN LOCATED OR SHOWN.
- (4) IT IS THE LENDER'S RESPONSIBILITY TO DETERMINE FEMA F.I.R.M. MAP STATUS FOR THE LIFE OF THE LOAN ON THE PROPERTY SHOWN ABOVE. SURVEYOR HEREON WILL CONFIRM FOR ADDITIONAL FEE.

P.C.	POINT OF CURVATURE
P.T.	POINT OF TANGENCY
P.R.C.	POINT OF REVERSE CURVE
P.C.C.	POINT OF COMPOUND CURVE
P.O.C.	POINT ON CURVE
P.R.M.	PERMANENT REFERENCE MONUMENT
P.C.P.	PERMANENT CONTROL POINT
B.R.L.	BUILDING RESTRICTION LINE
CLF	CHAIN LINK FENCE
R/W	RIGHT-OF-WAY
O.R.B.	OFFICIAL RECORDS BOOK
O/L	ON LINE
— —	BREAK LINE

### LEGEND

R	RADIUS
Δ or D	DELTA (CENTRAL ANGLE)
A or L	ARC LENGTH
C or CH	CHORD
CB	CHORD BEARING
(R)	LINE RADIAL TO CURVE
A/C	AIR CONDITIONER
CONC.	CONCRETE
FD.	FOUND
I.P.	IRON PIPE
(M)	MEASURED
(D)	DEED
— —	FENCE



SCALE 1"=600'

04-15-2022

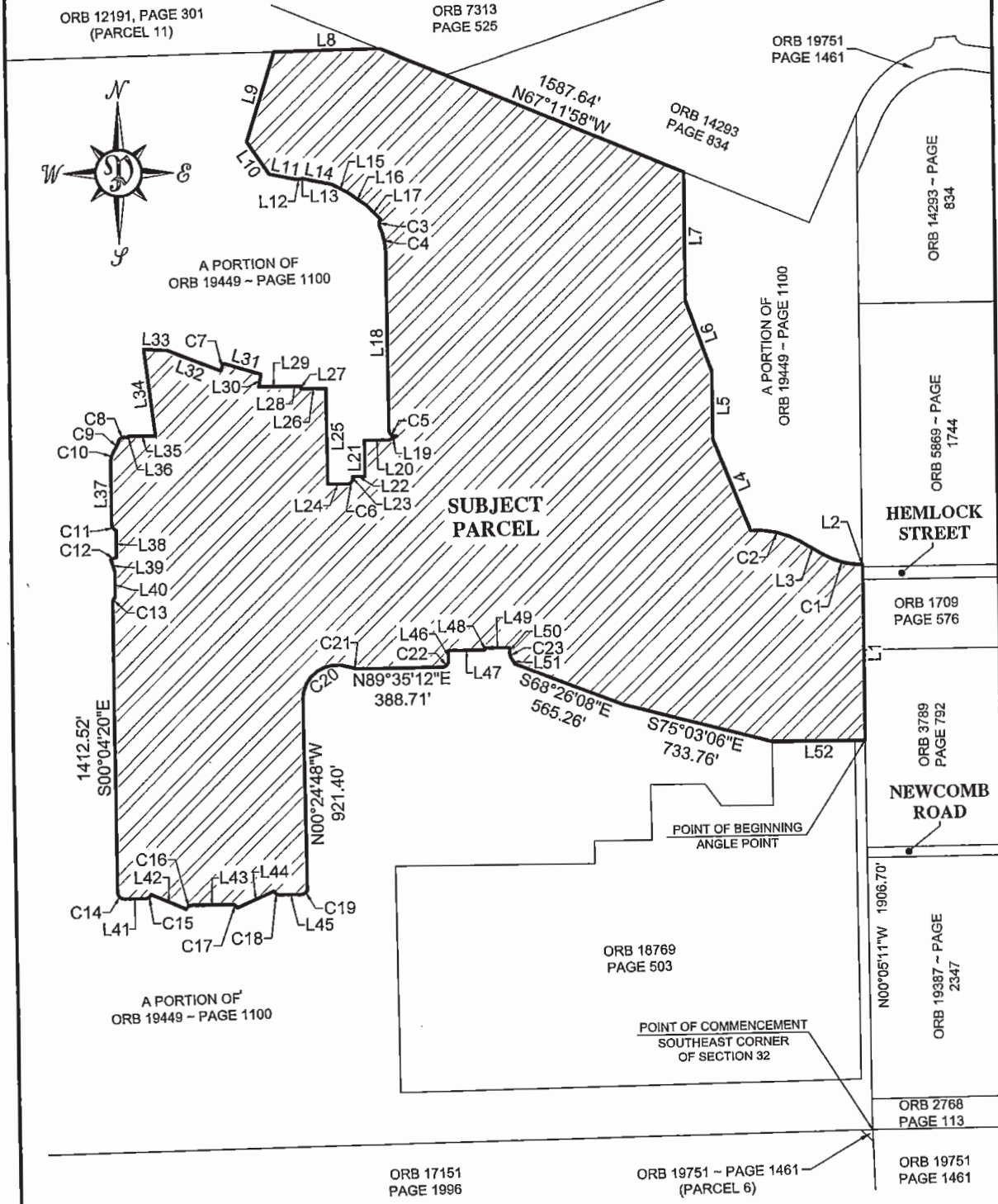
DATE OF SKETCH

LB ~ 6715

# MAP SHOWING SKETCH & LEGAL DESCRIPTION OF

A PART OF SECTION 32, TOWNSHIP 1 NORTH, RANGE 26 EAST, CITY OF JACKSONVILLE, DUVAL COUNTY, FLORIDA  
(SEE SHEET 1 & 2 FOR COMPLETE DESCRIPTION)

(SEE SHEET 4 FOR TABULATED LINE AND CURVE INFORMATION)



SHEET 3 OF 4

## PERRET AND ASSOCIATES, INC.

1484 MONTICELLO ROAD, JACKSONVILLE, FLORIDA 32207 ~ (904) 805-0030 ~ FAX (904) 805-9888

**GENERAL NOTES:**

- (1) BEARINGS SHOWN HEREON ARE BASED ON THE EAST LINE OF SECTION 32 AS N00°02'13"E, PER NAD83 (2011) FLORIDA STATE PLANE, EAST ZONE COORDINATES.
- (2) THIS SKETCH DOES NOT PURPORT TO BE A BOUNDARY SURVEY.
- (3) UNDERGROUND UTILITIES SERVING THIS PROPERTY HAVE NOT BEEN LOCATED OR SHOWN.
- (4) IT IS THE LENDER'S RESPONSIBILITY TO DETERMINE FEMA F.I.R.M. MAP STATUS FOR THE LIFE OF THE LOAN ON THE PROPERTY SHOWN ABOVE. SURVEYOR HEREON WILL CONFIRM FOR ADDITIONAL FEE.

**LEGEND**

P.C.	POINT OF CURVATURE
P.T.	POINT OF TANGENCY
P.R.C.	POINT OF REVERSE CURVE
P.C.C.	POINT OF COMPOUND CURVE
P.O.C.	POINT ON CURVE
P.R.M.	PERMANENT REFERENCE MONUMENT
P.C.P.	PERMANENT CONTROL POINT
B.R.L.	BUILDING RESTRICTION LINE
CLF	CHAIN LINK FENCE
R.W.	RIGHT-OF-WAY
O.R.B.	OFFICIAL RECORDS BOOK
OIL	ON LINE
---	BREAK LINE

SCALE 1"=600'

04-15-2022  
DATE OF SKETCH

R	RADIUS
Δ or D	DELTA (CENTRAL ANGLE)
A or L	ARC LENGTH
C or CH	CHORD
CB	CHORD BEARING
(R)	LINE RADIAL TO CURVE
A/C	AIR CONDITIONER
CONC.	CONCRETE
FD.	FOUND
I.P.	IRON PIPE
(M)	MEASURED
(D)	DEED
---	FENCE



# MAP SHOWING SKETCH & LEGAL DESCRIPTION OF

A PART OF SECTION 32, TOWNSHIP 1 NORTH, RANGE 26 EAST, CITY OF JACKSONVILLE, DUVAL COUNTY, FLORIDA  
(SEE SHEET 1 & 2 FOR COMPLETE DESCRIPTION)  
(SEE SHEET 3 FOR SKETCH)

CURVE TABLE					
CURVE #	LENGTH	RADIUS	DELTA	CHORD BEARING	CHORD
C1	193.53'	360.00'	30°48'04"	N75°01'04"W	191.21'
C2	254.29'	440.00'	33°08'46"	N76°10'25"W	250.76'
C3	36.81'	30.00'	70°18'30"	S11°35'43"W	34.55'
C4	141.39'	350.00'	23°08'45"	S11°59'10"E	140.43'
C5	54.17'	30.00'	103°27'40"	S52°08'38"E	47.11'
C6	39.27'	25.00'	90°00'00"	S44°35'12"W	35.36'
C7	38.71'	520.00'	4°15'55"	S19°20'20"W	38.70'
C8	55.38'	30.00'	105°45'58"	S69°25'31"W	47.84'
C9	51.87'	165.00'	18°00'39"	S25°32'51"W	51.65'
C10	60.43'	100.00'	34°37'31"	S17°14'25"W	58.52'
C11	38.29'	30.00'	73°08'09"	S36°38'25"E	35.75'
C12	29.46'	470.00'	3°35'29"	S70°29'49"W	29.46'

CURVE TABLE					
CURVE #	LENGTH	RADIUS	DELTA	CHORD BEARING	CHORD
C13	29.34'	30.00'	56°01'52"	S27°56'36"W	28.18'
C14	47.12'	30.00'	90°00'00"	S45°04'20"E	42.43'
C15	34.94'	30.00'	66°43'26"	N56°33'57"E	33.00'
C16	34.76'	30.00'	66°22'59"	N56°23'43"E	32.85'
C17	34.72'	30.00'	66°18'17"	S57°15'39"E	32.81'
C18	34.72'	30.00'	66°18'17"	S57°15'39"E	32.81'
C19	47.12'	30.00'	90°00'00"	N44°35'12"E	42.43'
C20	314.69'	165.00'	109°16'34"	N54°13'29"E	269.12'
C21	67.29'	200.00'	18°16'34"	S80°46'31"E	66.97'
C22	47.12'	30.00'	90°00'00"	N44°35'12"E	42.43'
C23	19.54'	35.00'	31°59'28"	S16°24'32"E	19.29'

LINE TABLE		
LINE #	LENGTH	DIRECTION
L1	858.48'	N00°02'13"W
L2	4.23'	S89°34'54"W
L3	121.72'	N59°37'02"W
L4	482.11'	N21°21'51"W
L5	330.31'	N00°00'00"E
L6	373.64'	N19°19'57"W
L7	628.70'	N00°00'00"E
L8	509.30'	S88°50'28"W
L9	459.07'	S17°25'11"W
L10	190.09'	S34°08'15"E
L11	133.33'	S77°54'37"E
L12	22.73'	N84°17'28"E
L13	7.24'	N76°03'29"E
L14	145.07'	S78°05'11"E
L15	89.89'	S61°11'37"E
L16	102.26'	S54°23'44"E
L17	99.59'	S43°45'06"E
L18	858.40'	S00°24'48"E

LINE TABLE		
LINE #	LENGTH	DIRECTION
L19	41.51'	S62°34'35"W
L20	120.00'	S89°35'12"W
L21	176.22'	S00°24'48"E
L22	60.00'	S89°35'12"W
L23	10.00'	S00°24'48"E
L24	95.00'	S89°35'12"W
L25	470.00'	N00°24'48"W
L26	120.00'	S89°35'12"W
L27	13.12'	N00°24'48"W
L28	60.00'	S89°35'12"W
L29	141.59'	S89°39'23"W
L30	60.30'	N10°00'32"E
L31	188.89'	N72°47'38"W
L32	275.73'	N68°31'42"W
L33	117.63'	N86°05'41"W
L34	423.71'	S07°15'38"E
L35	131.89'	S89°55'40"W
L36	10.95'	S29°18'27"W

LINE TABLE		
LINE #	LENGTH	DIRECTION
L37	302.95'	S00°04'20"E
L38	132.98'	S00°24'48"E
L39	60.00'	S17°42'26"E
L40	126.30'	S00°24'48"E
L41	106.89'	N89°55'40"E
L42	184.67'	S66°47'47"E
L43	192.66'	N89°35'12"E
L44	193.28'	N65°53'29"E
L45	104.04'	N89°35'12"E
L46	50.45'	N00°24'48"W
L47	180.00'	N89°35'12"E
L48	9.51'	N00°24'48"W
L49	120.00'	N89°35'12"E
L50	30.31'	S00°24'48"E
L51	37.12'	S32°24'16"E
L52	449.70'	N89°48'00"E

SHEET 4 OF 4

## PERRET AND ASSOCIATES, INC.

1484 MONTICELLO ROAD, JACKSONVILLE, FLORIDA 32207 - (904) 805-0030 - FAX (904) 805-9888

**GENERAL NOTES:**

- (1) BEARINGS SHOWN HEREON ARE BASED ON THE EAST LINE OF SECTION 32 AS N00°02'13"E, PER NAD83 (2011) FLORIDA STATE PLANE, EAST ZONE COORDINATES.
- (2) THIS SKETCH DOES NOT PURPORT TO BE A BOUNDARY SURVEY.
- (3) UNDERGROUND UTILITIES SERVING THIS PROPERTY HAVE NOT BEEN LOCATED OR SHOWN.
- (4) IT IS THE LENDER'S RESPONSIBILITY TO DETERMINE FEMA F.I.R.M. MAP STATUS FOR THE LIFE OF THE LOAN ON THE PROPERTY SHOWN ABOVE. SURVEYOR HEREON WILL CONFIRM FOR ADDITIONAL FEE.

**LEGEND**

P.C.	POINT OF CURVATURE
P.T.	POINT OF TANGENCY
P.R.C.	POINT OF REVERSE CURVE
P.C.C.	POINT OF COMPOUND CURVE
P.O.C.	POINT ON CURVE
P.R.M.	PERMANENT REFERENCE MONUMENT
P.C.P.	PERMANENT CONTROL POINT
B.R.L.	BUILDING RESTRICTION LINE
CLF	CHAIN LINK FENCE
RAW	RIGHT-OF-WAY
O.R.B.	OFFICIAL RECORDS BOOK
OL	ON LINE
— —	BREAK LINE

SCALE 1"=600'

04-15-2022

DATE OF SKETCH

R	RADIUS
Δ or D	DELTA (CENTRAL ANGLE)
A or L	ARC LENGTH
C or CH	CHORD
CB	CHORD BEARING
(R)	LINE RADIAL TO CURVE
A/C	AIR CONDITIONER
CONC.	CONCRETE
FD.	FOUND
I.P.	IRON PIPE
(M)	MEASURED
(D)	DEED
— —	FENCE

