

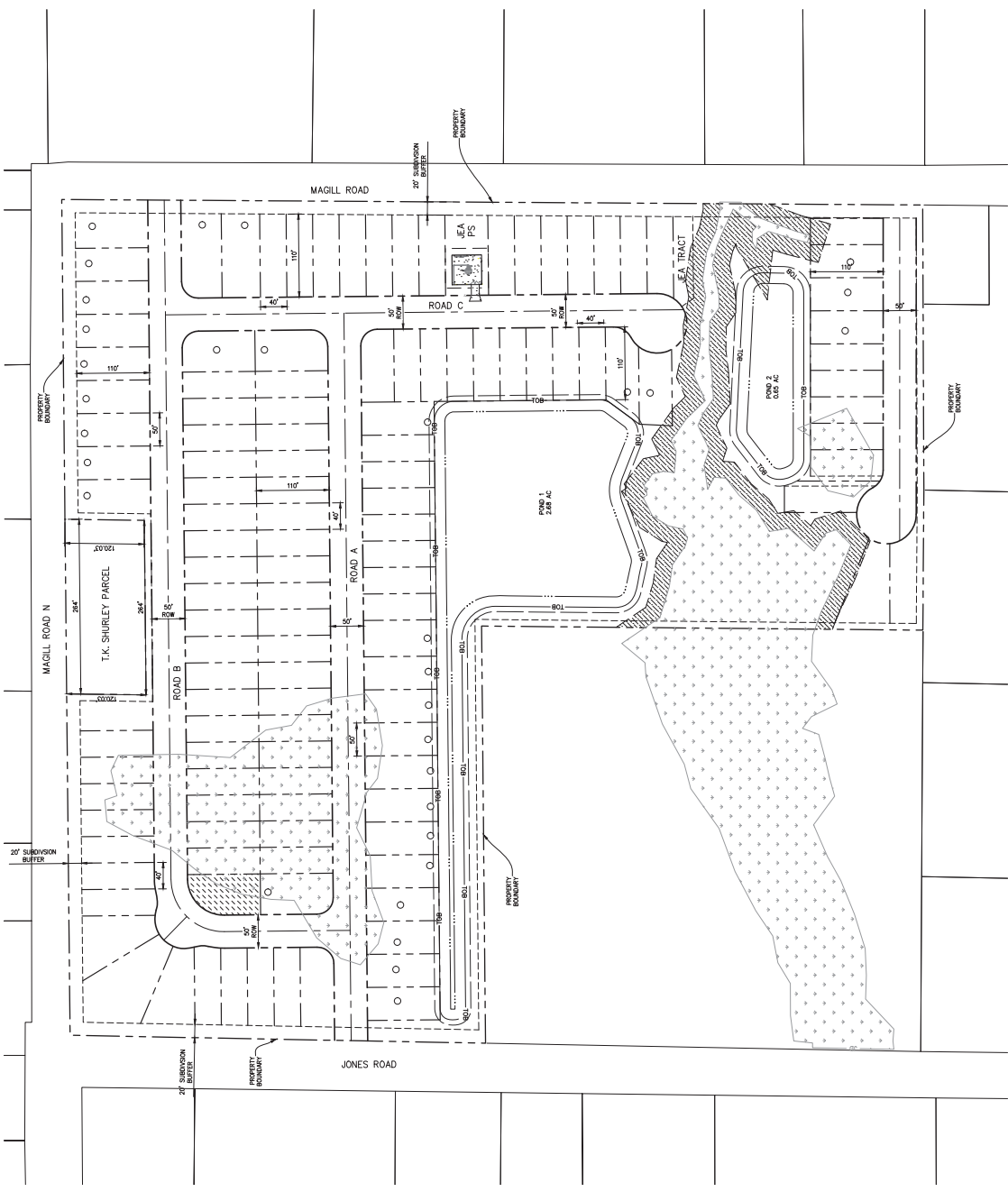
OPEN SPACE
 APPROXIMATE WETLAND
 DENOTES 50' LOT (ALL OTHER LOTS 40')

SITE DATA
 PARCELS:
 003366-0150
 003366-0210
 003366-0220
 003366-0050

TOTAL DEVELOPMENT AREA = 24.97 AC
 32 - 50' x 110' (MIN) LOTS
 92 - 40' x 110' (MIN) LOTS
 124 TOTAL

TOTAL NUMBER OF UNITS: 124 UNITS
 TOTAL POND AREA: 3.33± AC

SETBACKS:
 FRONT - 20'
 SIDE - 5'
 REAR - 10'



PRELIMINARY

SITE PLAN SUBJECT TO CHANGE



© 2024 KIMLEY-HORN AND ASSOCIATES, INC.
 12740 GRAN BAY PARKWAY WEST, SUITE 2150
 JACKSONVILLE, FLORIDA 32258
 PHONE: 904-828-3800
 WWW.KIMLEY-HORN.COM REGISTRY No. 35106

JONES MAGILL
 DUVAL COUNTY, FL