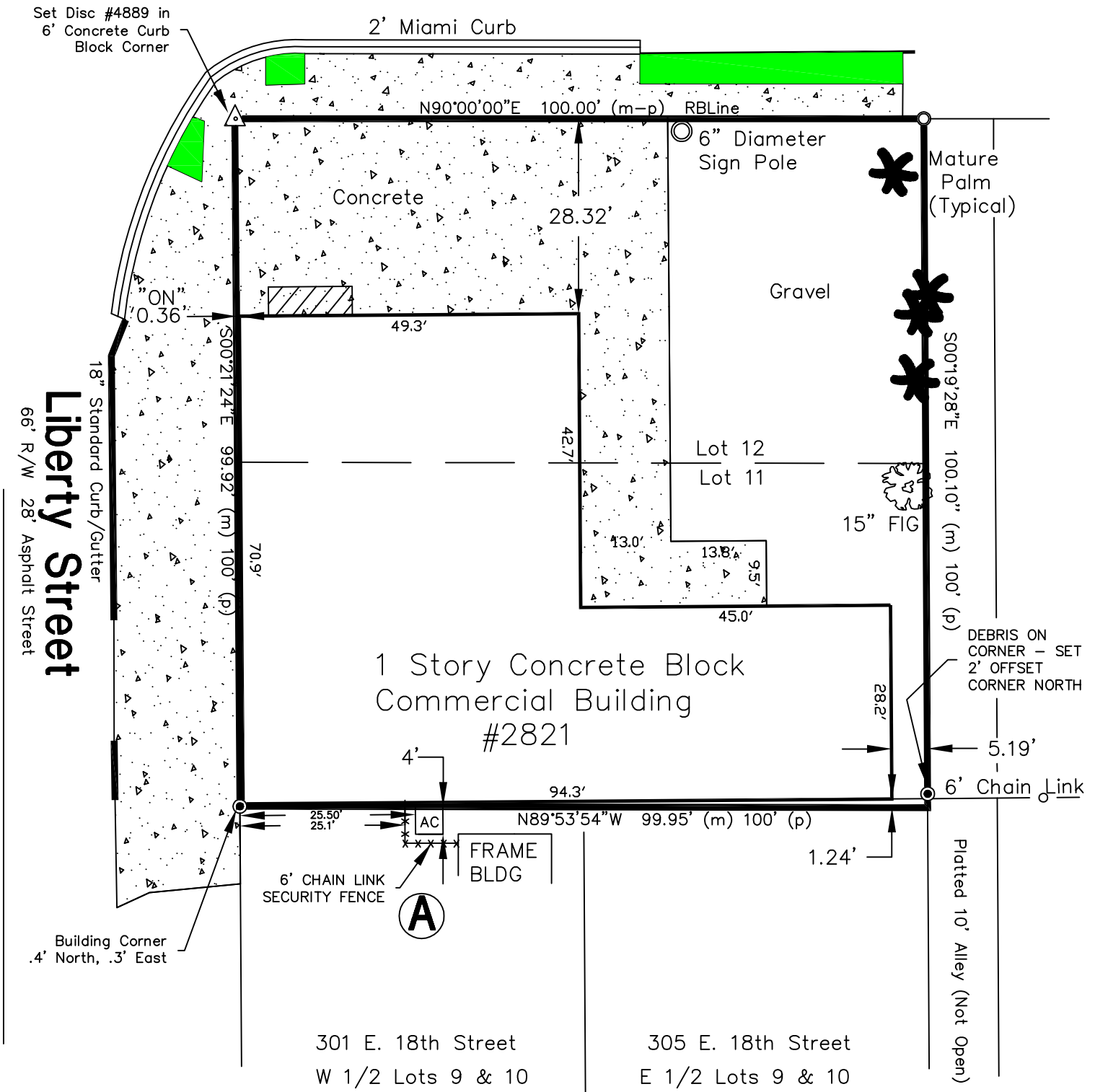
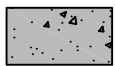
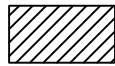



→ **19th Street**  
 ("On Ramp" for MLK Blvd.)  
 R/W Varies - Asphalt & Concrete Width Varies  
 →

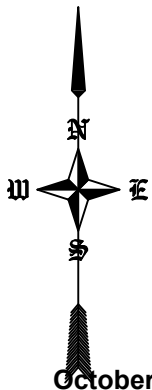


-  = Open Concrete
-  = Covered
-  = Grass

POINT OF INTEREST DEMARCATED THUSLY: **(A)** AIR CONDITIONER ON PAD OFF OF PROPERTY (Conditioned Use Allowed by Agreement)

PLEASE SEE SHEET 1 OF 2 FOR LEGAL DESCRIPTION, CERTIFICATIONS, FHA/VA WELL AND SEPTIC TANK DIMENSIONS ( if applicable ), LEGEND, SYMBOLS, ABBREVIATIONS, NOTES, SIGNATURE AND SEAL ETC.

PLAT CONTAINS NO BEARINGS/ANGLES FOR FIELD COMPARISON



October 7, 2020

**GRAPHIC SCALE**



( IN FEET )  
 1 inch = 000 ft.

**Exhibit 4**  
 Page 1 of 1

# Boundary Survey # 062714.1