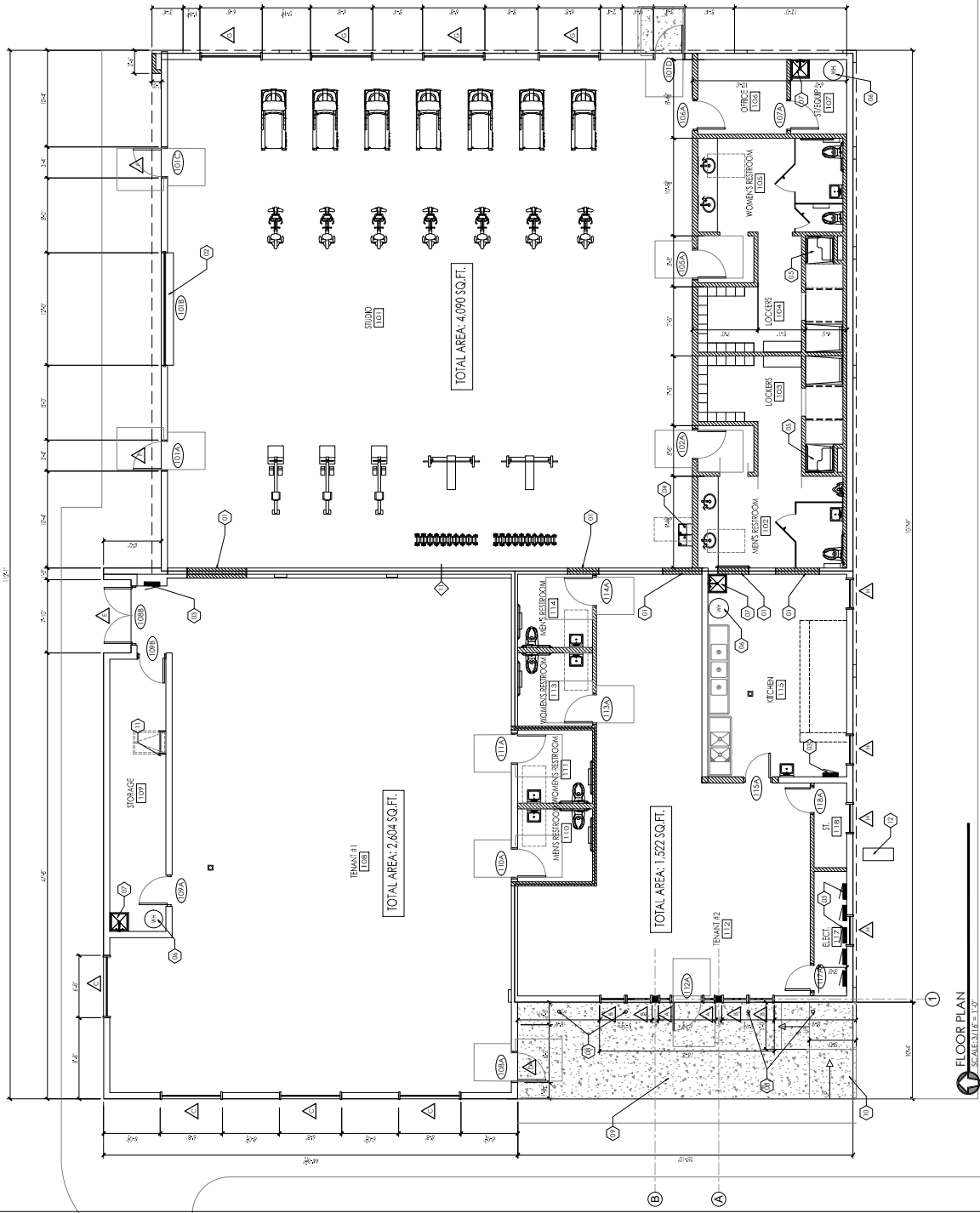


**CONSTRUCTION GENERAL NOTES:**

1. DIMENSIONS SHOWN ARE TO FACE OF WALL UNLESS OTHERWISE NOTED.
2. ALL INTERIORS TO BE FINISHED WITH 1/2" GYPSUM BOARD AND DARK BROWN ANODIZED ALUMINUM STOREFRONT WITH 1/2" INSULATED GLAZING AND DARK BROWN ANODIZED ALUMINUM EXTERIOR GLAZING TO BE 1/2" INSULATED GLAZING. OUTSIDE GLASS TO BE LOW-E CLEAR GLASS TO BE SELECTED. INSIDE GLASS TO BE CLEAR. PROVIDE FAULTY ENGINEER CONSULTATION REQUIRED BY CODE.
3. ALL EQUIPMENT INCLUDING KITCHEN AND RESTROOM AREAS AND ALL EQUIPMENT NOT SEPARATED MORE THAN 10' FROM ADJACENT SPACES.
4. COORDINATE WITH LOCAL AGENCIES. REMOVE ALL OLEF. PRINTS, OLEF. AND EXCESS PAINT, GULF ETC., FROM ALL NEW FINISH SURFACES AT EXTERIOR AND INTERIOR.

**CONSTRUCTION KEYNOTES:**

1. REMOVE EXISTING DOOR AND FRAME AND INSTALL OPENING WITH CONCRETE SURROUND.
2. ALUMINUM SECTIONAL DOOR WITH TRACK, LANCE, WHEEL IMPACT RESISTANT AND INSULATED GLASS, BASIS OF DESIGN OVERHEAD DOOR MODEL 521.
3. ELECTRICAL PANEL, SEE ELEC.
4. ACCESSIBLE WATER FOUNTAIN, SEE PLUMBING AND ELEC.
5. ACCESSIBLE SINKER WITH LINEAR DRAIN.
6. WATER METER, SEE PLUMBING.
7. MOP SINK, SEE PLUMBING.
8. WALL WASH LUMINAIRE RECEIVED IN CONCRETE, SEE ELECTRICAL.
9. NEW CONCRETE 3/4" SLOPE TO DRAIN.
10. NEW CONCRETE ACCESSIBLE RAMP.
11. WALL MOUNTED ACCESSIBLE TOILET WITH PRECISION LADDER, PROVIDE OPENING IN WALL AS SHOWN AND ACCESSIBLE TOILET AS SHOWN.
12. NEW BACKLASH WRENCHER LOCATION.



**FLOOR PLAN**  
SCALE: 1/8" = 1'-0"