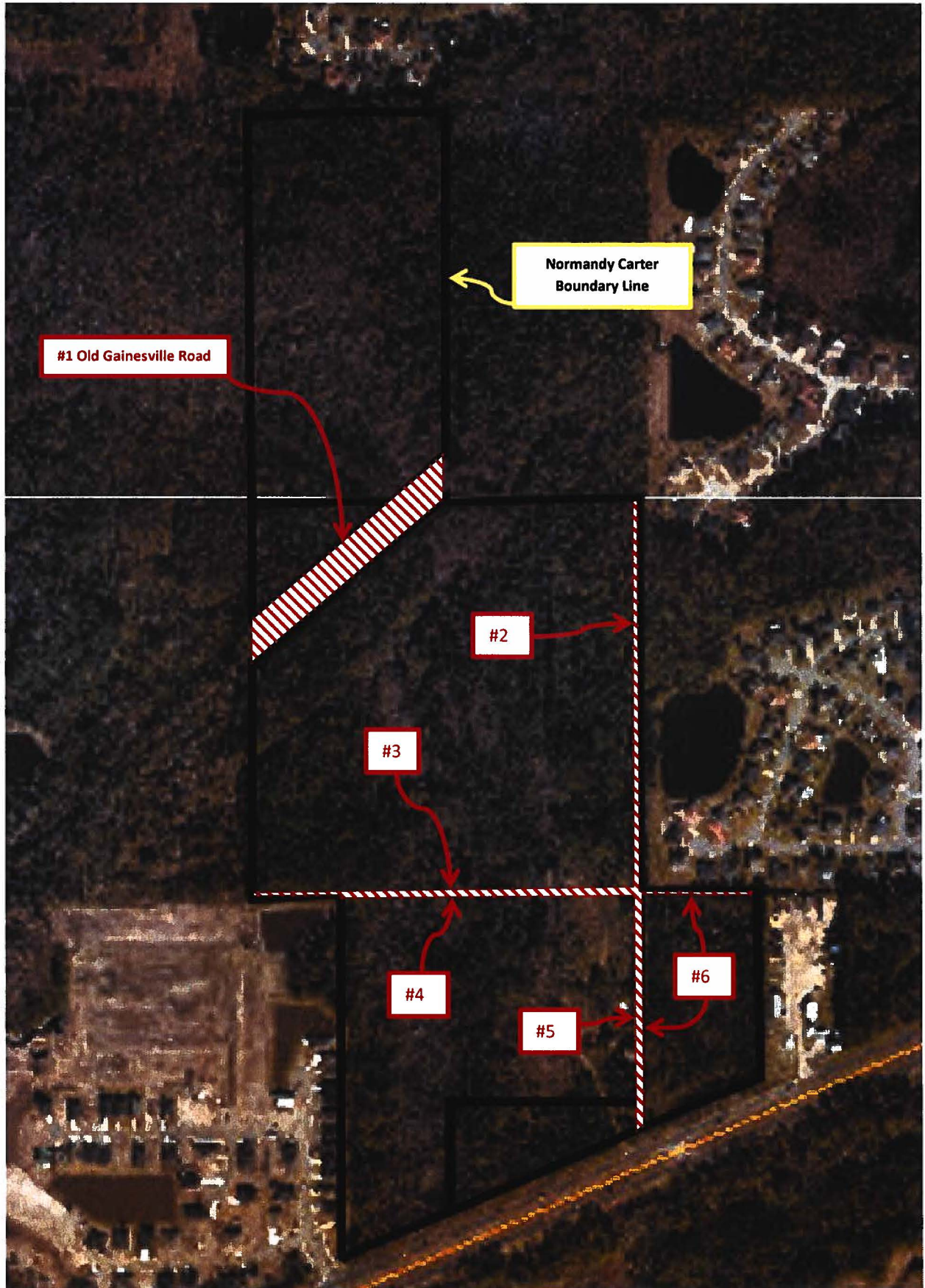


**NORMANDY CARTER R/W CLOSURES**



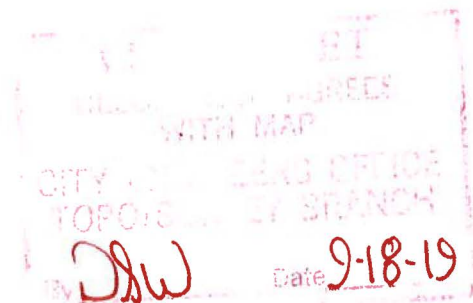
## EXHIBIT A

### NORMANDY CARTER R/W CLOSURES

#### LEGAL DESCRIPTIONS OF JACKSONVILLE HEIGHTS RIGHTS-OF WAYS TO BE CLOSED AND ABANDONED:

- That portion of 100' wide Old Gainesville Road R/W running through Tracts 3, 13 & 14, Block 1, Section 32, Township 2 South, Range 25 East
- 15' wide R/W along the East boundaries of Tracts 15 & 16, Block 1, Section 32, Township 2 South, Range 25 East
- 15' wide R/W along the South boundary of Tract 13, Block 1, Section 32, Township 2 South, Range 25 East
- 30' wide R/W along the South boundaries of Tracts 14 & 16, Block 1 and the Northern lines of Tracts 1 & 3, Block 4, all being within Section 32, Township 2 South, Range 25 East
- 15' wide R/W along the East lines of Tracts of 1 & 2, Block 4, Sections 32, Township 2 South, Range 25 East and North of Normandy Boulevard
- 15' wide R/W along the West lines of Tracts 7 & 8, Block 3, Section 33, Township 2 South, Range 25 East and North of Normandy Boulevard
- 15' wide R/W along the Westerly 400' of the North line of Tract 7, Block 3, Section 33, Township 2 South, Range 25 East

AS SHOWN ON THE PLAT OF JACKSONVILLE HEIGHTS AS RECORDED IN PLAT BOOK 5, PAGE 93,  
OF THE CURRENT PUBLIC RECORDS IN DUVAL COUNTY, FLORIDA



(Page 1 of 2)

**EXHIBIT A**  
**NORMANDY CARTER R/W CLOSURES**

