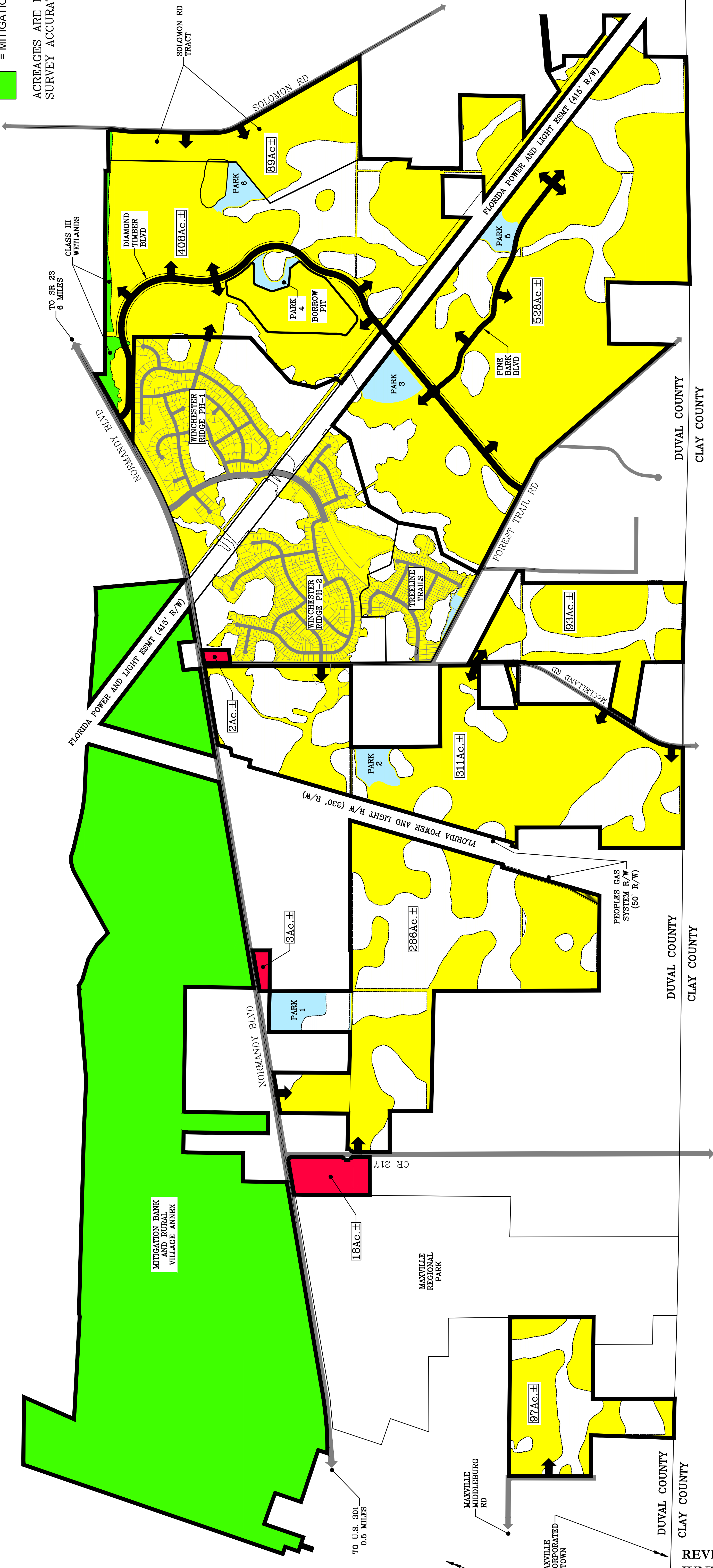


- LEGEND**
- = RESIDENTIAL
 - = COMMERCIAL
 - = RECREATION
 - = MITIGATION
- ACREAGES ARE NOT SURVEY ACCURATE



REVISED EXHIBIT 4
JUNE 15, 2021
PAGE 1 OF 1

THE PUD SKETCH PLAN IS CONCEPTUAL IN NATURE AND IS NON-BINDING.
THE CURRENT RECORDED PUD TEXT SHALL GOVERN ALLOWED USES
AND THEIR ALLOWED LOCATIONS.

Sheet No. 1 of 2
PSP-1
DWG. NO.

VINCENT J. DUNN ENGINEER NO. 98452
DAVID M. TAYLOR ENGINEER NO. 44164
GLEN R. WIEGGER ENGINEER NO. 81419
CERTIFICATE OF AUTHORIZATION NO. 27189

DIAMOND TIMBER TRAILS
FOR:
TIMBER FOREST TRAILS, LLC
DUVAL COUNTY, FLORIDA
PUD SKETCH PLAN

Dunn & Associates, Inc.
CIVIL ENGINEERS / LAND PLANNERS
8647 Boypine Road, Suite 200
Jacksonville, Florida 32256
Phone: (904)363-8916 Fax: (904)363-8917
www.dunneng.com

NO.	DATE	REVISIONS DESCRIPTION

DESIGNED BY: DAI	MR/SM/SS/NS
DRAWN BY: DMT	DMT
CHECKED BY: DMT	DMT
SCALE: 1" = 800'	June 15, 2021
DATE: June 15, 2021	1509-430
PROJ. NO.: 1509-430	