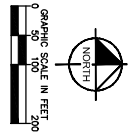
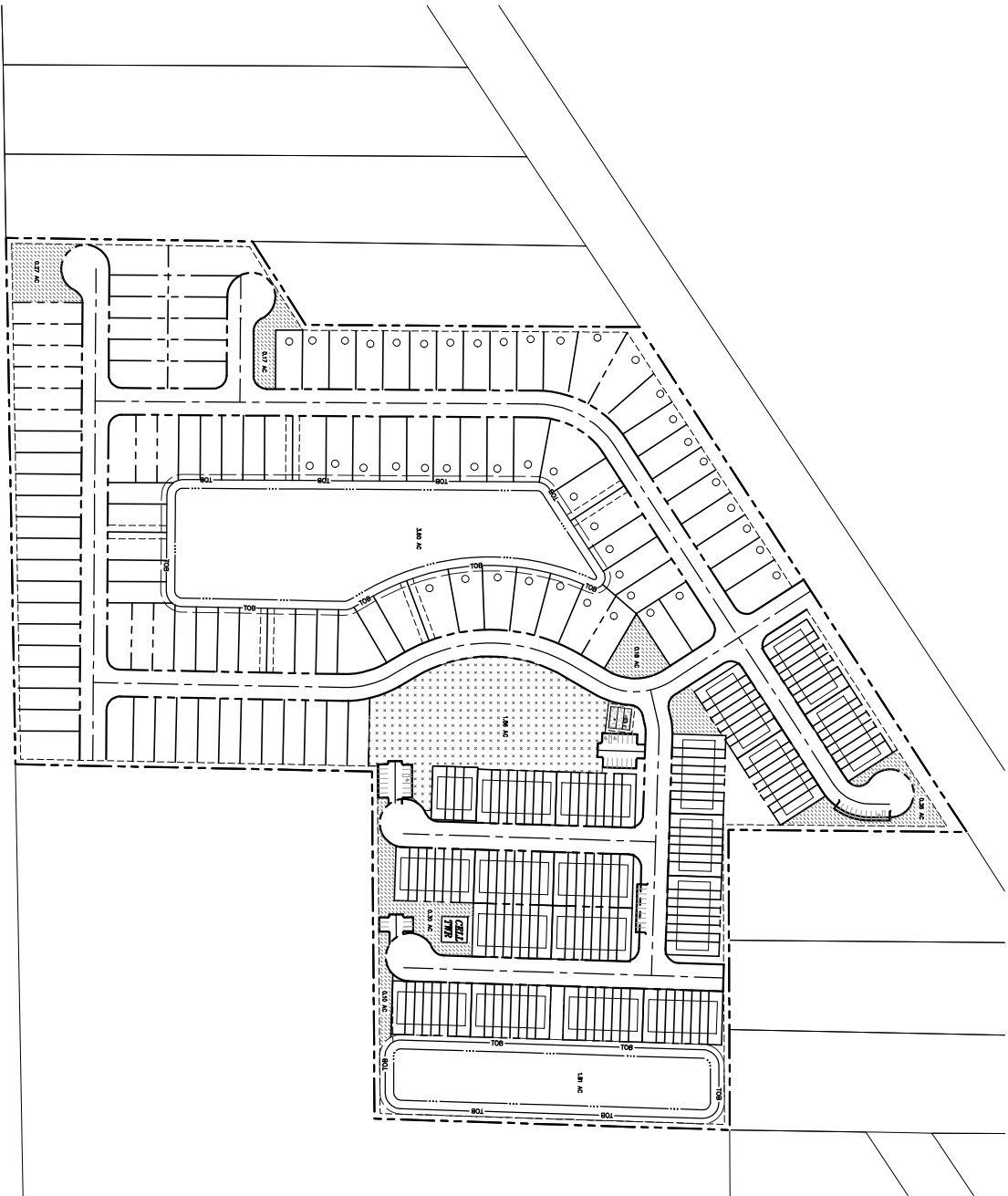


NORMANDY TOWNHOMES
 DUVAL COUNTY, FL



SITE DATA
 46 - 50' X 120' (MIN) LOTS
 71 - 40' X 120' (MIN) LOTS
 146 - 16' X 100' (MIN) LOTS
 283 TOTAL

TOTAL NUMBER OF UNITS: 283 UNITS
 TOTAL POND AREA: 5.41± AC
 OPEN SPACE: 1,304 AC

ACTIVE REC. 1 AC PER 100 SF UNITS = 1.17 AC
 REQUIRED: 154.0 AC PER 11 UNITS = 0.59 AC
 PROVIDED: 1.96 AC
 PARKING REQUIRED (TP)-49
 PARKING PROVIDED (TP)-52

UNIT BREAKDOWN:
 NUMBER OF 2-PLC: 17 = 138 UNITS
 NUMBER OF 3-PLC: 1 = 4 UNITS
 NUMBER OF 4-PLC: 1 = 4 UNITS
 TOTAL UNITS: = 146 UNITS
 ○ DENOTES 50' LOT
 TOTAL SITE AREA: 40,324 AC

Kimley»Horn
 2023 KIMLEY-HORN AND ASSOCIATES, INC.
 1740 GRAM BAY PARKWAY WEST, SUITE 2350
 JACKSONVILLE, FLORIDA 32218
 PHONE: 904-828-3800
 WWW.KIMLEY-HORN.COM REGISTERED NO. 51106