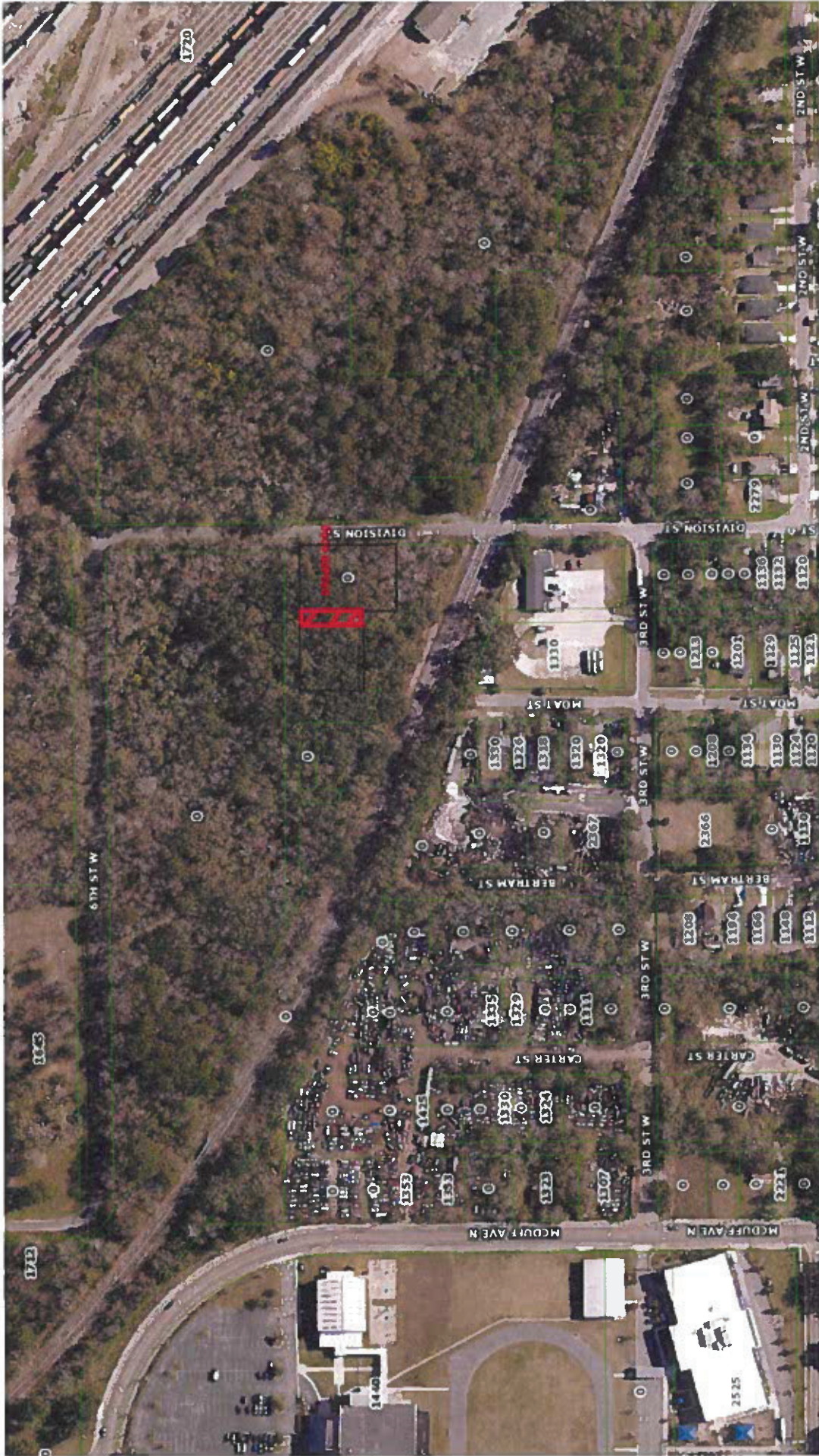


Moat St Closure – Aerial Map
RE 050499 0000 (for location purposes)



Moat St Closure – Location Map

RE 050499 0000 (for location purposes)



*The City of Jacksonville provides no warranties, expressed or implied, concerning the accuracy, completeness, or reliability of suitability of this location map for any particular use.

THAT PORTION OF A 20 FOOT ALLEY LYING NORTHERLY OF THE SOUTHERLY BOUNDARY, A OF LOTS 17 AND 24 OF BLOCK 4, AS SHOWN ON, WEST JACKSONVILLE, AS RECORDED IN PLAT BOOK AR-73, OF THE FORMER PUBLIC RECORDS OF DUVAL COUNTY, FLORIDA.

