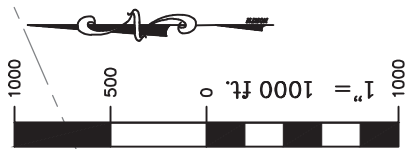
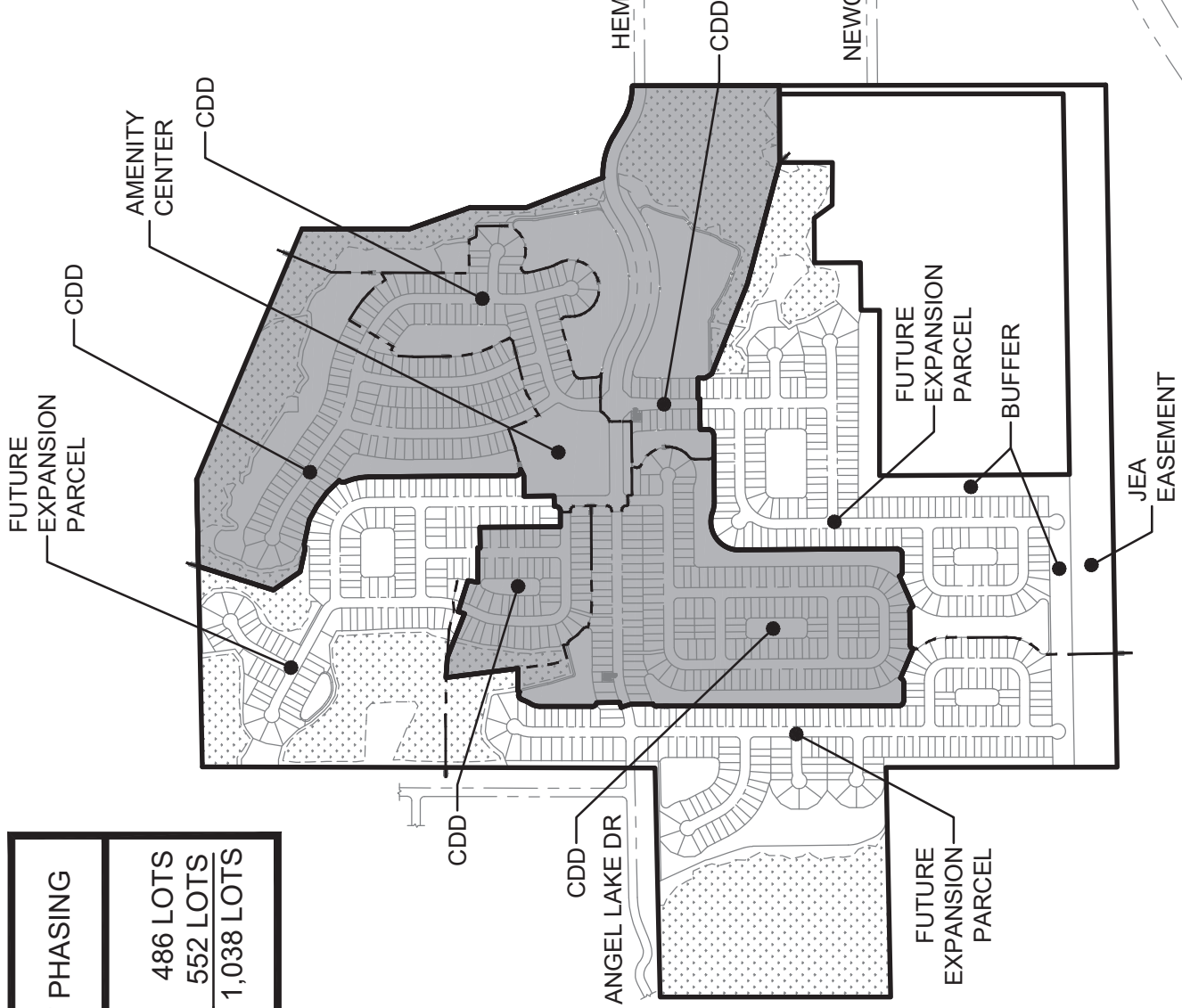


ARBORS COMMUNITY DEVELOPMENT DISTRICT

EXHIBIT 3A

PROJECT LAYOUT

July 15, 2022



DEVELOPMENT PHASING	
CDD	486 LOTS
FUTURE CDD	552 LOTS
TOTAL	1,038 LOTS

MAP SHOWING SKETCH & LEGAL DESCRIPTION OF

A PART OF SECTION 32, TOWNSHIP 1 NORTH, RANGE 26 EAST, CITY OF JACKSONVILLE, DUVAL COUNTY, FLORIDA.
BEING MORE PARTICULARLY DESCRIBED AS FOLLOWS:

BEGIN AT THE SOUTHEAST CORNER OF SAID SECTION 32; THENCE SOUTH 89°03'43" WEST, ALONG THE SOUTH LINE OF SAID SECTION 32, A DISTANCE OF 3986.73 TO THE NORTHWEST CORNER OF THOSE LANDS DESCRIBED IN OFFICIAL RECORDS BOOK 17151, PAGE 1996 OF THE CURRENT PUBLIC RECORDS OF DUVAL COUNTY, FLORIDA AND A POINT ON THE EAST LINE OF THOSE LANDS DESCRIBED IN OFFICIAL RECORDS BOOK 11481, PAGE 1340 OF SAID CURRENT PUBLIC RECORDS; THENCE NORTH 00°04'12" WEST, ALONG SAID EAST LINE AND THE EAST LINE OF THOSE LANDS DESCRIBED IN OFFICIAL RECORDS BOOK 15055, PAGE 1266 OF SAID CURRENT PUBLIC RECORDS, A DISTANCE OF 1349.12 FEET TO THE NORTHEAST CORNER OF LAST SAID LANDS; THENCE SOUTH 88°53'22" WEST, ALONG THE NORTH LINE OF LAST SAID LANDS, A DISTANCE OF 1341.63 FEET TO THE NORTHWEST CORNER OF LAST SAID LANDS AND A POINT ON THE EAST LINE OF ANGEL LAKES PHASE I, AS RECORDED ON THE PLAT THEREOF IN PLAT BOOK 53, PAGES 87 THROUGH 87B OF SAID CURRENT PUBLIC RECORDS; THENCE NORTH 00°02'12" WEST, ALONG LAST SAID EAST LINE AND THE EAST LINE OF ANGEL LAKE PHASE II, AS RECORDED ON THE PLAT THEREOF IN PLAT BOOK 55, PAGES 5 THROUGH 5B OF SAID CURRENT PUBLIC RECORDS, A DISTANCE OF 1345.57 FEET TO THE SOUTHWEST CORNER OF GREENE MEADOWS PHASE ONE-A, AS RECORDED ON THE PLAT THEREOF IN PLAT BOOK 72, PAGES 99 THROUGH 103 OF SAID CURRENT PUBLIC RECORDS; THENCE NORTH 88°43'08" EAST, ALONG THE SOUTH LINE OF SAID GREENE MEADOWS PHASE ONE-A AND THE SOUTH LINE OF GREENE MEADOWS PHASE ONE-B, AS RECORDED ON THE PLAT THEREOF IN PLAT BOOK 74, PAGES 77 THROUGH 81 OF SAID CURRENT PUBLIC RECORDS, A DISTANCE OF 1340.10 FEET TO THE SOUTHEAST CORNER OF SAID GREENE MEADOWS PHASE ONE-B; THENCE NORTH 00°08'32" EAST, ALONG THE EAST LINE OF SAID GREENE MEADOWS PHASE ONE-B AND THE EAST LINE OF GREENE MEADOWS PHASE TWO, AS RECORDED ON THE PLAT THEREOF IN PLAT BOOK 76, PAGES 123 THROUGH 128 OF SAID CURRENT PUBLIC RECORDS, A DISTANCE OF 2644.54 FEET TO A POINT ON THE NORTH LINE OF SAID SECTION 32; THENCE NORTH 88°50'28" EAST, ALONG SAID NORTH LINE, A DISTANCE OF 1171.03 FEET; THENCE SOUTH 17°25'11" WEST, DEPARTING SAID NORTH LINE, A DISTANCE OF 459.07 FEET; SOUTH 34°08'15" EAST, A DISTANCE OF 190.09 FEET; THENCE SOUTH 77°54'37" EAST, A DISTANCE OF 133.33 FEET; THENCE NORTH 84°17'28" EAST, A DISTANCE OF 22.73 FEET; THENCE NORTH 76°03'29" EAST, A DISTANCE OF 7.24 FEET; THENCE SOUTH 78°05'11" EAST, A DISTANCE OF 145.07 FEET; THENCE SOUTH 61°11'37" EAST, A DISTANCE OF 89.89 FEET; THENCE SOUTH 54°23'44" EAST, A DISTANCE OF 102.26 FEET; THENCE SOUTH 43°45'06" EAST, A DISTANCE OF 99.59 FEET TO A POINT OF NON-TANGENCY OF A CURVE BEING CONCAVE EASTERLY AND HAVING A RADIUS OF 30.00 FEET; THENCE SOUTHERLY, ALONG LAST SAID CURVE, AN ARC DISTANCE OF 36.81 FEET, LAST SAID ARC BEING SUBTENDED BY A CHORD BEARING OF SOUTH 11°35'43" WEST AND A CHORD DISTANCE OF 34.55 FEET TO A POINT OF REVERSE CURVATURE OF A CURVE BEING CONCAVE WESTERLY AND HAVING A RADIUS OF 350.00 FEET; THENCE SOUTHERLY, ALONG LAST SAID CURVE, AN ARC DISTANCE OF 141.39 FEET, LAST SAID ARC BEING SUBTENDED BY A CHORD BEARING OF SOUTH 11°59'10" EAST AND A CHORD DISTANCE OF 140.43 FEET TO A POINT OF TANGENCY OF LAST SAID CURVE; THENCE SOUTH 00°24'48" EAST, A DISTANCE OF 858.40 FEET TO A POINT OF CURVATURE OF A CURVE BEING CONCAVE NORTHEASTERLY AND HAVING A RADIUS OF 30.00 FEET; THENCE SOUTHEASTERLY, ALONG LAST SAID CURVE, AN ARC DISTANCE OF 54.17 FEET, LAST SAID ARC BEING SUBTENDED BY A CHORD BEARING OF SOUTH 52°08'38" EAST AND A CHORD DISTANCE OF 47.11 FEET TO A POINT OF NON-TANGENCY OF LAST SAID CURVE; THENCE SOUTH 62°34'35" WEST, A DISTANCE OF 41.51 FEET; THENCE SOUTH 89°35'12" WEST, A DISTANCE OF 120.00 FEET; THENCE SOUTH 00°24'48" EAST, A DISTANCE OF 176.22 FEET; THENCE SOUTH 89°35'12" WEST, A DISTANCE OF 60.00 FEET; THENCE SOUTH 00°24'48" EAST, A DISTANCE OF 10.00 FEET TO A POINT OF CURVATURE OF A CURVE BEING CONCAVE NORTHWESTERLY AND HAVING A RADIUS OF 25.00 FEET; THENCE SOUTHWESTERLY, ALONG LAST SAID CURVE, AN ARC DISTANCE OF 39.27 FEET, LAST SAID ARC BEING SUBTENDED BY A CHORD BEARING OF SOUTH 44°35'12" WEST AND A CHORD DISTANCE OF 35.36 FEET TO A POINT OF TANGENCY OF LAST SAID CURVE; THENCE SOUTH 89°35'12" WEST, A DISTANCE OF 95.00 FEET; THENCE NORTH 00°24'48" WEST, A DISTANCE OF 470.00 FEET; THENCE SOUTH 89°35'12" WEST, A DISTANCE OF 120.00 FEET; THENCE NORTH 00°24'48" WEST, A DISTANCE OF 13.12 FEET; THENCE SOUTH 89°35'12" WEST, A DISTANCE OF 60.00 FEET; THENCE SOUTH 89°39'23" WEST, A DISTANCE OF 141.59 FEET; THENCE NORTH 10°00'32" EAST, A DISTANCE OF 60.30 FEET; THENCE NORTH 72°47'38" WEST, A DISTANCE OF 188.89 FEET TO A POINT OF NON-TANGENCY OF A CURVE BEING CONCAVE WESTERLY AND HAVING A RADIUS OF 520.00 FEET; THENCE SOUTHERLY, ALONG LAST SAID CURVE, AN ARC DISTANCE OF 38.71 FEET, LAST SAID ARC BEING SUBTENDED BY A CHORD BEARING OF SOUTH 19°20'20" WEST AND A CHORD DISTANCE OF 38.70 FEET TO A POINT OF NON-TANGENCY OF LAST SAID CURVE; THENCE NORTH 68°31'42" WEST, A DISTANCE OF 275.73 FEET; THENCE NORTH 86°05'41" WEST, A DISTANCE OF 117.63 FEET; THENCE SOUTH 07°15'38" EAST, A DISTANCE OF 423.71 FEET; THENCE SOUTH 89°55'40" WEST, A DISTANCE OF 131.89 FEET; THENCE SOUTH 29°18'27" WEST, A DISTANCE OF 10.95 FEET TO A POINT OF NON-TANGENCY OF A CURVE BEING CONCAVE SOUTHERLY AND HAVING A RADIUS OF 30.00 FEET; THENCE WESTERLY, ALONG LAST SAID CURVE, AN ARC DISTANCE OF 55.38 FEET, LAST SAID ARC BEING SUBTENDED BY A CHORD BEARING OF SOUTH 69°25'31" WEST AND A CHORD DISTANCE OF 47.84 FEET TO A POINT OF REVERSE CURVATURE OF A CURVE BEING CONCAVE WESTERLY AND HAVING A RADIUS OF 165.00 FEET; THENCE SOUTHERLY, ALONG LAST SAID CURVE, AN ARC DISTANCE OF 51.87 FEET, LAST SAID ARC BEING SUBTENDED BY A CHORD BEARING OF SOUTH 25°32'51" WEST AND A CHORD DISTANCE OF 51.65 FEET TO A POINT OF REVERSE CURVATURE OF A CURVE BEING CONCAVE EASTERLY AND HAVING A RADIUS OF 100.00 FEET;

(LEGAL DESCRIPTION CONTINUED ON SHEET 2)

(SEE SHEET 3 FOR SKETCH)

(SEE SHEET 4 FOR TABULATED LINE AND CURVE INFORMATION)

SHEET 1 OF 4

PERRET AND ASSOCIATES, INC.

1484 MONTICELLO ROAD, JACKSONVILLE, FLORIDA 32207 - (904) 805-0030 - FAX (904) 805-9888

GENERAL NOTES:

- (1) BEARINGS SHOWN HEREON ARE BASED ON THE EAST LINE OF SECTION 32 AS S00°05'11"E, PER NAD83 (2011) FLORIDA STATE PLANE, EAST ZONE COORDINATES.
- (2) THIS SKETCH DOES NOT PURPORT TO BE A BOUNDARY SURVEY.
- (3) UNDERGROUND UTILITIES SERVING THIS PROPERTY HAVE NOT BEEN LOCATED OR SHOWN.
- (4) IT IS THE LENDER'S RESPONSIBILITY TO DETERMINE FEMA F.I.R.M. MAP STATUS FOR THE LIFE OF THE LOAN ON THE PROPERTY SHOWN ABOVE. SURVEYOR HEREON WILL CONFIRM FOR ADDITIONAL FEE.

P.C. POINT OF CURVATURE
P.T. POINT OF TANGENCY
P.R.C. POINT OF REVERSE CURVE
P.C.C. POINT OF COMPOUND CURVE
P.O.C. POINT ON CURVE
P.R.M. PERMANENT REFERENCE MONUMENT
P.C.P. PERMANENT CONTROL POINT
B.R.L. BUILDING RESTRICTION LINE
C.L.F. CHAIN LINK FENCE
R.W. RIGHT-OF-WAY
O.R.B. OFFICIAL RECORDS BOOK
O.L. ON LINE
B.L. BREAK LINE

LEGEND

R RADIUS
Δ or D DELTA (CENTRAL ANGLE)
A or L ARC LENGTH
C or CH CHORD
C or B CHORD BEARING
(R) LINE RADIAL TO CURVE
AC AIR CONDITIONER
CONC CONCRETE
FOUN FOUNDATION
IRON PIPE
(M) MEASURED
(D) DEED
FENCE



SCALE 1"=800'

06-17-2022

DATE OF SKETCH

NATHAN P. PERRET - FLA. CERT. NO. 6900

LB ~ 6715

F.B. - PG. - NOT VALID WITHOUT THE SIGNATURE & ORIGINAL RAISED SEAL OF A FLORIDA LICENSED SURVEYOR & MAPPER ORDER NO. 2021-2503-15

MAP SHOWING SKETCH & LEGAL DESCRIPTION OF

(LEGAL DESCRIPTION CONTINUED FROM SHEET 1)

THENCE SOUTHERLY, ALONG LAST SAID CURVE, AN ARC DISTANCE OF 60.43 FEET, LAST SAID ARC BEING SUBTENDED BY A CHORD BEARING OF SOUTH 17°14'25" WEST AND A CHORD DISTANCE OF 59.52 FEET TO A POINT OF TANGENCY OF LAST SAID CURVE; THENCE SOUTH 00°04'20" EAST, A DISTANCE OF 302.95 FEET TO A POINT OF CURVATURE OF A CURVE BEING CONCAVE NORTHEASTERLY AND HAVING A RADIUS OF 30.00 FEET; THENCE SOUTHEASTERLY, ALONG LAST SAID CURVE, AN ARC DISTANCE OF 38.29 FEET, LAST SAID ARC BEING SUBTENDED BY A CHORD BEARING OF SOUTH 36°38'25" EAST AND A CHORD DISTANCE OF 35.75 FEET TO A POINT OF NON-TANGENCY OF LAST SAID CURVE; THENCE SOUTH 00°24'48" EAST, A DISTANCE OF 132.98 FEET TO A POINT OF NON-TANGENCY OF A CURVE BEING CONCAVE NORTHWESTERLY AND HAVING A RADIUS OF 470.00 FEET; THENCE SOUTHWESTERLY, ALONG LAST SAID CURVE, AN ARC DISTANCE OF 29.46 FEET, LAST SAID ARC BEING SUBTENDED BY A CHORD BEARING OF SOUTH 70°29'49" WEST AND A CHORD DISTANCE OF 29.46 FEET TO A POINT OF NON-TANGENCY OF LAST SAID CURVE; THENCE SOUTH 17°42'26" EAST, A DISTANCE OF 60.00 FEET; THENCE SOUTH 00°24'48" EAST, A DISTANCE OF 126.30 FEET TO A POINT OF NON-TANGENCY OF A CURVE BEING CONCAVE SOUTHEASTERLY AND HAVING A RADIUS OF 30.00 FEET; THENCE SOUTHWESTERLY, ALONG LAST SAID CURVE, AN ARC DISTANCE OF 29.34 FEET, LAST SAID ARC BEING SUBTENDED BY A CHORD BEARING OF SOUTH 27°56'36" WEST AND A CHORD DISTANCE OF 28.18 FEET TO A POINT OF TANGENCY OF LAST SAID CURVE; THENCE SOUTH 00°04'20" EAST, A DISTANCE OF 1412.52 FEET TO A POINT OF CURVATURE OF A CURVE BEING CONCAVE NORTHEASTERLY AND HAVING A RADIUS OF 30.00 FEET; THENCE SOUTHEASTERLY, ALONG LAST SAID CURVE, AN ARC DISTANCE OF 47.12 FEET, LAST SAID ARC BEING SUBTENDED BY A CHORD BEARING OF SOUTH 45°04'20" EAST, AND A CHORD DISTANCE OF 42.43 FEET TO A POINT OF TANGENCY OF LAST SAID CURVE; THENCE NORTH 89°55'40" EAST, A DISTANCE OF 106.89 FEET TO A POINT OF CURVATURE OF A CURVE BEING CONCAVE NORTHWESTERLY AND HAVING A RADIUS OF 30.00 FEET; THENCE NORTHEASTERLY, ALONG LAST SAID CURVE, AN ARC DISTANCE OF 34.94 FEET, LAST SAID ARC BEING SUBTENDED BY A CHORD BEARING OF NORTH 56°33'57" EAST AND A CHORD DISTANCE OF 33.00 FEET TO A POINT OF NON-TANGENCY OF LAST SAID CURVE; THENCE SOUTH 66°47'47" EAST, A DISTANCE OF 184.67 FEET TO A POINT OF NON-TANGENCY OF A CURVE BEING CONCAVE SOUTHEASTERLY AND HAVING A RADIUS OF 30.00 FEET; THENCE NORTHEASTERLY, ALONG LAST SAID CURVE, AN ARC DISTANCE OF 34.76 FEET, LAST SAID ARC BEING SUBTENDED BY A CHORD BEARING OF NORTH 56°23'43" EAST AND A CHORD DISTANCE OF 32.85 FEET TO A POINT OF TANGENCY OF LAST SAID CURVE; THENCE NORTH 89°35'12" EAST, A DISTANCE OF 192.66 FEET TO A POINT OF CURVATURE OF A CURVE BEING CONCAVE SOUTHWESTERLY AND HAVING A RADIUS OF 30.00 FEET; THENCE SOUTHEASTERLY, ALONG LAST SAID CURVE, AN ARC DISTANCE OF 34.72 FEET, LAST SAID ARC BEING SUBTENDED BY A CHORD BEARING OF SOUTH 57°15'39" EAST AND A CHORD DISTANCE OF 32.81 FEET TO A POINT OF NON-TANGENCY OF LAST SAID CURVE; THENCE NORTH 65°53'29" EAST, A DISTANCE OF 193.28 FEET TO A POINT OF NON-TANGENCY OF A CURVE BEING CONCAVE NORTHEASTERLY AND HAVING A RADIUS OF 30.00 FEET; THENCE SOUTHEASTERLY, ALONG LAST SAID CURVE, AN ARC DISTANCE OF 34.72 FEET, LAST SAID ARC BEING SUBTENDED BY A CHORD BEARING OF SOUTH 57°15'39" EAST AND A CHORD DISTANCE OF 32.81 FEET TO A POINT OF TANGENCY OF LAST SAID CURVE; THENCE NORTH 89°35'12" EAST, A DISTANCE OF 104.04 FEET TO A POINT OF CURVATURE OF A CURVE BEING CONCAVE NORTHWESTERLY AND HAVING A RADIUS OF 30.00 FEET; THENCE NORTHEASTERLY, ALONG LAST SAID CURVE, AN ARC DISTANCE OF 47.12 FEET, LAST SAID ARC BEING SUBTENDED BY A CHORD BEARING OF NORTH 44°35'12" EAST AND A CHORD DISTANCE OF 42.43 FEET TO A POINT OF TANGENCY OF LAST SAID CURVE; THENCE NORTH 00°24'48" WEST, A DISTANCE OF 921.40 FEET TO A POINT OF CURVATURE OF A CURVE BEING CONCAVE SOUTHEASTERLY AND HAVING A RADIUS OF 165.00 FEET; THENCE NORTHEASTERLY, ALONG LAST SAID CURVE, AN ARC DISTANCE OF 314.69 FEET, LAST SAID ARC BEING SUBTENDED BY A CHORD BEARING OF NORTH 54°13'29" EAST AND A CHORD DISTANCE OF 269.12 FEET TO A POINT OF REVERSE CURVATURE OF A CURVE BEING CONCAVE NORTHERLY AND HAVING A RADIUS OF 200.00 FEET; THENCE EASTERLY, ALONG LAST SAID CURVE, AN ARC DISTANCE OF 67.29 FEET, LAST SAID ARC BEING SUBTENDED BY A CHORD BEARING OF SOUTH 80°46'31" EAST AND A CHORD DISTANCE OF 66.97 FEET TO A POINT OF TANGENCY OF LAST SAID CURVE; THENCE NORTH 89°35'12" EAST, A DISTANCE OF 388.71 FEET TO A POINT OF CURVATURE OF A CURVE BEING CONCAVE NORTHWESTERLY AND HAVING A RADIUS OF 30.00 FEET; THENCE NORTHEASTERLY, ALONG LAST SAID CURVE, AN ARC DISTANCE OF 47.12 FEET, LAST SAID ARC BEING SUBTENDED BY A CHORD BEARING OF NORTH 44°35'12" EAST AND A CHORD DISTANCE OF 42.43 FEET TO A POINT OF TANGENCY OF LAST SAID CURVE; THENCE NORTH 00°24'48" WEST, A DISTANCE OF 50.45 FEET; THENCE NORTH 89°35'12" EAST, A DISTANCE OF 180.00 FEET; THENCE NORTH 00°24'48" WEST, A DISTANCE OF 9.51 FEET; THENCE NORTH 89°35'12" EAST, A DISTANCE OF 120.00 FEET; THENCE SOUTH 00°24'48" EAST, A DISTANCE OF 30.31 FEET TO A POINT OF CURVATURE OF A CURVE BEING CONCAVE EASTERLY AND HAVING A RADIUS OF 35.00 FEET; THENCE SOUTHERLY, ALONG LAST SAID CURVE, AN ARC DISTANCE OF 19.54 FEET, LAST SAID ARC BEING SUBTENDED BY A CHORD BEARING OF SOUTH 16°24'32" EAST AND A CHORD DISTANCE OF 19.29 FEET TO A POINT OF TANGENCY OF LAST SAID CURVE; THENCE SOUTH 32°24'16" EAST, A DISTANCE OF 37.12 FEET; THENCE SOUTH 68°26'08" EAST, A DISTANCE OF 565.26 FEET; THENCE SOUTH 75°03'06" EAST, A DISTANCE OF 733.76 FEET; THENCE NORTH 89°48'00" EAST, A DISTANCE OF 449.70 FEET TO A POINT ON THE EAST LINE OF SAID SECTION 32; THENCE SOUTH 00°05'11" EAST, ALONG LAST SAID EAST LINE, A DISTANCE OF 1906.70 FEET TO THE SOUTHEAST CORNER OF SAID SECTION 32 AND THE POINT OF BEGINNING.

LESS AND EXCEPT THOSE LANDS DESCRIBED IN OFFICIAL RECORDS BOOK 18769, PAGE 503 OF THE CURRENT PUBLIC RECORDS OF DUVAL COUNTY, FLORIDA.

SAID LANDS CONTAINING 222.75 ACRES, MORE OR LESS.

(SEE SHEET 3 FOR SKETCH)

(SEE SHEET 4 FOR TABULATED LINE AND CURVE INFORMATION)

SHEET 2 OF 4

PERRET AND ASSOCIATES, INC.

1844 MONTICELLO ROAD, JACKSONVILLE, FLORIDA 32207 ~ (904) 805-0030 ~ FAX (904) 805-9888

GENERAL NOTES:

- (1) BEARINGS SHOWN HEREON ARE BASED ON THE EAST LINE OF SECTION 32 AS S00°05'11"E, PER NAD83 (2011) FLORIDA STATE PLANE, EAST ZONE COORDINATES.
- (2) THIS SKETCH DOES NOT PURPORT TO BE A BOUNDARY SURVEY.
- (3) UNDERGROUND UTILITIES SERVING THIS PROPERTY HAVE NOT BEEN LOCATED OR SHOWN.
- (4) IT IS THE LENDER'S RESPONSIBILITY TO DETERMINE FEMA F.I.R.M. MAP STATUS FOR THE LIFE OF THE LOAN ON THE PROPERTY SHOWN ABOVE. SURVEYOR HEREON WILL CONFIRM FOR ADDITIONAL FEE.

LEGEND

P.C.	POINT OF CURVATURE	R	RADIUS
P.T.	POINT OF TANGENCY	Δ or D	DELTA (CENTRAL ANGLE)
P.R.C.	POINT OF REVERSE CURVE	A or L	ARC LENGTH
P.C.C.	POINT OF COMPOUND CURVE	C or CH	CHORD
P.O.C.	POINT ON CURVE	CB	CHORD BEARING
P.R.M.	PERMANENT REFERENCE MONUMENT	(R)	LINE RADIAL TO CURVE
P.C.P.	PERMANENT CONTROL POINT	A/C	AIR CONDITIONER
B.R.L.	BUILDING RESTRICTION LINE	CONC.	CONCRETE
CLF	CHAIN LINK FENCE	FD.	FOUND
R/W	RIGHT-OF-WAY	IP.	IRON PIPE
O.R.B.	OFFICIAL RECORDS BOOK	(M)	MEASURED
OL	ON LINE	(D)	DEED
— —	BREAK LINE	— —	FENCE

SCALE 1"=800'

06-17-2022

DATE OF SKETCH



LB ~ 6715

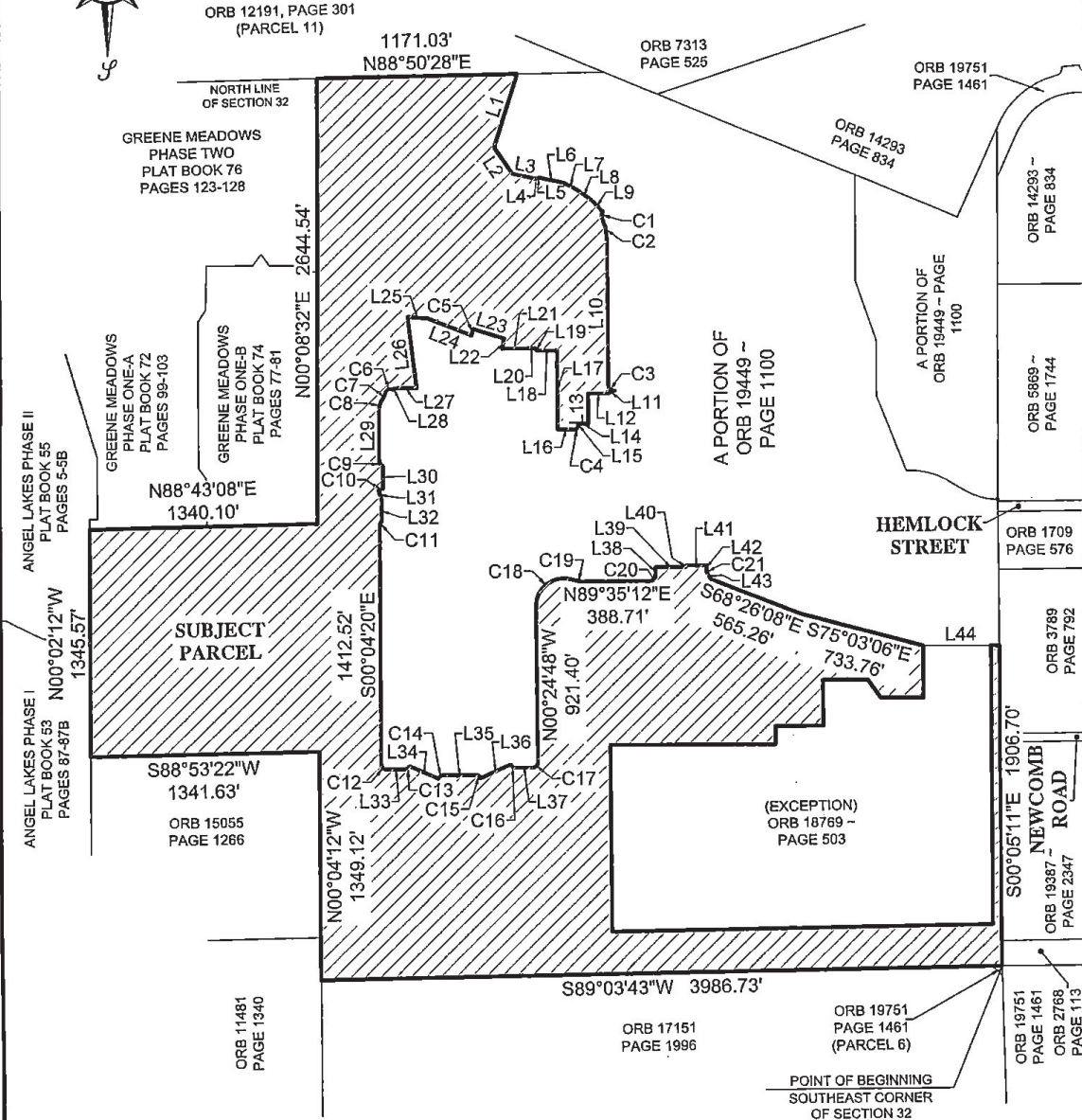
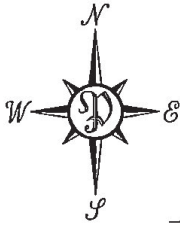
F.B. - PG. -

NOT VALID WITHOUT THE SIGNATURE & ORIGINAL RAISED SEAL OF A FLORIDA LICENSED SURVEYOR & MAPPER ORDER NO.

2021-2503-15

MAP SHOWING SKETCH & LEGAL DESCRIPTION OF

A PART OF SECTION 32, TOWNSHIP 1 NORTH, RANGE 26 EAST, CITY OF JACKSONVILLE, DUVAL COUNTY, FLORIDA
 (SEE SHEET 1 & 2 FOR COMPLETE LEGAL DESCRIPTION)
 (SEE SHEET 4 FOR TABULATED LINE AND CURVE INFORMATION)



SHEET 3 OF 4

PERRET AND ASSOCIATES, INC.

1484 MONTICELLO ROAD, JACKSONVILLE, FLORIDA 32207 ~ (904) 805-0030 ~ FAX (904) 805-9888

- GENERAL NOTES:**
- (1) BEARINGS SHOWN HEREON ARE BASED ON THE EAST LINE OF SECTION 32 AS S00°05'11"E, PER NAD83 (2011) FLORIDA STATE PLANE, EAST ZONE COORDINATES.
 - (2) THIS SKETCH DOES NOT PURPORT TO BE A BOUNDARY SURVEY.
 - (3) UNDERGROUND UTILITIES SERVING THIS PROPERTY HAVE NOT BEEN LOCATED OR SHOWN.
 - (4) IT IS THE LENDER'S RESPONSIBILITY TO DETERMINE FEMA F.I.R.M. MAP STATUS FOR THE LIFE OF THE LOAN ON THE PROPERTY SHOWN ABOVE. SURVEYOR HEREON WILL CONFIRM FOR ADDITIONAL FEE.

LEGEND

P.C.	POINT OF CURVATURE
P.T.	POINT OF TANGENCY
P.R.C.	POINT OF REVERSE CURVE
P.C.C.	POINT OF COMPOUND CURVE
P.O.C.	POINT ON CURVE
P.R.M.	PERMANENT REFERENCE MONUMENT
P.C.P.	PERMANENT CONTROL POINT
B.R.L.	BUILDING RESTRICTION LINE
CLF	CHAIN LINK FENCE
RAW	RIGHT-OF-WAY
O.R.B.	OFFICIAL RECORDS BOOK
OIL	ON LINE
— —	BREAK LINE

R	RADIUS
Δ or D	DELTA (CENTRAL ANGLE)
A or L	ARC LENGTH
C or CH	CHORD
CB	CHORD BEARING
(R)	LINE RADIAL TO CURVE
AC	AIR CONDITIONER
CONC.	CONCRETE
FD.	FOUND
I.P.	IRON PIPE
(M)	MEASURED
(D)	DEED
— —	FENCE

SCALE 1"=800'
 06-17-2022
 DATE OF SKETCH



MAP SHOWING SKETCH & LEGAL DESCRIPTION OF

A PART OF SECTION 32, TOWNSHIP 1 NORTH, RANGE 26 EAST, CITY OF JACKSONVILLE, DUVAL COUNTY, FLORIDA

(SEE SHEET 1 & 2 FOR COMPLETE LEGAL DESCRIPTION)

(SEE SHEET 3 FOR SKETCH)

CURVE TABLE					
CURVE #	LENGTH	RADIUS	DELTA	CHORD BEARING	CHORD
C1	36.81'	30.00'	70°18'30"	S11°35'43"W	34.55'
C2	141.39'	350.00'	23°08'45"	S11°59'10"E	140.43'
C3	54.17'	30.00'	103°27'40"	S52°08'38"E	47.11'
C4	39.27'	25.00'	90°00'00"	S44°35'12"W	35.36'
C5	38.71'	520.00'	4°15'55"	S19°20'20"W	38.70'
C6	55.38'	30.00'	105°45'58"	S69°25'31"W	47.84'
C7	51.87'	165.00'	18°00'39"	S25°32'51"W	51.65'
C8	60.43'	100.00'	34°37'31"	S17°14'25"W	59.52'
C9	38.29'	30.00'	73°08'09"	S36°38'25"E	35.75'
C10	29.46'	470.00'	3°35'29"	S70°29'49"W	29.46'
C11	29.34'	30.00'	56°01'52"	S27°56'36"W	28.18'

CURVE TABLE					
CURVE #	LENGTH	RADIUS	DELTA	CHORD BEARING	CHORD
C12	47.12'	30.00'	90°00'00"	S45°04'20"E	42.43'
C13	34.94'	30.00'	66°43'26"	N56°33'57"E	33.00'
C14	34.76'	30.00'	66°22'59"	N56°23'43"E	32.85'
C15	34.72'	30.00'	66°18'17"	S57°15'39"E	32.81'
C16	34.72'	30.00'	66°18'17"	S57°15'39"E	32.81'
C17	47.12'	30.00'	90°00'00"	N44°35'12"E	42.43'
C18	314.69'	165.00'	109°16'34"	N54°13'29"E	269.12'
C19	67.29'	200.00'	19°16'34"	S80°46'31"E	66.97'
C20	47.12'	30.00'	90°00'00"	N44°35'12"E	42.43'
C21	19.54'	35.00'	31°59'28"	S16°24'32"E	19.29'

LINE TABLE		
LINE #	LENGTH	DIRECTION
L1	469.07'	S17°25'11"W
L2	190.09'	S34°08'15"E
L3	133.33'	S77°54'37"E
L4	22.73'	N84°17'28"E
L5	7.24'	N76°03'29"E
L6	145.07'	S78°05'11"E
L7	89.89'	S61°11'37"E
L8	102.26'	S54°23'44"E
L9	99.59'	S43°45'06"E
L10	858.40'	S00°24'48"E
L11	41.51'	S62°34'35"W
L12	120.00'	S89°35'12"W
L13	176.22'	S00°24'48"E
L14	60.00'	S89°35'12"W
L15	10.00'	S00°24'48"E

LINE TABLE		
LINE #	LENGTH	DIRECTION
L16	95.00'	S89°35'12"W
L17	470.00'	N00°24'48"W
L18	120.00'	S89°35'12"W
L19	13.12'	N00°24'48"W
L20	60.00'	S89°35'12"W
L21	141.59'	S89°39'23"W
L22	60.30'	N10°00'32"E
L23	188.89'	N72°47'38"W
L24	275.73'	N68°31'42"W
L25	117.63'	N86°05'41"W
L26	423.71'	S07°15'38"E
L27	131.89'	S89°55'40"W
L28	10.95'	S29°18'27"W
L29	302.95'	S00°04'20"E
L30	132.98'	S00°24'48"E

LINE TABLE		
LINE #	LENGTH	DIRECTION
L31	60.00'	S17°42'26"E
L32	126.30'	S00°24'48"E
L33	106.89'	N89°55'40"E
L34	184.67'	S66°47'47"E
L35	192.66'	N89°35'12"E
L36	193.28'	N65°53'29"E
L37	104.04'	N89°35'12"E
L38	50.45'	N00°24'48"W
L39	180.00'	N89°35'12"E
L40	9.51'	N00°24'48"W
L41	120.00'	N89°35'12"E
L42	30.31'	S00°24'48"E
L43	37.12'	S32°24'16"E
L44	449.70'	N89°48'00"E

SHEET 4 OF 4

PERRET AND ASSOCIATES, INC.

1484 MONTICELLO ROAD, JACKSONVILLE, FLORIDA 32207 ~ (904) 805-0030 ~ FAX (904) 805-9888

GENERAL NOTES:

- BEARINGS SHOWN HEREON ARE BASED ON THE EAST LINE OF SECTION 32 AS S00°05'11"E, PER NAD83 (2011) FLORIDA STATE PLANE, EAST ZONE COORDINATES.
- THIS SKETCH DOES NOT PURPORT TO BE A BOUNDARY SURVEY.
- UNDERGROUND UTILITIES SERVING THIS PROPERTY HAVE NOT BEEN LOCATED OR SHOWN.
- IT IS THE LENDER'S RESPONSIBILITY TO DETERMINE FEMA F.I.R.M. MAP STATUS FOR THE LIFE OF THE LOAN ON THE PROPERTY SHOWN ABOVE. SURVEYOR HEREON WILL CONFIRM FOR ADDITIONAL FEE.

- LEGEND**
- P.C. POINT OF CURVATURE
 - P.T. POINT OF TANGENCY
 - P.R.C. POINT OF REVERSE CURVE
 - P.C.C. POINT OF COMPOUND CURVE
 - P.O.C. POINT ON CURVE
 - P.R.M. PERMANENT REFERENCE MONUMENT
 - P.C.P. PERMANENT CONTROL POINT
 - B.R.L. BUILDING RESTRICTION LINE
 - C.L.F. CHAIN LINK FENCE
 - R.W. RIGHT-OF-WAY
 - O.R.B. OFFICIAL RECORDS BOOK
 - O.L. ON LINE
 - BREAK LINE

- R RADIUS
- Δ or D DELTA (CENTRAL ANGLE)
- A or L ARC LENGTH
- C or CH CHORD
- CB CHORD BEARING
- (R) LINE RADIAL TO CURVE
- (A/C) AIR CONDITIONER
- CONC. CONCRETE
- FD. FOUND
- (I.P.) IRON PIPE
- (M) MEASURED
- (D) DEED
- FENCE



SCALE 1"=800'
06-17-2022
DATE OF SKETCH

LB ~ 6715