

LEGEND

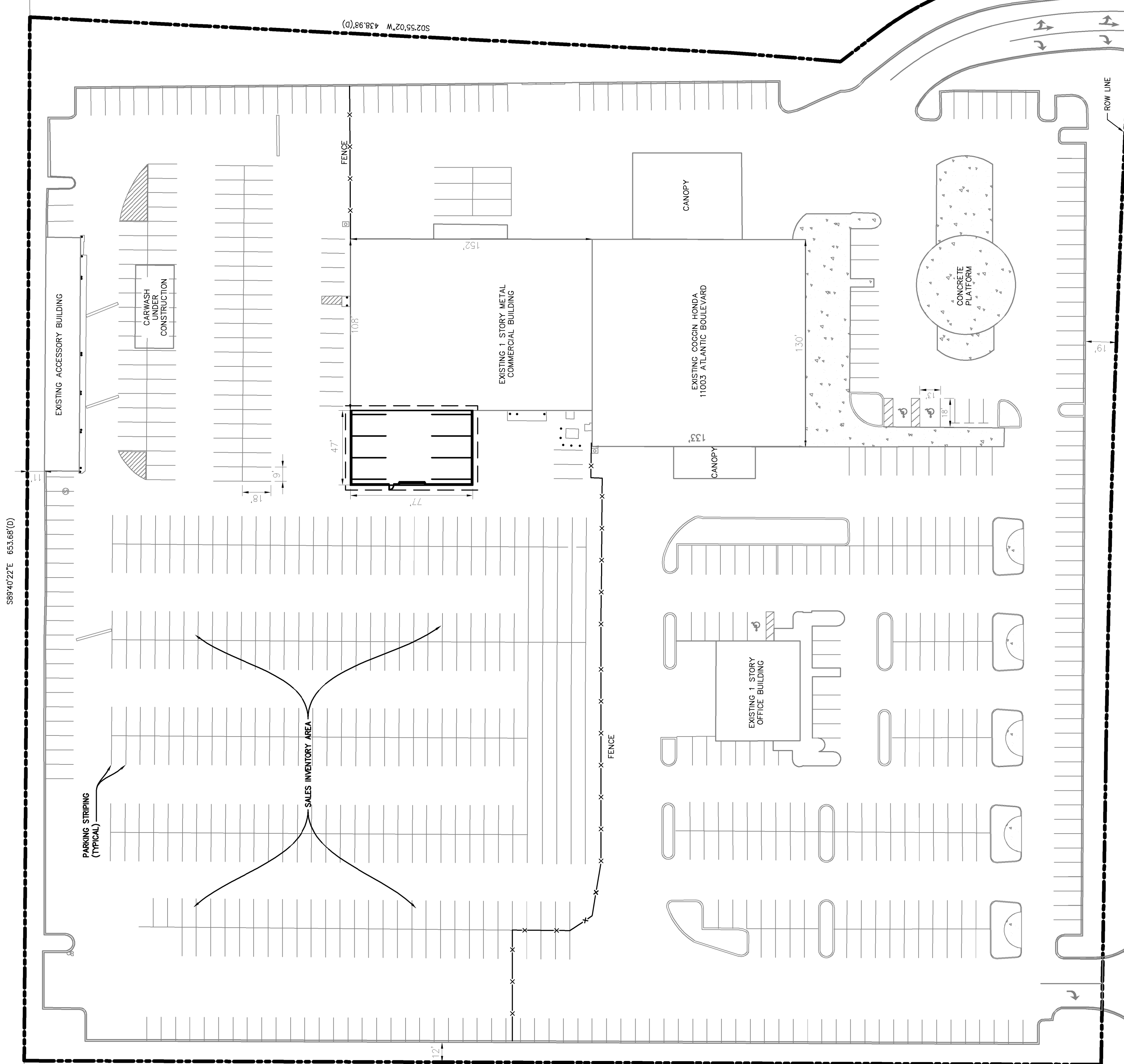
- PROPERTY BOUNDARY
- x—x—x—x— FENCE
- - - - - PROJECT LIMITS

O.R.B. 16711 PAGE 1193

PUD ORDINANCE: 1986-0763-501

O.R.B. 17794 PAGE 1825

PUD ORDINANCE: 2016-0604-E



SITE DATA

PARCEL ID - 162229-100
 ZONING ORDINANCE - #2000-0155-E
 PARCEL AREA - 9.88 AC
 BUILDING AREA -
 SALES BUILDING - 17,330 SF
 SERVICE GARAGE - 16,277 SF
 SHOP EXPANSION - 3,592 SF
 CAR WASH - 1,242 SF
 TOTAL AREA - 38,441 SF
 MINIMUM SETBACKS
 FRONT - 0 FT
 SITE - 0 FT
 REAR - 10 FT

PARKING DATA

REQUIRED PARKING
 SALES BUILDING
 3 SPACES PER 1,000 SF
 AREA = 17,330 SF
 REQUIRED SPACES = 51
 SERVICE GARAGE
 5 SPACES PER 1,000 SF
 AREA = 16,277 SF
 REQUIRED SPACES = 81
 SALES BUILDING
 5 SPACES PER 1,000 SF
 AREA = 3,592 SF
 REQUIRED SPACES = 16
 295 SPACES PROVIDED



© 2018 KIMLEY-HORN AND ASSOCIATES, INC.
 12740 GRAN BAY PARKWAY WEST, SUITE 2350
 JACKSONVILLE, FLORIDA 32258
 PHONE: 904-828-3900
 WWW.KIMLEY-HORN.COM CA 00000696

COGGIN HONDA SHOP EXPANSION
JACKSONVILLE, FLORIDA SEPTEMBER 2019