

Exhibit 1
Table of Contents

<u>Item #</u>	<u>Page</u>
(i) and (ii)	Pages 3-4 of 10
(iii)	Page 6 of 10
(iv)	Page 8 of 10
(v)	Page 10 of 10

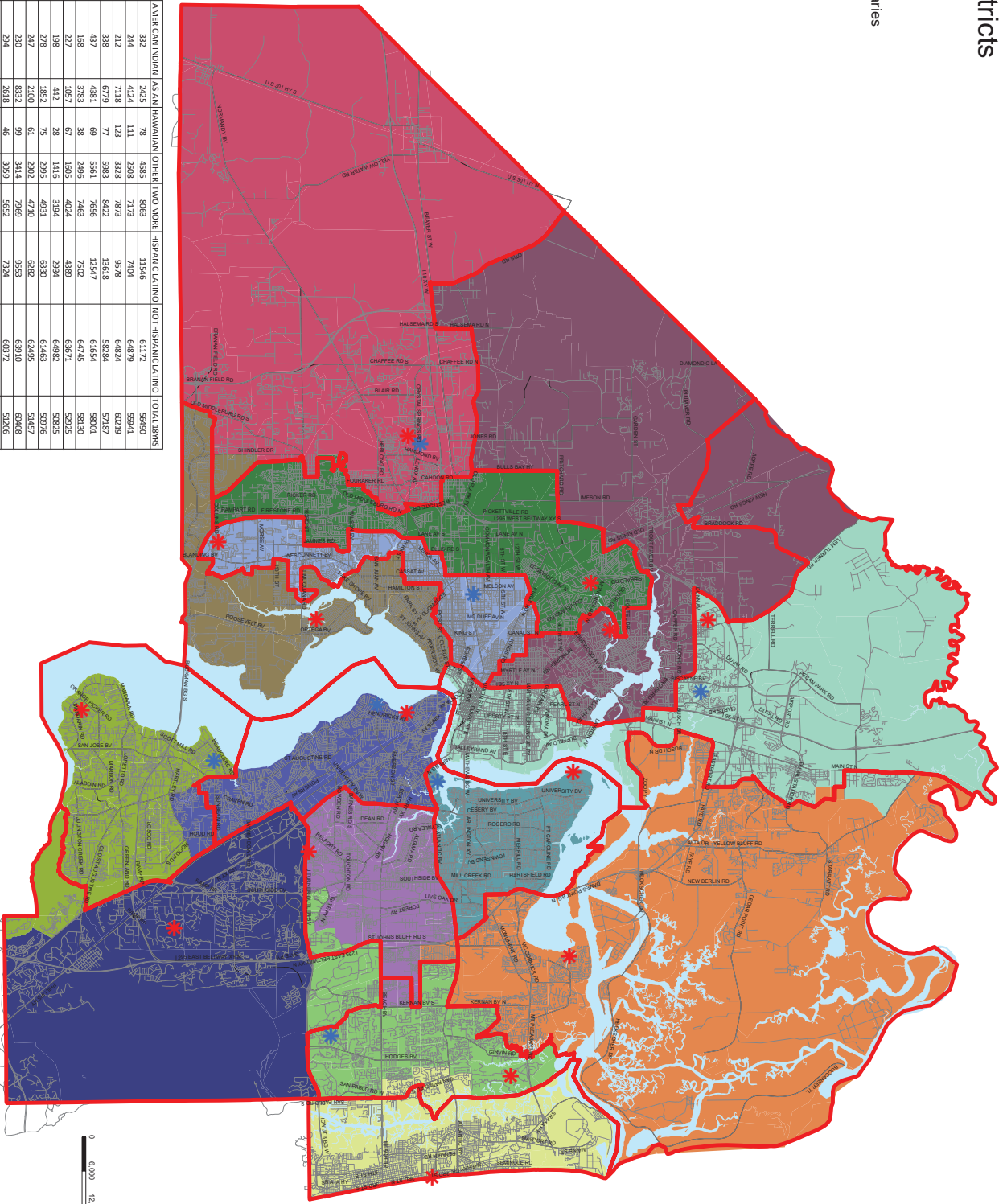
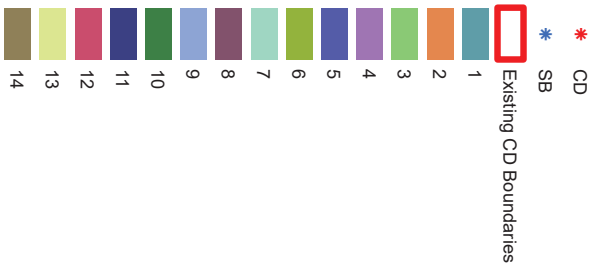
Exhibit 1

- (i) A map of the General Services District showing both the existing District and At-Large boundaries and the proposed District and At-Large boundaries; and

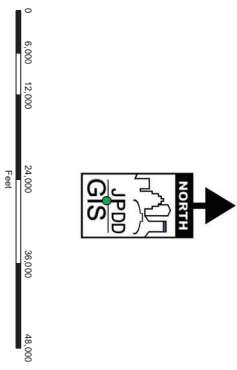
- (ii) A table indicating the population of each proposed District and At-Large and the variations of each such population from the population average for all the districts, with an explanation of the variation in each district.

City Council Districts

DRAFT



COUNCIL DISTRICT	TOTAL POPULATION	WHITE	BLACK	AMERICAN INDIAN	ASIAN	HAWAIIAN	OTHER	HONOLULU	HISPANIC/LATINO	NORTH HISPANIC/LATINO	TOTAL SPNS
1	72,983	44,693	13,200	244	4,024	111	2,698	7,124	74,066	6,487	55,404
2	74,802	47,720	8,828	212	7,118	123	3,328	7,872	95,786	6,824	60,719
3	71,902	37,899	12,404	338	6,779	77	5,983	8,422	13,818	5,928	57,827
4	74,201	43,601	12,897	437	4,381	69	5,951	7,556	12,447	6,675	58,001
5	72,247	52,933	5,866	168	3,783	38	2,986	7,418	7,502	4,989	58,130
6	68,060	20,827	40,253	227	1,057	67	1,605	4,024	4,389	6,971	52,925
7	67,916	16,594	46,044	198	442	28	1,416	3,194	2,934	6,482	50,925
8	67,793	18,917	38,745	278	1,852	61	2,995	4,931	6,330	5,147	50,976
9	68,777	18,706	40,051	247	2,000	65	2,902	4,710	6,282	5,445	50,976
10	74,463	42,199	11,200	290	8,332	99	3,414	7,969	9,533	6,937	60,408
11	67,966	35,396	20,871	261	19,010	46	3,059	6,109	73,241	6,149	51,706
12	73,964	58,605	4,987	261	19,010	46	3,059	6,109	59,888	6,975	61,499
13	70,145	44,800	13,319	246	2,536	78	2,923	6,241	76,941	6,241	56,339
14	99,567	51,428	29,337	372	4,967	1,079	4,470	8,940	112,889	8,828	78,613

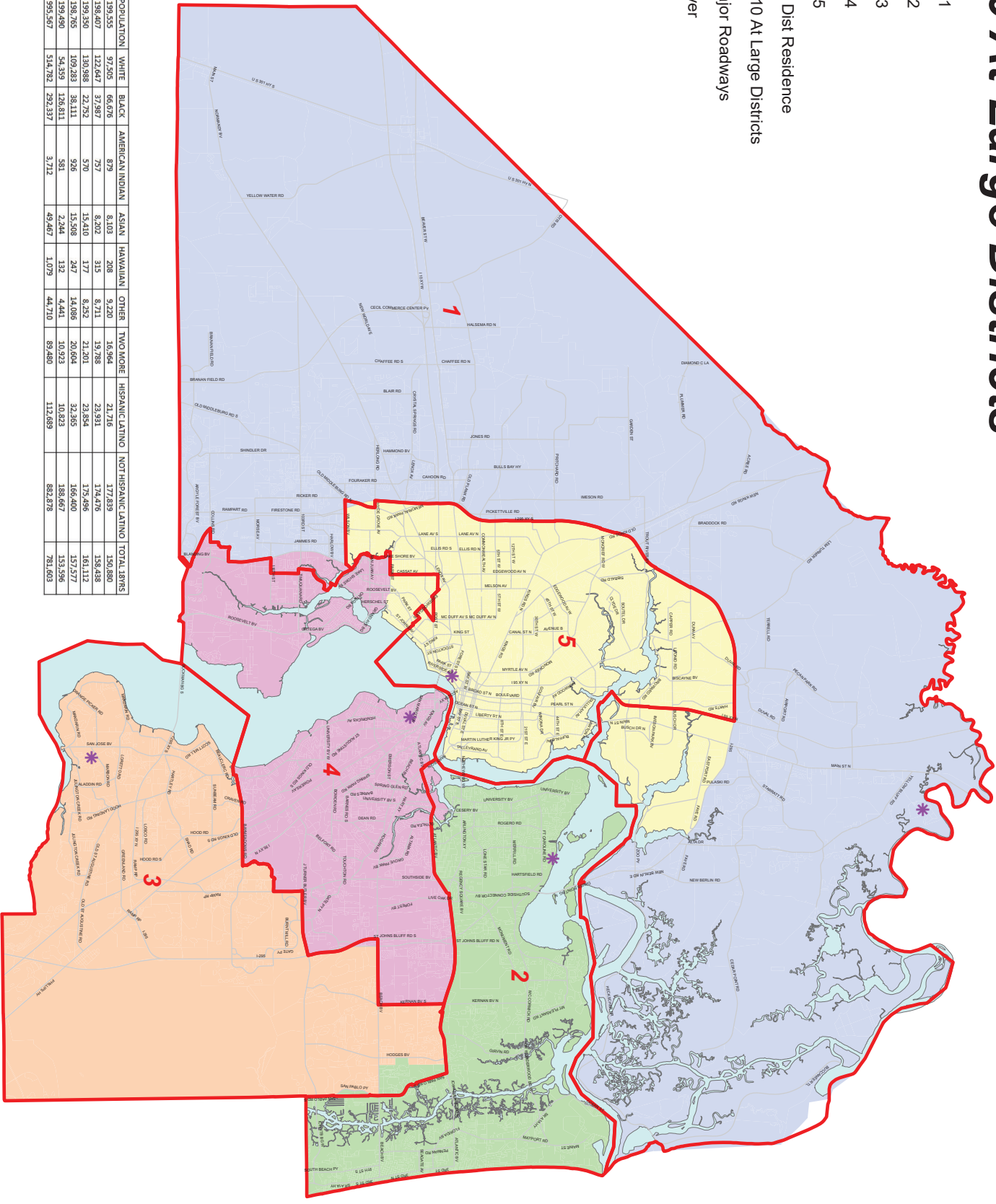


Developed by James S. G. Hartzler, GIS Analyst
December 7, 2021 11:52:03 AM
Content intended for illustrative purposes only.

2020 At-Large Districts

DRAFT

- AL1
- AL2
- AL3
- AL4
- AL5
- * AL Dist Residence
- 2010 At Large Districts
- Major Roadways
- River



DIST	TOT POPULATION	WHITE	BLACK	AMERICAN INDIAN	ASIAN	HAWAIIAN	OTHER	TWO MORE	HISPANIC/LATINO	NOT HISPANIC/LATINO	TOTAL BRNS
AL1	199,555	97,505	66,676	879	8,103	208	9,220	16,964	21,716	177,839	130,680
AL2	198,407	123,647	37,887	757	8,202	315	8,711	19,788	23,931	174,476	138,438
AL3	199,350	130,088	22,782	570	15,410	177	8,352	21,201	23,884	175,496	161,113
AL4	199,705	109,283	39,111	998	15,398	247	4,688	20,604	32,985	166,720	157,277
AL5	199,490	54,359	126,911	581	2,244	152	4,441	10,923	18,663	180,827	153,295
TOTAL	995,507	514,782	292,337	3,772	49,467	1,079	44,710	69,480	112,689	882,818	781,680

Developed by James M. Reed AICP - /jreed@co.jnet
 Content intended for illustrative purposes only.
 December 7, 2021

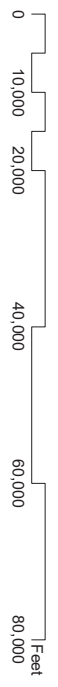


Exhibit 1

- (iii) A statement of methodology used in arriving at the particular plan recommended by the Special Committee on Redistricting.

Statement of Methodology

The methodology used in arriving at the proposed Jacksonville City Council District and Group At-Large Residence Area Plans recommended by the Redistricting Committee is as follows:

The proposed districts and areas were designed to satisfy all applicable criteria as set forth in the City Charter, Ordinance Code and applicable law.

Preliminary technical analysis was performed using the U.S. Census Bureau 2020 Data provided by the City of Jacksonville's Planning and Development Department, previous redistricting records (including information from 2011), and pertinent City Ordinances from the Jacksonville City Council's Research Office. Also, extensive research of the City Charter along with related legal, political, statistical, and historical information was completed to provide a foundation for the redistricting process and to provide assistance to all of the parties involved in the redistricting.

The U.S. Census Bureau 2020 data was downloaded from the U.S. Census Bureau website and included total population, voting age population, and racial composition for Duval County. Traditional redistricting concepts of compactness, contiguity, and consideration for communities of interest as defined in the City Charter were also used to create balanced plans for review by the Redistricting Committee. In addition, a formula was used where the population of the largest council district could not exceed 110% of the population of the smallest council district.

Originally, the Planning and Development Department divided Council District 2 at the St. Johns River and began to redistrict the Council Districts using this methodology; however, several Council Members rejected the idea. Thus, Council District 2 was combined to its original 2011 boundary and the redistricting continued under this circumstance.

The City's Planning and Development Department, along with the Office of General Counsel conducted individual meetings with all of the City Council members to gather information regarding the expected changes to each of the districts. The Redistricting Committee also held several public meetings and workshops throughout the process. During those meetings input from public officials and private citizens played an integral role in the redistricting process. Most importantly, specific directions from the Redistricting Committee, along with recommendations from all of the City Council Members, advice from the City of Jacksonville Office of General Counsel, and weekly meetings with the City Planning and Development Department, were the primary factors in creating the plan recommended for the new City Council districts.

Residence requirements for incumbent School Board members were also considered during the City Council redistricting process.

The Proposed Jacksonville City Council District and Group At-Large Residence Area Plans, as approved for submittal by the Redistricting Committee on October 28, 2021, are the culmination of numerous recommendations made by City Council Members, and testimony from the public. The City Council District map, along with a City Council Group At-Large Residence Area map were revised based on the changes requested and presented to the Redistricting Committee for their review and comments.

The geographic configuration of Duval County with the St. Johns River coursing through the heart of the City of Jacksonville, coupled with significant population growth south and east of the river, presented unique technical challenges to create a City Council District Map that adhered to the redistricting criteria as outlined in this report.

Exhibit 1

(iv) An appendix of any other redistricting plans considered or created by the Special Committee on Redistricting in the process of creating the recommended plan, with the reasons for rejection of each such redistricting plan.

(a.) **Countywide Proposal Version 4 – Sept 27, 2021 Committee Meeting**

Page 8 of 10

Reasons of Rejection: This map was rejected because there was disagreement on the new boundary between CD 8 and CD 12 and CD 7 and CD 2. Also, the boundaries south of the river were not agreed on.

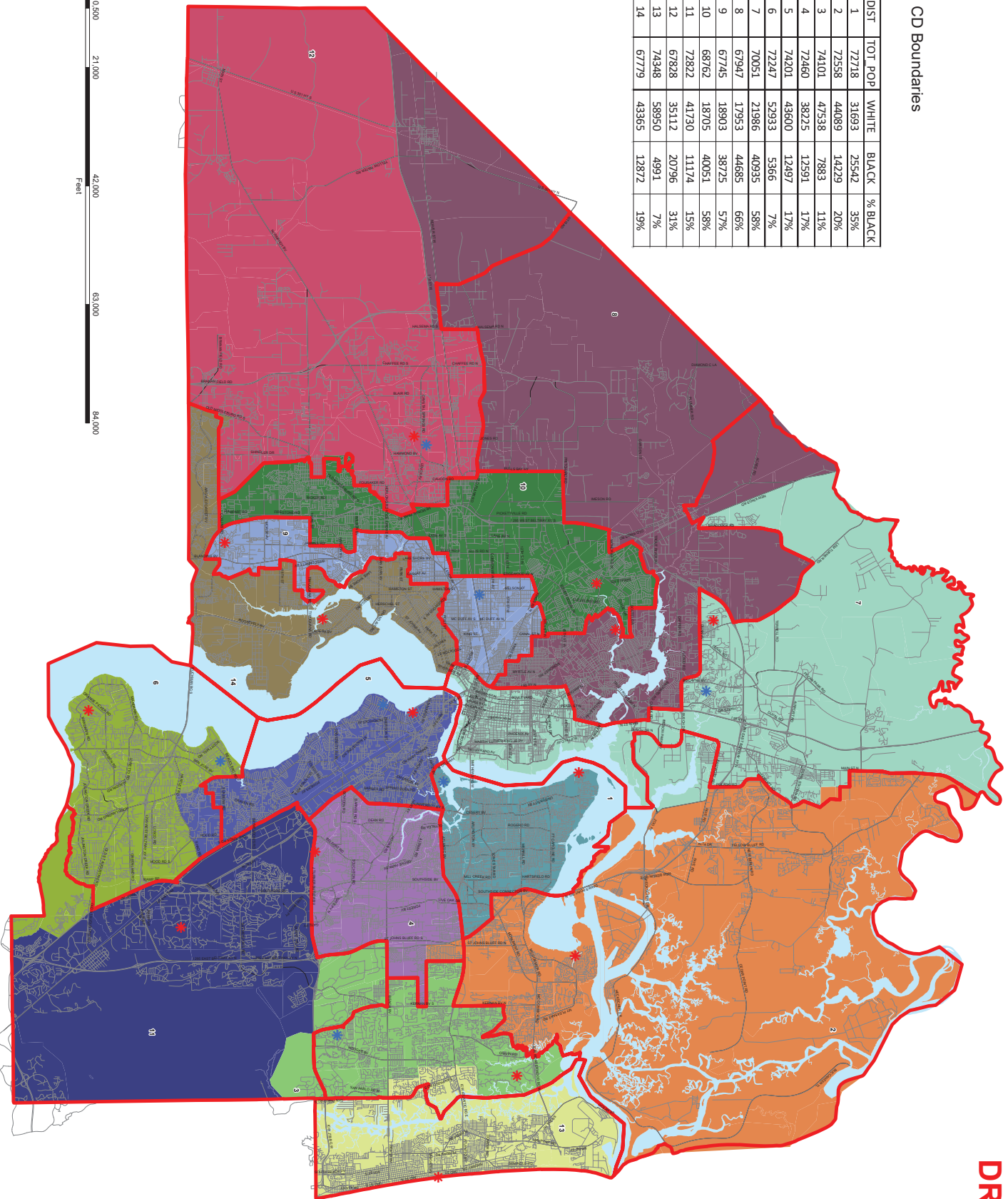
City Council Districts

DRAFT1

- * CD
- * SB
- Existing CD Boundaries

DIST	TOT POP	WHITE	BLACK	% BLACK
1	72718	31693	25542	35%
2	72558	44089	14229	20%
3	74101	47538	7883	11%
4	72460	38225	12591	17%
5	74201	43600	12497	17%
6	72247	52933	5366	7%
7	70051	21986	40935	58%
8	67947	17953	44685	66%
9	67745	18903	38725	57%
10	68762	18705	40051	58%
11	72822	41730	11174	15%
12	67828	35112	20796	31%
13	74348	58950	4991	7%
14	67779	43855	12872	19%

- 1
- 2
- 3
- 4
- 5
- 6
- 7
- 8
- 9
- 10
- 11
- 12
- 13
- 14



Drafted by: Howard Saffari, hsa@cityofjax.com
 2020 Districts Review - 5/20/20 US Census data
 September 23, 2021
 Content intended for illustrative purposes only

Exhibit 1

- (v) Comments and recommendations deemed necessary or advisable by the Special Committee on Redistricting to explain or illustrate the plan.

Comments and recommendations:

Early in the process, the Special Committee on Redistricting (“The Committee”) started with the premise of working from the current Council Districts and At-Large Residence Areas rather than start over completely. The Committee further refined its considerations and directed the Planning and Development Department to base district numbers on total population; adhere to the normal redistricting schedule timeline provided in the Ordinance Code so as not to expedite the process in an attempt to complete prior to 2022 election cycle; try to minimize river crossings to the extent possible; and to avoid drawing sitting Council Members and School Board members out of their current districts. The Committee believes that the Proposed Plan meets these considerations to the extent possible to achieve new Districts and At-Large boundaries based on the Census Data for 2020.