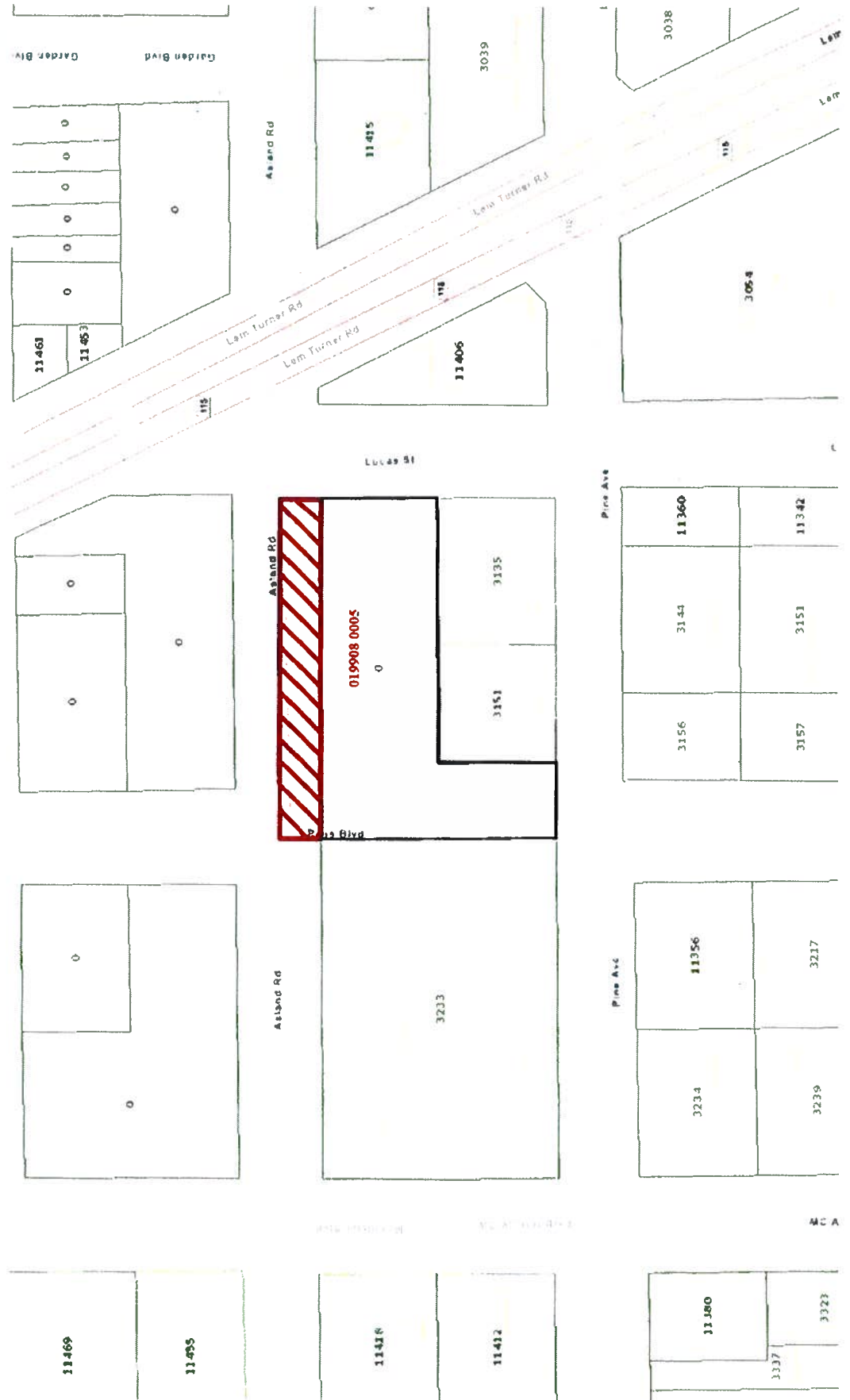
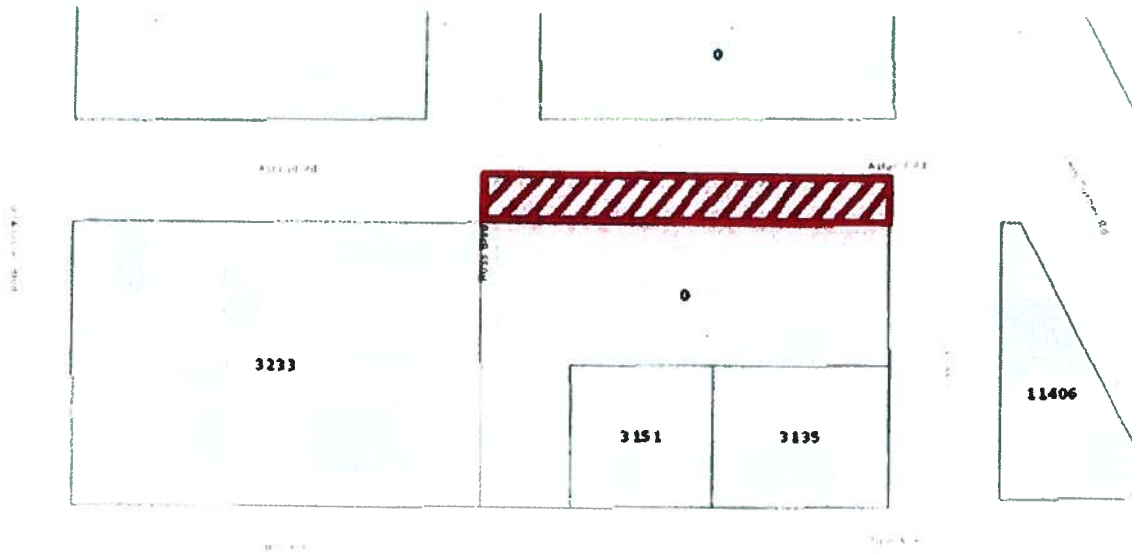


019908-0005
Ashland Rd
Location Map



019908-0005
Ashland Rd
Aerial Map





*The City of Jacksonville provides no warranties, express or implied, concerning the accuracy, completeness or reliability or suitability of this location map for any particular use.

The South half of Asland Road lying Northerly of Lots 1, 2, 3, 4, 5, 6, 7, 8, 9, and 10 Block 16, Garden City, a subdivision according to the plat thereof recorded in Plat Book 5, page 81, and lying northerly of the East 40ft of Ross Boulevard, a closed right of way, recorded in Official Records Book 9724 page 2291 lying Easterly of Lots 1 and 20 Block 16 of Garden City, all of the public records of Duval County, Florida.

APPROVED
 DESCRIPTION AGREES
 WITH MAP
 CITY ENGINEERS OFFICE
 TOPO/SURVEY BRANCH
 By SCC Date 10/26/22