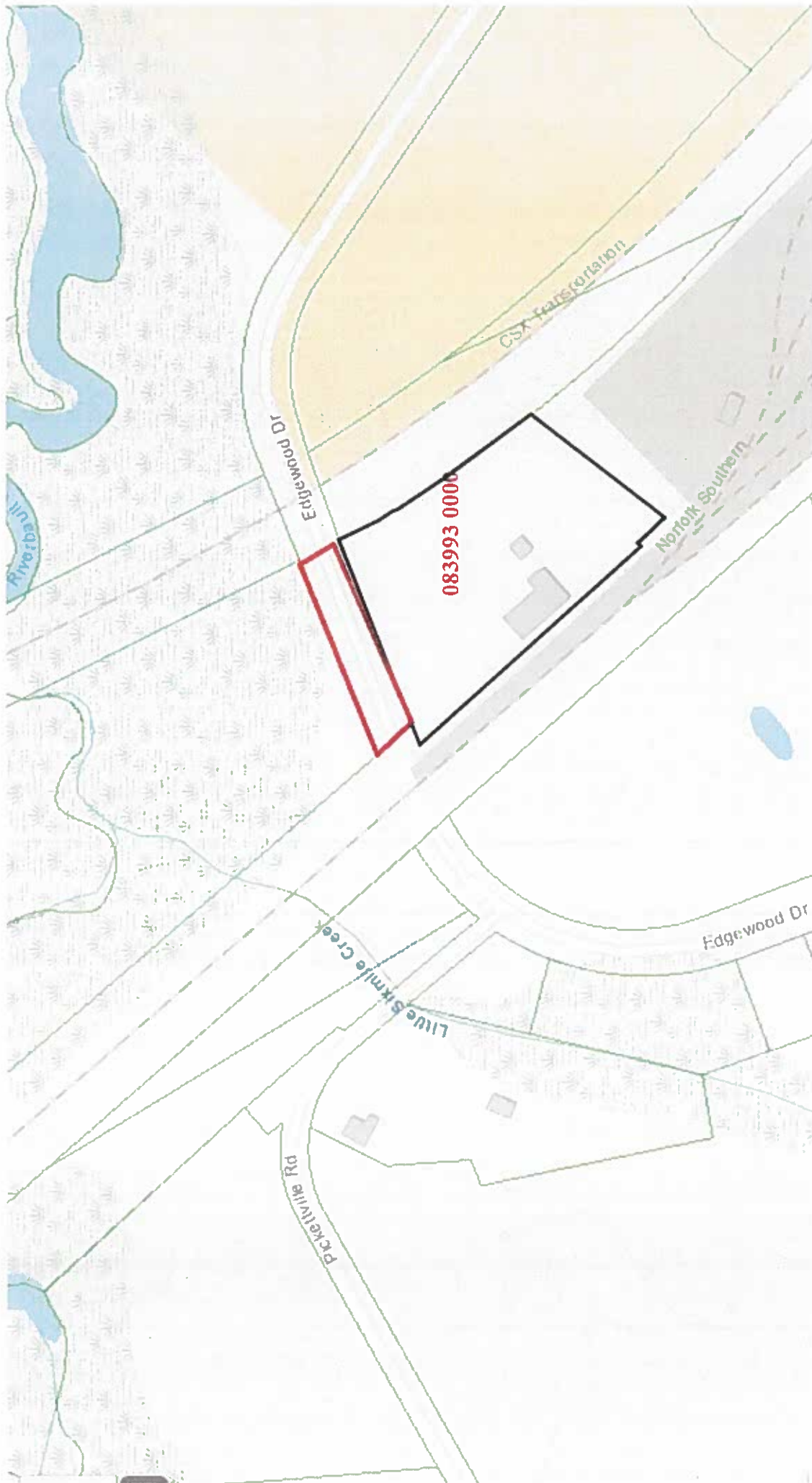


Street Name View Edgewood Drive Closure



Satellite Aerial – Aerial landscape view Edgewood Drive Closure



Street Map



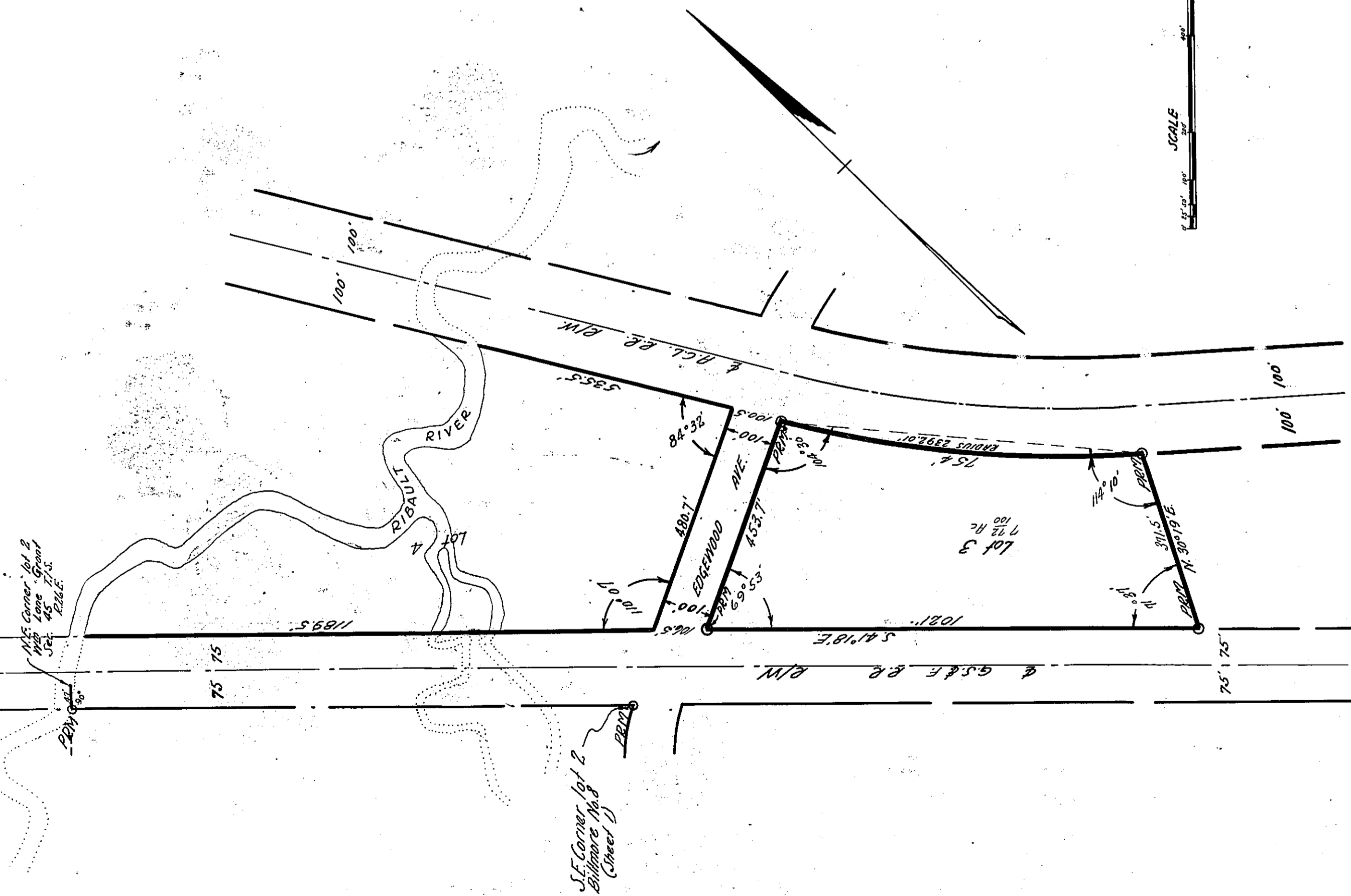
A PORTION OF EDGEWOOD AVENUE, NOW KNOWN AS EDGEWOOD DRIVE, LYING BETWEEN THE EASTERN EDGE OF THE G.S. & F. RAILROAD RIGHT OF WAY AND THE WESTERN EDGE OF THE A.C.L. RAILROAD RIGHT OF WAY, AS SHOWN ON THE PLAT OF BILTMORE NO 8A, AS RECORDED IN PLAT BOOK 14, PAGE 19 OF THE CURRENT PUBLIC RECORDS OF DUVAL COUNTY FLORIDA

APPROVED
DESCRIPTION AGREES
WITH MAP
CITY ENGINEERS OFFICE
TOPO/SURVEY BRANCH
By *[Signature]* Date 5-5-21

ADOPTION & DEDICATION

BILTMORE No 8A

Being a part of lot 1 W22 Lane Grant Sec. 45, T15, R26E, Duval County Fla. More particularly described as beginning at a point of intersection of the NE 1/4 R1W line of the G.S. & F. R.R. with the S1/4 shore of Ribault River or Six Mile Creek, thence S 41° 18' E along the NE 1/4 R1W line of the G.S. & F. R.R. 2317', thence N 30° 19' E 371.5' to a point in the S1/4 R1W line of the A.C.L. R.R., thence N 1/4 along the same a distance of 1390' to its intersection with the S1/4 shore line of Ribault River, thence N 1/4 along the same to the point of beginning.



THIS IS TO CERTIFY that the CURTISS-BRIGHT CO. a corporation under the laws of the State of Florida is the lawful owner of the lands described in the caption hereof, and that it has caused the same to be surveyed and subdivided and this plat made in accord-
 ance with said survey is hereby adopted as the true and correct plat of said lands, and all streets shown upon said plat are hereby irrevocably and without reservation dedicated to the County of Duval and its successors. In witness whereof the CURTISS-BRIGHT CO. has caused these presents to be signed by its president and secretary respectively by and with authority of its Board of Directors in its name and with its corporate seal affixed this 24 day of April A.D. 1929

James H. Bright
 President
H. B. Sanford
 Secretary

Signed and sealed
 in the presence of us
Alvin Simmons
 Witness
Flora M. Hoffner
 Witness

STATE OF FLORIDA }
 COUNTY OF DADE } S.S.

I HEREBY CERTIFY that on this 24 day of April A.D. 1929, personally appeared before me James H. Bright and H.B. Sanford, respectively, president and secretary of the CURTISS-BRIGHT CO. a corporation under the laws of the State of Florida, to me well known to be the persons described in and who executed the foregoing dedication and who severally acknowledged before me that they executed the same freely and voluntarily as such officers for the use and purposes therein expressed and that they affixed hereto the official seal of said corporation.

Anna M. DeLoe Simmons
 Notary Public State of Florida at large.
 My commission expires, August 26, 1931

THIS IS TO CERTIFY that the above plat is a correct representation of the lands, surveyed and platted and described above, that permanent reference monuments have been placed according to the laws of the State of Florida. Signed this 2nd day of April A.D. 1929

S.E. Corner lot 2
 Biltmore No. 8
 (Sheet 1)

Examined and approved this 10th day of May A.D. 1929
 Board of County Commissioners of Duval County Florida.

J. H. Harrison
 Chairman
Frank Brown
 Clerk

230-130-A

I HEREBY CERTIFY that this plat has been examined and that it complies in form with Chapter #10225 Laws of Florida of 1925 and is filed for record and recorded in Plat Book 14 at page 19 of the Public Records of Duval County, Florida this 14th day of May A.D. 1929.

Frank Brown
 Clerk
Alvin Simmons
 Deputy Clerk

