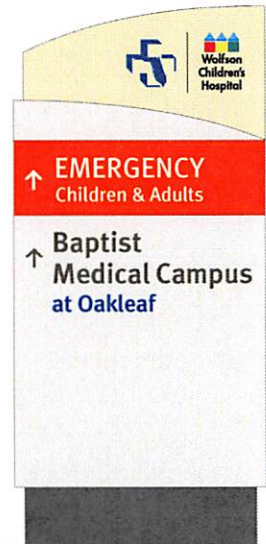
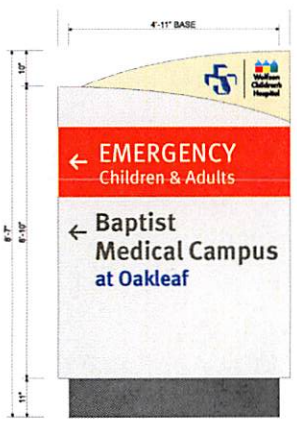
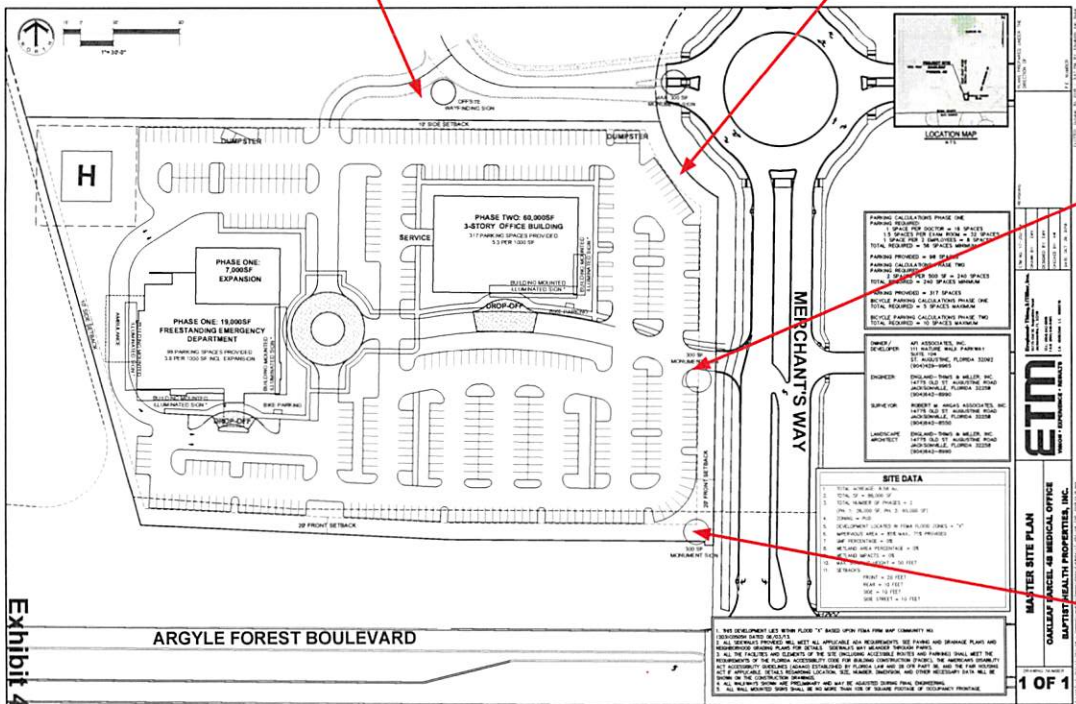


FRONT VIEW
1/4" = 1'-0"

SIDE VIEW
1/4" = 1'-0"





Note: the wall would be behind the black mesh fence in the photo.

Drawn By: Author
Checked By: Checker
Approved By: Approver

BUILDING MATERIALS & FINISH			BUILDING MATERIALS & FINISH		
MATERIAL INFORMATION	SYMBOL OR DESIGNATION	MATERIAL COLOR	MATERIAL INFORMATION	SYMBOL OR DESIGNATION	MATERIAL COLOR
DRAINABLE EPS - COLOR 1	PE-1	MATCH SHERWIN WILLIAMS DW 771 ON THE ROCKS	EXTERIOR H.M. DOORS AND FRAMES	PE-4	SHERWIN WILLIAMS - COLOR TO MATCH FIELD STO COLOR PACIFIC BROP
DRAINABLE EPS - COLOR 2	PE-2	MATCH SHERWIN WILLIAMS DW 788 SUMMIT GRAY	QUITTERS, DOWNPOUT & BRACKETS	QDS-1	MATCH PAC-CLAD COLOR "SILVER" METAL
SPANDREL GLASS			PRE-FINISHED ALUMINUM CORNING AND LOUVERS	AL-1	MATCH DURANAR 2 COAT COLOR "WOODIC CLEAR" (RUC 119429)
PRE-FIN ALUMINUM COMPOSITE METAL PANEL	ACM-1	MATCH - CUSTOM BLUE COLOR TO MATCH OWNER LOGO SELECTION	PRE-FINISHED ALUM. CORNING	AL-5	DURANAR 2 COAT TO MATCH CUSTOM BLUE COLOR OF OWNER LOGO SELECTION
PRE-FIN ALUMINUM COMPOSITE METAL PANEL	ACM-2	MATCH CENTRA 2 COAT "NECAL WHITE" #119	PRE-FINISHED ALUM. SUN BRIDES		MATCH CURTAIN WALL COLOR
PRE-FIN ALUMINUM COMPOSITE METAL PANEL	ACM-3	MATCH CENTRA 2 COAT "CHROMIUM GRAY" #101			
EXTERIOR ALUMINUM CURTAIN WALL FRAMING					
4" CMU VENEER - COLOR 1	CMU-1	CLASS 1 ANODIZED NATURAL ALUM. TERNWYTH - VARIATION - COLOR INCKEL PROVIDE SPECIAL SHAPES FOR FULL BLOCK APPEARANCE			
4" CMU VENEER - COLOR 2	CMU-2				

GENERAL NOTES FOR EXTERIOR ELEVATIONS

- 001 PAINT EXPOSED ROOF MOUNTED EQUIPMENT (PUMP, SCREENS, ETC.) IN A COLOR AS SELECTED BY THE ARCHITECT. EXCEPT THAT FRAMES WHICH ARE ALUMINUM OR SPANREL GLASS SHALL NOT BE PAINTED.
- 002 REFER TO EXTERIOR ELEVATION DRAWINGS FOR EXTERIOR WALL FINISHES.
- 003 THE COLOR OF THE FASCIA AT THE GRAVEL GUARD SHALL BE AS NOTED ON ELEVATION DRAWINGS.
- 004 PAINT EXTERIOR SURFACES OF HOLLOW METAL DOORS AND DOOR FRAMES IN A COLOR AS NOTED ON THE EXTERIOR ELEVATIONS.
- 005 PROVIDE WALL MOUNTED BACK-UP EMERGENCY SIGNALING ON THE EXTERIOR OF THE BUILDING. VENEER FOR EACH OF THESE SIGNS IS ROCKFORD ON SHEET A-01. AT MAIN ENTRANCE, PROVIDE ELECTRICAL CONNECTION AND PHOTOCELL. AT EMERGENCY ENTRANCE, PROVIDE ELECTRICAL CONNECTION AND PHOTOCELL. AT OUTPATIENT ENTRANCE, PROVIDE ELECTRICAL CONNECTION AND PHOTOCELL.



225 Water Street
Suite 2000
Jacksonville, FL 32202
904.332.8669
FIRM'S FLORIDA CERT. NO. ABR0000002
ID:20000797LC28000381



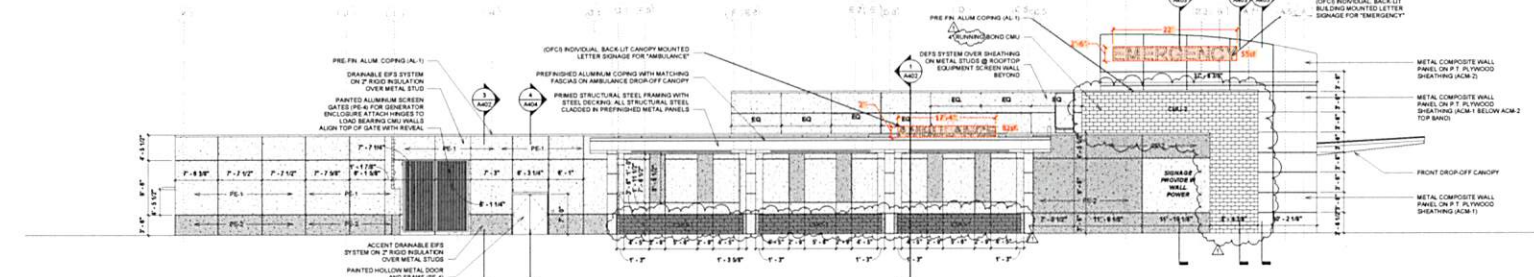
**BAPTIST MEDICAL CENTER SOUTH
OAKLEAF FREESTANDING
EMERGENCY DEPARTMENT**
JACKSONVILLE, FL
BAPTIST CLIN. NO. 56933
Florida AHCA Project Submission No. 137-1
Florida AHCA Client Code / File No. 2221960002

Issue & Revision Log		
No.	Date	Description
1	TBD	CCD No. 1

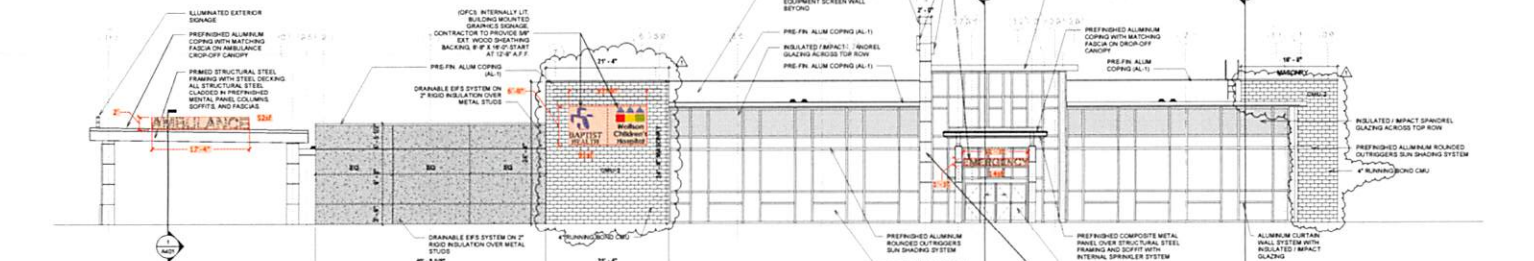
EXTERIOR ELEVATIONS

A301

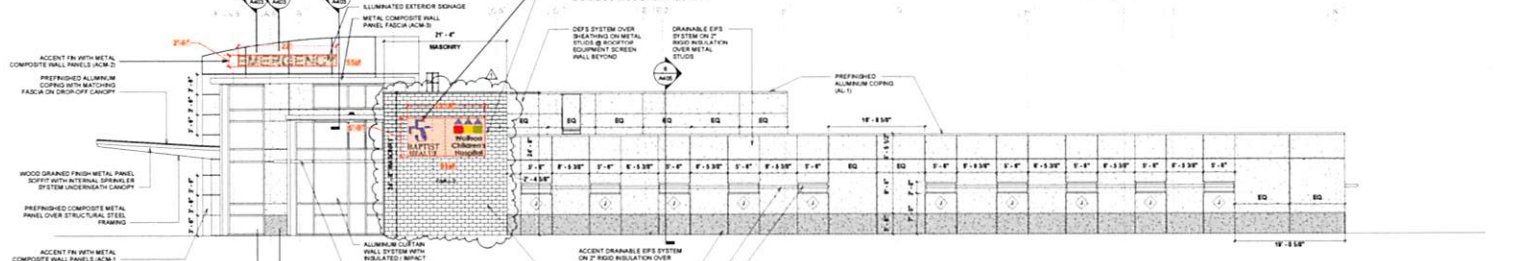
43387.01
1/15/2019



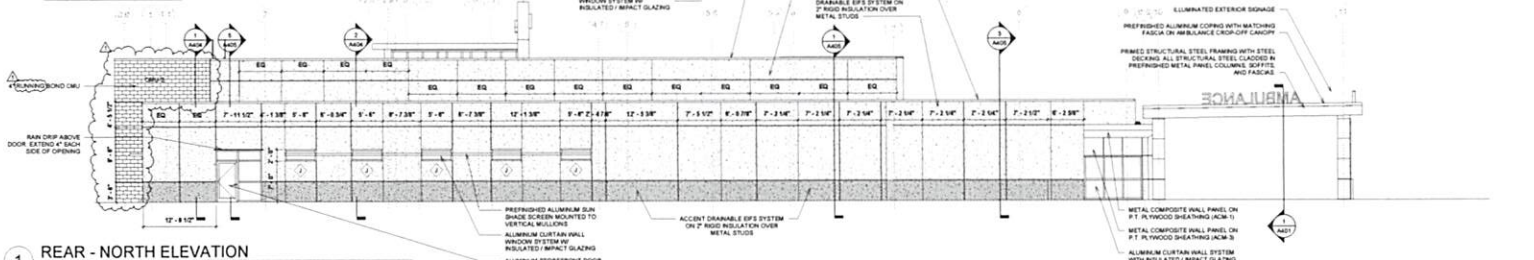
4 SIDE - WEST ELEVATION
Scale: 1/8" = 1'-0"



3 FRONT - SOUTH ELEVATION
Scale: 1/8" = 1'-0"



2 SIDE - EAST ELEVATION
Scale: 1/8" = 1'-0"



1 REAR - NORTH ELEVATION
Scale: 1/8" = 1'-0"

