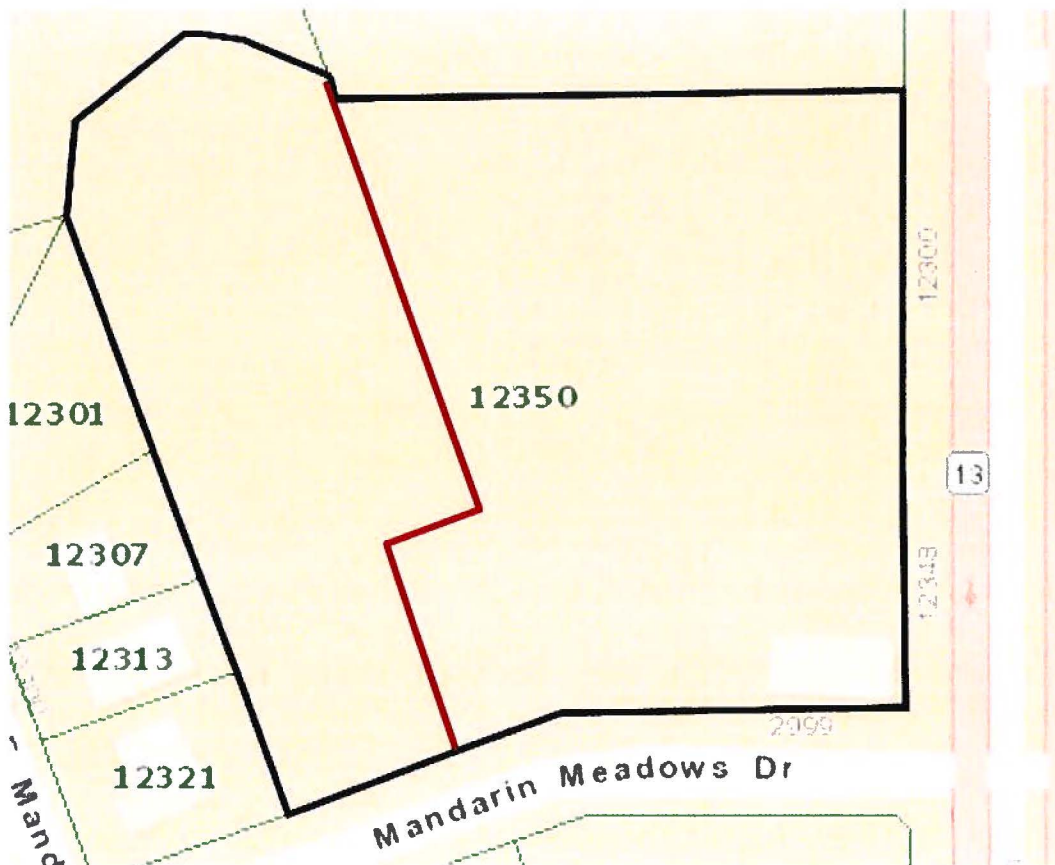


MANDARIN MEADOWS ESMT SKETCHES



MANDARIN MEADOWS UNIT NO. 2

CAPTION

Being a replat of Lots 15 thru 21 inclusive of Block 1, of Mandarin Meadows Replat as recorded in Plat Book 29 Page 67 of the Current Public Records of Duval County, Florida.

OR 3 d.

ADDITION AND DEDICATION

This is to certify that Mandarin Meadows Building & Development Corporation, a corporation under the laws of the State of Florida is the lawful owner of the lands described in the caption hereof and that it has caused the same to be surveyed and subdivided and this plat made in accordance with said survey is hereby adopted on the true and correct plat of said lands and all easements for drainage and utilities shown on said plat is hereby irrevocably and without reservation dedicated to the County of Duval and its successors.

In witness whereof Mandarin Meadows Building & Development Corporation has caused these presents to be signed by its President and Secretary respectively, by and with the authority of its Board of Directors, in its name and with its corporate seal affixed this 11th day of May, A.D. 1988 Signed and Sealed in the presence of:

Mr. Harold Florida Building & Development Corporation
[Signature]

[Signature]

STATE OF FLORIDA COUNTY OF DUVAL

I hereby certify that on this day personally appeared before me, an officer duly authorized to administer oaths and take acknowledgments L.H. Anderson and Marjorie B. McCracken respectively President and Secretary of Mandarin Meadows Building & Development Corporation a corporation under the laws of the State of Florida to me well known to be the persons described in and who executed the foregoing dedication and who personally acknowledged before me that they executed the same freely and voluntarily as such officers for the use and purpose herein expressed and that they affixed hereto the official seal of said corporation.

Witness my signature and official seal at Jacksonville in the County of Duval and State of Florida this 11th day of May, A.D. 1988

[Signature]
My Commission Expires April 8, 1991

COMMISSIONERS APPROVAL Examined and approved this 11th day of MAY, A.D. 1988 by the Board of County Commissioners of Duval County, Florida.

59-29662 JAYNE and Ed. Chairman

[Signature]

[Signature]

CLERK'S APPROVAL

I hereby certify that this plat has been examined and that it complies in form with Chapter No. 10779, Laws of Florida of 1985 and is filed for record and recorded in Plat Book 29, Page 67 of the Public Records of Duval County this 11th day of May, A.D. 1988

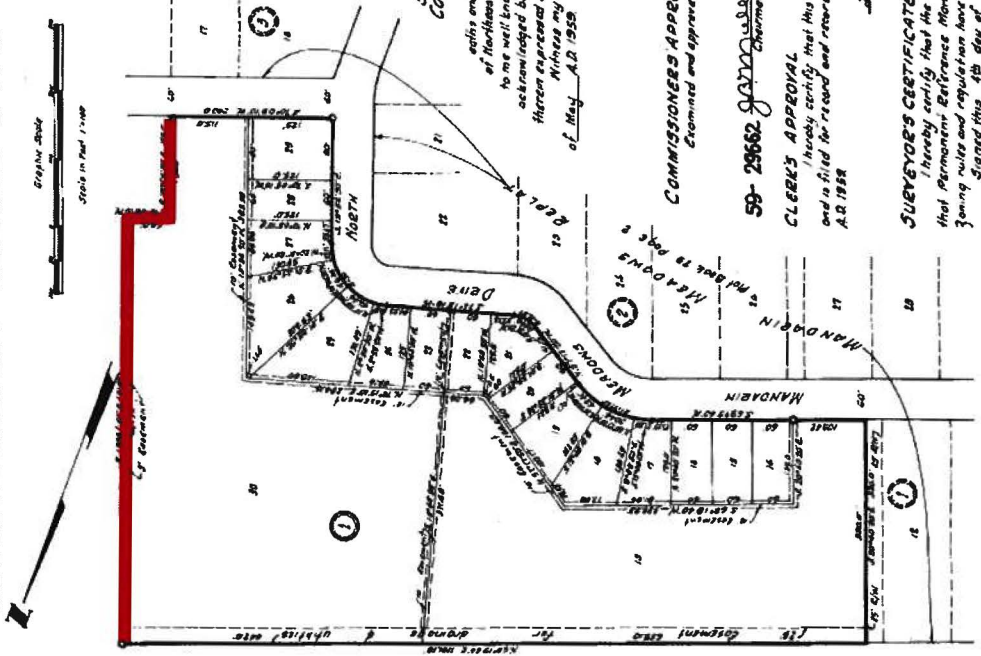
[Signature]

SURVEYOR'S CERTIFICATE

I hereby certify that the above plat is a correct representation of the lands surveyed and plotted and described above and that Permanent Reference Monuments have been placed according to the Laws of the State of Florida and that all the Duval County zoning rules and regulations have been complied with.

Signed this 11th day of May, A.D. 1988

[Signature]



Notes:
Easements and distances shown herein are based on bearings and distances.
Building restriction lines shown are for the 35-foot front lot setback.
Permanent Reference Monuments are shown thus:
All easements shown herein are for drainage and utilities.

THAT FIVE (5) FOOT DRAINAGE AND UTILITIES EASEMENT ALONG THE NORTHEASTERLY LINE OF LOT 30, BLOCK 1, MANDARIN MEADOWS UNIT NO. 2, AS RECORDED IN PLAT BOOK 29, PAGE 67 OF THE CURRENT PUBLIC RECORDS OF DUVAL COUNTY, FLORIDA

APPROVED
DESCRIPTION AGREES WITH MAP
CITY ENGINEERS OFFICE
TOPO/SURVEY BRANCH
By [Signature] Date 3/5/20