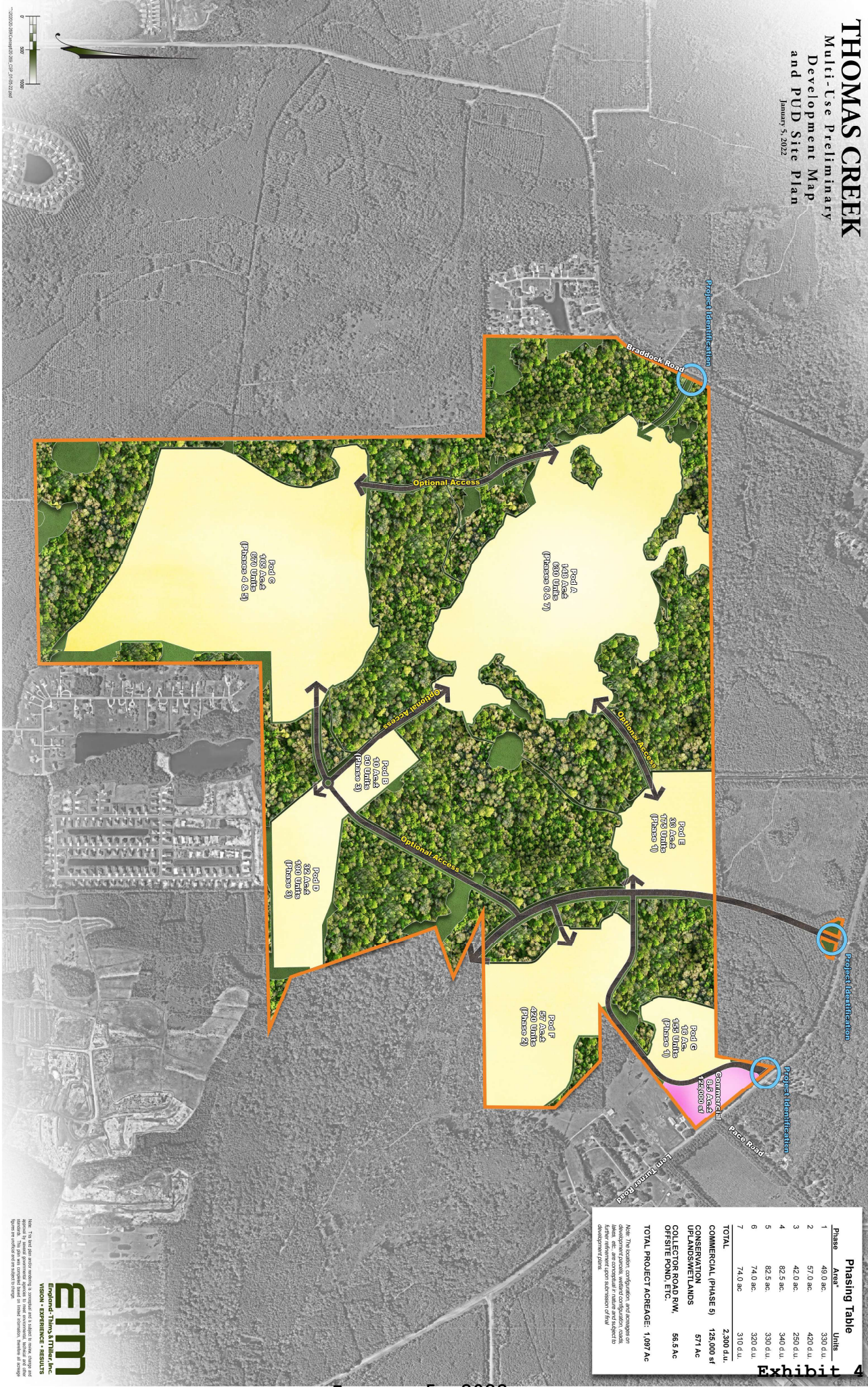


# THOMAS CREEK

Multi-Use Preliminary  
Development Map  
and PUD Site Plan  
January 5, 2022



Phase	Area*	Units
1	49.0 ac.	330 d.u.
2	57.0 ac.	420 d.u.
3	42.0 ac.	250 d.u.
4	82.5 ac.	340 d.u.
5	82.5 ac.	330 d.u.
6	74.0 ac.	320 d.u.
7	74.0 ac.	310 d.u.
<b>TOTAL</b>	<b>2,300 d.u.</b>	
<b>COMMERCIAL (PHASE 5)</b>	<b>125,000 sf</b>	
<b>CONSERVATION</b>	<b>571 Ac</b>	
<b>UPLANDS/MEADOWLANDS</b>	<b>571 Ac</b>	
<b>COLLECTOR ROAD P/W, OFFSITE POND, ETC.</b>	<b>56.5 Ac</b>	
<b>TOTAL PROJECT AREAGE:</b>	<b>1,067 Ac</b>	

\*Note: This location configuration and arrangement of development parcels, whether configuration, scale, shape, etc., are conceptual in nature and subject to change. All acreages are based on 100% density of 100 units per acre.

ETM  
Englehard Thomas ATTM, Inc.  
VISION • EXPERIENCE • RESULTS