



VICINITY MAP
(NOT TO SCALE)

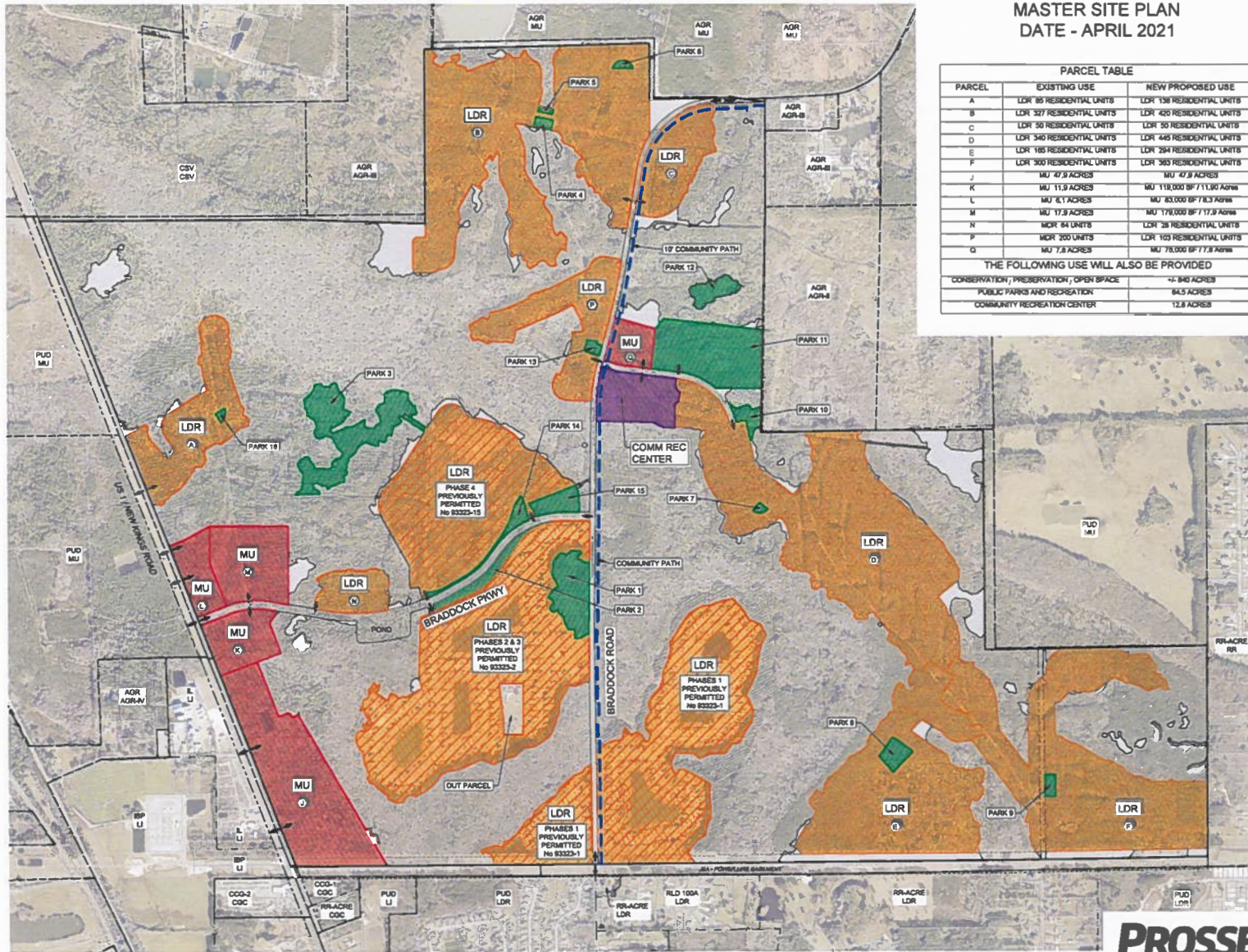


LEGEND

- WETLAND CONSERVATION
- UPLAND CONSERVATION
- PARK AREA
- PREVIOUSLY PERMITTED
- MU - MULTI USE
- LDR - LOW DENSITY RESIDENTIAL
- LI - LIGHT INDUSTRIAL
- COMMUNITY RECREATION CENTER
- VILLAGE DESIGNATION
- ZONING LAND USE
- APPROXIMATE ACCESS POINT
- 10' COMMUNITY PATH

COMMUNITY PATHS:
THE INTENT IS FOR THE COMMUNITY PATHS TO INTERCONNECT PUBLIC USES AND PARKS WITH SHOPPING AND RESIDENTIAL AREAS. THE LOCATION OF THE PATHS ON THIS PLAN IS CONCEPTUAL AND MAY VARY AT THE TIME OF FINAL SITE PLANNING. IT IS THE DEVELOPER'S INTENT, HOWEVER, TO CREATE A ROADWAY SECTION THAT ALLOWS FOR THE MAJOR ROADS TO HAVE A WIDER RIGHT-OF-WAY ON THE EDGE CONTAINING THE COMMUNITY PATH TO SEPARATE PATH USERS FROM TRAFFIC. THE RIGHT-OF-WAY ADJACENT TO THE WETLAND EDGE WILL BE NARROWER TO MINIMIZE ENVIRONMENTAL IMPACTS.

NATURE TRAILS:
THE INTENT IS FOR THE NATURE TRAILS TO INTERCONNECT PUBLIC USES AND PARKS WITH SHOPPING AND RESIDENTIAL AREAS. THE LOCATION OF THE TRAILS ON THIS PLAN IS CONCEPTUAL AND MAY VARY AT THE TIME OF FINAL SITE PLANNING.



**MASTER SITE PLAN
DATE - APRIL 2021**

PARCEL TABLE		
PARCEL	EXISTING USE	NEW PROPOSED USE
A	LDR 85 RESIDENTIAL UNITS	LDR 138 RESIDENTIAL UNITS
B	LDR 327 RESIDENTIAL UNITS	LDR 420 RESIDENTIAL UNITS
C	LDR 30 RESIDENTIAL UNITS	LDR 50 RESIDENTIAL UNITS
D	LDR 340 RESIDENTIAL UNITS	LDR 445 RESIDENTIAL UNITS
E	LDR 185 RESIDENTIAL UNITS	LDR 284 RESIDENTIAL UNITS
F	LDR 300 RESIDENTIAL UNITS	LDR 365 RESIDENTIAL UNITS
J	MU 47.9 ACRES	MU 47.9 ACRES
K	MU 11.9 ACRES	MU 118,000 SF 7 1/2 ACRES
L	MU 8.7 ACRES	MU 80,000 SF 7 1/2 ACRES
M	MU 17.9 ACRES	MU 170,000 SF 17.9 ACRES
N	MUR 44 UNITS	LDR 28 RESIDENTIAL UNITS
P	MUR 200 UNITS	LDR 105 RESIDENTIAL UNITS
Q	MU 7.8 ACRES	MU 78,000 SF 7.8 ACRES
THE FOLLOWING USE WILL ALSO BE PROVIDED		
CONSERVATION, PRESERVATION, OPEN SPACE		~2,840 ACRES
PUBLIC PARKS AND RECREATION		84.5 ACRES
COMMUNITY RECREATION CENTER		12.8 ACRES

