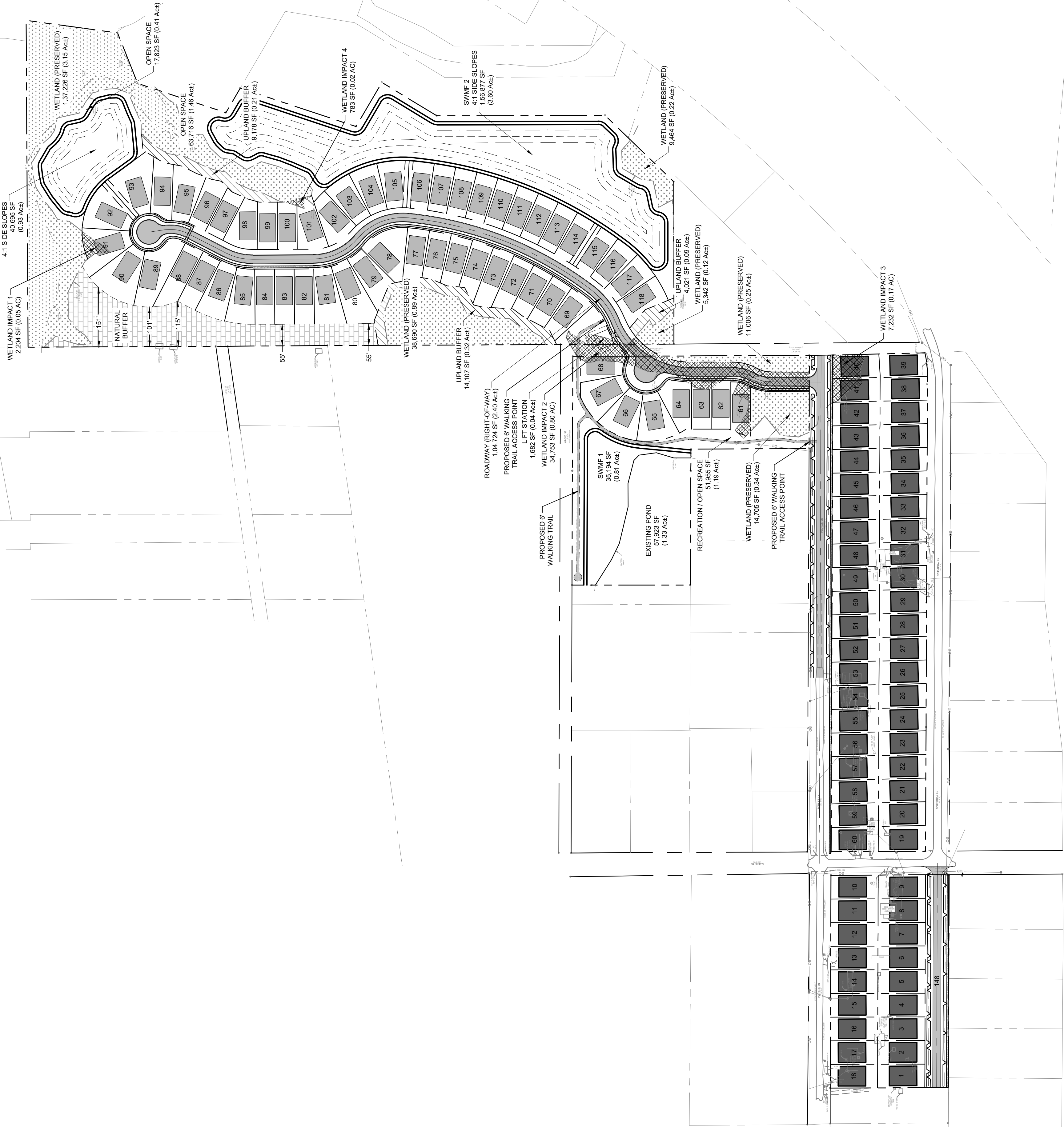
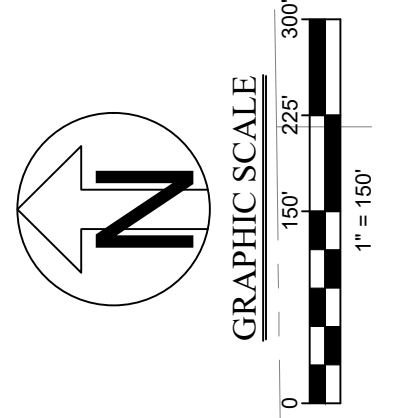


NO.	DATE	DESCRIPTION
DTS		DTS
CHK BY:		ARA
DATE:		09-23-2021
JOB NO.:		21068



HATCH LEGEND	
[Hatch pattern]	ASPHALT PAVEMENT
[Hatch pattern]	CONCRETE SIDEWALK
[Hatch pattern]	UPLAND BUFFER
[Hatch pattern]	WETLANDS
[Hatch pattern]	WETLAND IMPACTS
[Hatch pattern]	RECREATION/OPEN SPACE
[Hatch pattern]	WALKING PATH
[Hatch pattern]	NATURAL BUFFER

ROADWAY (RIGHT-OF-WAY)
 1,04,724 SF (2.40 AC)

PROPOSED 6' WALKING
 TRAIL ACCESS POINT

LIFT STATION
 4,826 SF (0.04 AC)

WETLAND BUFFER
 34,763 SF (0.80 AC)

PROPOSED 6'
 WALKING TRAIL

SWAMP 1
 35,104 SF
 (0.81 AC)

EXISTING POND
 57,229 SF
 (1.33 AC)

RECREATION/OPEN SPACE
 51,856 SF
 (1.19 AC)

WETLAND (PRESERVED)
 14,705 SF (0.34 AC)

PROPOSED 6' WALKING
 TRAIL ACCESS POINT

SWAMP 2
 4.1 SIDE SLOPES
 1,56,877 SF
 (3.60 AC)

SWAMP 3
 4.1 SIDE SLOPES
 1,033,433 SF
 (23.60 AC)

WETLAND (PRESERVED)
 2,204 SF (0.05 AC)

WETLAND (PRESERVED)
 1,37,228 SF (3.15 AC)

OPEN SPACE
 17,823 SF (0.41 AC)

OPEN SPACE
 63,716 SF (1.46 AC)

UPLAND BUFFER
 9,176 SF (0.21 AC)

WETLAND IMPACT 4
 783 SF (0.02 AC)

WETLAND (PRESERVED)
 9,464 SF (0.22 AC)

UPLAND BUFFER
 14,107 SF (0.32 AC)

WETLAND (PRESERVED)
 38,690 SF (0.89 AC)

UPLAND BUFFER
 5,342 SF (0.12 AC)

WETLAND (PRESERVED)
 11,006 SF (0.25 AC)

WETLAND IMPACT 3
 7,232 SF (0.17 AC)

September 23, 2021