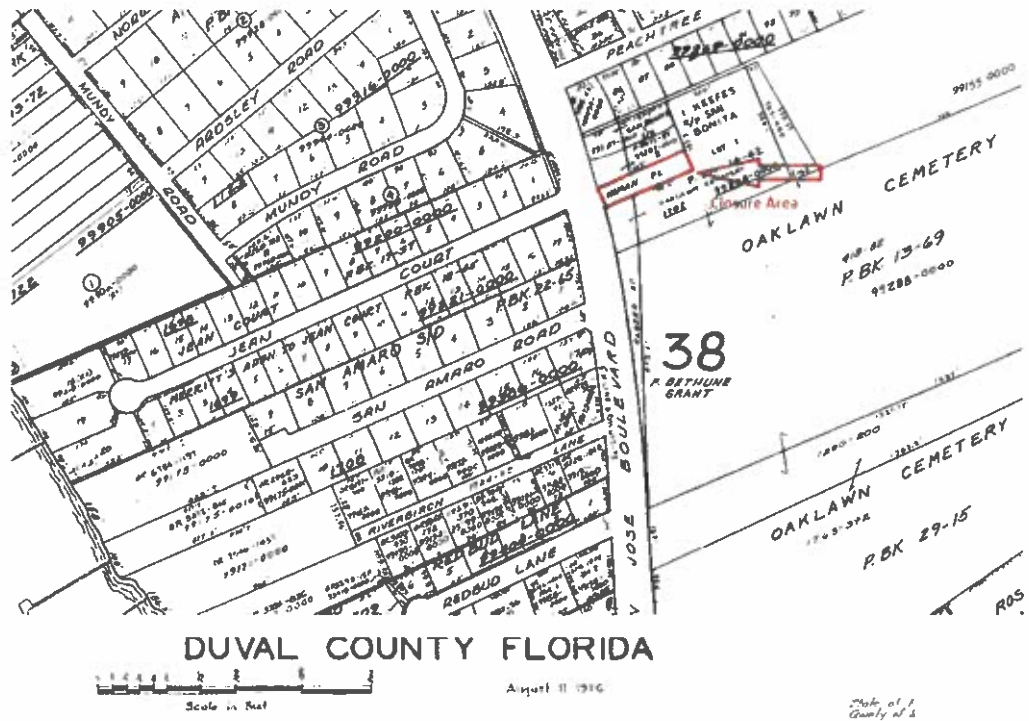
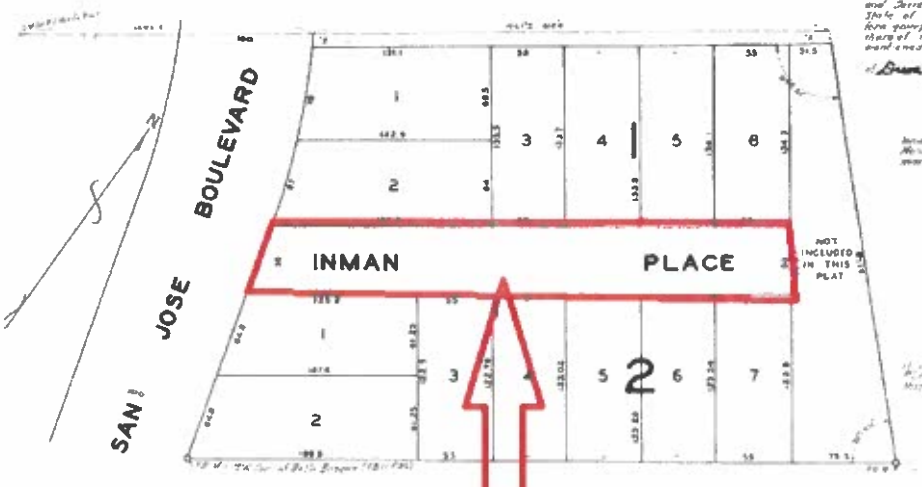


Satellite Aerial – Aerial landscape view Oaklawn Place Closure





State of Florida
County of Duval
vs. James
and Janet
State of Florida
vs. James
Charge of
murder and
[Signature]



Closure Area
Currently known as
Oaklawn Place

APPROVED
DESCRIPTION AGREES
WITH MAP
CITY ENGINEERS OFFICE
TOPO/SURVEY BRANCH
By SCC Date 11/4/21

RE# 099287-0005 for location purposes only
Inman Place Currently known as Oaklawn Place.

That portion of Inman Place, aka Oaklawn Place a 50 foot, right of way, lying between Blocks 1, and 2, as shown on the Plat of San Bonita a Subdivision as recorded in Plat Book 12, Page 67, of the Current Public Records, of Duval County, Florida.