

2021-635

EXHIBITS

C

6-853-478

T(EX)

ACRES

3 (EX)

6384-000

OR 62-283

387-363-194

C

(112)

ILW

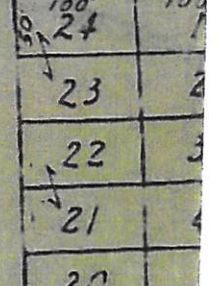
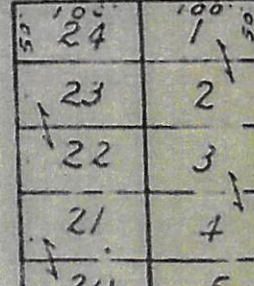
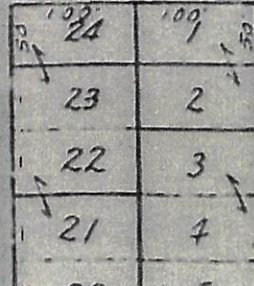
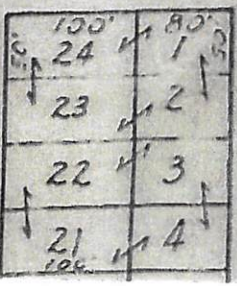
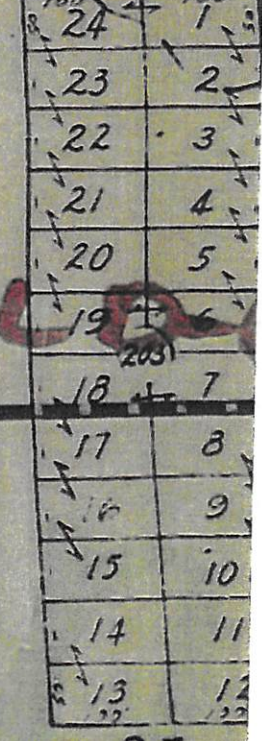
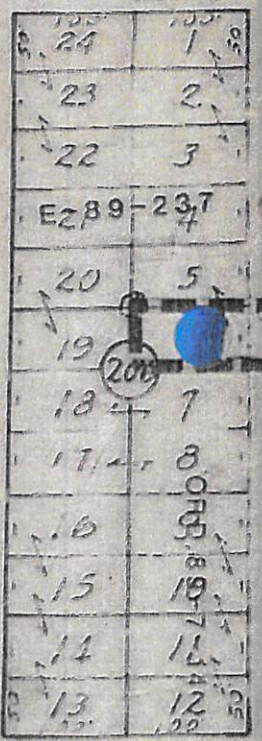
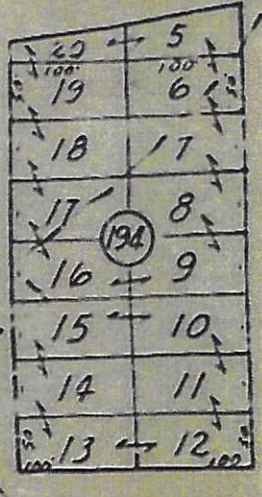
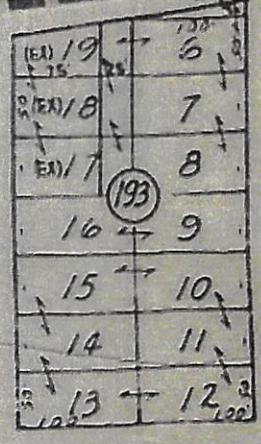
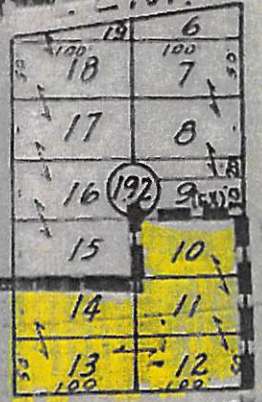
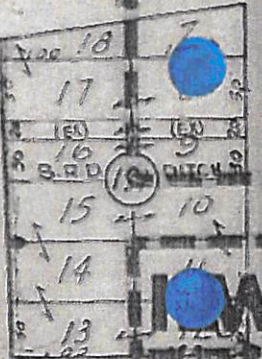
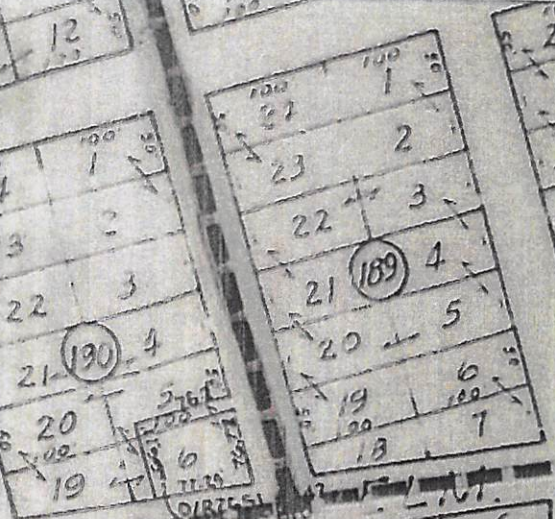
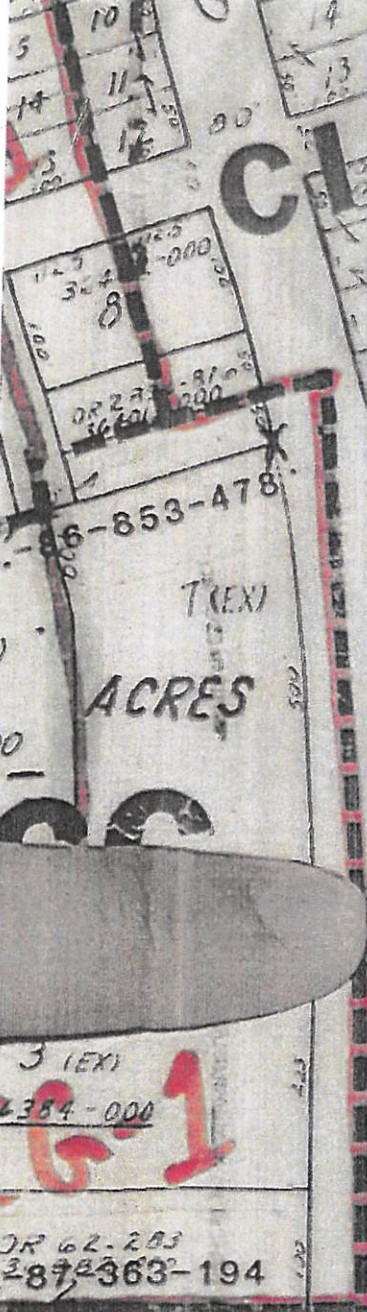
T(112)

LS

R

R

S.T.





RLD-G

CCG-2

P.B.5

ARMSTRONG ACRES
71A-468A
UNIT 1
LDR-CCG
DECEMBER

P.B. 14 P. 16
0580
CCG-1

ELM

TOURIST

CLOSED DRD
71-1247-704

CCG-2

RLD-G

RIVERVIEW
ARMSTRONG ACRES
UNIT 1

TRACT 2

ST.

ST.

ST.

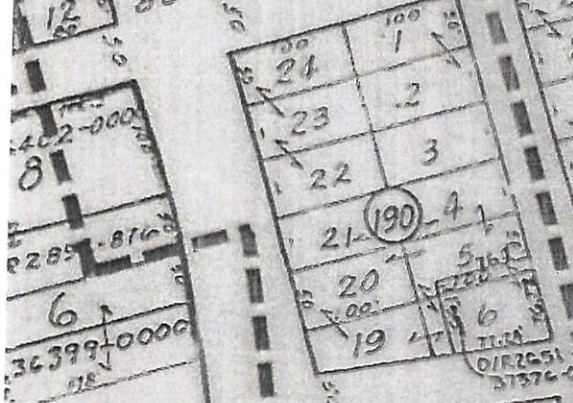
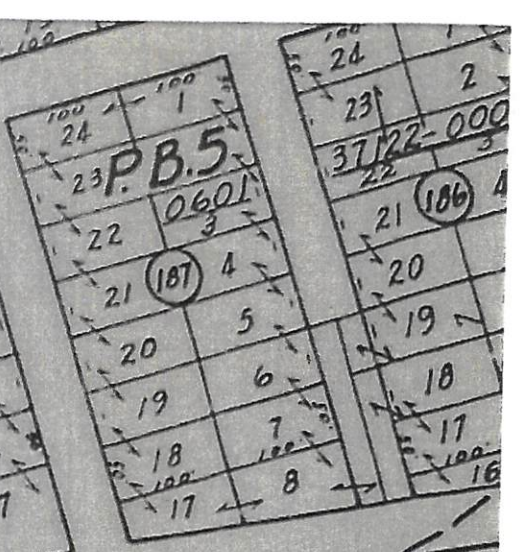
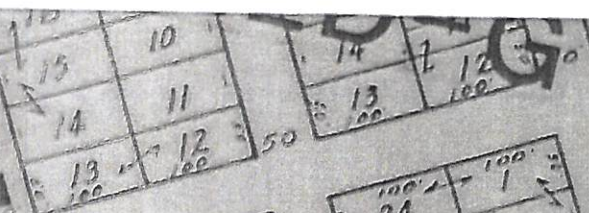
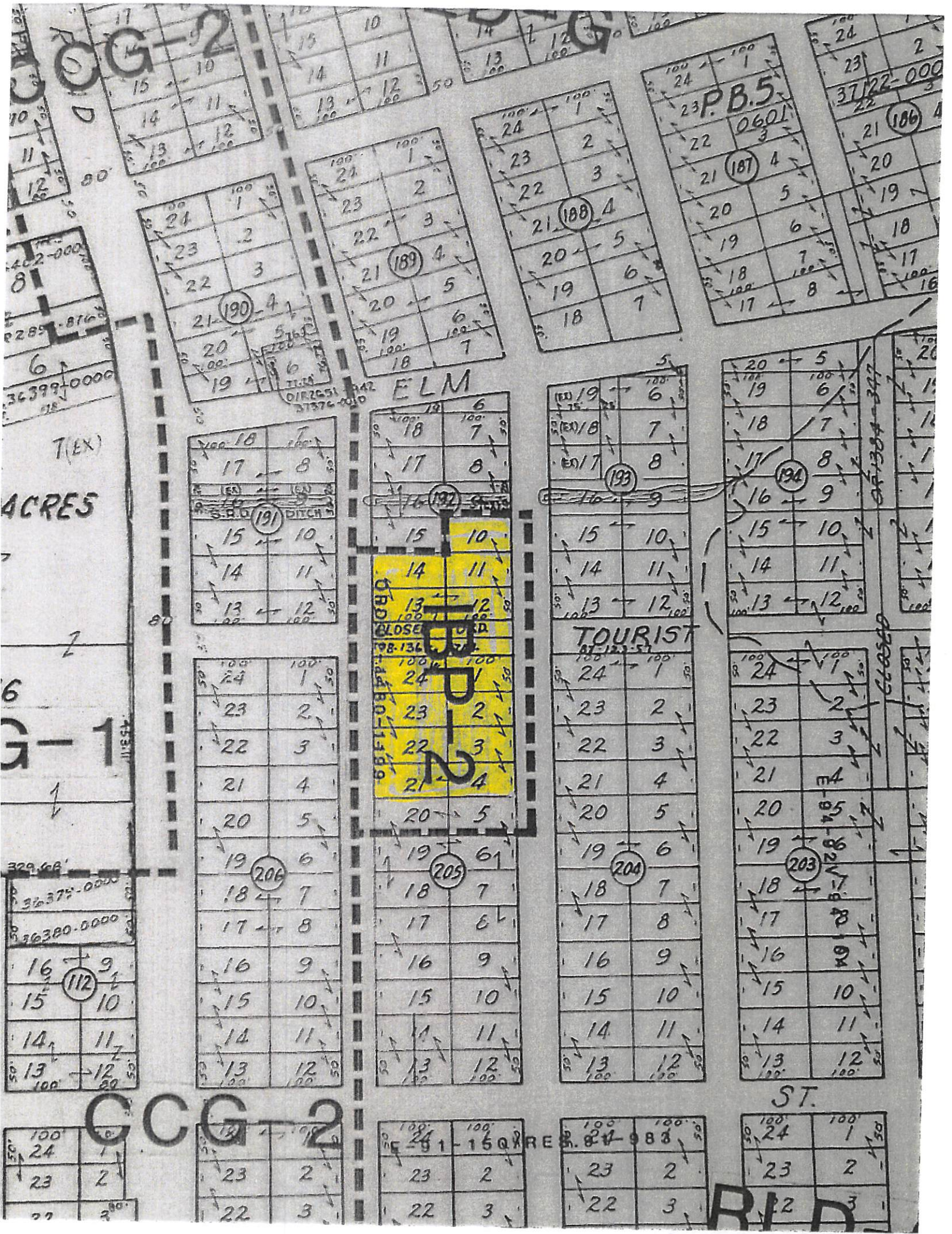
ST.

AVE

RES

(214)

RES



T(EX)
ACRES
6
G-1
7311

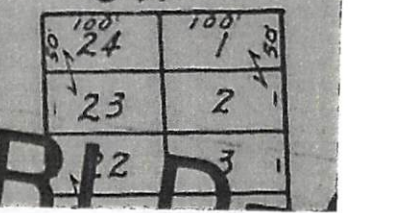
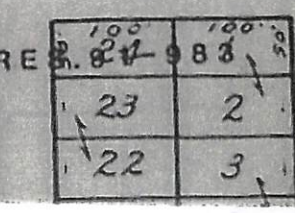
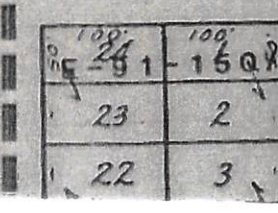
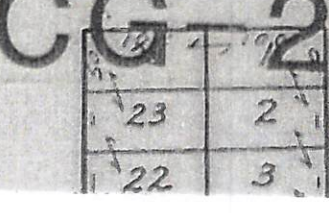
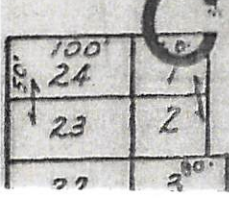
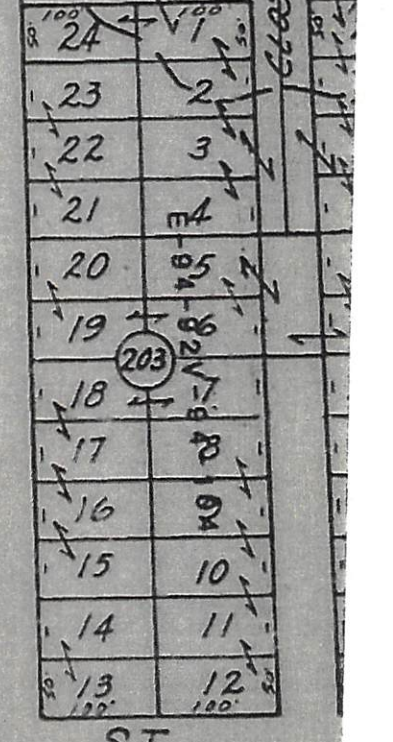
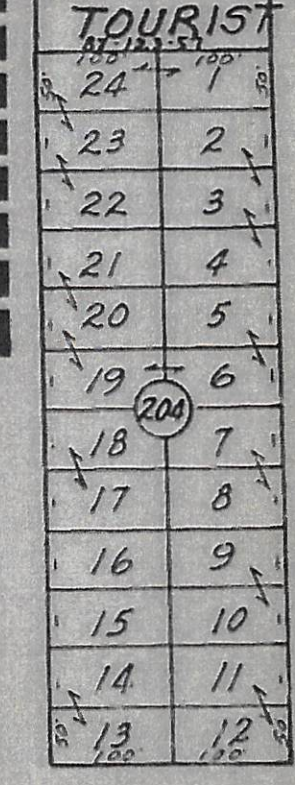
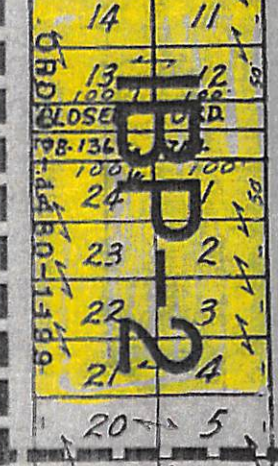
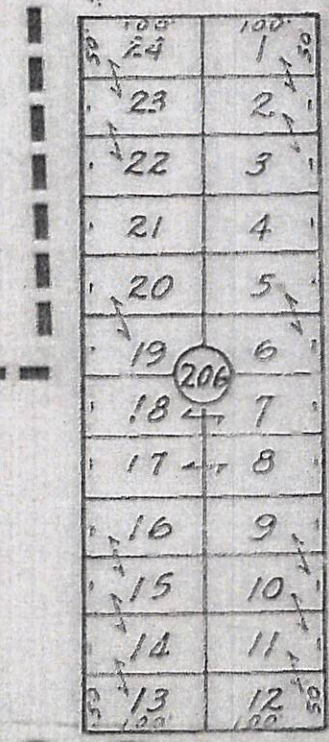
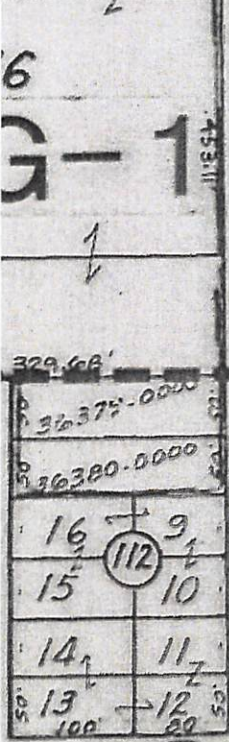
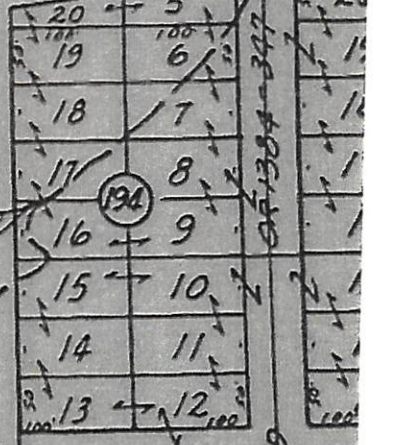
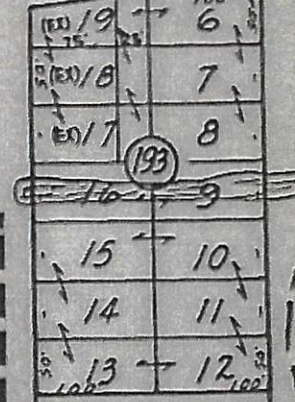
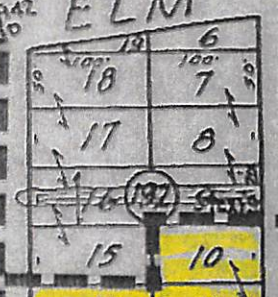
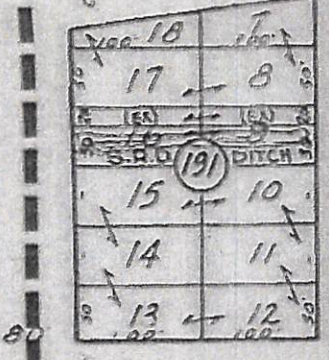
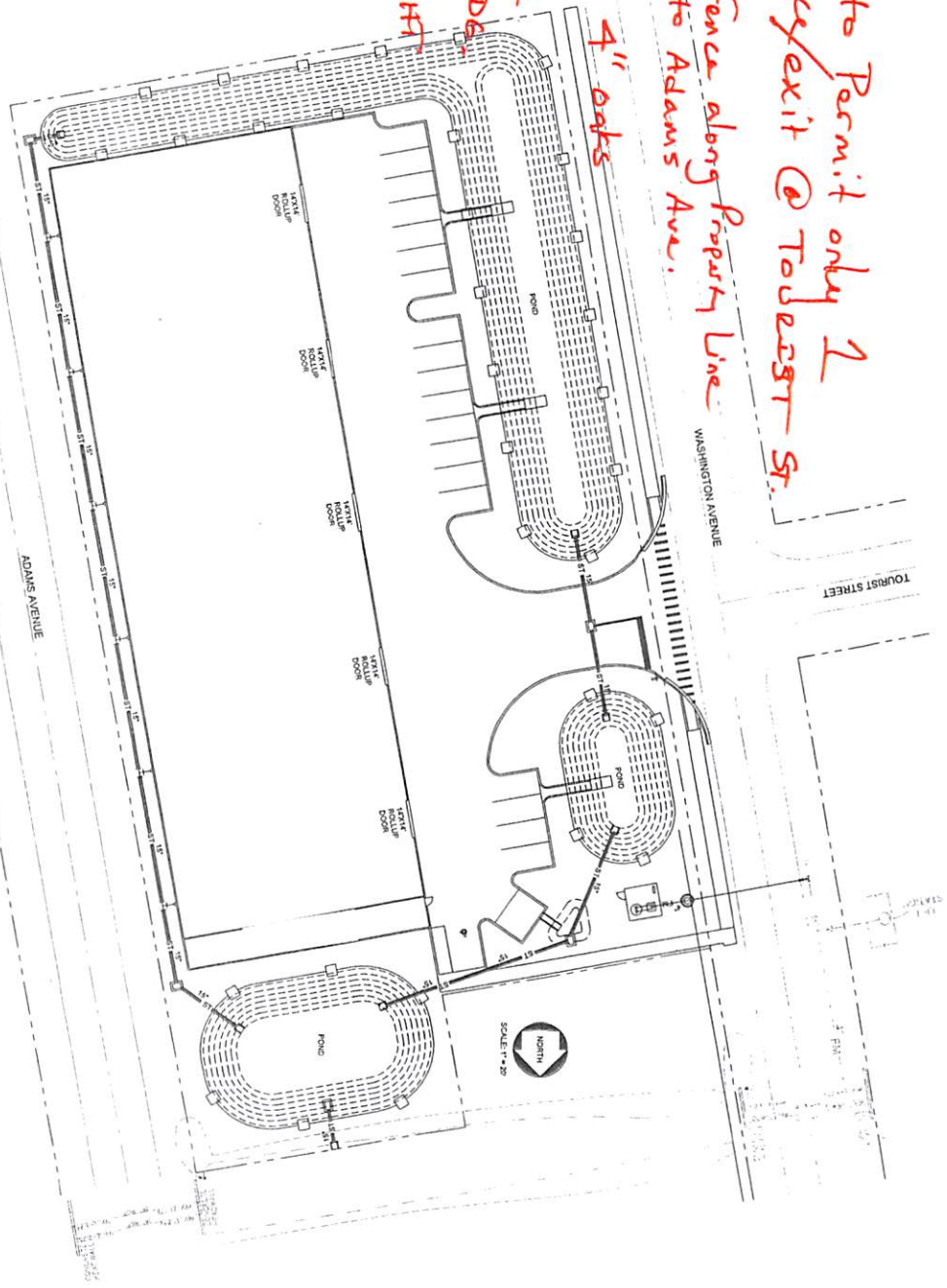


EXHIBIT 'E'

1. Revised to Permit only 2 entrance/exit @ Tolbert St.
2. 6' wood fence along Property Line adjacent to Adams Ave.
3. Install 10 4" oaks 30' o.c. along East Side of BLDE.
4. BLDE HEIGHT MAX 25'



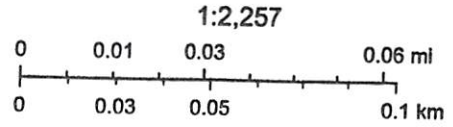
11/8/2021

C1	JAMES K. QUINA, JR., P.E. CIVIL ENGINEER FLORIDA LICENSE No.: 37778	27,000 SF - OFFICE / WAREHOUSE FACILITY FOR FIRST COAST PROPERTIES OF JAX, INC. ADAMS AVENUE, JACKSONVILLE, FLORIDA	JAMES K. QUINA, JR., P.E. CONSULTING ENGINEER P. O. BOX 600183 ST. JOHNS, FLORIDA 32260 (904) 485-5063	REVISIONS 110921 - REVISED SITE PLAN
SITE PLAN				

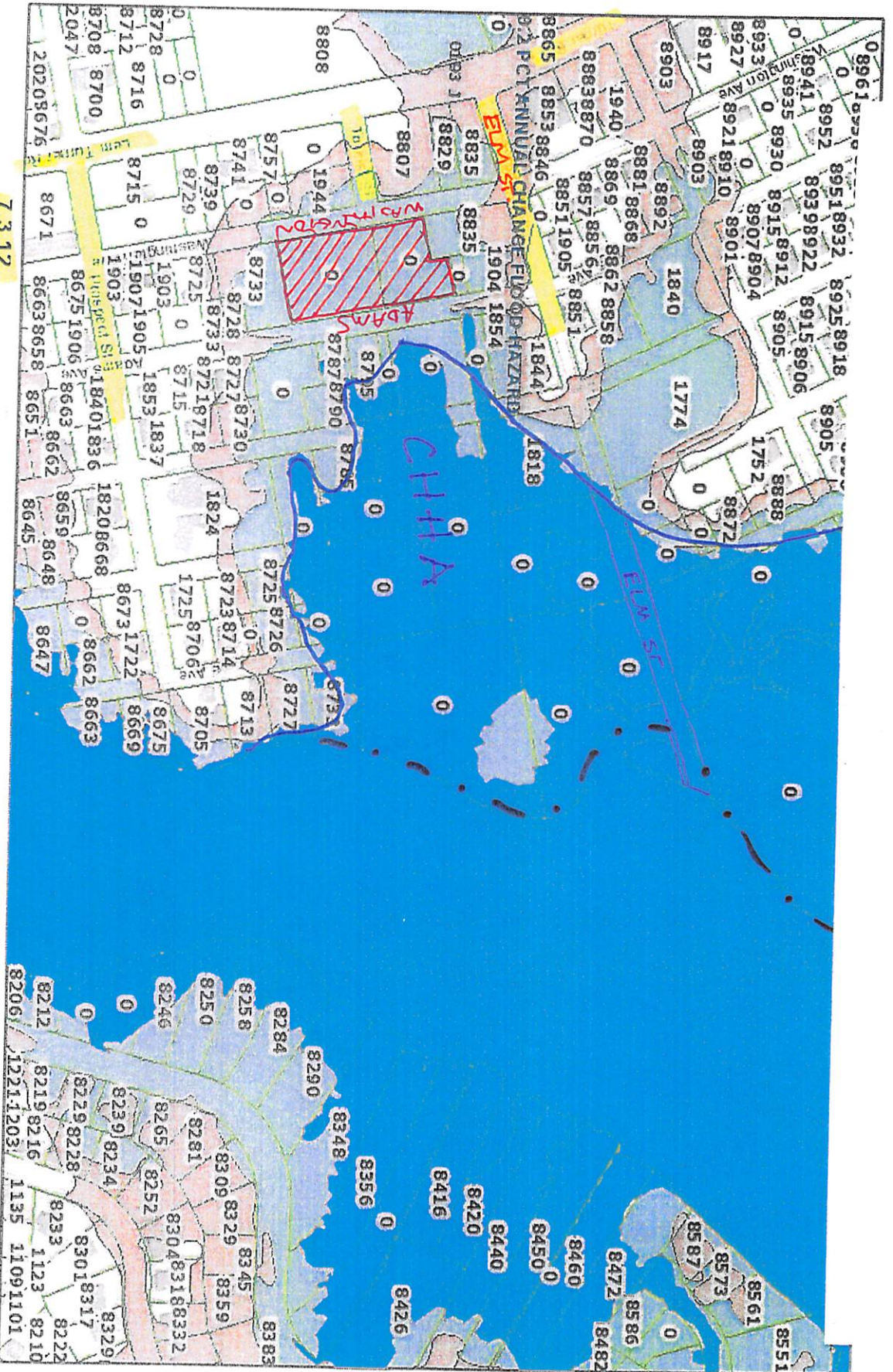
Duval Map



October 7, 2021



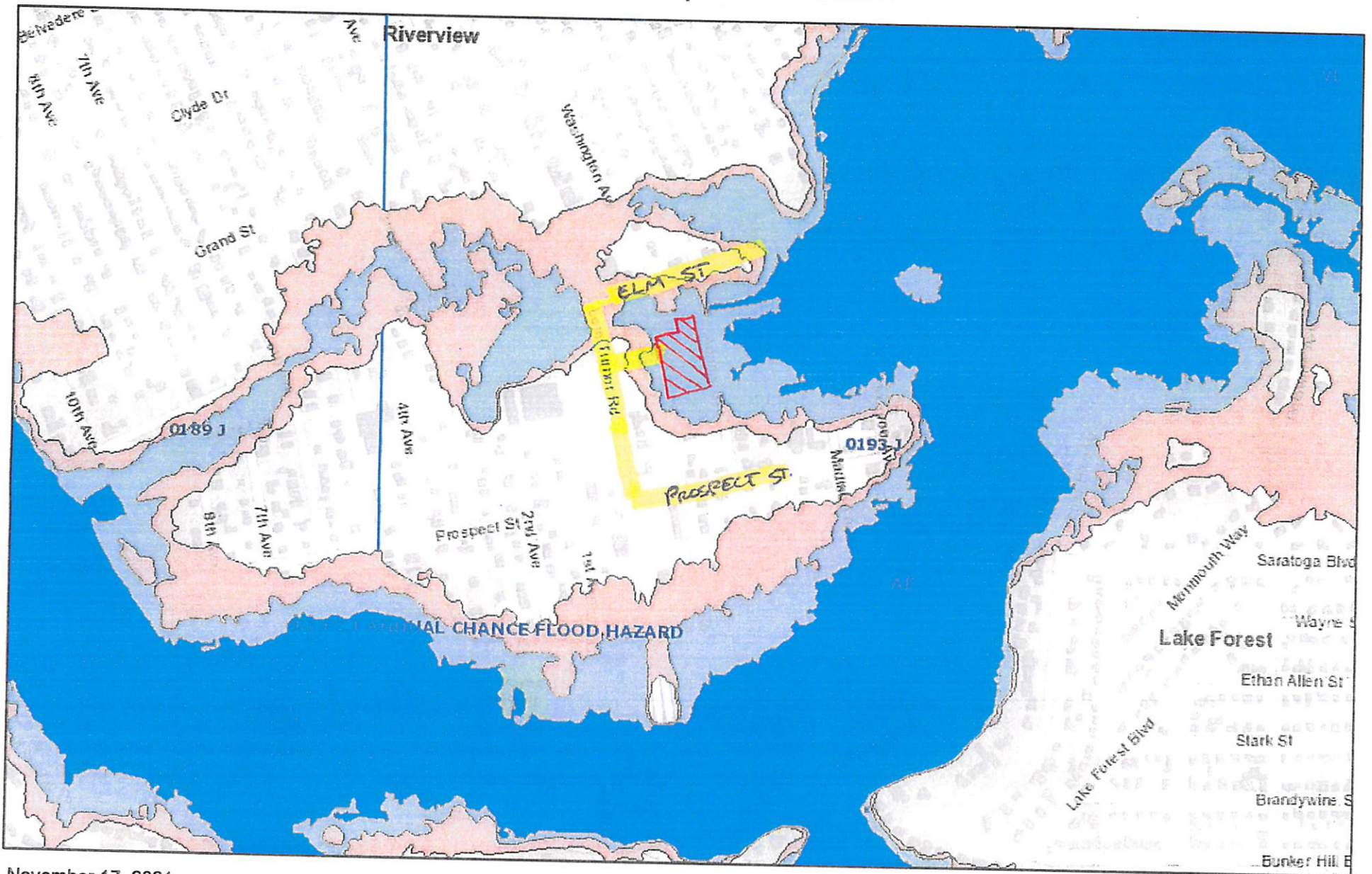
Objective 7.4 Limit development density within the Coastal High Hazard Area (CHHA) and direct it outside of the CHHA, and mitigate the impact of natural hazards in the area.



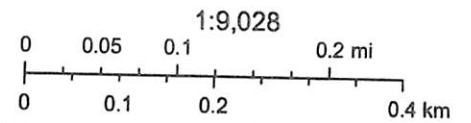
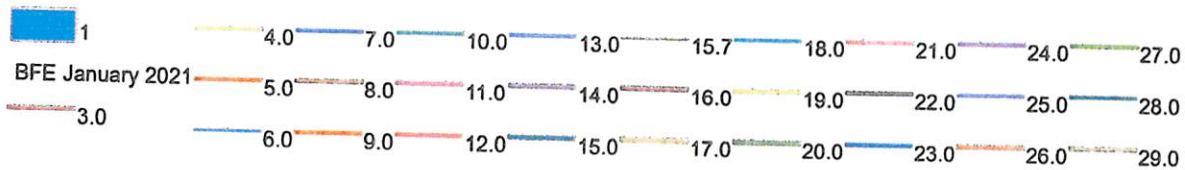
7.3.12

The City shall direct future residential density away from the Coastal High Hazard Area and shall mitigate the impacts of existing residential development rights through traditional and innovative planning tools including but not limited to Preservation Project land purchases and emergency shelter deficit reduction through mitigation assessments.

Land Development Review

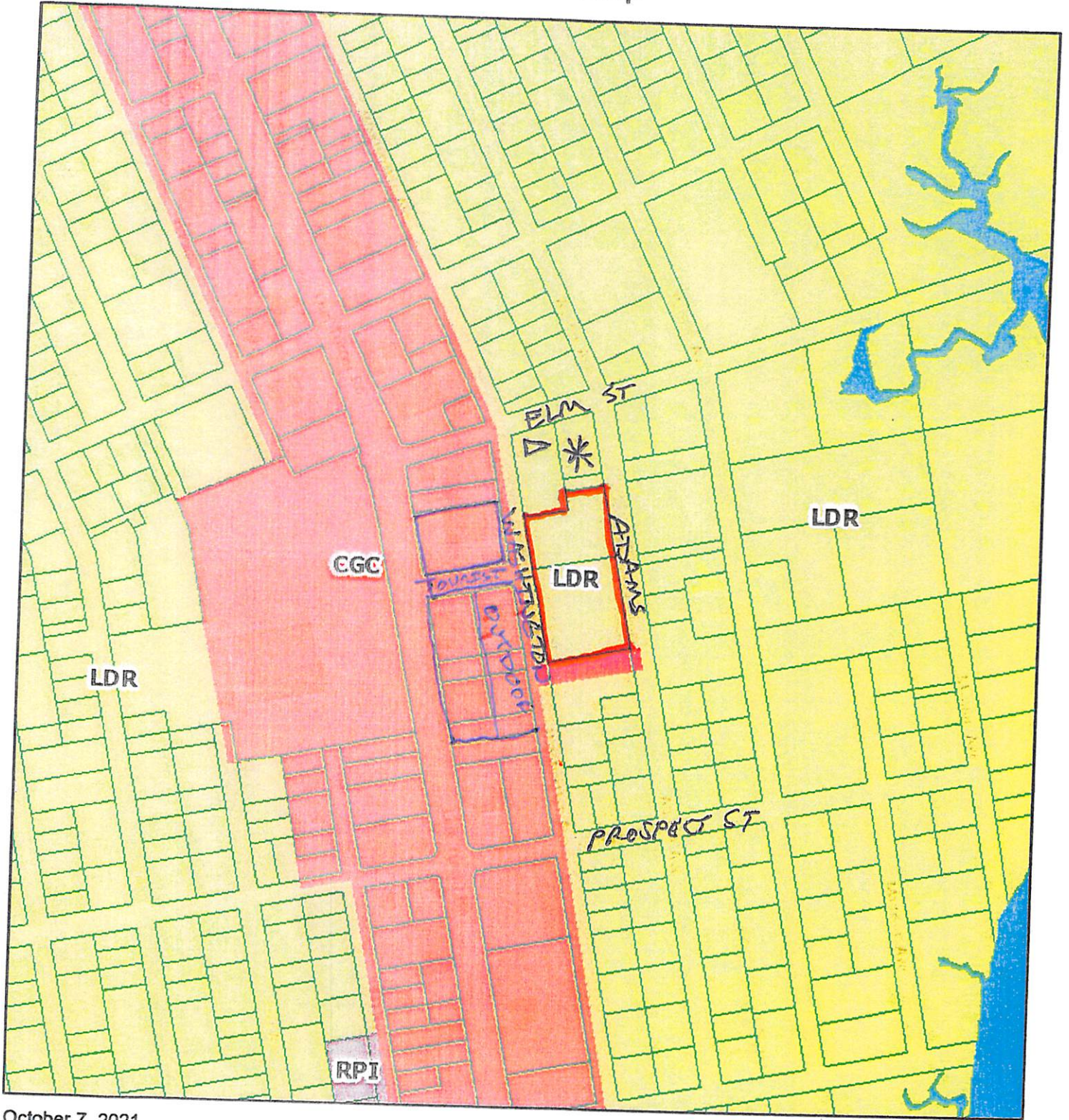


November 17, 2021

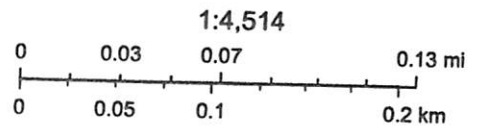


Sources: Esri, HERE, Garmin, Intermap, increment P Corp., GEBCO, USGS, FAO, NPS, NRCAN, GeoBase, IGN, Kadaster NL, Ordnance Survey, Esri

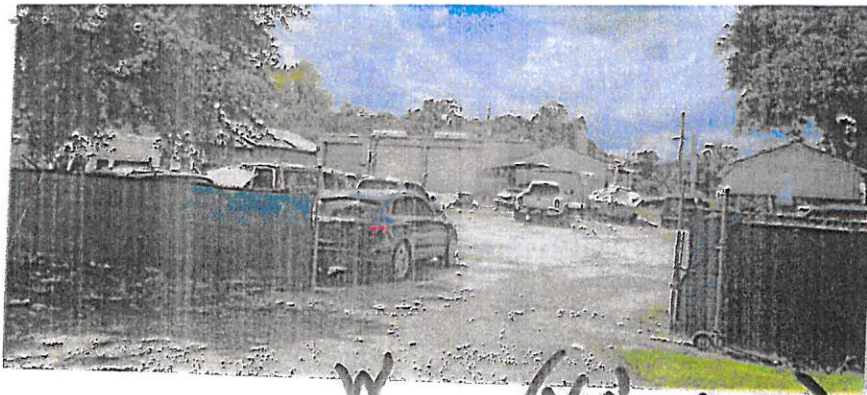
Duval Map



October 7, 2021

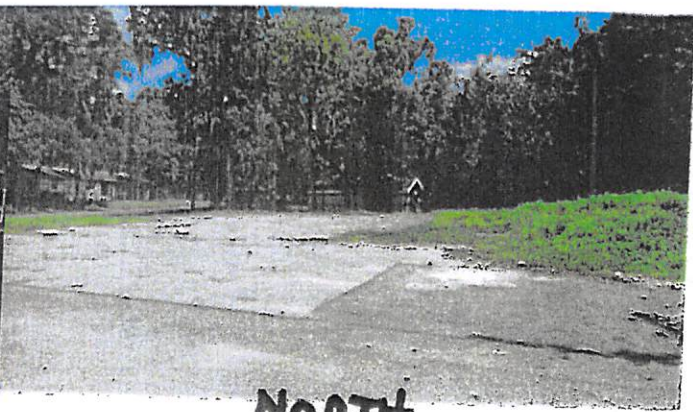


Sources: Esri, HERE, Garmin, Intermap, Increment P Corp., GEBCO, USGS, FAO, NPS, NRCAN, GeoBase, IGN, Kadaster NL, Ordnance Survey, Esri Japan, METI, Esri China (Hong Kong), (c) OpenStreetMap contributors, and the GIS User Community

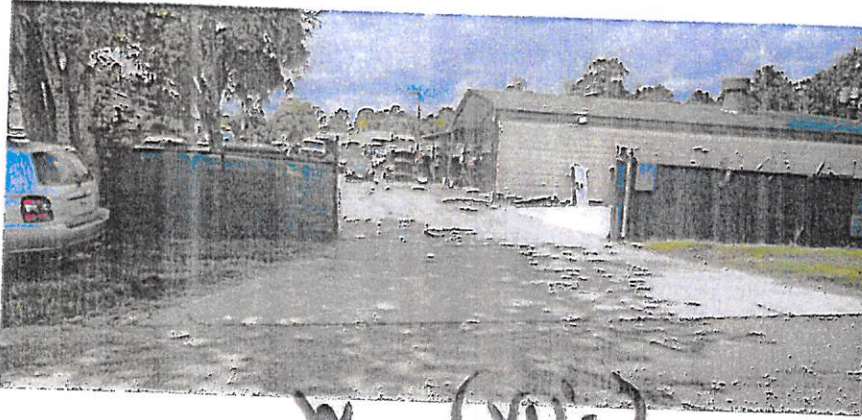


W

(VU's AUTO)



NORTH

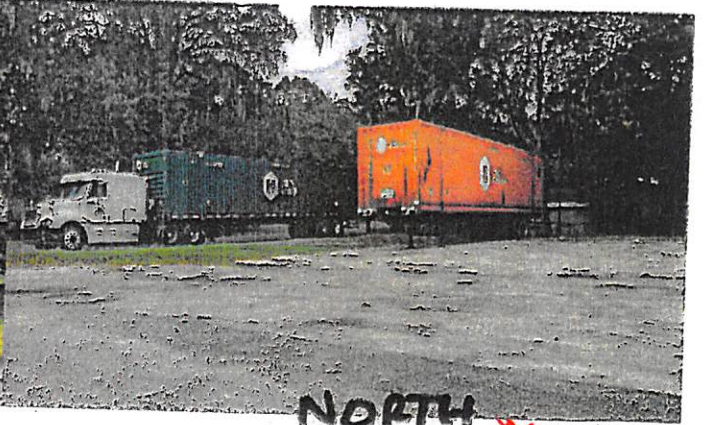


W

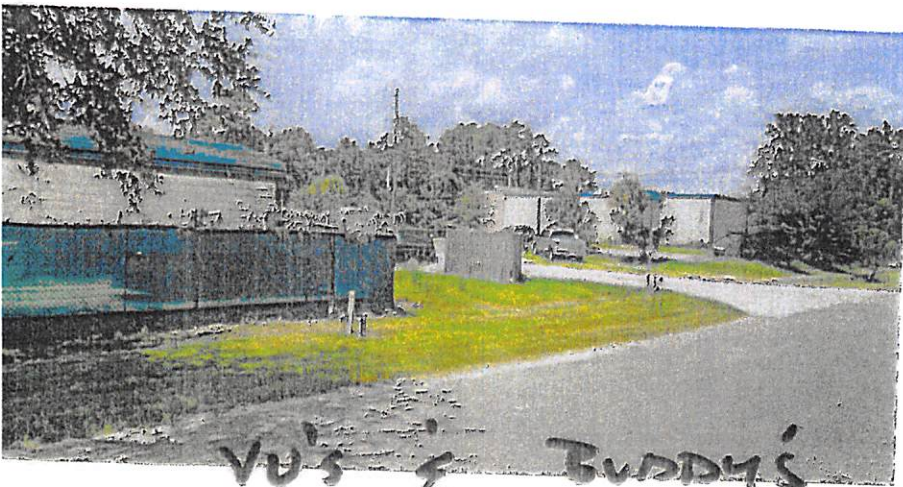
(VU's)



(VU's)



NORTH



VU'S E BUDDY'S