

SITE SUMMARY

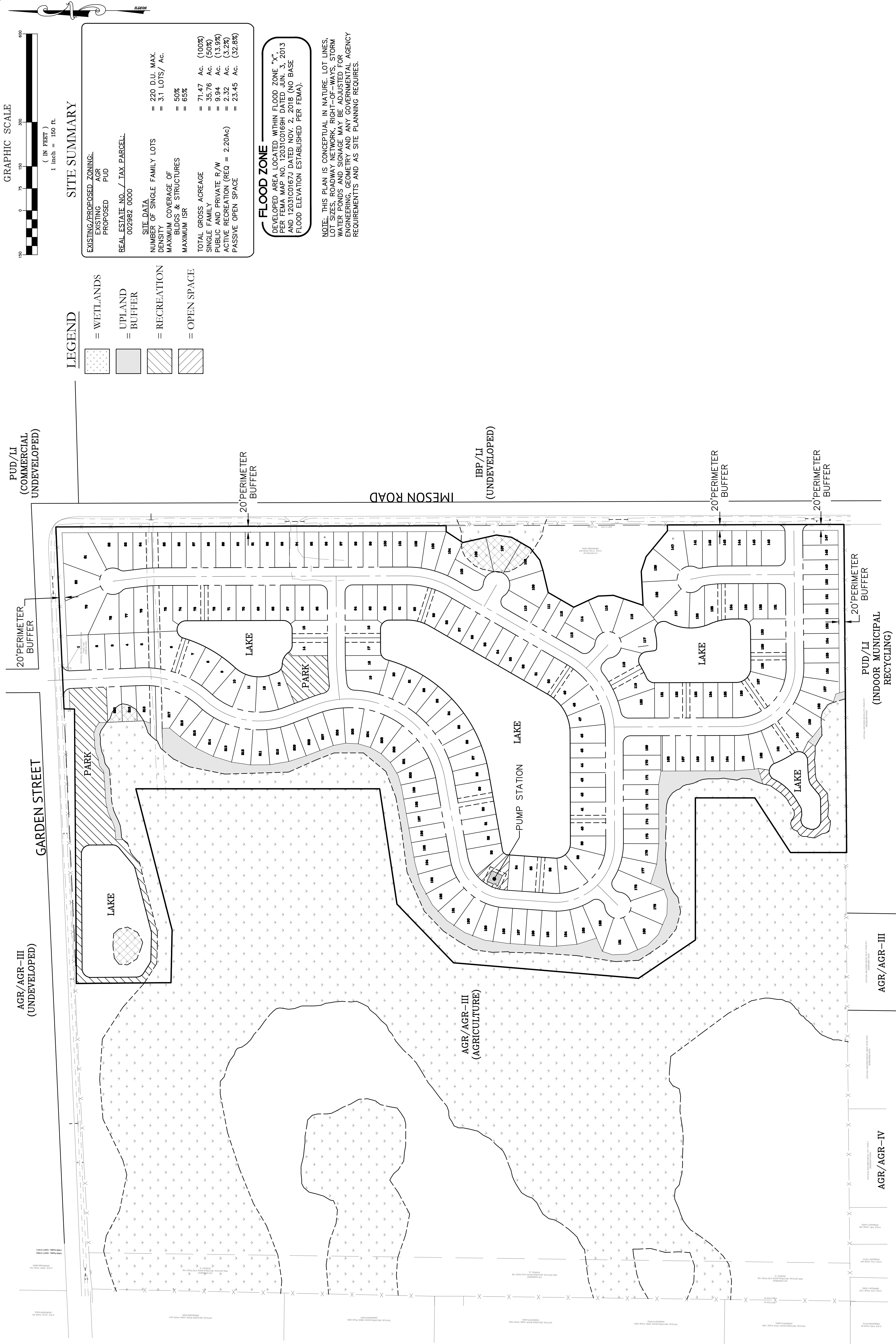
EXISTING/PROPOSED ZONING:	
EXISTING AGR	
PROPOSED PUD	
REAL ESTATE NO. / TAX PARCELL	
002982 0000	
SITE DATA	
NUMBER OF SINGLE FAMILY LOTS	= 220 D.U. MAX.
DENSITY	= 3.1 LOTS/ AC.
MAXIMUM COVERAGE OF BLDGS. & STRUCTURES	= 50%
MAXIMUM ISR	= 65%
TOTAL GROSS ACREAGE	= 71.47 Ac. (100%)
SINGLE FAMILY	= 35.76 Ac. (50%)
PUBLIC AND PRIVATE R/W	= 9.94 Ac. (13.9%)
ACTIVE RECREATION (REQ = 2.20Ac)	= 2.32 Ac. (3.2%)
PASSIVE OPEN SPACE	= 23.45 Ac. (32.8%)

FLOOD ZONE
 DEVELOPED AREA LOCATED WITHIN FLOOD ZONE "X", PER FEMA MAP NO. 12031C0169H DATED JUN. 3, 2013 AND 12031C0167J DATED NOV. 2, 2018 (NO BASE FLOOD ELEVATION ESTABLISHED PER FEMA).

NOTE: THIS PLAN IS CONCEPTUAL IN NATURE. LOT LINES, LOT SIZES, ROADWAY NETWORK, RIGHT-OF-WAYS, STORM WATER PONDS AND SIGNAGE MAY BE ADJUSTED FOR ENGINEERING, GEOMETRY AND ANY GOVERNMENTAL AGENCY REQUIREMENTS AND AS SITE PLANNING REQUIRES.

LEGEND

- = WETLANDS
- = UPLAND BUFFER
- = RECREATION
- = OPEN SPACE



Sheet No. 1 of 1
PUD-1
 DWG. NO.

VINCENT J. DUNN ENGINEER NO. 99452
 DAVID M. TAYLOR ENGINEER NO. 84164
 GLEN R. WIDIGER ENGINEER NO. 84149
 CERTIFICATE OF AUTHORIZATION NO. 57189

HAWKES MEADOW
 FOR:
KB HOME JACKSONVILLE LLC
 DUVAL COUNTY, FLORIDA
 PUD SITE PLAN

Dunn & Associates, Inc.
 CIVIL ENGINEERS / LAND PLANNERS
 8647 Boypine Road, Suite 200
 Jacksonville, Florida 32256
 Phone: (904)363-8916 Fax: (904)363-8917
 www.dunneng.com

DESIGNED BY:	DAI
DRAWN BY:	MR
CHECKED BY:	DMT
SCALE:	1" = 200'
DATE:	September 1, 2021
PROJ. NO.:	0021-60

NO.	DATE	REVISIONS DESCRIPTION	BY:

P:\POTENTIAL PROJECTS\KBH\0021-60 HAWKES MEADOW\EXHIBITS\HAWKES MEADOW PUD SITE PLAN.DWG/1/2021 11:32 AMMike Reilly