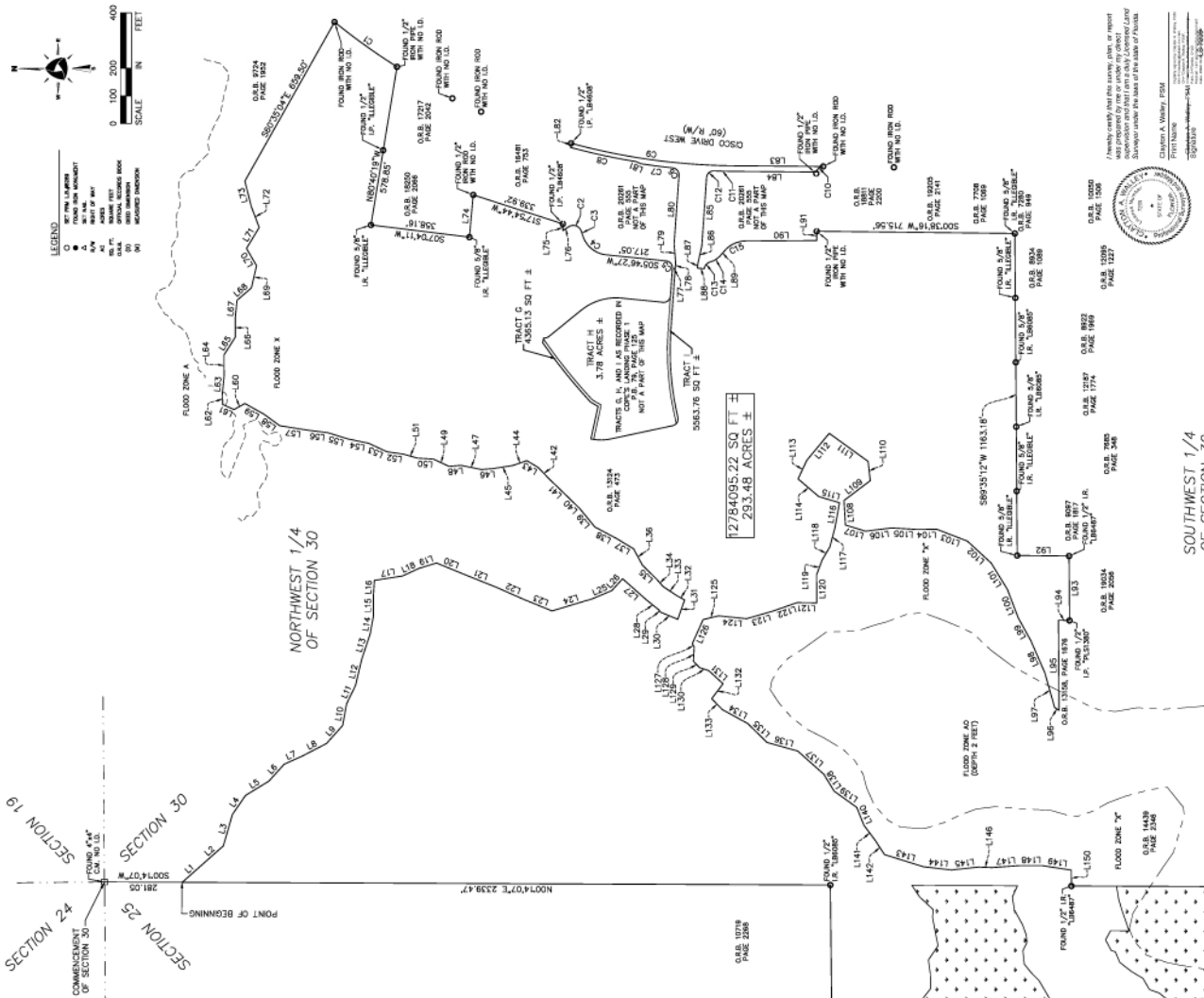




Line #	Length	Direction	Line Table
L1	100.28	S41°32'18"E	L1
L2	97.81	S41°33'52"E	L2
L3	181.29	S73°20'51"E	L3
L4	83.18	S82°08'53"E	L4
L5	99.18	S31°13'37"E	L5
L6	81.99	S47°40'59"E	L6
L7	72.03	S24°30'46"E	L7
L8	94.07	S27°15'56"E	L8
L9	87.17	S48°17'39"E	L9
L10	80.05	S79°27'39"E	L10
L11	71.03	S84°33'59"E	L11
L12	96.56	S70°39'45"E	L12
L13	85.79	S79°40'53"E	L13
L14	65.79	S79°40'53"E	L14
L15	78.39	S87°29'57"E	L15
L16	51.80	S88°19'39"E	L16
L17	103.63	S08°34'50"E	L17
L18	64.43	S24°36'52"E	L18
L19	66.37	S17°11'08"E	L19
L20	97.75	S22°22'48"W	L20
L21	135.69	S01°56'32"W	L21
L22	112.51	S02°57'01"W	L22
L23	105.97	S23°07'09"W	L23
L24	150.97	S19°50'11"E	L24
L25	78.89	S27°47'59"E	L25
L26	58.10	S47°31'31"E	L26
L27	116.69	S41°26'39"W	L27
L28	54.32	S38°09'07"W	L28
L29	12.22	S51°14'43"E	L29
L30	66.78	S22°33'71"W	L30
L31	74.31	S70°33'47"E	L31
L32	30.81	N28°33'49"E	L32
L33	60.41	N28°33'49"E	L33
L34	34.92	N49°19'42"E	L34
L35	72.57	N42°27'39"E	L35
L36	67.40	N01°36'09"E	L36
L37	70.96	N31°06'48"E	L37
L38	99.34	N28°06'21"E	L38
L39	86.81	N50°25'00"E	L39
L40	55.56	N42°34'00"E	L40
L41	94.86	N44°08'19"E	L41
L42	61.07	N49°08'54"E	L42
L43	45.94	N31°54'17"E	L43
L44	75.08	N09°03'17"W	L44
L45	40.82	N49°21'32"W	L45
L46	74.45	N11°42'28"W	L46
L47	44.01	N04°30'35"W	L47
L48	61.80	N20°07'19"E	L48
L49	57.63	N03°02'08"E	L49
L50	53.60	N10°29'03"E	L50
L51	98.63	N08°16'58"E	L51
L52	72.66	N20°07'34"E	L52
L53	75.48	N11°40'50"E	L53
L54	71.50	N07°08'08"E	L54
L55	103.21	N09°01'30"E	L55
L56	70.94	N30°12'21"E	L56



Curve #	Length	Radius	Delta	Chord	Bearing
C1	277.42	2321.83	006°50'54"	535°28'18"W	277.35
C2	53.56	30.00	107°17'04"	N17°48'47"E	46.72
C3	18.26	265.00	005°26'52"	N07°55'45"E	18.26
C4	117.16	108.00	087°07'45"	S39°20'09"W	110.58
C5	38.51	25.00	088°14'53"	N49°53'53"E	34.81
C6	38.43	25.00	088°04'55"	N49°59'02"E	34.78
C7	115.57	2341.83	002°49'40"	S97°21'34"W	115.56
C8	241.28	2336.63	002°54'57"	S12°12'37"W	241.17
C9	586.42	2321.83	014°29'54"	S07°59'09"W	585.06
C10	34.14	25.00	078°14'35"	N38°54'48"W	31.55
C11	63.85	2336.49	001°33'52"	S97°31'36"W	63.85
C12	38.52	25.00	088°17'33"	N41°49'54"W	34.82
C13	34.31	30.00	082°37'03"	N48°41'29"W	32.47
C14	43.39	77.00	032°17'27"	S32°04'09"E	42.82
C15	83.44	108.00	047°46'33"	N24°18'53"W	81.04

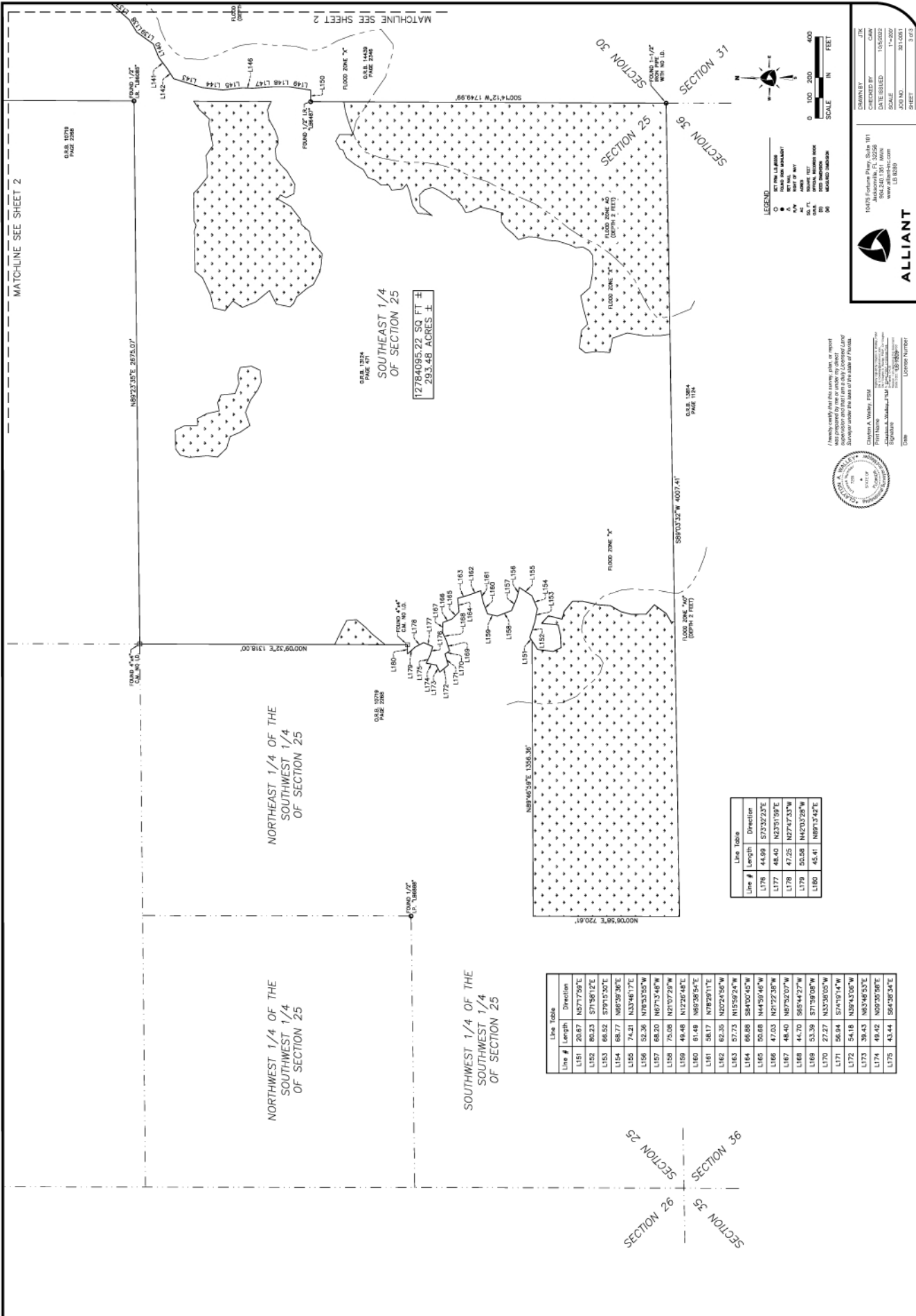
**GENERAL NOTES:**

- BOUNDARIES SHOWN HEREON ARE BASED ON THE WESTERN RIGHT OF WAY OF CROSS STREET AS BEING 50 FT ± WIDE.
- THE SURETY FUND HEREON ARE IN FEET AND IN TENTHS AND ARE BASED ON THE CORNER OF SECTION 30.
- THIS SURVEY WAS PERFORMED BY THE SURVEYOR IN THE FIELD AND THE DATA WAS CHECKED BY THE SURVEYOR IN THE OFFICE. THE SURVEYOR IS NOT RESPONSIBLE FOR THE ACCURACY OF THE DATA OR THE RESULTS THEREOF.
- NOTICE: THERE MAY BE ADDITIONAL INSTRUMENTS THAT ARE NOT SHOWN ON THIS MAP. THE SURVEYOR HAS CONDUCTED A VISUAL SEARCH OF THE RECORDS OF THE PUBLIC RECORDS OF THIS COUNTY AND HAS FOUND NO INSTRUMENTS THAT AFFECT THE BOUNDARIES SHOWN HEREON.
- THE CORNER MARKS SHOWN HEREON ARE TO BE PLACED IN ACCORDANCE WITH THE SURVEYOR'S FIELD NOTES AND THE SURVEYOR'S FIELD BOOKS. THE SURVEYOR IS NOT RESPONSIBLE FOR THE ACCURACY OF THE DATA OR THE RESULTS THEREOF.
- MEASUREMENTS SHOWN HEREON ARE BASED ON METRIC MEASUREMENTS PERFORMED BY THE SURVEYOR IN THE FIELD AND THE SURVEYOR IS NOT RESPONSIBLE FOR THE ACCURACY OF THE DATA OR THE RESULTS THEREOF.



10078 Eastern Pkwy, Suite 101  
 Jacksonville, FL 32258  
 (904) 333-1000  
 (904) 333-1001  
 (904) 333-1002  
 (904) 333-1003  
 (904) 333-1004  
 (904) 333-1005  
 (904) 333-1006  
 (904) 333-1007  
 (904) 333-1008  
 (904) 333-1009  
 (904) 333-1010  
 (904) 333-1011  
 (904) 333-1012  
 (904) 333-1013  
 (904) 333-1014  
 (904) 333-1015  
 (904) 333-1016  
 (904) 333-1017  
 (904) 333-1018  
 (904) 333-1019  
 (904) 333-1020  
 (904) 333-1021  
 (904) 333-1022  
 (904) 333-1023  
 (904) 333-1024  
 (904) 333-1025  
 (904) 333-1026  
 (904) 333-1027  
 (904) 333-1028  
 (904) 333-1029  
 (904) 333-1030

SWINGING UNDER THE EASES OF THE STATE OF FLORIDA  
 O.S. 1928 PAGE 1089  
 O.S. 1928 PAGE 1174  
 O.S. 1928 PAGE 1189  
 O.S. 1928 PAGE 1227  
 O.S. 1928 PAGE 1237  
 O.S. 1928 PAGE 1247  
 O.S. 1928 PAGE 1257  
 O.S. 1928 PAGE 1267  
 O.S. 1928 PAGE 1277  
 O.S. 1928 PAGE 1287  
 O.S. 1928 PAGE 1297  
 O.S. 1928 PAGE 1307  
 O.S. 1928 PAGE 1317  
 O.S. 1928 PAGE 1327  
 O.S. 1928 PAGE 1337  
 O.S. 1928 PAGE 1347  
 O.S. 1928 PAGE 1357  
 O.S. 1928 PAGE 1367  
 O.S. 1928 PAGE 1377  
 O.S. 1928 PAGE 1387  
 O.S. 1928 PAGE 1397  
 O.S. 1928 PAGE 1407  
 O.S. 1928 PAGE 1417  
 O.S. 1928 PAGE 1427  
 O.S. 1928 PAGE 1437  
 O.S. 1928 PAGE 1447  
 O.S. 1928 PAGE 1457  
 O.S. 1928 PAGE 1467  
 O.S. 1928 PAGE 1477  
 O.S. 1928 PAGE 1487  
 O.S. 1928 PAGE 1497  
 O.S. 1928 PAGE 1507  
 O.S. 1928 PAGE 1517  
 O.S. 1928 PAGE 1527  
 O.S. 1928 PAGE 1537  
 O.S. 1928 PAGE 1547  
 O.S. 1928 PAGE 1557  
 O.S. 1928 PAGE 1567  
 O.S. 1928 PAGE 1577  
 O.S. 1928 PAGE 1587  
 O.S. 1928 PAGE 1597  
 O.S. 1928 PAGE 1607  
 O.S. 1928 PAGE 1617  
 O.S. 1928 PAGE 1627  
 O.S. 1928 PAGE 1637  
 O.S. 1928 PAGE 1647  
 O.S. 1928 PAGE 1657  
 O.S. 1928 PAGE 1667  
 O.S. 1928 PAGE 1677  
 O.S. 1928 PAGE 1687  
 O.S. 1928 PAGE 1697  
 O.S. 1928 PAGE 1707  
 O.S. 1928 PAGE 1717  
 O.S. 1928 PAGE 1727  
 O.S. 1928 PAGE 1737  
 O.S. 1928 PAGE 1747  
 O.S. 1928 PAGE 1757  
 O.S. 1928 PAGE 1767  
 O.S. 1928 PAGE 1777  
 O.S. 1928 PAGE 1787  
 O.S. 1928 PAGE 1797  
 O.S. 1928 PAGE 1807  
 O.S. 1928 PAGE 1817  
 O.S. 1928 PAGE 1827  
 O.S. 1928 PAGE 1837  
 O.S. 1928 PAGE 1847  
 O.S. 1928 PAGE 1857  
 O.S. 1928 PAGE 1867  
 O.S. 1928 PAGE 1877  
 O.S. 1928 PAGE 1887  
 O.S. 1928 PAGE 1897  
 O.S. 1928 PAGE 1907  
 O.S. 1928 PAGE 1917  
 O.S. 1928 PAGE 1927  
 O.S. 1928 PAGE 1937  
 O.S. 1928 PAGE 1947  
 O.S. 1928 PAGE 1957  
 O.S. 1928 PAGE 1967  
 O.S. 1928 PAGE 1977  
 O.S. 1928 PAGE 1987  
 O.S. 1928 PAGE 1997  
 O.S. 1928 PAGE 2007  
 O.S. 1928 PAGE 2017  
 O.S. 1928 PAGE 2027  
 O.S. 1928 PAGE 2037  
 O.S. 1928 PAGE 2047  
 O.S. 1928 PAGE 2057  
 O.S. 1928 PAGE 2067  
 O.S. 1928 PAGE 2077  
 O.S. 1928 PAGE 2087  
 O.S. 1928 PAGE 2097  
 O.S. 1928 PAGE 2107  
 O.S. 1928 PAGE 2117  
 O.S. 1928 PAGE 2127  
 O.S. 1928 PAGE 2137  
 O.S. 1928 PAGE 2147  
 O.S. 1928 PAGE 2157  
 O.S. 1928 PAGE 2167  
 O.S. 1928 PAGE 2177  
 O.S. 1928 PAGE 2187  
 O.S. 1928 PAGE 2197  
 O.S. 1928 PAGE 2207  
 O.S. 1928 PAGE 2217  
 O.S. 1928 PAGE 2227  
 O.S. 1928 PAGE 2237  
 O.S. 1928 PAGE 2247  
 O.S. 1928 PAGE 2257  
 O.S. 1928 PAGE 2267  
 O.S. 1928 PAGE 2277  
 O.S. 1928 PAGE 2287  
 O.S. 1928 PAGE 2297  
 O.S. 1928 PAGE 2307  
 O.S. 1928 PAGE 2317  
 O.S. 1928 PAGE 2327  
 O.S. 1928 PAGE 2337  
 O.S. 1928 PAGE 2347  
 O.S. 1928 PAGE 2357  
 O.S. 1928 PAGE 2367  
 O.S. 1928 PAGE 2377  
 O.S. 1928 PAGE 2387  
 O.S. 1928 PAGE 2397  
 O.S. 1928 PAGE 2407  
 O.S. 1928 PAGE 2417  
 O.S. 1928 PAGE 2427  
 O.S. 1928 PAGE 2437  
 O.S. 1928 PAGE 2447  
 O.S. 1928 PAGE 2457  
 O.S. 1928 PAGE 2467  
 O.S. 1928 PAGE 2477  
 O.S. 1928 PAGE 2487  
 O.S. 1928 PAGE 2497  
 O.S. 1928 PAGE 2507



MATCHLINE SEE SHEET 2

O.A.S. 10718  
PAGE 2288

N89°23.33'E 2676.07'

N89°09.32'E 1318.00'

N89°06.58'E 720.61'

N89°06.58'E 720.61'

N89°06.58'E 720.61'

O.A.S. 10718  
PAGE 2288

O.A.S. 10718  
PAGE 2288

O.A.S. 10718  
PAGE 2288

O.A.S. 10718  
PAGE 2288

O.A.S. 10718  
PAGE 2288

NORTHWEST 1/4 OF THE  
SOUTHWEST 1/4  
OF SECTION 25

NORTHWEST 1/4 OF THE  
SOUTHWEST 1/4  
OF SECTION 25

NORTHWEST 1/4 OF THE  
SOUTHWEST 1/4  
OF SECTION 25

O.A.S. 10718  
PAGE 2288

O.A.S. 10718  
PAGE 2288

O.A.S. 10718  
PAGE 2288

O.A.S. 10718  
PAGE 2288

O.A.S. 10718  
PAGE 2288

O.A.S. 10718  
PAGE 2288

O.A.S. 10718  
PAGE 2288

O.A.S. 10718  
PAGE 2288

O.A.S. 10718  
PAGE 2288

O.A.S. 10718  
PAGE 2288

SOUTHWEST 1/4 OF THE  
SOUTHWEST 1/4  
OF SECTION 25

SOUTHWEST 1/4 OF THE  
SOUTHWEST 1/4  
OF SECTION 25

Line #	Length	Direction
L151	20.87	N37°17.58'E
L152	80.23	S71°50.12'E
L153	86.52	S79°15.30'E
L154	88.77	N86°38.30'E
L155	74.21	N33°46.17'E
L156	52.36	N78°33.55'W
L157	68.20	N67°15.48'W
L158	75.08	N71°07.28'W
L159	49.48	N12°26.48'E
L160	81.48	N86°38.54'E
L161	86.17	N78°29.11'E
L162	62.35	N20°24.56'W
L163	87.23	N15°52.24'W
L164	66.88	S81°02.42'W
L165	50.68	N44°39.46'W
L166	47.03	N71°22.38'W
L167	48.40	N87°32.07'W
L168	44.70	S85°44.27'W
L169	53.39	S71°30.08'W
L170	27.27	N53°30.05'W
L171	56.84	S74°19.14'W
L172	54.18	N39°42.06'W
L173	39.43	N63°49.53'E
L174	49.42	N69°32.56'E
L175	43.44	S84°38.34'E

Line #	Length	Direction
L176	44.99	S73°32.23'E
L177	48.40	N23°31.59'E
L178	47.25	N27°47.33'W
L179	50.58	N42°03.28'W
L180	45.41	N89°15.42'E

I hereby certify that this survey, plan, or report was prepared by me or under my direct supervision and that I am a duly Licensed Land Surveyor under the laws of the State of Florida.

Charles S. Hickey, P.E.  
Professional Seal  
License Number: 13084

DRAWN BY: JTK  
CHECKED BY: CAM  
DATE REBID: 10/05/22  
SCALE: AS SHOWN  
SHEET: 30 OF 30



10478 Eastern Pkwy, Suite 101  
Jacksonville, FL 32258  
904.241.1344  
www.alliant-surveying.com  
FL 8289