

**LAYOUT PLAN KEYNOTES**

CODE	DESCRIPTION	DETAIL
(1)	ASPHALT PAVEMENT LIGHT DUTY	CAO - 1
(2)	ASPHALT PAVEMENT HEAVY DUTY	CAO - 1
(3)	CONCRETE PAVEMENT	CAO - 1
(4)	POST CURS	CAO - 2
(5)	CONCRETE SIDEWALK	CAO - 3
(6)	CONCRETE WHEEL STOP	CAO - 4
(7)	ACCESSIBLE PARKING SIGN	CAO - 5

- PROPOSED LAYOUT LEGEND**
- PROPOSED BUILDING
  - HEAVY DUTY ASPHALT PAVEMENT
  - LIGHT DUTY ASPHALT PAVEMENT
  - CONCRETE PAVEMENT
  - CONCRETE SIDEWALK
  - PROPERTY LINE
  - BOUND OF NEW ADJACENT

NOTES:  
1. REFER TO SHEET CAO-09 FOR NOTES.



Behavioral Health & Inpatient Rehabilitation  
**JEFFERSON REGIONAL SPECIALTY HOSPITAL**  
 April 14, 2022  
 JACKSONVILLE, FLORIDA

**ES&J**  
 Earl Swenson Associates, Inc.  
 1033 Devonshire Street  
 Jacksonville, Florida 32202  
 904-249-2940

This project has been prepared by the undersigned professional engineer and registered professional architect under the supervision and direct control of the undersigned professional engineer and registered professional architect.

© Earl Swenson Associates, Inc. 2022

**Exhibit 4**  
**Page 1 of 3**

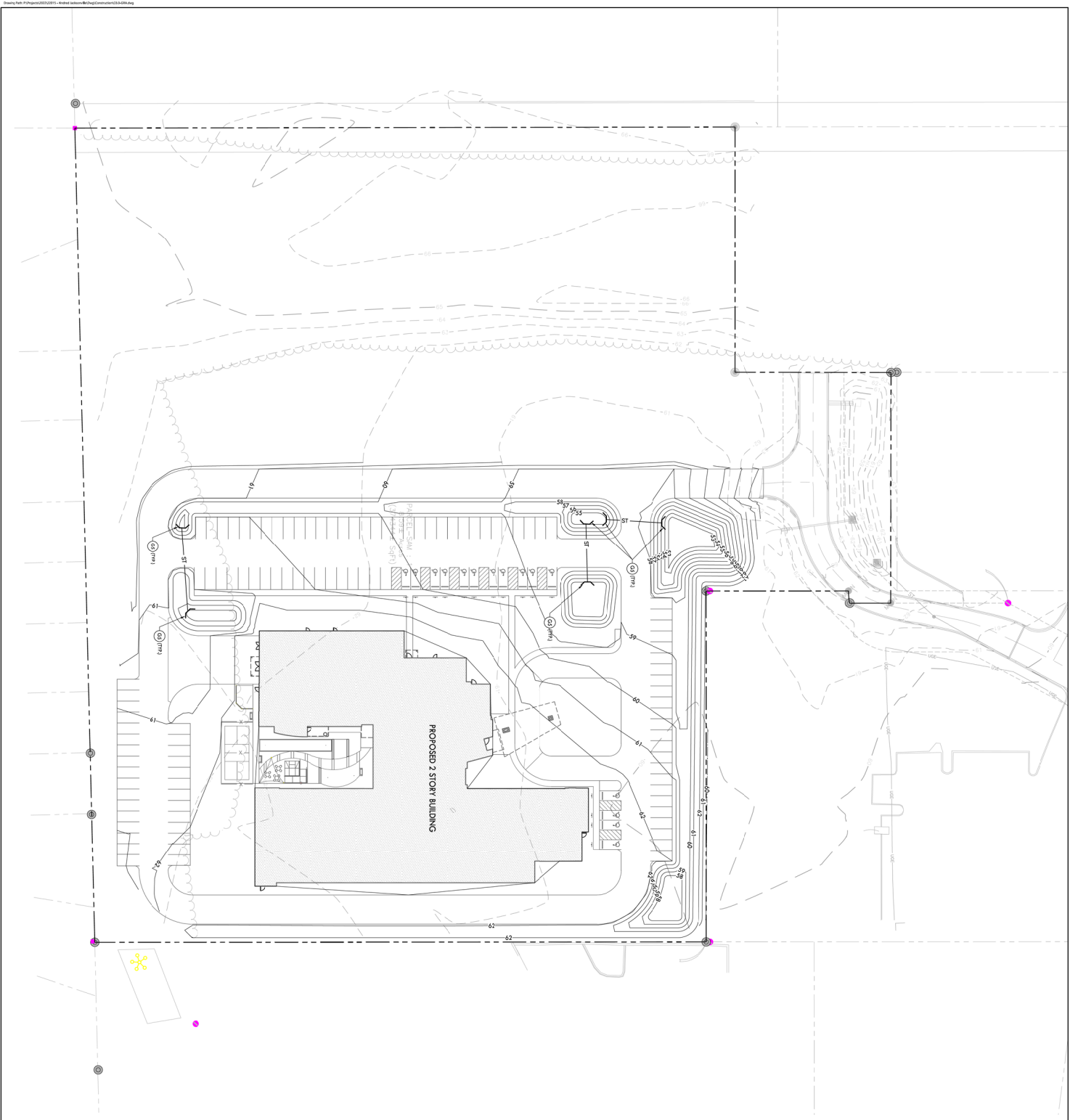
**DOCUMENT CHANGES**

NO.	DATE	DESCRIPTION

**DATE:** 04/14/2022  
**PROJECT:** Behavioral Health & Inpatient Rehabilitation  
**LOCATION:** Jacksonville, Florida  
**OWNER:** Jefferson Regional Specialty Hospital  
**DESIGNER:** Earl Swenson Associates, Inc.  
**SCALE:** 1" = 1'-0"

**SITE LAYOUT PLAN**

**Sheet Number**  
**C5.0**



**GRADING & DRAINAGE PLAN**

**KEYNOTES**

CODE	DESCRIPTION	DETAIL LOCATION
⊙	SINGLE CURB MANHOLE	-
⊙	SINGLE CATCH BASIN	-
⊙	JUNCTION BOX	-
⊙	CLEANOUT	-
⊙	CONCRETE FOOTING WALL	-
⊙	POND OUTLET STRUCTURE	-

**PROPOSED GRADING & DRAINAGE LEGEND**

--- 5' PROPOSED CONTROL

+3.110 PROPOSED SPOT ELEVATION

⊙ STORM STRUCTURE LABEL

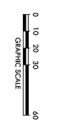
ST STORM PIPE

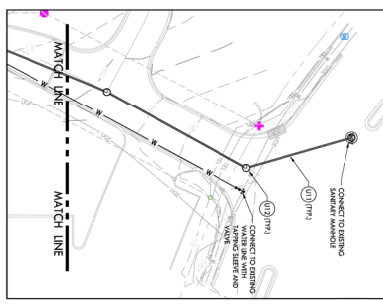
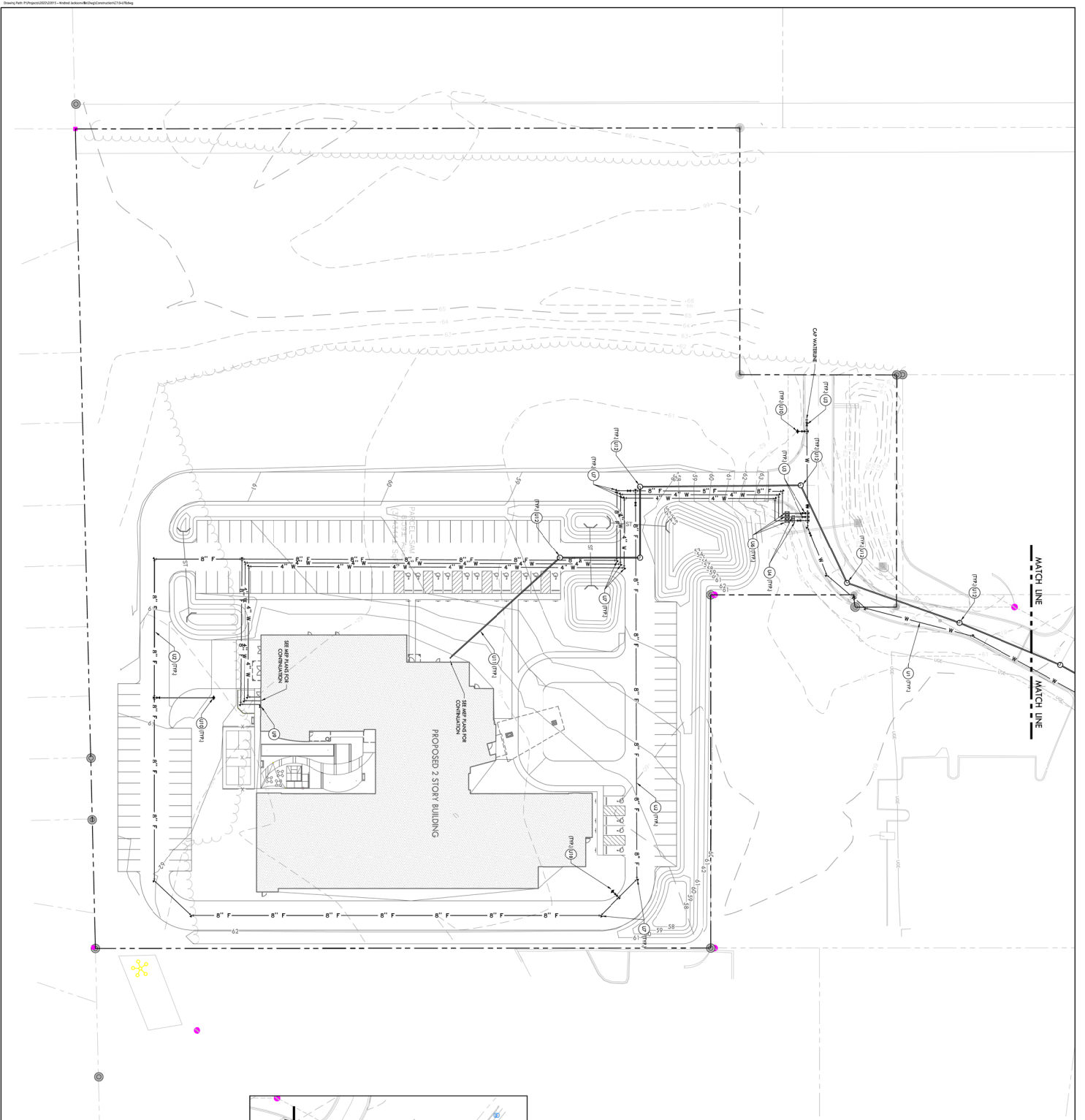
■ SINGLE CURB MANHOLE

■ SINGLE CATCH BASIN

⊙ JUNCTION BOX

NOTES:  
1. REFER TO SHEET C6.0 FOR NOTES.





**UTILITY PLAN KEYNOTES**

CODE	DESCRIPTION	DETAIL	LOCATION
(1)	WATER LINE - SET PLAIN FOR SIZE	-	-
(2)	FIRE LINE - SET PLAIN FOR SIZE	-	-
(3)	GATE VALVE	-	-
(4)	WATER METER - X"	-	-
(5)	POSI INDICATOR VALVE	-	-
(6)	REDUCE PRESSURE ASSEMBLY	-	-
(7)	TEST - SET PLAIN FOR SIZE	-	-
(8)	FIRE DEPARTMENT CONNECTION	-	-
(9)	FIRE HYDRANT ASSEMBLY	-	-
(10)	SANITARY SEWER LINE - SET PLAIN FOR SIZE	-	-
(11)	SANITARY SEWER MANHOLE	-	-
(12)	CLEANOUT	-	-

- PROPOSED UTILITY LEGEND**
- SS - SANITARY SEWER LINE
  - W - WATER LINE
  - GC - GAS LINE
  - E - UNDERGROUND ELECTRIC LINE
  - T - UNDERGROUND TELEPHONE LINE
  - UT - UNDERGROUND TELEPHONE LINE
  - ST - SWIRE TRENCH WALL



**Behavioral Health & Inpatient Rehabilitation**  
**JEFFERSON REGIONAL SPECIALTY HOSPITAL**  
 April 14, 2022  
 JACKSONVILLE, FLORIDA

**ES&S**  
 Earl Swenson Associates, Inc.  
 1033 Dorchester Street  
 Jacksonville, Florida 32203  
 904-249-2940

**Exhibit 4**  
 Page 3 of 3

**UTILITY PLAN**

Sheet Number: **C7.0**

DATE: 2022

DESIGNED BY: [Name]

CHECKED BY: [Name]

DATE: 2022

PROJECT: Behavioral Health & Inpatient Rehabilitation

LOCATION: Jacksonville, Florida

SCALE: 1/2" = 1'-0"