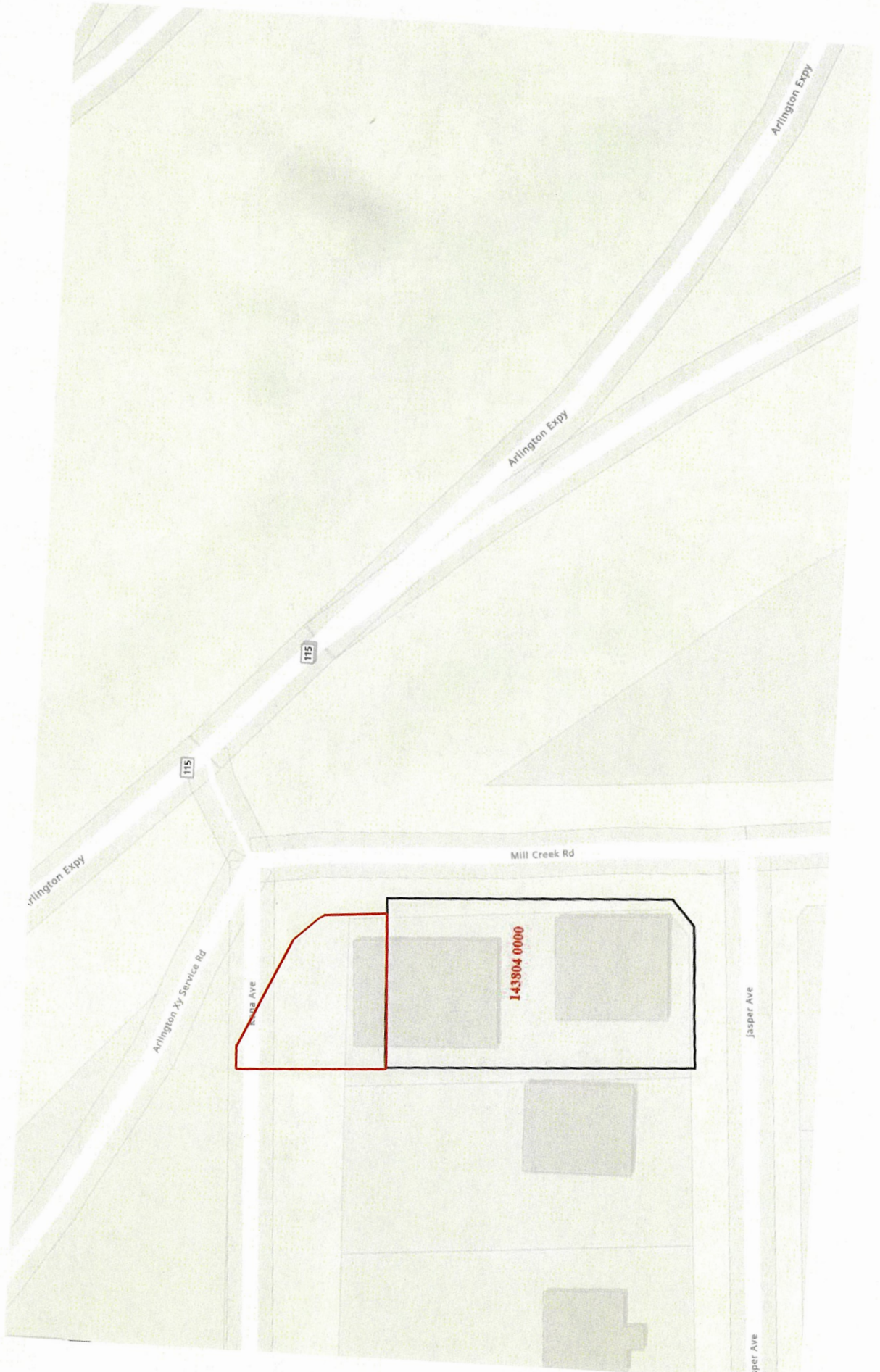


**RE 143804-0000
Kona Ave
Location Map**



RE 143804-0000

Kona Ave

Aerial Map



SKETCH & DESCRIPTION OF PROPOSED ROAD CLOSURE OF A PORTION OF KONA AVENUE

(SURVEYOR'S DESCRIPTION)

PROPOSED CLOSURE OF A PORTION OF KONA AVENUE AS SHOWN ON PLAT OF OAKWOOD VILLA ESTATES AS SHOWN IN PLAT BOOK 8, PAGES 23-25 OF THE CURRENT PUBLIC RECORDS OF DUVAL COUNTY AND BEING MORE PARTICULARLY DESCRIBED AS FOLLOWS:

THAT PART OF KONA AVENUE LYING NORTH OF LOTS 67, 68 AND 69 BLOCK 12-C OF SAID OAKWOOD VILLA ESTATES AND BEING MORE PARTICULARLY DESCRIBED AS FOLLOWS:

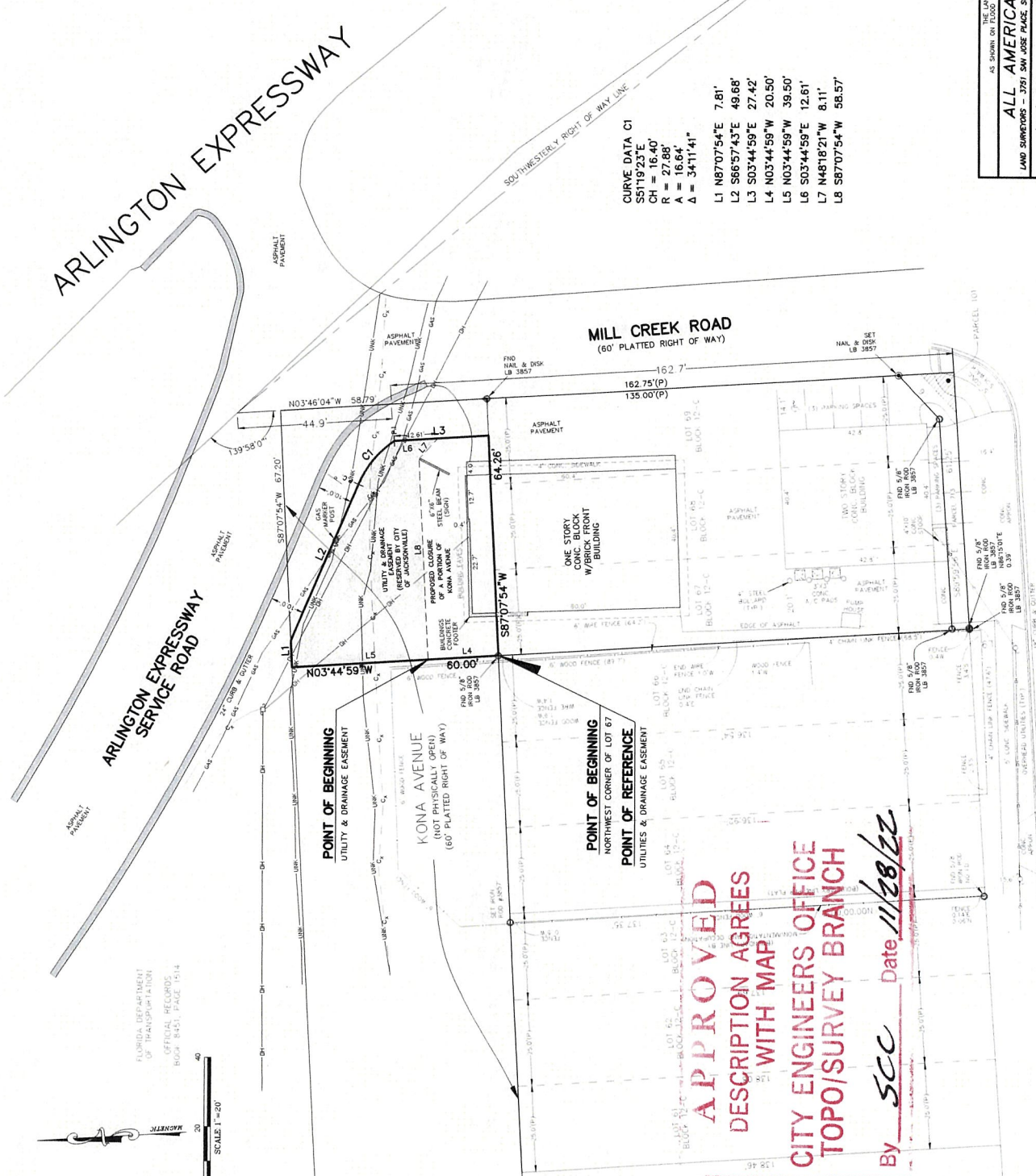
BEGIN AT THE NORTHWEST CORNER OF LOT 67, BLOCK 12-C AS RECORDED IN PLAT BOOK 8, PAGES 23-25 OF THE PUBLIC RECORDS OF DUVAL COUNTY, FLORIDA, THENCE NORTH 03°44'59" WEST ALONG THE NORTHERLY PROLONGATION OF SAID WEST LINE OF SAID LOT 67, A DISTANCE OF 60.00 FEET TO ITS INTERSECTION WITH THE NORTHERLY RIGHT OF WAY LINE OF KONA AVENUE, THENCE NORTH 87°07'54" EAST, ALONG SAID NORTHERLY RIGHT OF WAY LINE OF SAID KONA AVENUE, A DISTANCE OF 7.81 FEET, THENCE DEPARTING SAID NORTHERLY RIGHT OF WAY LINE, SOUTH 66°57'43" EAST, A DISTANCE OF 49.68 FEET TO A POINT OF CURVATURE, THENCE IN A SOUTHEASTERLY DIRECTION ALONG AND AROUND AN ARC OF A CURVE (CONCAVE SOUTHWEST AND HAVING A RADIUS OF 27.88 FEET) AN ARC DISTANCE OF 16.64 FEET (SAID ARC BEING SUBTENDED BY A CHORD BEARING AND DISTANCE OF SOUTH 51°19'23" EAST, 16.40 FEET) TO A POINT OF INTERSECTION, THENCE SOUTH 03°44'59" EAST, A DISTANCE OF 27.42 FEET TO THE NORTH LINE OF LOT 69, BLOCK 12-C AS RECORDED IN PLAT BOOK 8, PAGES 23-25 OF THE PUBLIC RECORDS OF DUVAL COUNTY, FLORIDA, THENCE SOUTH 87°07'54" WEST ALONG THE NORTH LINE OF LOTS 69, 68 AND 67, A DISTANCE OF 64.26 FEET TO THE NORTHWEST CORNER OF SAID LOT 67 AND THE POINT OF BEGINNING.

THE ABOVE DESCRIBED PARCEL IS SUBJECT TO AN EASEMENT FOR UTILITIES AND DRAINAGE, RESERVED BY THE CITY OF JACKSONVILLE, BEING MORE PARTICULARLY DESCRIBED AS FOLLOWS:

FOR A POINT OF REFERENCE, COMMENCE AT THE NORTHWEST CORNER OF LOT 67, BLOCK 12-C AS RECORDED IN PLAT BOOK 8, PAGES 23-25 OF THE PUBLIC RECORDS OF DUVAL COUNTY, FLORIDA, THENCE ALONG THE NORTHERLY PROLONGATION OF SAID WEST LINE OF SAID LOT 67, NORTH 03°44'59" WEST, A DISTANCE OF 20.50 FEET TO THE POINT OF BEGINNING, THENCE CONTINUE NORTH 03°44'59" WEST, A DISTANCE OF 39.50 FEET TO ITS INTERSECTION WITH THE NORTHERLY RIGHT OF WAY LINE OF KONA AVENUE, THENCE NORTH 87°07'54" EAST, ALONG SAID NORTHERLY RIGHT OF WAY LINE OF SAID KONA AVENUE, A DISTANCE OF 7.81 FEET, THENCE DEPARTING SAID NORTHERLY RIGHT OF WAY LINE, SOUTH 66°57'43" EAST, A DISTANCE OF 49.68 FEET TO A POINT OF CURVATURE, THENCE IN A SOUTHEASTERLY DIRECTION ALONG AND AROUND AN ARC OF A CURVE (CONCAVE SOUTHWEST AND HAVING A RADIUS OF 27.88 FEET) AN ARC DISTANCE OF 16.64 FEET (SAID ARC BEING SUBTENDED BY A CHORD BEARING AND DISTANCE OF SOUTH 51°19'23" EAST, 16.40 FEET) TO A POINT OF INTERSECTION, THENCE SOUTH 03°44'59" EAST, A DISTANCE OF 12.61 FEET, THENCE 48°18'21" WEST, A DISTANCE OF 8.11 FEET, THENCE SOUTH 87°07'54" WEST, A DISTANCE OF 96.57 FEET TO THE POINT OF BEGINNING.

LESS AND EXCEPT ANY PART LYING WITHIN THE SERVICE ROAD OF ARLINGTON EXPRESSWAY RIGHT OF WAY.

SUBJECT PARCEL CONTAINING: 3,059 SQUARE FEET / 0.07 ACRES MORE OR LESS.



CURVE DATA C1

S87°07'54"E 7.81'
 CH = 16.40'
 R = 27.88'
 A = 16.64'
 Δ = 34°11'41"

L1 N87°07'54"E 7.81'
 L2 S86°57'43"E 49.68'
 L3 S03°44'59"E 27.42'
 L4 N03°44'59"W 20.50'
 L5 N03°44'59"W 39.50'
 L6 S03°44'59"E 12.61'
 L7 N48°18'21"W 8.11'
 L8 S87°07'54"W 56.57'

THE LAND SHOWN HEREON IS IN THE SPECIAL FLOOD HAZARD ZONE "X" UNDEGROUND ENCROACHMENTS NOT LOCATED AS SHOWN ON FLOOD INSURANCE RATE MAP 0383 H FOR DUVAL COUNTY, FLORIDA, DATED 08-10-13

ALL AMERICAN SURVEYORS OF FLORIDA, INC.
 LMD SURVEYORS - 3751 SW JOSE PLACE, SUITE 15 - JACKSONVILLE, FLORIDA 32257 - 904/278-0068 - LICENSED AND BUSINESS NO. 3857

SKETCH TO SHOW ONLY

SURVEY NOT VALID UNLESS EMBOSSED BY SEA
 JAMES D. HARRISON, JR., No. 2847
 MICHAEL A. GARRETT, No. 6843

FLORIDA REGISTERED SURVEYOR AND MAPPER

DATE 03-11-2022

SCALE 1"=25'

LEGEND & ABBREVIATIONS:
 C-X UNDERGROUND COMMUNICATIONS
 UNK UNDERGROUND UTILITIES
 GAS UNDERGROUND GAS

LEGEND:
 C1 CONCRETE
 C2 CONCRETE
 C3 CONCRETE
 C4 CONCRETE
 C5 CONCRETE
 C6 CONCRETE
 C7 CONCRETE
 C8 CONCRETE
 C9 CONCRETE
 C10 CONCRETE
 C11 CONCRETE
 C12 CONCRETE
 C13 CONCRETE
 C14 CONCRETE
 C15 CONCRETE
 C16 CONCRETE
 C17 CONCRETE
 C18 CONCRETE
 C19 CONCRETE
 C20 CONCRETE
 C21 CONCRETE
 C22 CONCRETE
 C23 CONCRETE
 C24 CONCRETE
 C25 CONCRETE
 C26 CONCRETE
 C27 CONCRETE
 C28 CONCRETE
 C29 CONCRETE
 C30 CONCRETE
 C31 CONCRETE
 C32 CONCRETE
 C33 CONCRETE
 C34 CONCRETE
 C35 CONCRETE
 C36 CONCRETE
 C37 CONCRETE
 C38 CONCRETE
 C39 CONCRETE
 C40 CONCRETE
 C41 CONCRETE
 C42 CONCRETE
 C43 CONCRETE
 C44 CONCRETE
 C45 CONCRETE
 C46 CONCRETE
 C47 CONCRETE
 C48 CONCRETE
 C49 CONCRETE
 C50 CONCRETE
 C51 CONCRETE
 C52 CONCRETE
 C53 CONCRETE
 C54 CONCRETE
 C55 CONCRETE
 C56 CONCRETE
 C57 CONCRETE
 C58 CONCRETE
 C59 CONCRETE
 C60 CONCRETE
 C61 CONCRETE
 C62 CONCRETE
 C63 CONCRETE
 C64 CONCRETE
 C65 CONCRETE
 C66 CONCRETE
 C67 CONCRETE
 C68 CONCRETE
 C69 CONCRETE
 C70 CONCRETE
 C71 CONCRETE
 C72 CONCRETE
 C73 CONCRETE
 C74 CONCRETE
 C75 CONCRETE
 C76 CONCRETE
 C77 CONCRETE
 C78 CONCRETE
 C79 CONCRETE
 C80 CONCRETE
 C81 CONCRETE
 C82 CONCRETE
 C83 CONCRETE
 C84 CONCRETE
 C85 CONCRETE
 C86 CONCRETE
 C87 CONCRETE
 C88 CONCRETE
 C89 CONCRETE
 C90 CONCRETE
 C91 CONCRETE
 C92 CONCRETE
 C93 CONCRETE
 C94 CONCRETE
 C95 CONCRETE
 C96 CONCRETE
 C97 CONCRETE
 C98 CONCRETE
 C99 CONCRETE
 C100 CONCRETE

APPROVED
 DESCRIPTION AGREES
 WITH MAP
 CITY ENGINEERS OFFICE
 TOPO/SURVEY BRANCH

By SCC Date 11/28/22