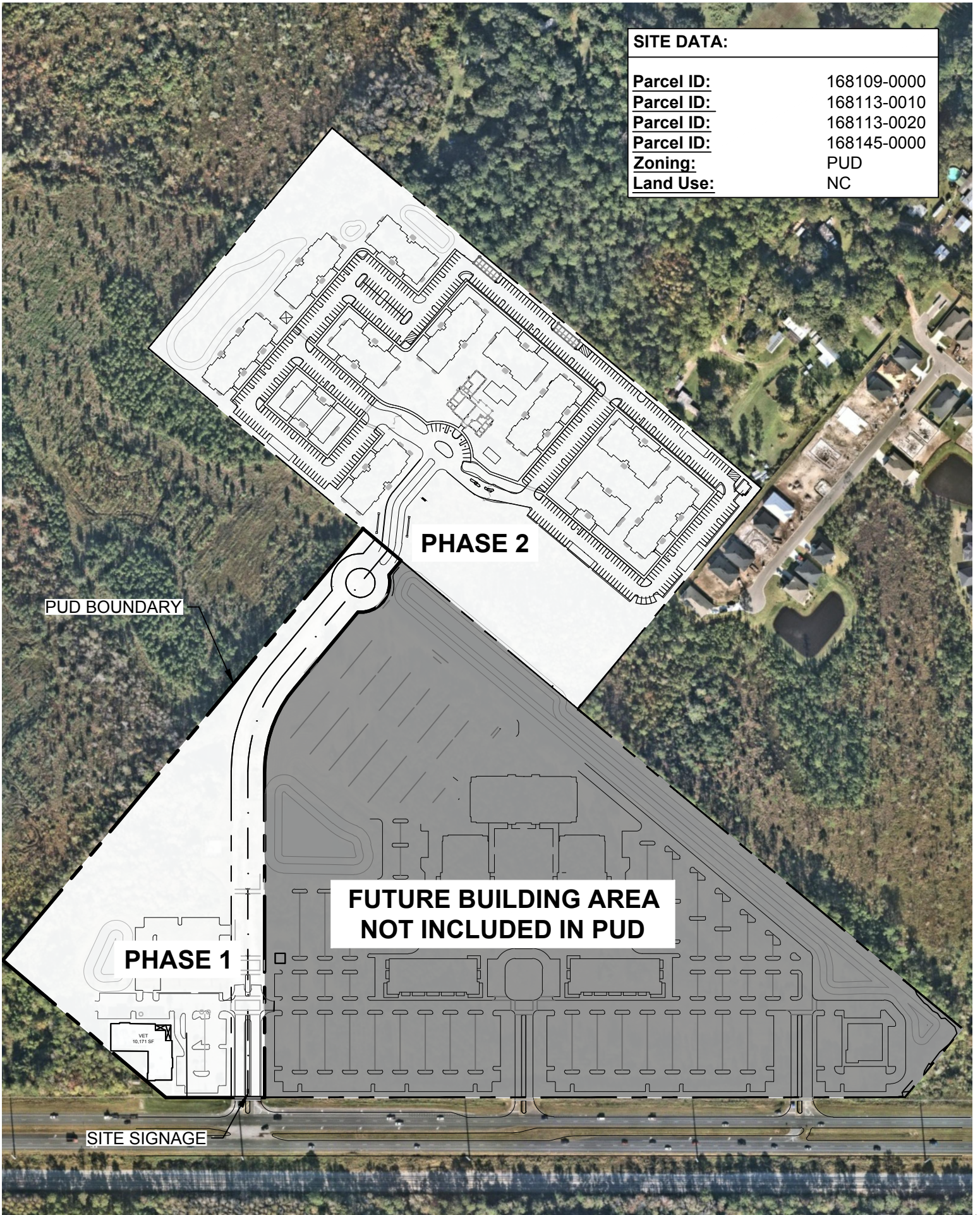


SITE DATA:

Parcel ID:	168109-0000
Parcel ID:	168113-0010
Parcel ID:	168113-0020
Parcel ID:	168145-0000
Zoning:	PUD
Land Use:	NC



PUD BOUNDARY

PHASE 2

**FUTURE BUILDING AREA
NOT INCLUDED IN PUD**

PHASE 1

WET
10.171 SF

SITE SIGNAGE

PHASE 1 SITE DATA:

Parcel ID: 168113-0020
Parcel ID: 168145-0000
Parcel ID: 168113-0010
Parcel Area: ~ 9.91 ac
Zoning: PUD
Land Use: NC

Minimum Front Yard: 0 Feet
Minimum Side Yard: 0 Feet
Minimum Rear Yard: 10 Feet

Parking:
1 Space per 300 SF of GFA

PHASE 2

PROPERTY BOUNDARY

POND

**FUTURE BUILDING
AREA
NOT INCLUDED IN PUD**

POND

VET
10,171 SF

SITE SIGNAGE

PHASE 2 SITE DATA:

Parcel ID: 168109-0000
Parcel Area: ~ 21.12 ac
Zoning: PUD
Land Use: NC

Minimum Front Yard: 20 Feet
Minimum Side Yard: 10 Feet
Minimum Rear Yard: 10 Feet

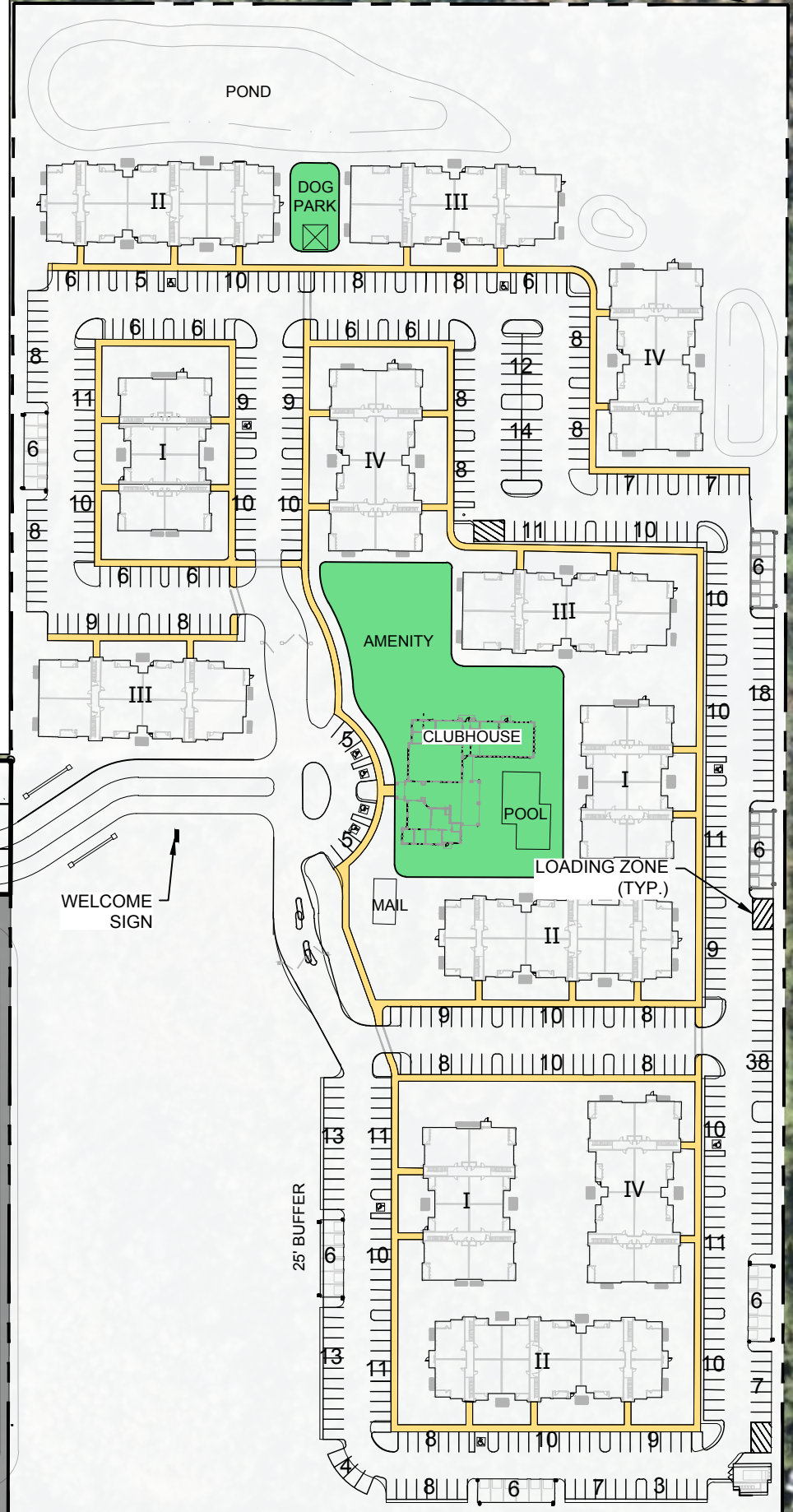
Active Recreation Area:

Required
 150 sf x 324 Units = 48,600 sf
 Provided
 Amenity Area: 42,915 sf
 Sidewalk Area: 28,200 sf
Total Amenity Area: 71,115 sf

Parking:

Required
1.8 Spaces per unit (PUD)
 1.8 Spaces x 324 Units = 583 Spaces
ADA Spaces: 2% of total parking
 601 Spaces x 2% = 12 Spaces
Compact Spaces: 30% Max
3 Loading Spaces (PUD) = 3 Spaces
0.074 Bike Spaces per unit (PUD)
 0.074 Spaces x 324 Units = 24 Spaces
 Provided
 Standard Parking Spaces: 556 Spaces
 Garage Spaces: 36 Spaces
 ADA Spaces: 12 Spaces
 Compact: 0 Spaces
 Loading Spaces: 3 Loading Spaces
 Bicycle Parking: Will be Provided per PUD
Total Spaces: 604 Spaces

PROPERTY BOUNDARY



LEGEND

- AMENITY AREA
- SIDEWALK AREA

FUTURE BUILDING AREA NOT INCLUDED IN PUD