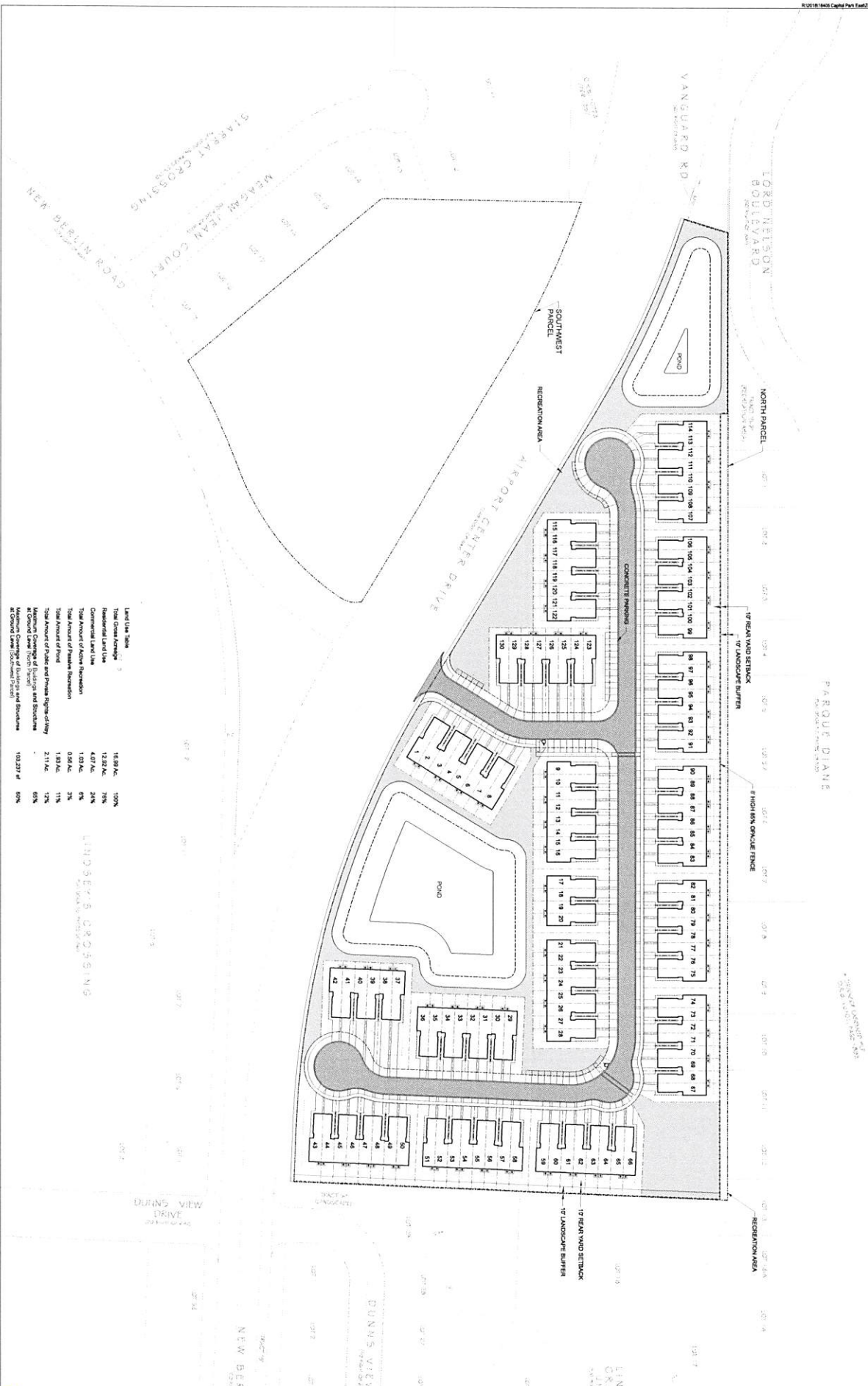


Exhibit E PUD Conceptual Site Plan



Land Use Table	Area (Ac.)	Percentage
Total Open Space	16.89 Ac.	100%
Residential Land Use	12.82 Ac.	76%
Commercial Land Use	4.07 Ac.	24%
Total Amount of Active Recreation	1.03 Ac.	6%
Total Amount of Passive Recreation	0.98 Ac.	3%
Total Amount of Paved	1.81 Ac.	11%
Total Amount of Public and Private Recreation	2.11 Ac.	12%
Maximum Change of Slope and Structures	-	65%
Maximum Change of Slope and Structures at Ground Level (See Table D-2.1)	103.237 ft	60%

LANDSCAPE CROSSING

6/6/19

Taylor & White, Inc.
 Civil Design & Consulting Engineers
 15140 Victoria Kings Road S., Suite 102
 Jacksonville, Florida 32217
 Phone: 904.444.1871 • Fax: 904.444.3991
 www.taylorandwhite.com

Capitol Park East

Site Plan

No.	Date	Description	Initials