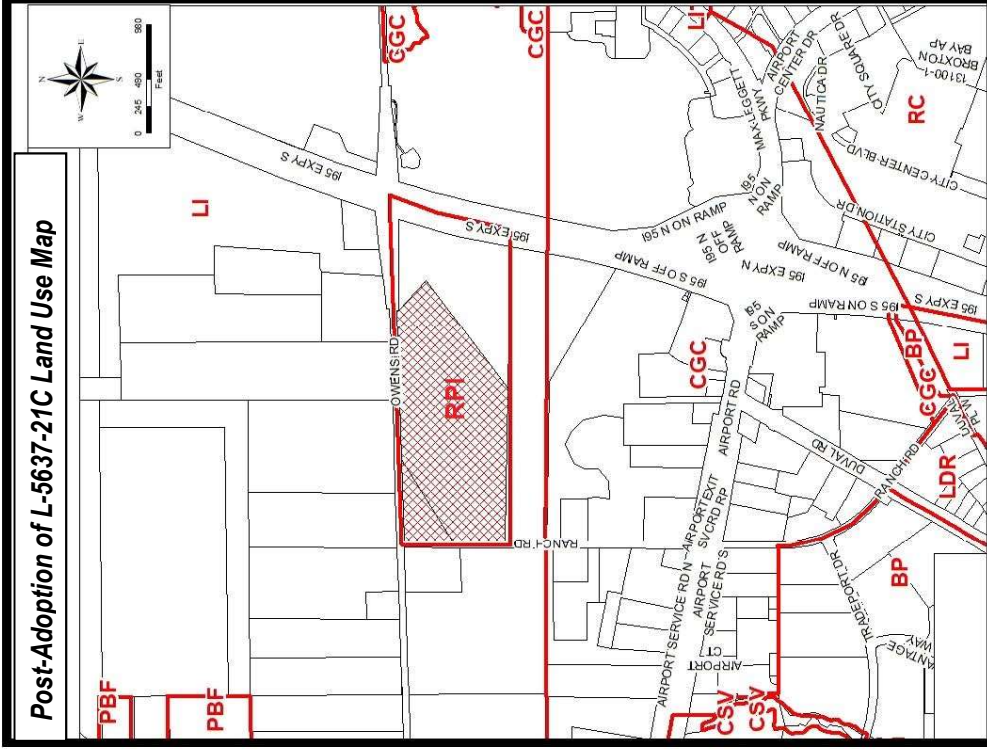


Pre-Adoption of L-5637-21C Land Use Map



Post-Adoption of L-5637-21C Land Use Map

**Request for Small Scale Land Use Amendment to Future Land Use Map Series**



**From: Community/General Commercial (CGC)**

**To: Residential-Professional-Institutional (RPI)**

**Planning District: 6**

**Council District: 7**

**Identification Number: L-5637-21C**

**Exhibit 2 (Page 1 of 1)**