

**Staff Report on Proposed 2024B Series Text Amendment
to the Future Land Use Map Series of the
2045 Comprehensive Plan**

ORDINANCE 2024-191

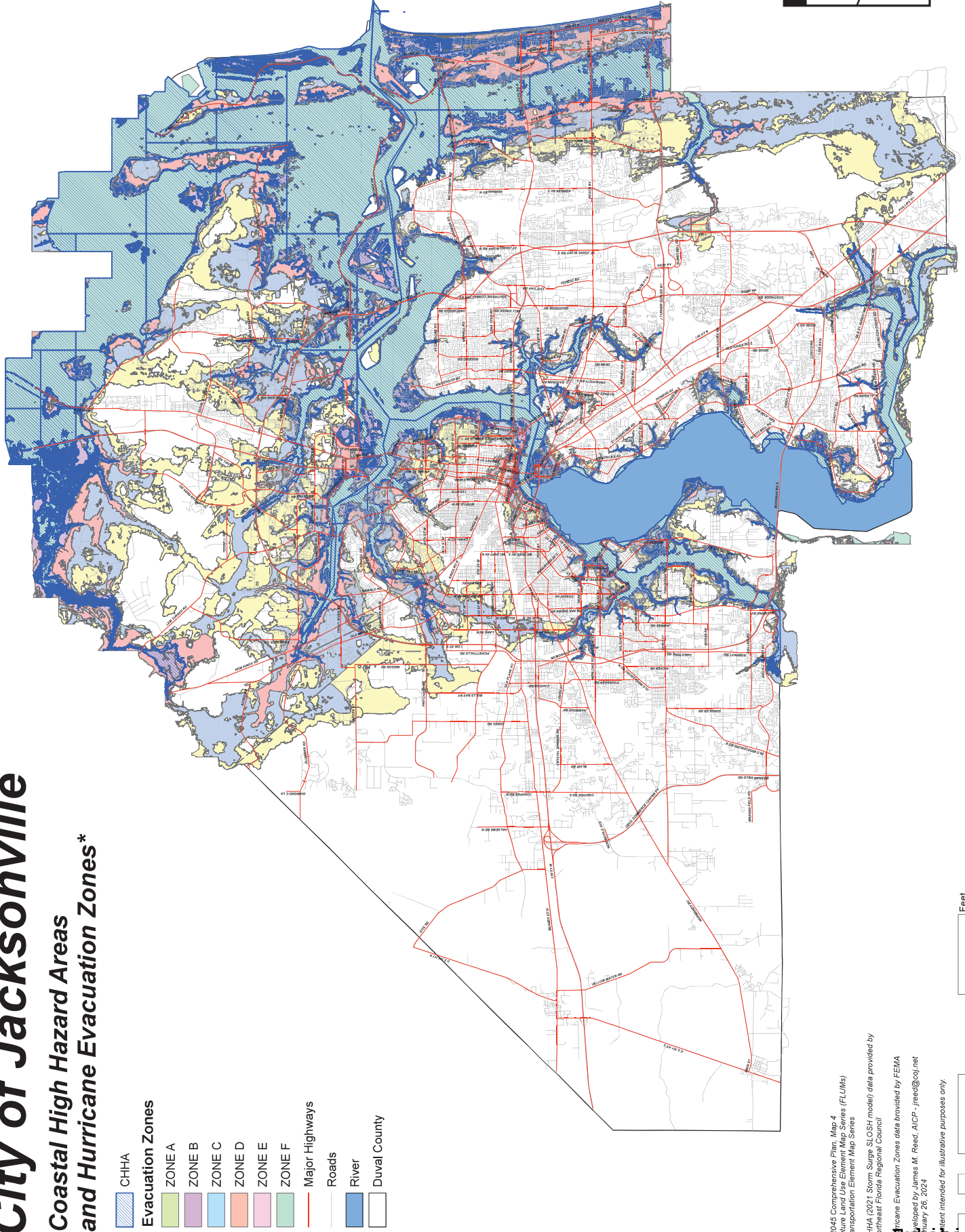
Ordinance 2024-191 is an amendment to the Coastal High Hazard Areas and Hurricane Evacuation Zones Map of the Future Land Use Map Series from the 2045 Comprehensive Plan.

Section 163.3179, Florida Statutes requires designation of coastal high-hazard areas (CHHA) in the local comprehensive plan. The statute defines the CHHA as the area below the elevation of the category 1 storm surge line as established by a Sea, Lake, and Overland Surges from Hurricanes (SLOSH) computerized storm surge model. The SLOSH model for northeast Florida is periodically updated by the Northeast Florida Regional Council and this amendment updates the map consistent with the most recent data.

The Planning and Development Department recommends **APPROVAL** of the text amendment in the attached **EXHIBIT 1** submitted as **Ordinance 2024-191**.

City of Jacksonville

Coastal High Hazard Areas and Hurricane Evacuation Zones*



- CHHA
- Evacuation Zones
 - ZONE A
 - ZONE B
 - ZONE C
 - ZONE D
 - ZONE E
 - ZONE F
- Major Highways
- Roads
- River
- Duval County

* 2015 Comprehensive Plan, Map 4
 Future Land Use Element Map Series (FLUMS)
 Transportation Element Map Series
 CHHA (2017 Storm Surge SLOSH model) data provided by
 Northeast Florida Regional Council
 Hurricane Evacuation Zones data provided by FEMA
 Developed by James M. Reed, AICP - jreed@coj.net
 January 26, 2024
 Not intended for illustrative purposes only.