

# The Gift of Life: Organ, Tissue and Eye Donation

Jessica Scheidler Grossberg  
Public Education Coordinator



# Statistics

- One organ donor can save up to **8 lives**
  - Kidneys, lungs, heart, liver, pancreas, small intestine
- One tissue donor can enhance more than **75 lives**
  - Skin, tendons, veins, ligaments, heart valves
- One cornea donor can restore sight to **two people**

## ORGAN DONATION



EYE



KIDNEY



LUNG



INTESTINES



LIVER



TISSUE



HEART



PANCREAS



1 ORGAN DONOR  
CAN SAVE UP TO  
**8 LIVES**



1 TISSUE DONOR  
CAN ENHANCE THE  
LIVES OF MORE THAN  
**75 PEOPLE**



1 CORNEA DONOR CAN  
RESTORE SIGHT TO  
**2 PEOPLE**



# Why Become a Donor?

- The Need
  - 103,000+ patients on the transplant waiting list
  - 5,400 waiting in Florida
  - Every 10 minutes a patient is added to the list
  - 22 people die each day waiting for a transplant
  - 84% of the list awaiting kidneys

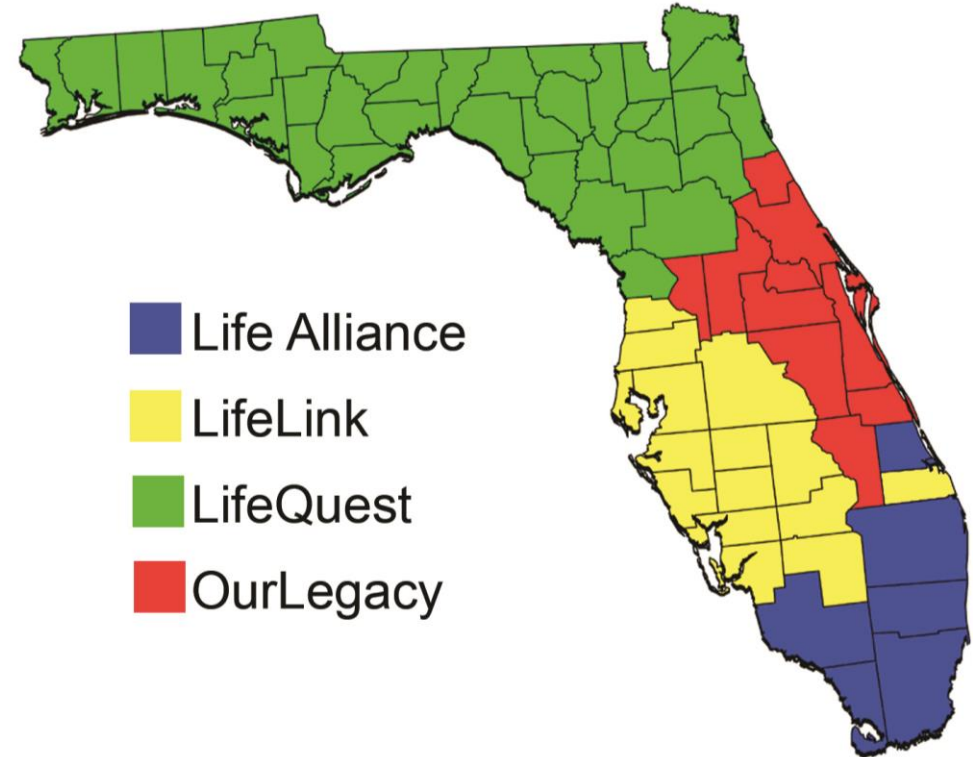
Mayo Clinic





- LifeQuest is the organ procurement organization across all of Northeast Florida.
- Our mission is to educate as many individuals about the power of organ donation, but especially high school students.

## Who We Are



# History

## 2000: Decision Donation

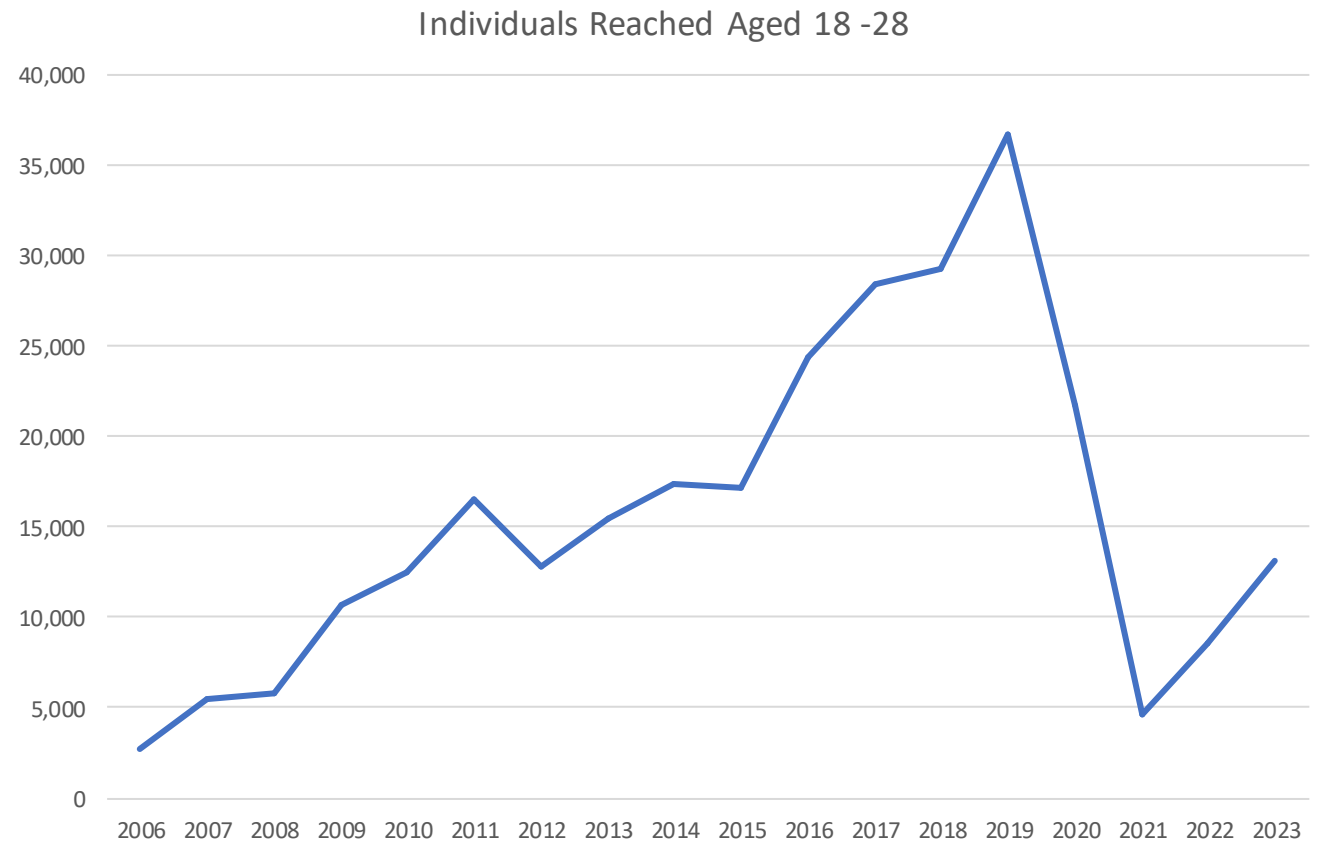
- Started presenting in districts across the DSA
- Pre-presentation: 30% favored enrollment
- Post-presentation: 70% favored enrollment

## 2009: Florida's Donor Registry

- Individuals could enroll directly on the registry
- Ability to track registrations and donor designation rates by age group
- More people reached & registration rates increased each year

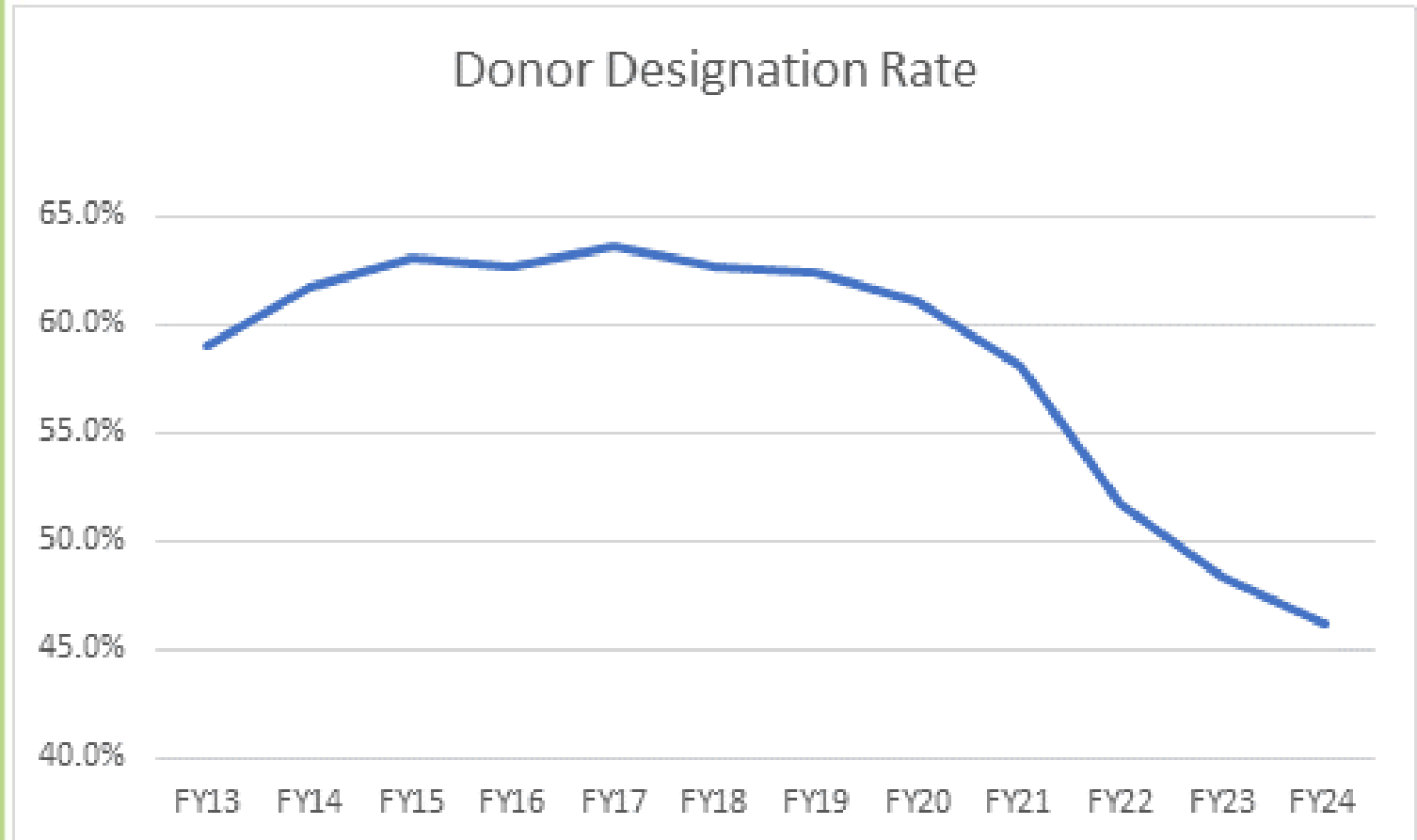
## 2020: COVID

- Individuals reached & registrations declined rapidly

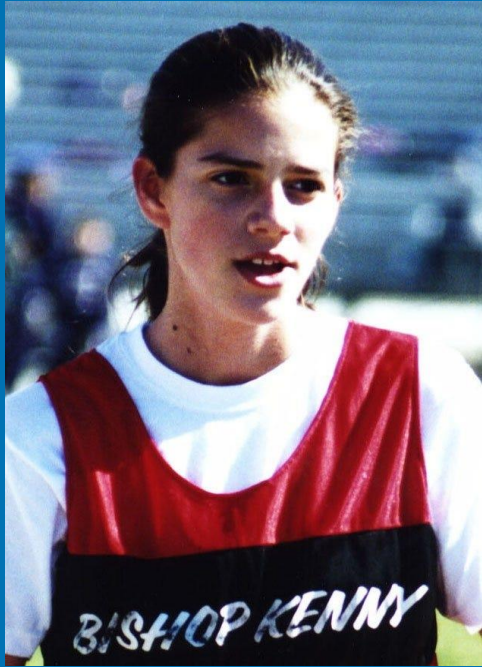


# Covid

- Covid hit and Jacksonville locked down. It became difficult to educate people about donation.
- Immediately registry numbers started declining and haven't gone up since.
- The worst part is this impacted authorization, which impacts donation, which impacts the number of lives we can save.



# Here in Duval

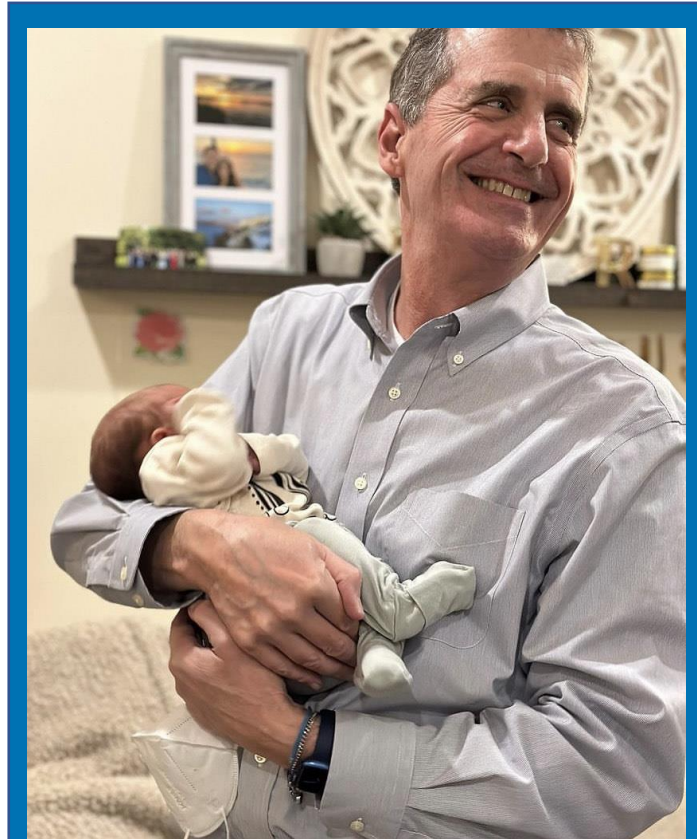


Katie Caples, Bishop Kenny student, donated 5 organs after car crash.

Naishanda Larramore's (First Coast High School teacher) husband passed away waiting for a heart and kidney. Leonard Larramore played for the Buffalo Bills.



Gerry Polcari holding his first granddaughter, Ava Lynne, born less than two years after he received his new liver.  
"I never would have seen my daughter get married, let alone meet my granddaughter."





Save lives! Say "Yes!"  
 2021-2022 Statewide Organ Donor Registration Rates  
 (Among driver license customers who completed in-office transactions)



Donor Designation Rate (DDR): The percentage of customers who say "yes" when asked, "Do you want to be an organ donor?" during a driver license transaction.

Statewide Driver License DDR	Jan-24	Feb-24	Mar-24	Apr-23	May-23	Jun-23	Jul-23	Aug-23	Sep-23	Oct-23	Nov-23	Dec-23	YTD
	38%	37%	37%	40%	39%	39%	39%	38%	38%	38%	38%	38%	38%



County	Jan-24	Feb-24	Mar-24	Apr-23	May-23	Jun-23	Jul-23	Aug-23	Sep-23	Oct-23	Nov-23	Dec-23	YTD
Nassau	63%	61%	64%	63%	62%	61%	61%	65%	63%	64%	60%	60%	64%
Gulf	57%	66%	57%	60%	64%	60%	68%	63%	68%	58%	61%	63%	63%
Santa Rosa	62%	60%	61%	65%	64%	67%	64%	65%	63%	61%	64%	64%	62%
Walton	62%	59%	66%	66%	55%	69%	73%	66%	64%	65%	52%	60%	62%
Citrus	60%	59%	61%	62%	61%	62%	59%	61%	61%	61%	59%	61%	61%
St Johns	60%	59%	59%	61%	62%	61%	61%	61%	61%	61%	61%	62%	61%
Glenn	54%	65%	57%	61%	66%	64%	64%	59%	62%	57%	60%	51%	60%
Franklin	57%	59%	62%	63%	61%	67%	65%	67%	56%	50%	53%	57%	60%
Wakulla	61%	58%	60%	60%	63%	59%	58%	59%	58%	58%	62%	63%	60%
Sumter	59%	57%	57%	60%	63%	60%	59%	59%	60%	58%	61%	60%	59%
Okaloosa	58%	58%	57%	60%	59%	60%	59%	60%	57%	59%	58%	59%	59%
Lafayette	59%	54%	64%	61%	57%	61%	53%	55%	57%	62%	62%	57%	58%
Union	61%	62%	56%	63%	55%	58%	56%	55%	56%	54%	52%	57%	57%
Charlotte	55%	54%	54%	57%	56%	56%	56%	55%	54%	55%	55%	55%	55%
Bradford	57%	56%	57%	57%	56%	60%	55%	60%	57%	55%	56%	41%	55%
Levy	53%	56%	53%	58%	54%	57%	54%	55%	54%	53%	55%	55%	55%
Holmes	54%	48%	56%	58%	55%	59%	52%	51%	58%	55%	55%	50%	54%
Sarasota	53%	52%	52%	56%	55%	54%	54%	54%	52%	53%	55%	55%	54%
Dixie	48%	56%	52%	53%	53%	53%	53%	53%	50%	55%	49%	53%	53%
Clay	54%	52%	52%	52%	53%	54%	55%	54%	53%	53%	52%	52%	53%
Flagler	52%	52%	53%	55%	53%	54%	54%	52%	53%	53%	51%	51%	53%
Brevard	51%	52%	51%	54%	53%	55%	54%	53%	53%	54%	54%	53%	53%
Bay	50%	51%	50%	54%	52%	55%	52%	52%	53%	50%	53%	53%	52%
Putnam	51%	52%	50%	53%	51%	54%	52%	50%	52%	52%	51%	54%	52%
Columbia	54%	51%	49%	53%	52%	54%	51%	53%	51%	52%	49%	51%	52%
Highlands	54%	49%	51%	54%	51%	53%	52%	52%	50%	52%	50%	50%	52%
Hernando	49%	51%	52%	51%	53%	50%	52%	50%	51%	50%	48%	52%	51%
Pinellas	48%	48%	48%	53%	53%	53%	53%	51%	51%	50%	50%	51%	51%
Washington	48%	56%	52%	52%	51%	53%	50%	51%	49%	47%	52%	44%	51%
Baker	50%	52%	55%	49%	47%	51%	49%	49%	54%	52%	47%	50%	50%
Escambia	49%	49%	47%	52%	52%	51%	50%	51%	50%	51%	50%	50%	50%
Suwannee	47%	47%	47%	56%	53%	49%	51%	54%	49%	53%	49%	47%	50%
Indian River	49%	49%	49%	51%	50%	50%	51%	50%	48%	50%	49%	50%	50%
Pasco	49%	49%	48%	51%	50%	50%	50%	49%	48%	48%	50%	51%	50%
Marion	48%	48%	48%	52%	50%	50%	51%	49%	50%	50%	49%	49%	50%
Liberty	42%	49%	51%	54%	59%	49%	48%	39%	51%	50%	50%	49%	50%
Lake	48%	47%	48%	50%	50%	49%	48%	48%	47%	48%	47%	49%	48%
Volusia	47%	48%	45%	49%	49%	49%	48%	48%	47%	46%	48%	47%	48%
Alachua	47%	46%	47%	50%	49%	49%	48%	47%	47%	47%	48%	47%	48%
Okechobee	46%	47%	45%	47%	50%	49%	43%	47%	49%	50%	50%	47%	47%
Taylor	53%	50%	53%	47%	47%	39%	48%	46%	44%	47%	42%	49%	47%
Martin	46%	44%	42%	51%	49%	47%	49%	49%	47%	47%	45%	47%	47%
Seminole	46%	45%	44%	47%	48%	47%	46%	46%	46%	46%	47%	46%	46%
Manatee	44%	41%	43%	46%	46%	45%	47%	46%	44%	45%	47%	45%	45%
Lee	43%	43%	41%	48%	46%	45%	45%	45%	44%	44%	44%	43%	44%
Jackson	46%	46%	43%	46%	43%	41%	44%	44%	43%	45%	47%	46%	44%
Jefferson	43%	40%	47%	47%	47%	49%	43%	45%	42%	41%	43%	45%	44%
Hardee	43%	42%	39%	43%	45%	42%	44%	49%	45%	46%	46%	47%	44%
Monroe	42%	44%	45%	44%	45%	44%	41%	42%	41%	44%	46%	44%	43%
Calhoun	37%	42%	38%	36%	42%	48%	56%	44%	41%	42%	44%	48%	43%
Desoto	42%	40%	35%	46%	43%	44%	46%	44%	45%	42%	43%	40%	42%
Hamilton	38%	41%	43%	47%	43%	42%	53%	43%	38%	46%	37%	38%	42%
Madison	45%	39%	38%	45%	46%	39%	42%	41%	41%	43%	39%	43%	42%
Polk	40%	39%	39%	44%	42%	43%	44%	42%	41%	41%	41%	41%	41%
Collier	38%	40%	39%	45%	42%	42%	42%	41%	42%	41%	42%	41%	41%
Hillsborough	40%	39%	39%	44%	42%	43%	42%	42%	42%	40%	40%	40%	41%
Hendry	42%	39%	40%	42%	40%	41%	38%	42%	42%	39%	42%	41%	41%
Leon	39%	39%	38%	40%	39%	44%	40%	42%	41%	39%	38%	40%	40%
St. Lucie	38%	38%	37%	40%	41%	39%	37%	41%	38%	42%	40%	38%	39%
Duval	36%	37%	35%	38%	38%	37%	38%	37%	36%	37%	37%	37%	37%
Osceola	33%	33%	32%	37%	36%	35%	34%	35%	34%	34%	34%	33%	34%
Orange	31%	31%	31%	34%	34%	33%	33%	33%	32%	31%	32%	32%	32%
Palm Beach	28%	26%	26%	30%	29%	29%	28%	29%	28%	27%	27%	29%	28%
Gadsden	27%	25%	27%	29%	30%	27%	25%	29%	29%	28%	26%	35%	28%
Tax Collector Office DDR	43%	43%	42%	46%	45%	45%	43%	44%	44%	44%	44%	44%	44%

FLORIDA DEPARTMENT OF HIGHWAY SAFETY AND MOTOR VEHICLE OFFICES

Department of Highway Safety and Motor Vehicle Offices	Jan-24	Feb-24	Mar-24	Apr-23	May-23	Jun-23	Jul-23	Aug-23	Sep-23	Oct-23	Nov-23	Dec-23	YTD
DHSMV Site	38%	35%	39%	39%	40%	37%	41%	35%	38%	37%	40%	38%	38%
JHSMV FLOWmobiles	22%	23%	23%	24%	23%	22%	22%	22%	22%	23%	22%	22%	23%
Miami-Dade	18%	18%	18%	22%	20%	20%	19%	19%	19%	19%	19%	18%	19%
State Issuance (DMV) DDR	21%	22%	22%	24%	23%	22%	21%	21%	21%	22%	22%	21%	22%

# How You Save Lives





# Be a Hero

- Ways to help:
  - Work together to educate our city
  - First responders
  - Community events
  - Religious organizations
  - High Schools/Colleges



# How You Can Save Lives

## DCPS Conference



## UF Health



Contact Jessica Scheidler Grossberg at  
[jsch0014@lifequest.ufl.edu](mailto:jsch0014@lifequest.ufl.edu)

@lifequestfla

