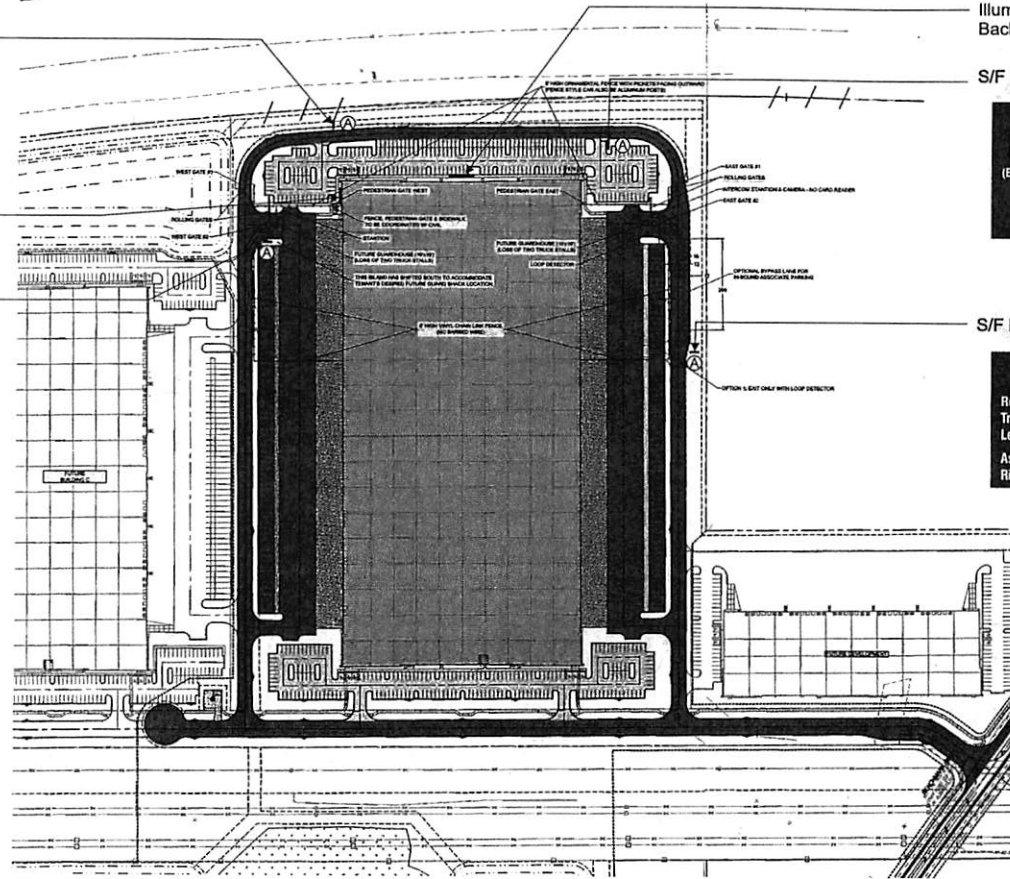


S/F Directional Sign 4



Illuminated Letters on a Background Panel (KS1901472F)

S/F Directional Sign 2



Illuminated Letters on a Background Panel (KS1901472E)

S/F Directional Sign 3



S/F Directional Sign 1



SITE PLAN

N. T. S.



Kieffer | Starlite
National Sign Manufacturers and Consultants
Dallas/Ft. Worth | Chicago | Sheboygan | Charlotte

ACCOUNT: **ULTA BEAUTY** Distribution Center
LOCATION: **Jacksonville, FL**
ACCT.REP: **LC** DESIGNER: **MAK**
DATE: **4/16/19**
COMPANION FILES



REVISIONS:

- ▲ Revised directional verbage & location
- ▲ Move directional sign 3, add directional sign 4
- ▲
- ▲
- ▲
- ▲
- ▲
- ▲

INITIALS & DATE:

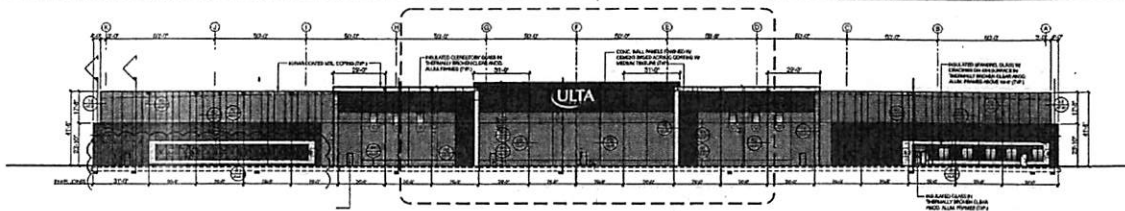
MAK 4/25/19
MAK 5/2/19

This is an original unpublished drawing submitted for use in connection with a project being planned for you by Kieffer Holding Co. It is not to be reproduced, copied or exhibited in any fashion without the written permission of Kieffer Holding Company.

For Contact Information
visit us at
www.kssingroup.com

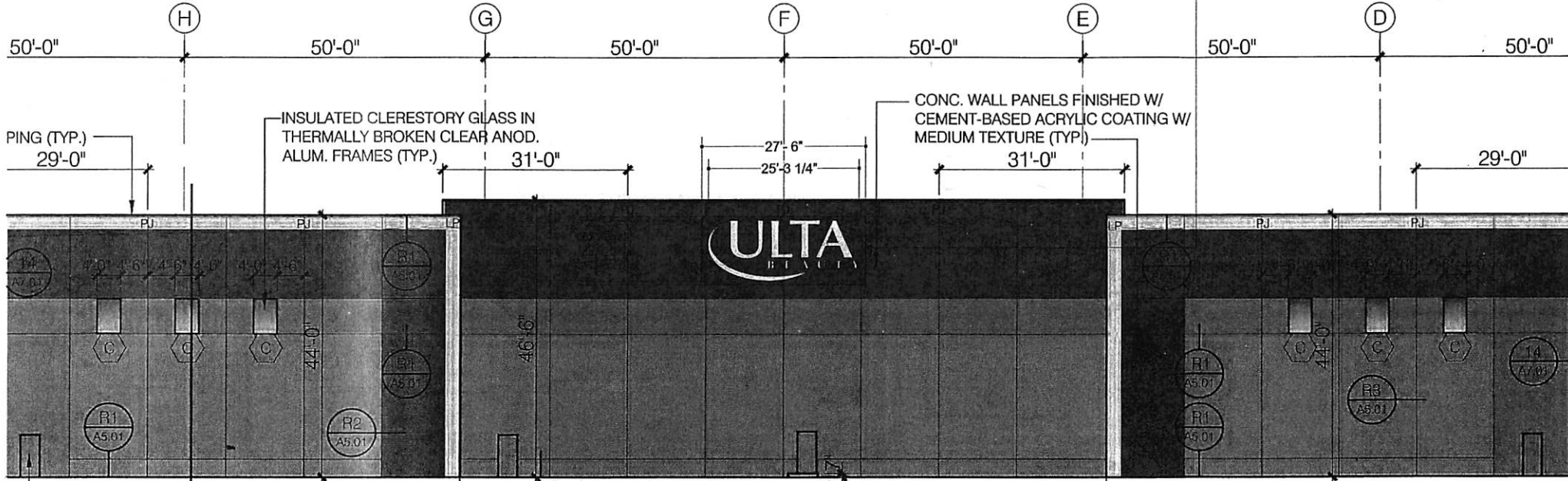
KS1901472

Landlord Signature: _____ Printed Name: _____ Company: _____ Date: _____



PROPOSED SIGN LOCATION ON FULL NORTH ELEVATION

Internally Illuminated Letters on a Background Panel flush mounted to concrete wall. Reference Drawing KS1902472E for fabrication specifications.
AREA = 316.25 Sq. FT.



PROPOSED SIGN LOCATION ON PARTIAL NORTH ELEVATION

Scale: 1/16" = 1'-0"

Kieffer | Starlite
National Sign Manufacturers and Consultants
Dallas/FL Worth | Chicago | Sheboygan | Charlotte

ACCOUNT: **ULTA BEAUTY** Distribution Center
LOCATION: **Jeffersonville, FL**
ACCT. REP: **LC** DESIGNER: **MAX**
DATE: **4/16/19**
COMPANION FILES

REVISIONS:	INITIALS & DATE:
▲ -	-
▲ -	-
▲ -	-
▲ -	-
▲ -	-
▲ -	-
▲ -	-
▲ -	-
▲ -	-
▲ -	-

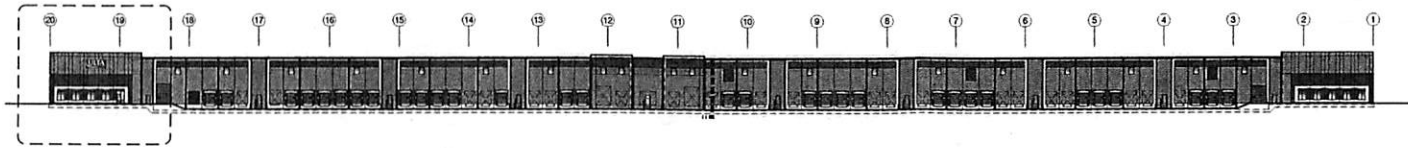
This is an original unpublished drawing submitted for use in connection with a project being planned for you by Kieffer Holding Co. It is not to be reproduced, copied or exhibited in any fashion without the written permission of Kieffer Holding Company.

For Contact Information
visit us at
www.kssigngroup.com

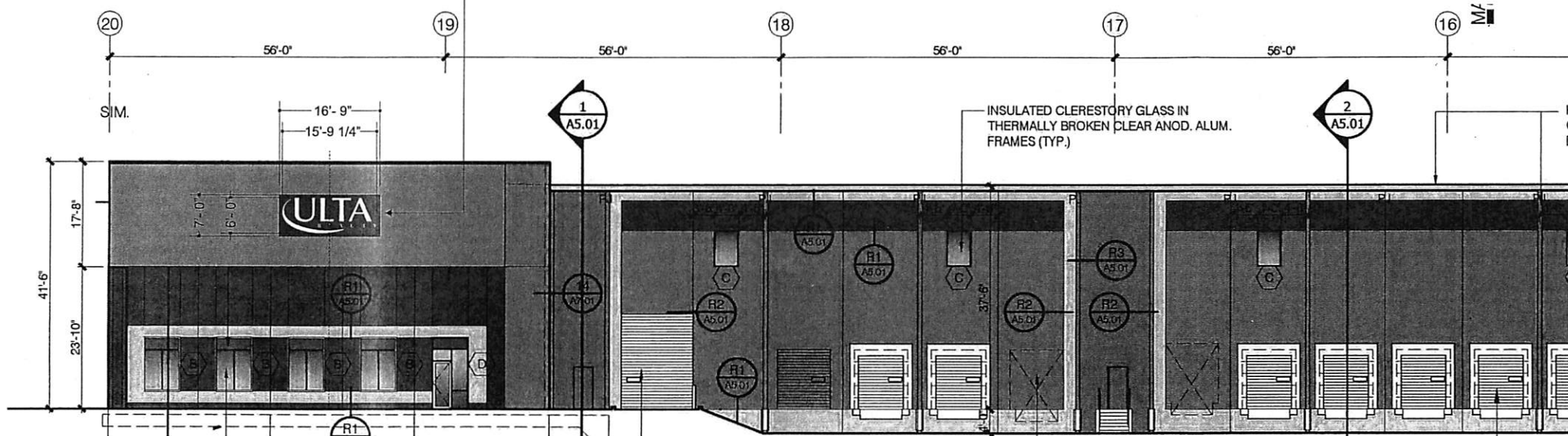
KS1901472A

Landlord Signature: _____ Printed Name: _____ Company: _____ Date: _____

Internally Illuminated Letters on a Background Panel flush mounted to concrete wall. Reference Drawing KS1902472F for fabrication specifications.
AREA = 117.25 Sq. FT.



PROPOSED SIGN LOCATION ON FULL WEST ELEVATION



PROPOSED SIGN LOCATION ON PARTIAL WEST ELEVATION

Scale: 1/16" = 1'-0"

Kieffer | Starlite
National Sign Manufacturers and Consultants
Dallas/Ft. Worth | Chicago | Sheboygan | Charlotte

ACCOUNT: ULTA BEAUTY Distribution Center
LOCATION: Jacksonville, FL
ACCT. REP: LC DESIGNER: MAK
DATE: 4/16/19
COMPANION FILES

REVISIONS:

▲	-
▲	-
▲	-
▲	-
▲	-
▲	-
▲	-
▲	-

INITIALS & DATE:

-	-
-	-
-	-
-	-
-	-
-	-
-	-
-	-

This is an original unpublished drawing submitted for use in connection with a project being planned for you by Kieffer Holding Co. It is not to be reproduced, copied or exhibited in any fashion without the written permission of Kieffer Holding Company.

For Contact Information
visit us at
www.kssigngroup.com

KS1901472B

Landlord Signature: _____ Printed Name: _____ Company: _____ Date: _____