

# THE SCHOOL

RAIL TRAIN WAY

EAST 17th STREET

E 17th Street (P) Oregon Street (P)

E 17th Street (P) Oregon Street (P)

E 17th Street (P) Oregon Street (P)

E 17th Street (P) Oregon Street (P)

E 17th Street (P) Oregon Street (P)

E 17th Street (P) Oregon Street (P)

E 17th Street (P) Oregon Street (P)

E 17th Street (P) Oregon Street (P)

E 17th Street (P) Oregon Street (P)

E 17th Street (P) Oregon Street (P)

E 17th Street (P) Oregon Street (P)

E 17th Street (P) Oregon Street (P)

E 17th Street (P) Oregon Street (P)

E 17th Street (P) Oregon Street (P)

E 17th Street (P) Oregon Street (P)

E 17th Street (P) Oregon Street (P)

E 17th Street (P) Oregon Street (P)

E 17th Street (P) Oregon Street (P)

E 17th Street (P) Oregon Street (P)

E 17th Street (P) Oregon Street (P)

E 17th Street (P) Oregon Street (P)

E 17th Street (P) Oregon Street (P)

E 17th Street (P) Oregon Street (P)

E 17th Street (P) Oregon Street (P)

E 17th Street (P) Oregon Street (P)

E 17th Street (P) Oregon Street (P)

E 17th Street (P) Oregon Street (P)

E 17th Street (P) Oregon Street (P)

E 17th Street (P) Oregon Street (P)

E 17th Street (P) Oregon Street (P)

E 17th Street (P) Oregon Street (P)

E 17th Street (P) Oregon Street (P)

E 17th Street (P) Oregon Street (P)

E 17th Street (P) Oregon Street (P)

E 17th Street (P) Oregon Street (P)

E 17th Street (P) Oregon Street (P)

E 17th Street (P) Oregon Street (P)

E 17th Street (P) Oregon Street (P)

E 17th Street (P) Oregon Street (P)

E 17th Street (P) Oregon Street (P)

E 17th Street (P) Oregon Street (P)

E 17th Street (P) Oregon Street (P)

E 17th Street (P) Oregon Street (P)

E 17th Street (P) Oregon Street (P)

E 17th Street (P) Oregon Street (P)

E 17th Street (P) Oregon Street (P)

E 17th Street (P) Oregon Street (P)

E 17th Street (P) Oregon Street (P)

E 17th Street (P) Oregon Street (P)

E 17th Street (P) Oregon Street (P)

E 17th Street (P) Oregon Street (P)

E 17th Street (P) Oregon Street (P)

E 17th Street (P) Oregon Street (P)

E 17th Street (P) Oregon Street (P)

E 17th Street (P) Oregon Street (P)

E 17th Street (P) Oregon Street (P)

E 17th Street (P) Oregon Street (P)

E 17th Street (P) Oregon Street (P)

E 17th Street (P) Oregon Street (P)

E 17th Street (P) Oregon Street (P)

E 17th Street (P) Oregon Street (P)

E 17th Street (P) Oregon Street (P)

E 17th Street (P) Oregon Street (P)



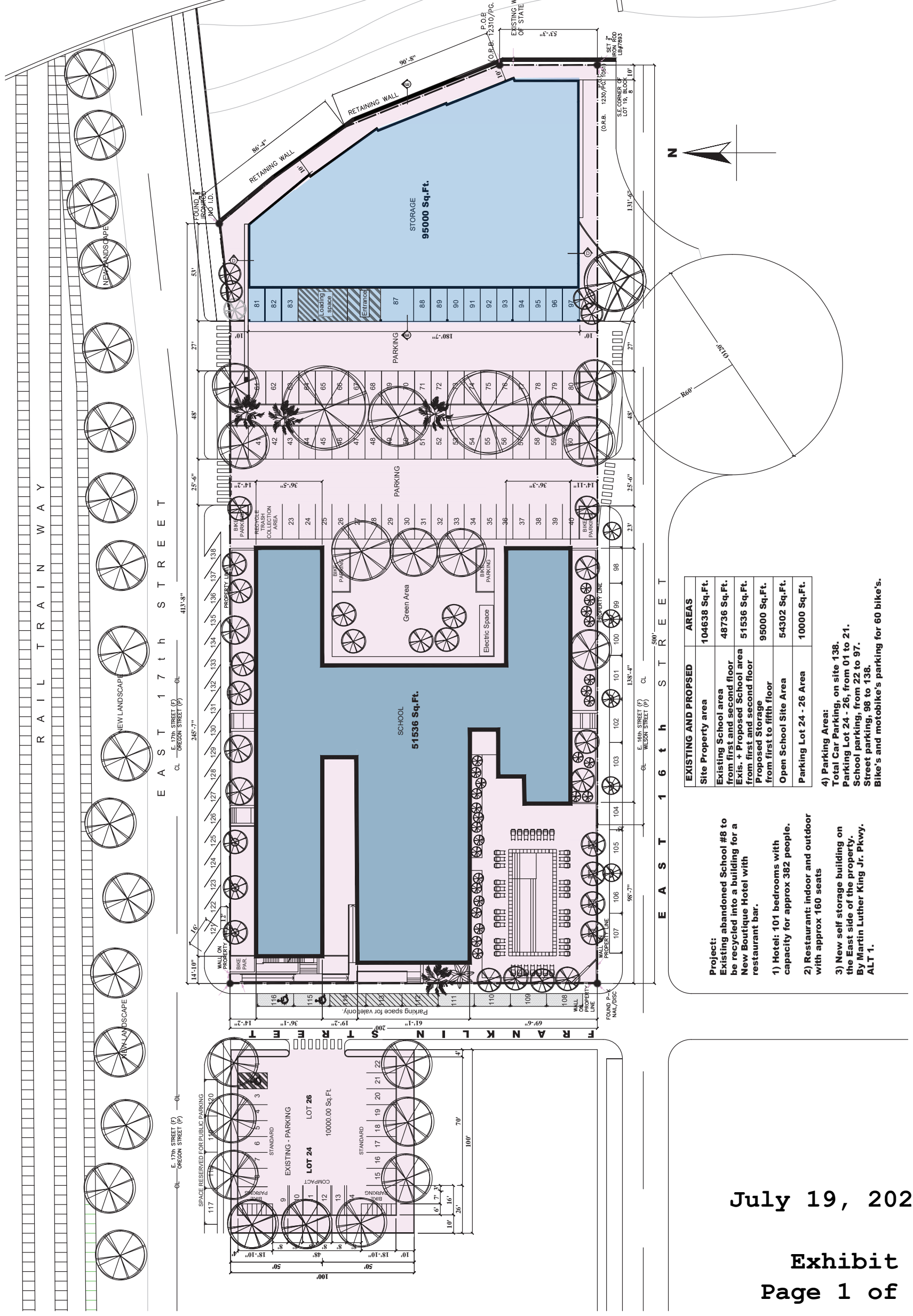
**Alegre & Associates**  
Design - Planning - Development  
310 487 6114  
www.rudyalegre.com

**THE SCHOOL**  
Boutique Hotel & Restaurant Bar

EXISTING • PROPOSED  
SITE PLAN

DRAW BY:  
CAD FILE:  
PROJECT NO.:  
DATE: 07/19/2024

**A-9**  
SHEET OF

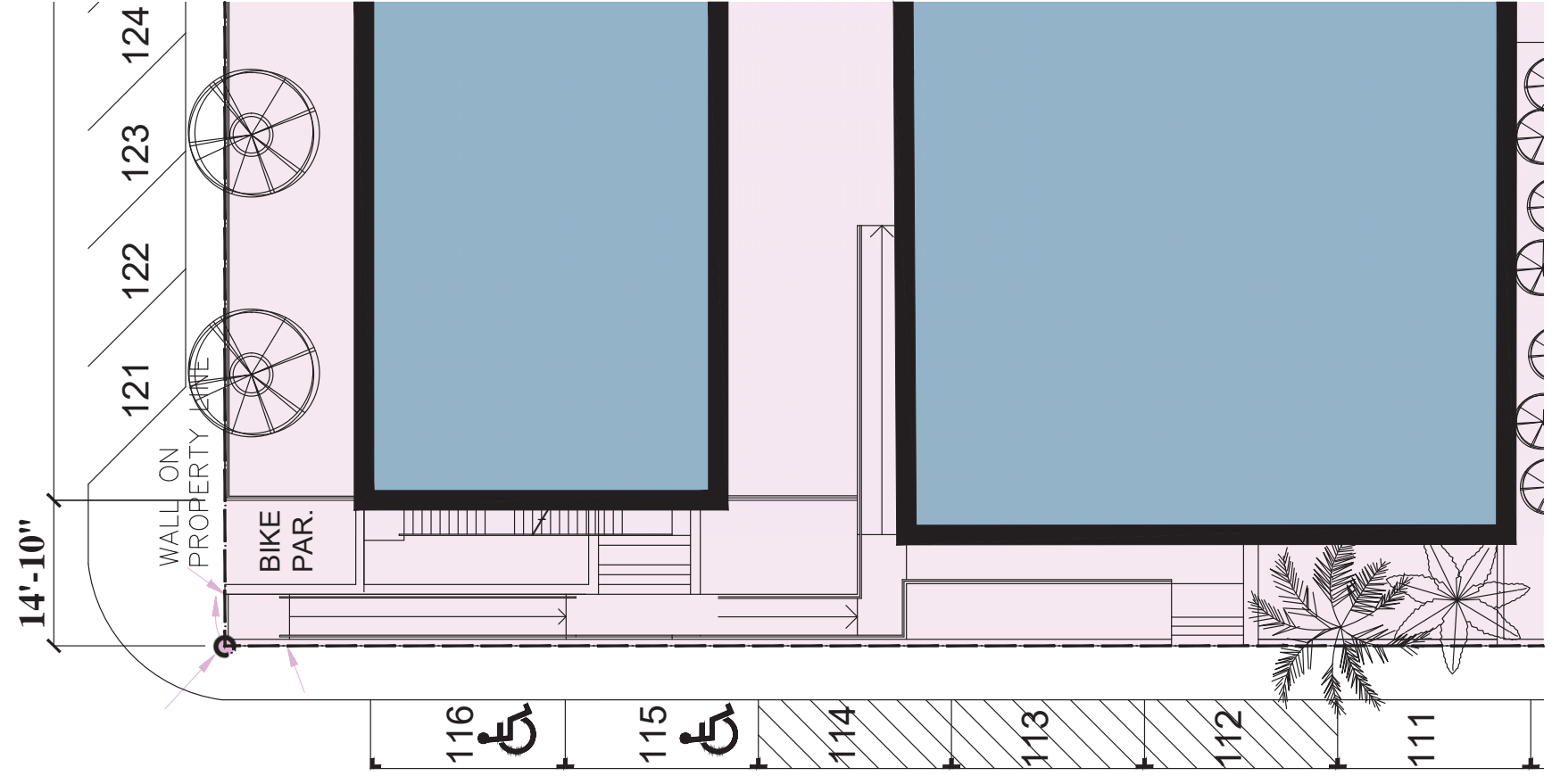
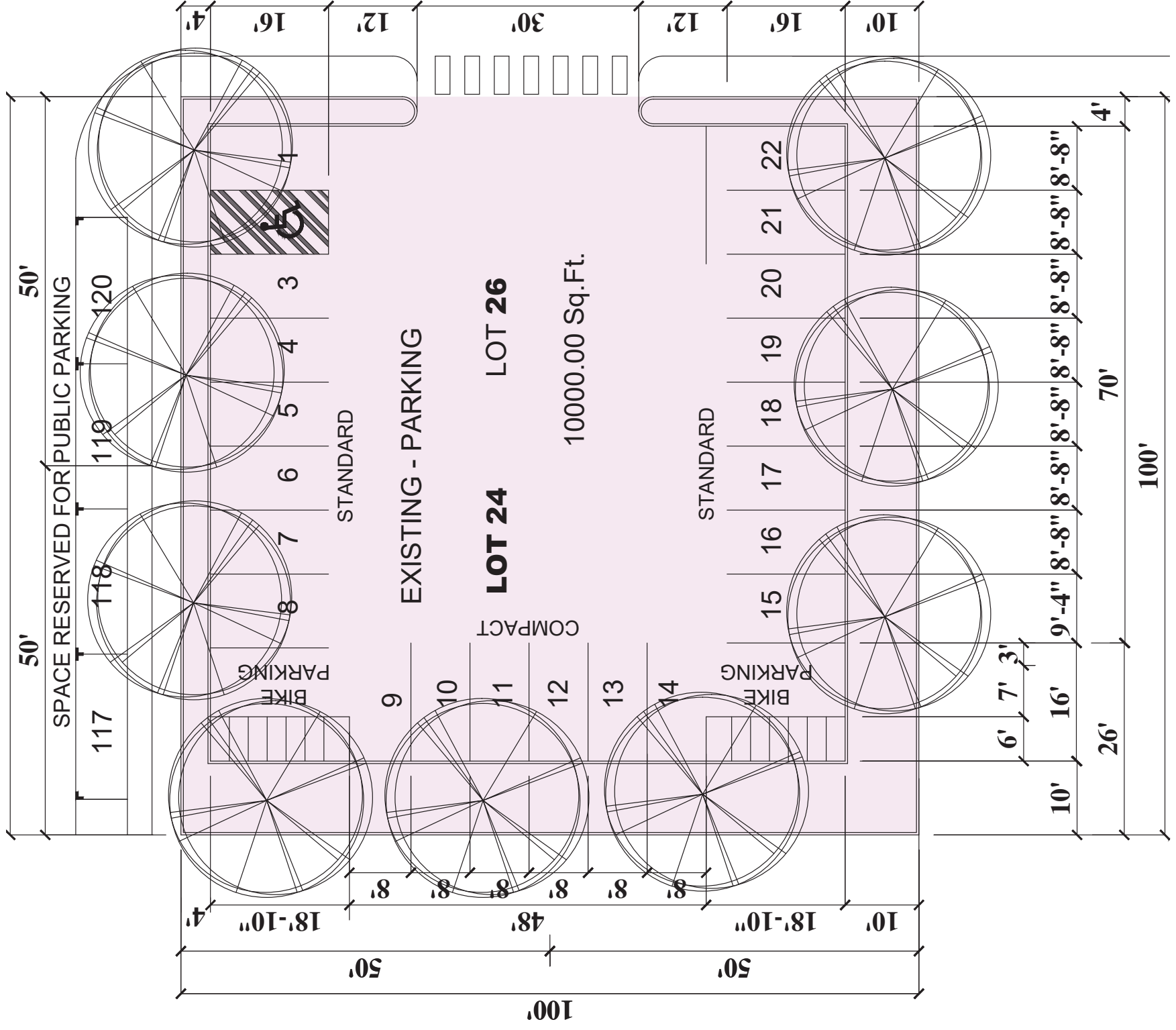


EXISTING AND PROPOSED AREAS	AREAS
Site Property area	104638 Sq.Ft.
Existing School area from first and second floor Exis. + Proposed School area from first and second floor	48736 Sq.Ft.
Proposed Storage from first to fifth floor	51536 Sq.Ft.
Open School Site Area	95000 Sq.Ft.
Parking Lot 24 - 26 Area	54302 Sq.Ft.
Parking Area:	10000 Sq.Ft.

- Project:**  
Existing abandoned School #8 to be recycled into a building for a New Boutique Hotel with restaurant bar.
- Hotel: 101 bedrooms with capacity for approx 382 people.
  - Restaurant: indoor and outdoor with approx 160 seats
  - New self storage building on the East side of the property. By Martin Luther King Jr. Pkwy. ALT 1.
  - Parking Area:  
Total Car Parking, on site 138.  
Parking Lot 24 - 26, from 01 to 21.  
School parking, from 22 to 97.  
Street parking, 98 to 138.  
Bike's and motobike's parking for 60 bike's.

July 19, 2024

# THE SCHOOL



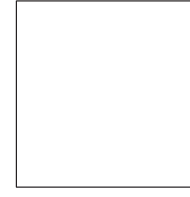
PROPOSED PARKING  
LOT 24-26



**Alegre & Associates**  
Design - Planning - Development  
310 487 6114  
www.rudyalegre.com

**THE SCHOOL**  
Boutique Hotel & Restaurant Bar

PROPOSED PARKING  
LOT 24 - 26



DRAW BY:  
CAD FILE:  
PROJECT NO.:  
DATE: 07/19/2024

**A10**  
SHEET \_\_\_ OF \_\_\_

July 19, 2024